



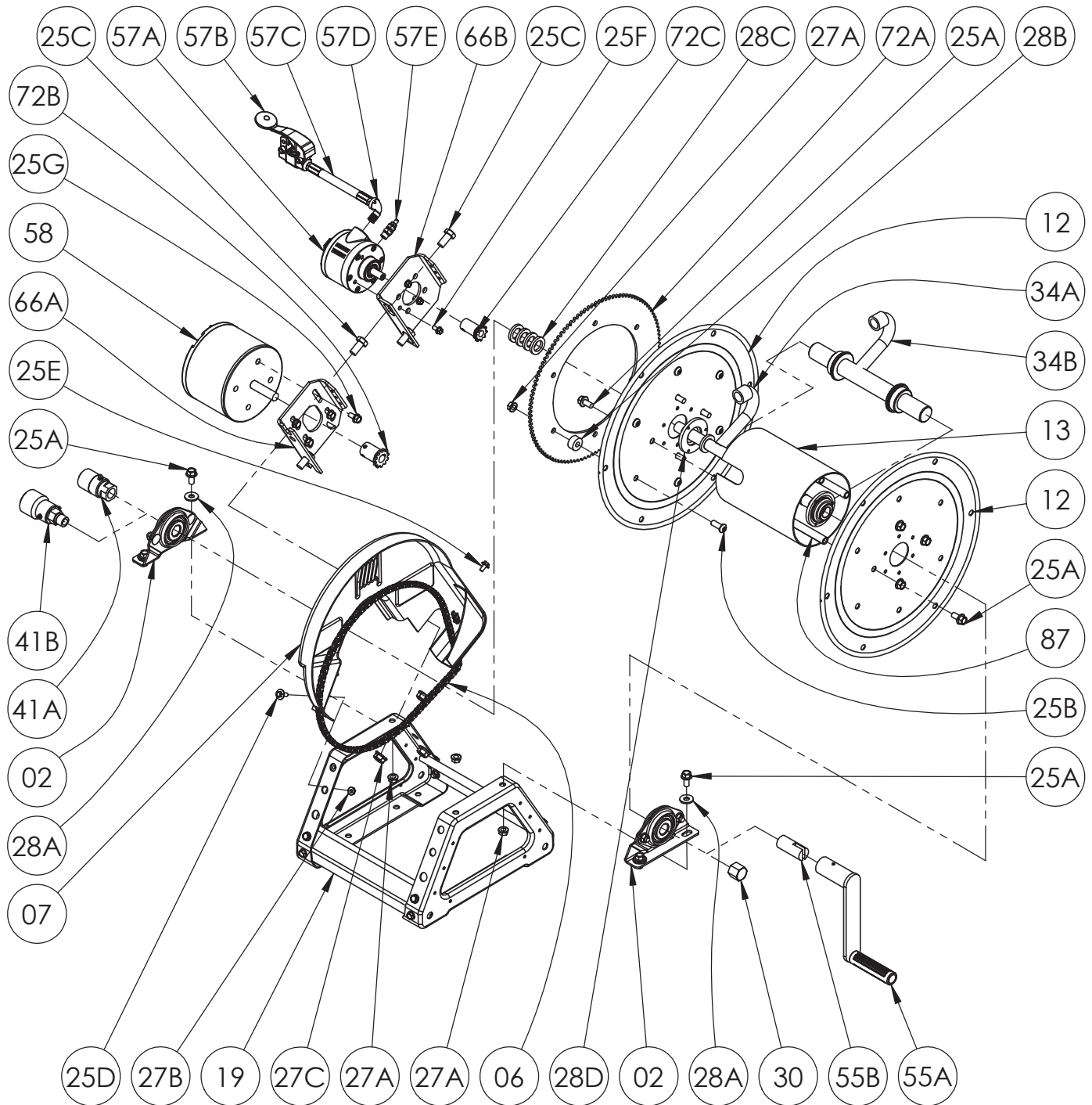
# Hannay Reels®

The reel leader.

Hannay Reels, Inc.  
553 State Route 143, Westerlo, NY 12193  
www.hannay.com  
Email: reels@hannay.com

Phone 1-518-797-3791  
Toll Free 1-877-GO-REELS (467-3357)  
Fax 1-800-REELING (733-5464)  
Int'l Fax 1-518-797-3259

## ISO 90 PARTS LIST SERIES 1500 POWER REWIND



Hannay ISO Parts Lists are available  
at [www.hannay.com](http://www.hannay.com)

**PARTS LIST  
ISO 90  
SERIES 1500 POWER REWIND**

**When Ordering Parts  
BE SURE TO SPECIFY COMPLETE MODEL NUMBER and SERIAL NUMBER OF REEL  
USE PART NUMBER!**

<u>Item No.</u>	<u>Description</u>	<u>Part No.</u>	<u>Quantity</u>
02	1/2" S.A. Bearing Complete (See ISO-210 for Parts).....	9902.1200	2
02	1" S.A. Bearing Complete (EFH1500 Only) (Not Shown) (See ISO-210 for Parts).....	9902.1400	2
06	#35 Chain- 116 Links (43-1/2" Long) w/ Connecting Link .....	9912.0028	1
07	Molded Chain Guard for Motor on Left, per P07A-00190.....	9957.0030	1
07	Molded Chain Guard for Motor on Right, per P07A-00200 (Not Shown) .....	9957.0031	1
12	(17-18) 16-1/2" Dia. Disc for 1500 Series.....	9903.0516	2
13	6" Dia. Aluminum Drum (Specify Model) .....	9905.7112	1
19	Trapezoid Frame Assembly (Specify Model) (Steel E-Coated) .....	9908.1000	1
25A	3/8"-16 x 3/4" Spinlock Bolt .....	9904.2201	12
25B	3/8"-16 x 1" Socket Head Cap Screw (For Sprocket).....	9904.9202	6
25C	1/2"-13 x 1" Hex Head Bolt (For Motorplates).....	9904.1402	2
25D	1/4"-20 x 3/4" Hex Washer Head Black Zinc Screw (For Chainguard).....	9904.1071	2
25E	1/4"-20 x 1/2" Hex Washer Head Tap Tight Screw (For Chainguard).....	9904.1070	2
27A	3/8"-16 Spinlock Nut.....	9904.6200	10
27B	1/4"-20 Small Flange Spinlock Nut (For Chainguard) .....	9904.6000	2
27C	1/2"-13 Spin Lock Nut (For Motorplate).....	9904.5400	2
28A	3/8" Flat Washer .....	9954.0007	4
28B	Sprocket Spacer (1" O.D. x 0.381" I.D. x 1/2" Thick).....	9954.0015	6
28C	1/2" Hub Spacer, 3/16" Thick (Plastic).....	9954.0020	4
28D	1500 Disc Washer for 1/2" Hub .....	9965.0040	2
28E	1" Hub Spacer, 1/8" Thick (Plastic) (EFH1500 Only) (Not Shown).....	9954.0021	As Req'd
30	1/2" Hub Pipe Cap for 1500 Series .....	9965.0013	1
34A	1/2" Welded Iron Pipe Hub (Specify Model and Fittings).....	9901.0610	1
34A	1/2" Welded 304 SS Hub (Specify Model and Fittings) (EFL1500 Only).....	9901.0604	1
34B	1/2" Welded 304 SS Barstock Hub (Specify Model and Fittings) (EFH1500 Only) .....	9901.0634	1
41A	1/2" 90 Deg FxF Steel 5000 PSI Super Swivel Jt (AFLAS Seals).....	9927.8551	1
41A	1/2" 90 Degree FxF 3,000 PSI Oxygen Super Swivel Jt (Viton Seals) (EFL1500).....	9927.8537	1
41B	1/2" 90 Degree MxF 6,000 PSI Oxygen Super Swivel Jt (Viton Seals) (EFH1500) .....	9927.8177	1
72A	112T35 x 13-3/8" Dia. Disc Sprocket (Steel E-Coated).....	9910.1321	1
87	Anodized Threaded Spacer Pipe.....	Spec Model	4
<b>Optional Removable Direct Crank Rewind</b>			
55A	Removable Hand Crank (See ISO-214 for Parts) .....	9914.0012	1
55B	1/2" Adaptor for Removable Hand Crank on 1500 Series .....	9914.0053	1
<b>Electric Motor Only Parts</b>			
25G	5/16"-18 x 5/8" Spinlock Bolt (For Electric Motor) .....	9904.2159	4
58	AN-227 12V DC Face Mount 1/3 HP 650 RPM Motor.....	9915.0042	1
58	AN-239 12V DC Face Mount 1/5 HP 420 RPM Motor (Optional).....	9915.0040	1
58	AN-250 12V DC Face Mount 1/12 HP 220 RPM Motor (Optional).....	9915.0044	1
66A	Electric Motor Mounting Plate for Trapezoid Frame w/ 25H (Steel E-Coated) .....	9923.0006	1
72B	11T35 x 1-3/4" Motor Sprocket for Electric Motor.....	9910.1119	1
<b>Air Motor Only Parts</b>			
25F	1/4"-20 x 1/2" Spinlock Bolt (For Air Motor).....	9904.1058	3
57A	#4 AM Gast Air Motor (4 AM NRV-143) w/ Speed Control Muffler (57E).....	9918.1122	1
57B	#3420 Schrader Valve for #4 AM Air Motor .....	9919.0004	1
57C	1/4" MxM NPT x 18" Long Air Hose.....	9919.0007	1
57D	1/4" MxF 90 Degree Street Elbow for #4 AM Air Motor .....	9950.0013	1
57E	1/4" MNPT Speed Control Muffler for #4 AM Air Motor .....	9919.0006	1
66B	Air Motor Mounting Plate for Trapezoid Frame w/ 25G (Steel E-Coated) .....	9923.0013	1
72C	9T35 x 1-3/4" Motor Sprocket for Air Motor .....	9910.1015	1