

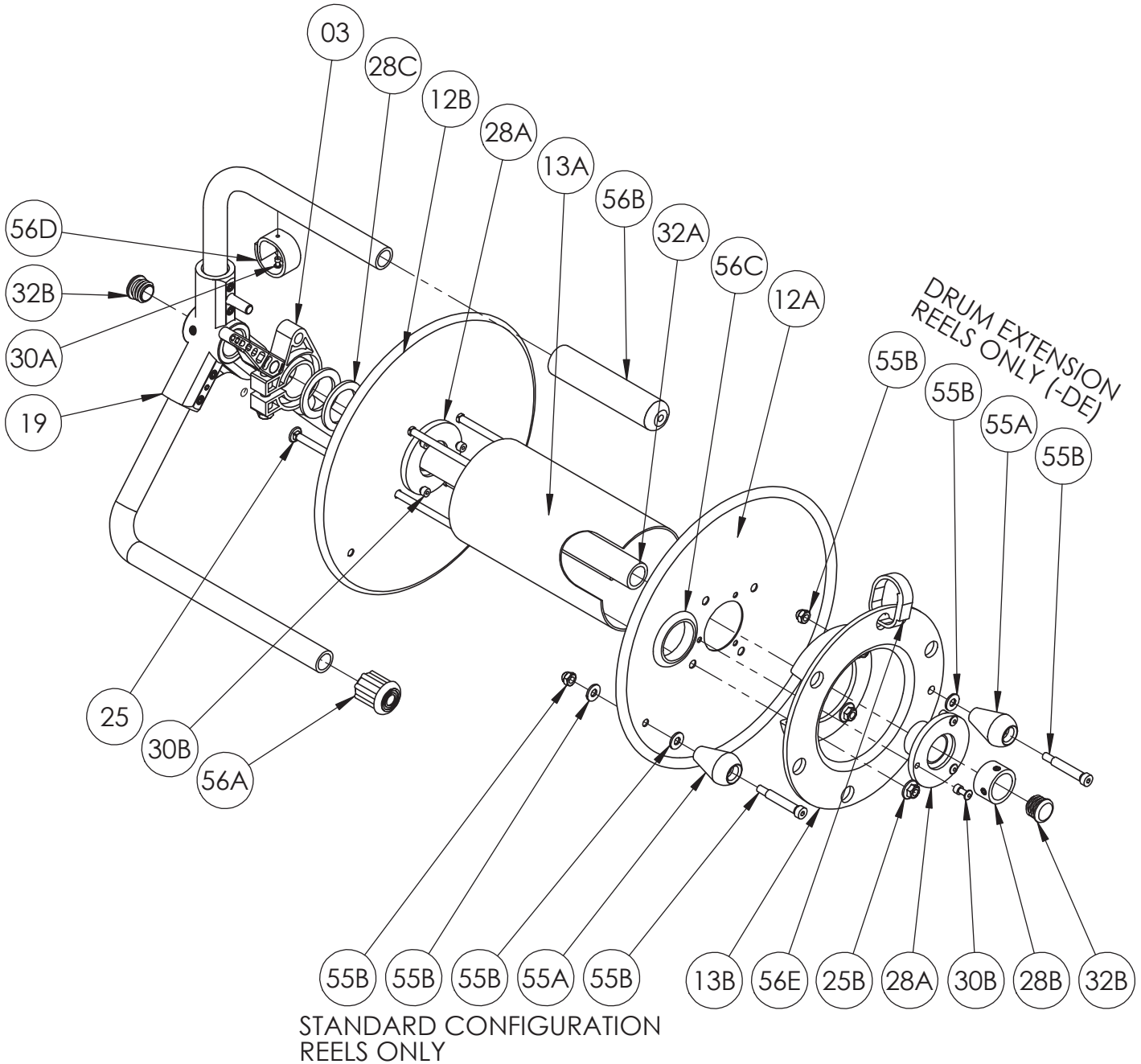


Hannay Reels, Inc.
 553 State Route 143, Westerlo, NY 12193
 www.hannay.com
 Email: reels@hannay.com

Phone 1-518-797-3791
 Toll Free 1-877-GO-REELS (467-3357)
 Fax 1-800-REELING (733-5464)
 Int'l Fax 1-518-797-3259

ISO 88 PARTS LIST

**C 16-10-11, C 16-10-11-DE
 AVC 16-10-11, AVC 16-10-11-DE
 Portable Cable Reel**



**Hannay ISO Parts Lists are available
 at www.hannay.com**

PARTS LIST
ISO 88
C 16-10-11, C 16-10-11-DE, AVC 16-10-11, AVC 16-10-11-DE

When Ordering Parts
BE SURE TO SPECIFY COMPLETE MODEL NUMBER and SERIAL NUMBER OF REEL
USE PART NUMBER!

<u>Item No.</u>	<u>Description</u>	<u>Part No.</u>	<u>Quantity</u>
03	Cam Lever Drag Brake Kit (Refer to ISO-254 for Individual Parts)	9947.0140	1
12A	C16-10-11 Disc, per P12A-00090 (Specify w/ Access Hole)	9903.0111	1
12B	C16-10-11 Disc, per P12A-00090 (Specify w/o Access Hole)	9903.0111	1
13A	4" Dia. Drum (Aluminum) (Specify C 16-10-11)	9905.7105	1
13B	Cable Storage Drum (4.75" Dia.), per P13A-00260 (DE Models Only)	9949.0300	1
19	Modular 16-10-11 Frame Assembly (See ISO-260 for Parts)	9908.0680	1
25	1/4"-20 x 8" Carriage Bolt w/ Nut (Standard Models Only) (not shown)	9949.0050	4
25	1/4"-20 x 8-1/4" Carriage Bolt w/ Nut (DE Models Only)	9949.0052	4
28A	Delrin Disc Washer/ Brake Arbor (C 16-10-11 & C 16-10-11-DE)	9949.0210	2
28A	Zinc/Aluminum Disc Washer/ Brake Arbor (AVC 16-10-11 & AVC 16-10-11-DE)	9949.0211	2
28B	AV Shaft Collar, (w/ 2 Set Screws), per P28A-00790	9955.0250	1
28C	1-7/8" OD x 1-5/16" ID x 1/8" thick washer	9954.0021	2
30A	1/8" Blind Pop Rivet for Velcro Strap	9955.0017	1
30B	3/16" x 3/8" SST Blind Pop Rivet	9949.0212	6
32A	304 SST Hub 11.25" Long, per P32A-00580	9955.0063	1
32B	Hub End Cap (CCF-7/8)	9958.0062	2
55A	Manual Rewind Knob Handle	9914.0565	1
55B	5/16" Shoulder Bolt (w/ Nut and washers)	9914.0531	1
56A	Rubber Crutch Tip	9965.0058	2
56B	Rubber Hand Grip	9965.0057	1
56C	Rubber Grommet (1-3/4" Dia.)	9955.0030	1
56D	Velcro Strap (w/ Grommet)	9955.0016	1
56E	Velcro Strap (w/ Buckle) (DE Models Only)	9949.0080	1