



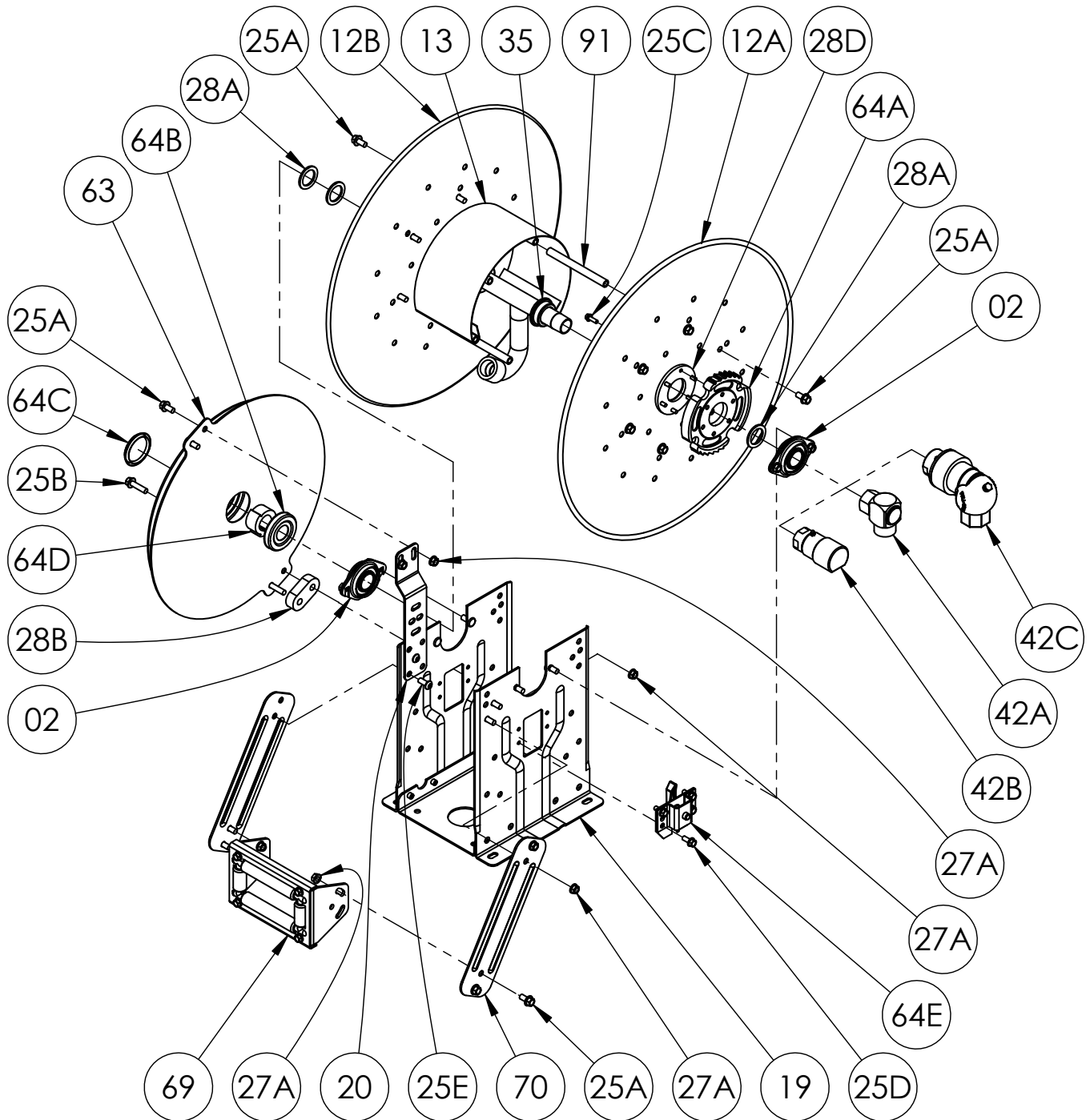
Hannay Reels®
The reel leader.

Hannay Reels, Inc.
553 State Route 143, Westerlo, NY 12193
www.hannay.com
Email: reels@hannay.com

Phone 1-518-797-3791
Toll Free 1-877-GO-REELS (467-3357)
Fax 1-800-REELING (733-5464)
Int'l Fax 1-518-797-3259

ISO 81
PARTS LIST

N800 SERIES
Spring Retractable Reels
For Single Hose



PARTS LIST
ISO 81
N-800 Series Spring Retractable Reels For Single Hose

When Ordering Parts
BE SURE TO SPECIFY COMPLETE MODEL NUMBER and SERIAL NUMBER OF REEL
USE PART NUMBER!

<u>Item No.</u>	<u>Description</u>	<u>Part No.</u>	<u>Qty</u>
02	1" Pipe-Size Self Aligning Bearing for N-Series Complete (see ISO-210 for parts)	9902.2600	2
12A	Front Disc	Spec Model/Serial #	1
12B	Back Disc (includes Disc Washer for 23-24 and larger discs)	Spec Model/Serial #	1
13	Drum, 10-1/2" Dia 18 Gauge 304 SST Wrap-Around (Specify Model).....	9905.0138	1
19	N-Series Spring Reel Frame Assembly Complete.....	Specify Model	1
20	N-Series Spring Mounting Bracket, per P20A-00280 (for "B" & "J" Springs)	9922.0050	1
25A	3/8"-16 x 3/4" Spinlock Bolt	9904.2201	16 or 18
25B	3/8"-16 x 1-1/2" Spinlock Bolt (for "B" Spring)	9904.2204	2
25C	1/4"-20 x 3/4" Hex Head Spinlock Cap Screw (for Ratchet Wheel).....	9904.1060	6
25D	5/16"-18 x 3/4" Thread Cutting Hex Head Bolt (for Ratchet Locking Assembly)	9958.0055	4
25E	3/8"-16 x 7/8" Button Socket Head Cap Screw	9904.9201	4
25F	5/16"-18 x 1-1/2" Hex Socket Button Head Cap Screw (for "J" Spring) (not shown).....	9904.9104	1
25G	5/16"-18 x 3/4" Hex Socket Button Head Cap Screw (for "J" Spring) (not shown).....	9904.9101	1
27A	3/8"-16 Spinlock Nut.....	9904.6200	8 or 12
27B	5/16"-18 Large Flange Spinlock Nut (for "J" Spring) (not shown)	9904.6100	2
28A	1" Hub Spacer Washer - Plated (1-7/8" OD x 1-5/16" ID x 1/8" Thick).....	9954.0021	3
28B	Oval Spring Spacer, per P28A-00020 (for "B" Spring)	9922.0032	1
28C	Spring Spacer, per P28A-00070 (for "J" Spring) (not shown).....	9922.0033	1
28D	EH-936 Disc Washer (E-Coated)	9965.0015	1
29	Woodruff Key #9 for Spring Arbor (3/16" x 3/4") (not shown)	9916.0080	1
30A	Spring Under Tension Caution Decal (not shown).....	9922.0010	1
30B	Rewind Caution Decal (not shown)	9922.0014	1
35	1" Barstock Steel Hub Assembly (Thru H2M) (Specify Model/Serial Number and Riser Fitting).....	9901.1610	1
35	1" Barstock Steel Hub Assembly (H5M) (Specify Model/Serial Number and Riser Fitting).....	9901.1611	1
42A	1" BP 90 FxF Steel 3000 PSI Super Swivel Joint (BUNA) (HR42-4002).....	9929.8538	1
42A	1" BUNA Packing, BP Super Swivel Joint (SS-16BP KIT-20267) (not shown).....	9936.0570	1
42B	1" 90 FxF Steel 4000 PSI Super Swivel Joint (GLT VITON) (HR-42-0004)	9929.8552	1
42B	1" GLT VITON Packing, Super Swivel Joint (SS-16-KIT-GLT) (not shown).....	9936.0581	1
42C	1" 90 FxF Steel 350 PSI Full Circle Swivel Joint (LPG)	9929.0501	1
63	"B" Spring w/ Arbor (Item 64D).....	9921.0015	1
63	"J" Spring w/ Arbor (Item 64D) (not shown).....	9921.0030	1
64A	Ratchet Wheel (2 Position) 180 Deg w/ Hardware, per P64A-00120 (includes Item 25C)	9922.0015	1
64B	Cap-Plug for Spring (STP-3) Inner Side	9922.0036	1
64C	Low Temp Cap-Plug for Spring (BP-2-1/2) Outer Side.....	9922.0037	1
64D	Spring Arbor, per P64A-00110 (for "B" or "J" Springs)	9922.0002	1
64E	Right Hand Ratchet Locking Assembly Complete (see ISO-207 for parts)	9922.0312	1
64E	Left Hand Ratchet Locking Assembly Complete (for Reverse Springs ONLY)..... (see ISO-207 for parts).....	9922.0311	1
69	N206 Complete Roller Assembly for Model N818 (see ISO-208 for parts)	9939.0113	1
69	N204 Complete Roller Assembly for Model N816 (see ISO-208 for parts) (not shown).....	9939.0111	1
70	N-Series Single Roller Arm, per P70A-03020 (Specify Model).....	9941.0030	2
91	6" Long Anodized Threaded Spacer Pipe for Model N818	9904.0312	6
91	4" Long Anodized Threaded Spacer Pipe for Model N816 (not shown)	9904.0308	6