

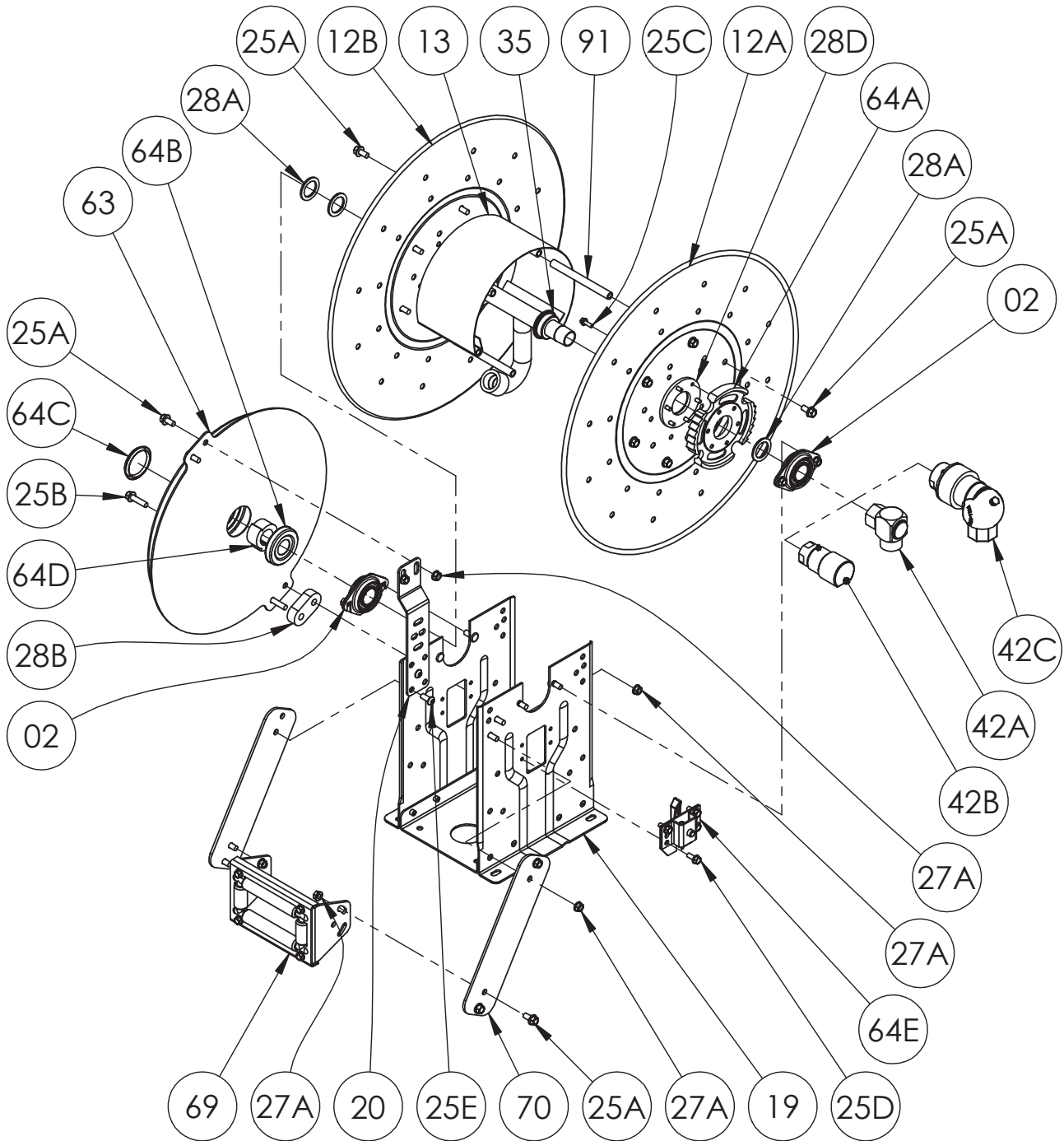


Hannay Reels, Inc.
 553 State Route 143, Westerlo, NY 12193
 www.hannay.com
 Email: reels@hannay.com

Phone 1-518-797-3791
 Toll Free 1-877-GO-REELS (467-3357)
 Fax 1-800-REELING (733-5464)
 Int'l Fax 1-518-797-3259

ISO 81 PARTS LIST

N-800 SERIES Spring Retractable Reels For Single Hose



Hannay ISO Parts Lists are available
 at www.hannay.com

PARTS LIST
ISO 81
N-800 Series Spring Retractable Reels For Single Hose

When Ordering Parts
BE SURE TO SPECIFY COMPLETE MODEL NUMBER and SERIAL NUMBER OF REEL
USE PART NUMBER!

<u>Item No.</u>	<u>Description</u>	<u>Part No.</u>	<u>Qty</u>
02	1" Self Aligning Bearing for N Series Complete (See ISO-210 for Parts)	9902.2600	2
12A	Front Disc	Spec Model/Serial #	1
12B	Back Disc (Includes Disc Washer for 23-24 and larger Discs)	Spec Model	1
13	10-1/2" Diameter 304 SST Wrap Around Drum (Specify Model)	9905.0138	1
19	N Series Spring Reel Frame Assembly Complete	Spec Model	1
20	Universal Spring Mounting Bracket for N Series, per P20A-00280 (for "B" & "J" Springs)	9922.0050	1
25A	3/8"-16 x 3/4" Spinlock Bolt	9904.2201	16 or 18
25B	3/8"-16 x 1-1/2" Spinlock Bolt (For "B" Spring)	9904.2204	2
25C	1/4"-20 x 3/4" Spinlock Bolt (For Ratchet Wheel)	9904.1060	6
25D	5/16"-18 x 3/4" Thread Cutting Hex Head Bolt (For Ratchet Locking Ass'y)	9958.0055	4
25E	3/8"-16 x 7/8" Socket Head Cap Screw	9904.9201	4
25F	5/16"-18 x 1-1/2" Hex Socket Button Head Screw (For "J" Spring) (Not Shown)	9904.9104	1
25G	5/16"-18 x 3/4" Hex Socket Button Head Screw (For "J" Spring) (Not Shown)	9904.9101	1
27A	3/8"-16 Spinlock Nut	9904.6200	8 or 12
27B	5/16"-18 Large Flange Spinlock Nut (For "J" Spring) (Not Shown)	9904.6100	2
28A	1-7/8" O.D. x 1-5/16" I.D. x 1/8" Thick Hub Spacer, per P28A-00360 (Plastic)	9954.0021	3
28B	Oval Spring Spacer, per P28A-00020 (For "B" Spring)	9922.0032	1
28C	Spring Spacer, per P28A-00070 (For "J" Spring) (Not Shown)	9922.0033	1
28D	Disc Washer (For Under Ratchet Wheel)	9965.0015	1
29	Woodruff Key #9 for Spring Arbor (3/16" x 3/4") (Not Shown)	9916.0080	1
30A	Caution Decal (Spring Under Tension) (Not Shown)	9922.0010	1
30B	Caution Decal (Rewind Caution) (Not Shown)	9922.0014	1
35	1" Barstock Hub Assembly (Specify Model/Serial Number and Riser Fitting)	9901.1610	1
35	1" Barstock Hub Assembly (Up to 5,000psi) (Specify Model/Serial Number and Riser Fitting)	9901.1611	1
42A	1" 90 Degree FxF Steel 3000 PSI Balanced Pressure Swivel Joint (BUNA)	9929.8538	1
42B	1" 90 Degree FxF Steel 4000 PSI Full Flow Swivel Joint (GLT VITON)	9929.8552	1
42C	1" 90 Degree FxF Steel 350 PSI Full Circle Swivel Joint (LPG) (PBN800 Reels)	9929.0501	1
63	"B" Spring w/ Arbor (Item 64D)	9921.0015	1
63	"J" Spring w/ Arbor (Item 64D) (Not Shown)	9921.0030	1
64A	Ratchet Wheel (Includes 25C), per P64A-00120	9922.0015	1
64B	Dust Cap for Inner Spring Side	9922.0036	1
64C	Dust Cap for Outer Spring Side	9922.0037	1
64D	Spring Arbor, per P64A-00110 (For "B" or "J" Springs)	9922.0002	1
64E	Right Hand Ratchet Locking Assembly Complete (Refer to ISO-207 for Individual Parts)	9922.0312	1
64E	Left Hand Ratchet Locking Assembly Complete (For Reverse Springs ONLY) (Refer to ISO-207 for Individual Parts)	9922.0311	1
69	N206 Complete Roller Assembly for Model N818 (Refer to ISO-208 for Individual Parts)	9939.0113	1
69	N204 Complete Roller Assembly for Model N816 (Not Shown) (Refer to ISO-208 for Individual Parts)	9939.0111	1
70	N Series Single Roller Arm, per P70A-00250 (Specify Model)	9941.0030	2
91	6" Long Anodized Threaded Spacer Pipe for Model N818	9904.0312	6
91	4" Long Anodized Threaded Spacer Pipe for Model N816 (Not Shown)	9904.0308	6