

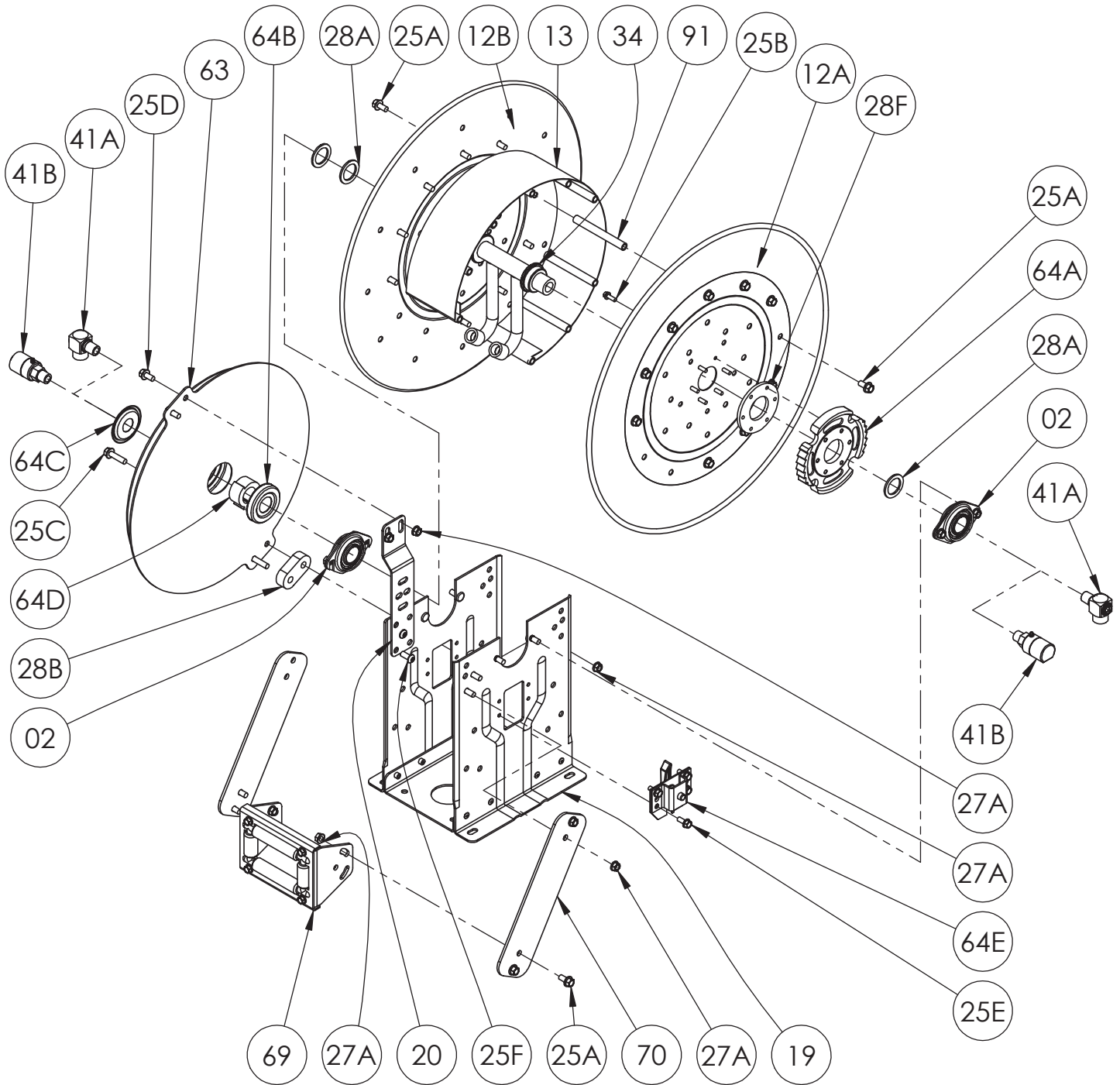


Hannay Reels, Inc.
 553 State Route 143, Westerlo, NY 12193
 www.hannay.com
 Email: reels@hannay.com

Phone 1-518-797-3791
 Toll Free 1-877-GO-REELS (467-3357)
 Fax 1-800-REELING (733-5464)
 Int'l Fax 1-518-797-3259

ISO 80 PARTS LIST

N-600 SERIES



Hannay ISO Parts Lists are available
 at www.hannay.com

**PARTS LIST
ISO 80
N-600 Series**

**When Ordering Parts
BE SURE TO SPECIFY COMPLETE MODEL NUMBER and SERIAL NUMBER OF REEL
USE PART NUMBER!**

<u>Item No.</u>	<u>Description</u>	<u>Part No.</u>	<u>Qty.</u>
02	1" Self Aligning Bearing for N Series Complete (See ISO-210 for Parts).....	9902.2600	2
12A	Front Disc	Spec Model/Serial #	1
12B	Back Disc (Includes Disc Washer for 23-24 and larger Discs).....	Spec Model/Serial #	1
13	15-1/2" Diameter 304 SST Wrap Around Drum (Specify Model).....	9905.0178	1
13	10-1/2" Diameter 304 SST Wrap Around Drum (Not Shown) (Specify Model).....	9905.0138	1
19	N Series Spring Reel Frame Assembly Complete.....	Spec Model	1
20	N Series Spring Mounting Bracket, per P20A-00280 (for "A", "B" & "J" Springs).....	9922.0050	1
25A	3/8"-16 x 3/4" Spinlock Bolt	9904.2201	16 or 24
25B	1/4"-20 x 3/4" Spinlock Bolt (For Ratchet Wheel).....	9904.1060	6
25C	3/8"-16 x 1-1/2" Spinlock Bolt (For "A" & "B" Springs).....	9904.2204	2
25D	3/8"-16 x 3/4" Spinlock Bolt (For "A" & "B" Springs).....	9904.2201	2
25E	5/16"-18 x 3/4" Thread Cutting Hex Head Bolt (For Ratchet Locking Ass'y)	9958.0055	4
25F	3/8"-16 x 7/8" Hex Socket Button Head Screw.....	9904.9201	4
25G	5/16"-18 x 1-1/2" Hex Socket Button Head Screw (For "J" & "C" Springs) (Not Shown) ..	9904.9104	1 or 2
25H	5/16"-18 x 3/4" Hex Socket Button Head Screw (For "J" Spring) (Not Shown).....	9904.9101	1
27A	3/8"-16 Spinlock Nut.....	9904.6200	8 or 12
27B	5/16"-18 Large Flange Spinlock Nut (For "J" & "C" Springs) (Not Shown).....	9904.6100	2
28A	1-7/8" O.D. x 1-5/16" I.D. x 1/8" Thick Hub Spacer (Plastic)	9954.0021	3
28B	Oval Spring Spacer, per P28A-00020 (For "A" & "B" Springs).....	9922.0032	1
28C	Spring Spacer, per P28A-00070 (For "C" and "J" Springs) (Not Shown)	9922.0033	1
28D	1/2" Thick Spring Spacer, per P28A-00330 (For "C" Spring) (Not Shown).....	9954.0015	1
28E	3/8" Flat Washer (For "C" Spring) (Not Shown).....	9954.0007	1
28F	Disc Washer	9965.0015	1
29	3/16" x 3/16" x 1" Long Square Machine Key for Spring Arbor (Not Shown)	9922.0031	1
34	1/2" Dual Welded Steel Barstock Hub Assembly (Specify Model/Serial Number and Fittings)	9901.0671	1
41A	1/2" 90 Degree MxF Steel 3000 PSI Balanced Pressure Swivel Joint (BUNA).....	9927.8138	2
41A	1/2" 90 Degree MxF Steel 3000 PSI Balanced Pressure Swivel Joint (VITON).....	9927.8139	2
41B	1/2" 90 Degree MxF Steel 5000 PSI Full Flow Swivel Joint (AFLAS)	9927.8151	2
41B	1/2" 90 Degree MxF Steel 5000 PSI Full Flow Swivel Joint (VITON).....	9927.8153	1
63	"B" Spring w/ Arbor (Item 64D)	9921.0015	1
63	"J" Spring w/ Arbor (Item 64D) (Not Shown).....	9921.0030	1
63	"A" Spring w/ Arbor (Item 64E) (Not Shown)	9921.0010	1
63	"C" Spring w/ Arbor (Item 64D) (Not Shown).....	9921.0018	1
64A	Ratchet Wheel and Hardware (Item 25B), per P64A-00120	9922.0015	1
64B	Dust Cap for Inner Spring Side.....	9922.0036	1
64C	Dust Cap for Outer Spring Side (For 600 Series Reels).....	9922.0041	1
64D	Spring Arbor, per P64A-00112 (For "B", "J" or "C" Springs)	9922.0002	1
64D	Spring Arbor, per P64A-00111 (For "A" Spring).....	9922.0001	1
64E	Right Hand Ratchet Locking Assembly Complete (Refer to ISO-207 for Parts)	9922.0312	1
64E	Left Hand Ratchet Locking Assembly Complete (For Reverse Springs ONLY) (Refer to ISO-207 for Parts)	9922.0311	1
69	N205 Complete Roller Assembly for Model N617 (Refer to ISO-208 for Parts)	9939.0112	1
69	N203 Complete Roller Assembly for Model N615 (Not Shown) (Refer to ISO-208 for Parts)	9939.0110	1
70	N Series Single Roller Arm (Specify Model).....	9941.0030	2
91	5" Long Anodized Threaded Spacer Pipe for Model N617	9904.0310	6 or 10
91	3" Long Anodized Threaded Spacer Pipe for Model N615 (Not Shown).....	9904.0306	6 or 10