



# Hannay Reels®

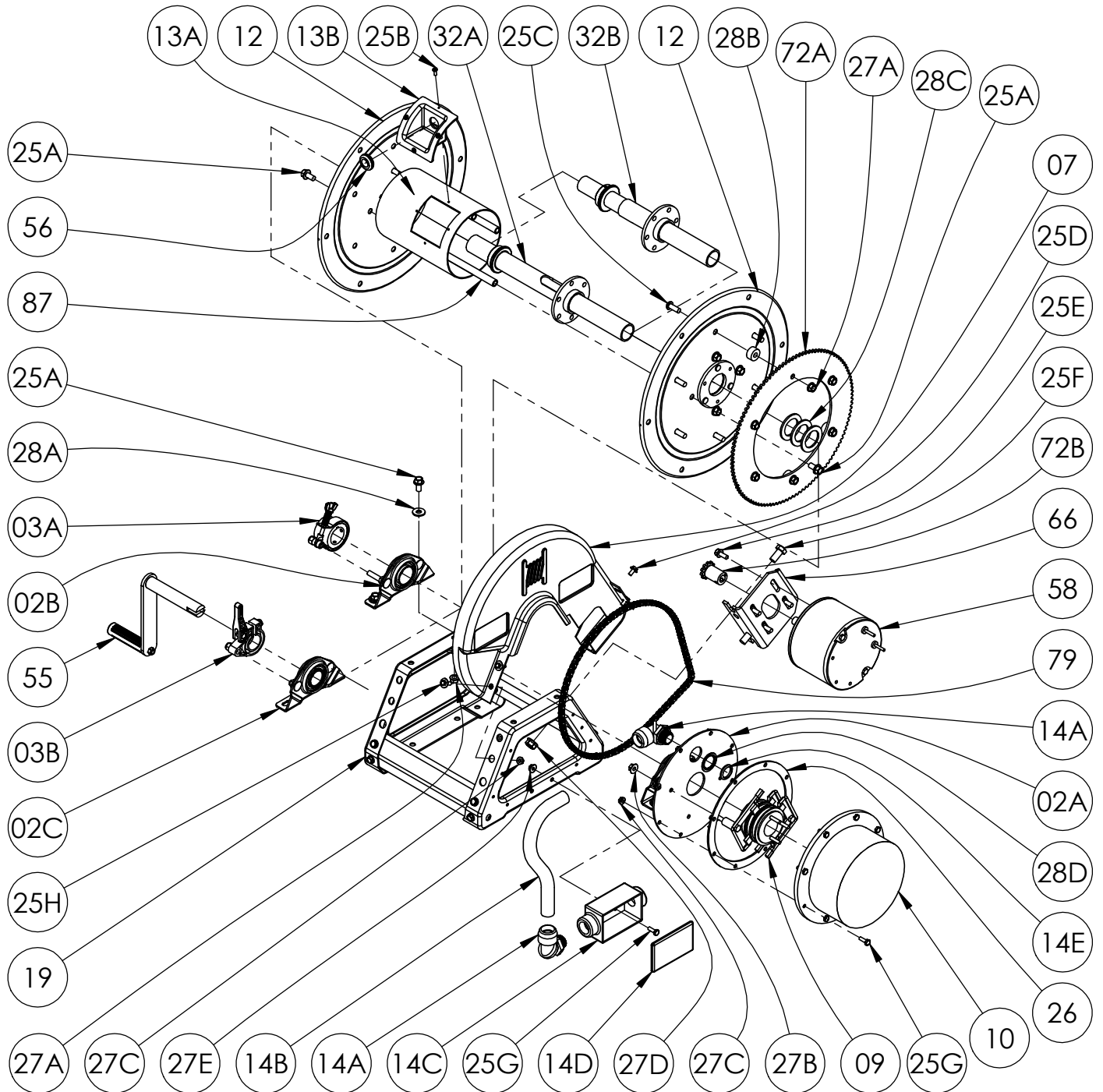
*The reel leader.*

Hannay Reels, Inc.  
 553 State Route 143, Westerlo, NY 12193  
 www.hannay.com  
 Email: reels@hannay.com

Phone 1-518-797-3791  
 Toll Free 1-877-GO-REELS (467-3357)  
 Fax 1-800-REELING (733-5464)  
 Int'l Fax 1-518-797-3259

## ISO 76 PARTS LIST

### ECR1600/CR1600 SERIES Cable Reel



**PARTS LIST**  
**ISO 76**  
**ECR1600/CR1600 Series Cable Reel**

**When Ordering Parts**  
**BE SURE TO SPECIFY COMPLETE MODEL NUMBER and SERIAL NUMBER OF REEL**  
**USE PART NUMBER!**

<u>Item No.</u>	<u>Description</u>	<u>Part No.</u>	<u>Quantity</u>
02A	1-1/2" Self Aligning Bearing w/ Backing Plate (See ISO-259 for Parts) .....	9943.0031	1
02B	1-1/2" Self Aligning Bearing (See ISO-210 for Parts) .....	9902.4000	1
02C	1" Self Aligning Bearing (See ISO-210 for Parts) .....	9902.1400	1
03A	Strap Brake Assembly (See ISO-212 for Parts) .....	9947.0063	1
03B	Cam Lock Drag Brake Kit for 1" Pipe Hubs (See ISO-254 for Parts) .....	9947.0140	1
06	#35 Chain- 116 Links (43-1/2" Long) w/ Connecting Link .....	9912.0029	1
07	Molded Chain Guard for Motor on Right, per P07A-00200 .....	9957.0031	1
07	Molded Chain Guard for Motor on Left, per P07A-00190 (Not Shown).....	9957.0030	1
09	Collector Assembly .....	Spec. Collector	1
10	Collector Cover (Includes 26).....	Spec. Collector	1
12	(17-18) 16-1/2" Dia. Disc with Washer for 1600 Series (Specify Model).....	9903.0517	2
13A	6" Dia. Aluminum Drum (Specify Model) .....	9905.7112	1
13B	6" Dia. Drum Insert (Plastic) with 1" Grommet Hole .....	9955.0019	1
14A	3/4" Swivel-loc Liquidtight Connector .....	9955.0009	2
14B	3/4" Liquidtight Flex Conduit ~(Per Foot) Specify Model.....	9955.0114	Spec Length
14C	Red Dot Junction Box.....	Spec. Collector	1
14D	Red Dot Junction Box Cover w/ Screws.....	9955.0044	1
14E	3/4" Locking Nut for Liquidtight Connector .....	9955.0014	1
19	Trapezoid Frame Assembly (Specify Model) (Steel E-Coated) .....	9908.1000	1
25A	3/8"-16 x 3/4" Spinlock Bolt (Specify Model) .....	9904.2201	12
25B	#10 x 1/2" Long Self Tap Pan Head Screw .....	9958.0003	4
25C	3/8"-16 x 1" Socket Head Cap Screw.....	9904.9202	6
25D	1/4"-20 x 1/2" Hex Washer Head Tap Tight Screw .....	9904.1070	2
25E	5/16"-18 x 3/4" Spin Lock Bolt.....	9904.2101	4
25F	1/2"-13 x 1" Hex Head Bolt.....	9904.1402	2
25G	1/4"-20 x 3/4" Hex Head Cap Screw .....	9904.1001	10
25H	1/4"-20 x 3/4" Hex Washer Head Black Zinc Screw .....	9904.1071	2
26	Collector Cover Gasket .....	9943.0004	1
27A	3/8"-16 Spinlock Nut.....	9904.6200	10
27B	5/16"-18 Large Flange Spinlock Nut.....	9904.6100	2
27C	1/4"-20 Small Flange Spinlock Nut.....	9904.6000	10
27D	1/2"-13 Spin Lock Nut.....	9904.5400	2
27E	1/4"-20 Large Flange Spinlock Nut.....	9904.6002	2
28A	3/8" Flat Washer .....	9954.0007	4
28B	Sprocket Spacer (1" O.D. x 0.381" I.D. x 1/2" Thick).....	9954.0015	6
28C	1-1/2" I.D. Cable Reel Hub Spacer.....	9954.0025	3 or 4
28D	Reducing Washer for Liquidtight Connector.....	9955.0013	2
28E	1" Hub Spacer (Plastic) (Not Shown) (CR1600 Only) .....	9954.0021	2
32A	Hub for Power ECR1600 Series, per P32A-00040 (Specify Model).....	9955.0076	1
32B	Hub for Manual CR1600 Series, per P32A-00030 (Specify Model) .....	9955.0075	1
55	Removable Hand Crank (CR1600 Only) (See ISO-256 for Parts) .....	9914.0031	1
56	1" Rubber Grommet for Drum Insert .....	9955.0032	1
58	AN-250 12V DC Face Mount 1/12 HP 220 RPM Motor.....	9915.0044	1
58	AN-239 12V DC Face Mount 1/5 HP 420 RPM Motor (Optional).....	9915.0040	1
66	Motor Mounting Plate for Trapezoid Frame (Steel E-Coated) .....	9923.0006	1
72A	112T35 x 13-3/8" Dia. Disc Sprocket (Steel E-Coated).....	9910.1321	1
72B	11T35 x 1-3/4" Motor Sprocket.....	9910.1119	1
87	Anodized Threaded Spacer Pipe.....	Spec Model	4