

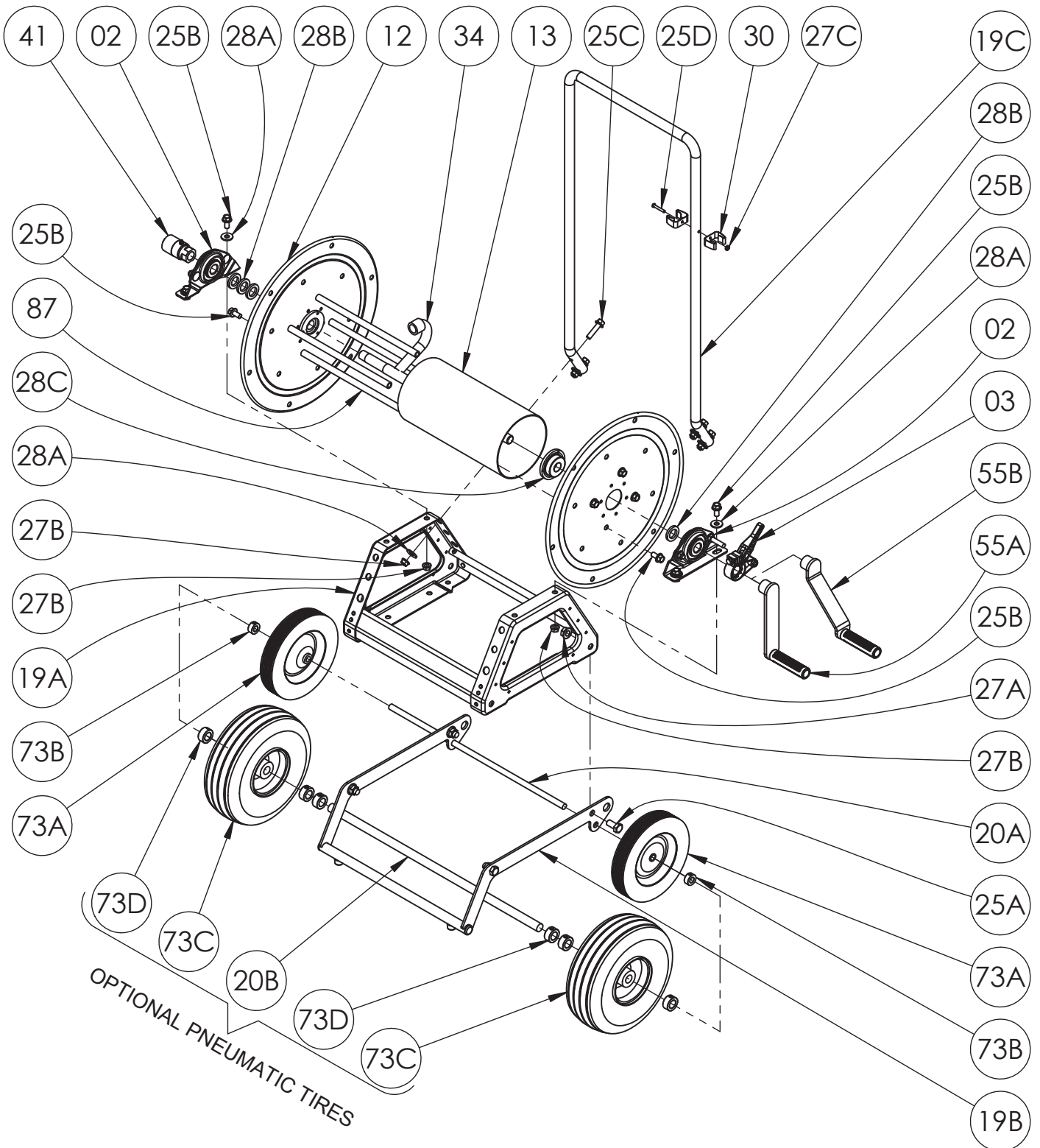


Hannay Reels, Inc.
 553 State Route 143, Westerlo, NY 12193
 www.hannay.com
 Email: reels@hannay.com

Phone 1-518-797-3791
 Toll Free 1-877-GO-REELS (467-3357)
 Fax 1-800-REELING (733-5464)
 Int'l Fax 1-518-797-3259

ISO 48 PARTS LIST

MODEL 1100 & GH100 Portable Hose Reels



PARTS LIST
ISO 48
MODEL 1100 & GH1100 Portable Hose Reels

When Ordering Parts
BE SURE TO SPECIFY COMPLETE MODEL NUMBER and SERIAL NUMBER OF REEL
USE PART NUMBER!

<u>Item No.</u>	<u>Description</u>	<u>Part No.</u>	<u>Quantity</u>
02	1/2" Pipe-Size Self Aligning Bearing Complete (see ISO-210 for parts)	9902.1200	2
03	Cam Lock Drag Brake Complete (see ISO-254 for parts)	9947.0130	1
12	(17-18) 16-1/2" Dia., 14 GA Disc	9903.0516	2
13	Drum, 6" Dia. Aluminum (Specify Model)	9905.7112	1
19A	Trapezoid Frame Assembly (Steel E-Coated) - Specify Model	9908.1000	1
19B	Portable Frame Front Foot Assembly (includes 25A & 27A)	9906.0736	1
19C	Removable Push Handle	9906.0731	1
20A	1/2" Dia. Portable Frame Axle - SST (21" Long)	9906.0735	1
25A	1/2"-13 x 1" Hex Head Bolt	9904.1402	4
25B	3/8"-16 x 3/4" Spinlock Bolt	9904.2201	12
25C	3/8"-16 x 1-1/2" Spinlock Bolt	9904.2204	4
25D	#10-32 x 1-1/4" Slotted Round Head Machine Screw (for Retainer Clips)	9904.8205	1
27A	1/2"-13 Spinlock Nut	9904.5400	4
27B	3/8"-16 Spinlock Nut	9904.6200	8
27C	#10-32 Hex Nut (for Retainer Clips)	9904.4900	1
28A	3/8" Flat Washer	9954.0007	8
28B	1/2" Hub Spacer, 3/16" Thick (Plated Steel)	9954.0020	4
28C	Disc Washer	9965.0040	2
30	3/4" Retaining Clip (#225L)	9965.0055	2
31	5' Lead-In Garden Hose - GH1100 Series Only (not shown)	9965.0060	1
34	1/2" Hub Assembly - 1/2" FNPT Riser Outlet (1100 Series Only)	9901.0610	1
34	1/2" Hub Assembly - 1/2" GHT Riser Outlet - 304 SST (GH1100 Series Only)	9901.0604	1
41	1/2" 90 Deg. FxF Brass Super Swivel Joint w/ Chrome Finish (AFLAS Packing)	9927.8591	1
55A	Threaded Hand Crank (see ISO-255 for parts)	9914.0021	1
73A	1-3/4" x 8" Dia. Wheel for 1/2" Dia. Axle	9965.0065	2
73B	Shaft Collar (1" O.D. x 1/2" I.D. x 7/16" THK)	9955.0251	2
87	Anodized Aluminum Threaded Spacer Pipe	Specify Model	4
<u>OPTIONAL PNEUMATIC TIRES ONLY</u>			
20B	3/4" Dia. Portable Frame Axle - SST (25-1/4" Long)	9906.0739	1
55B	Threaded Offset Hand Crank - for Pneumatic Tires (see ISO-255 for parts)	9914.0071	1
73C	4" x 10" Dia. Pneumatic Tire (for 3/4" Dia. Axle)	9965.0066	2
73D	Shaft Collar (1-1/4" O.D. x 3/4" I.D. x 9/16" THK)	9955.0252	6