



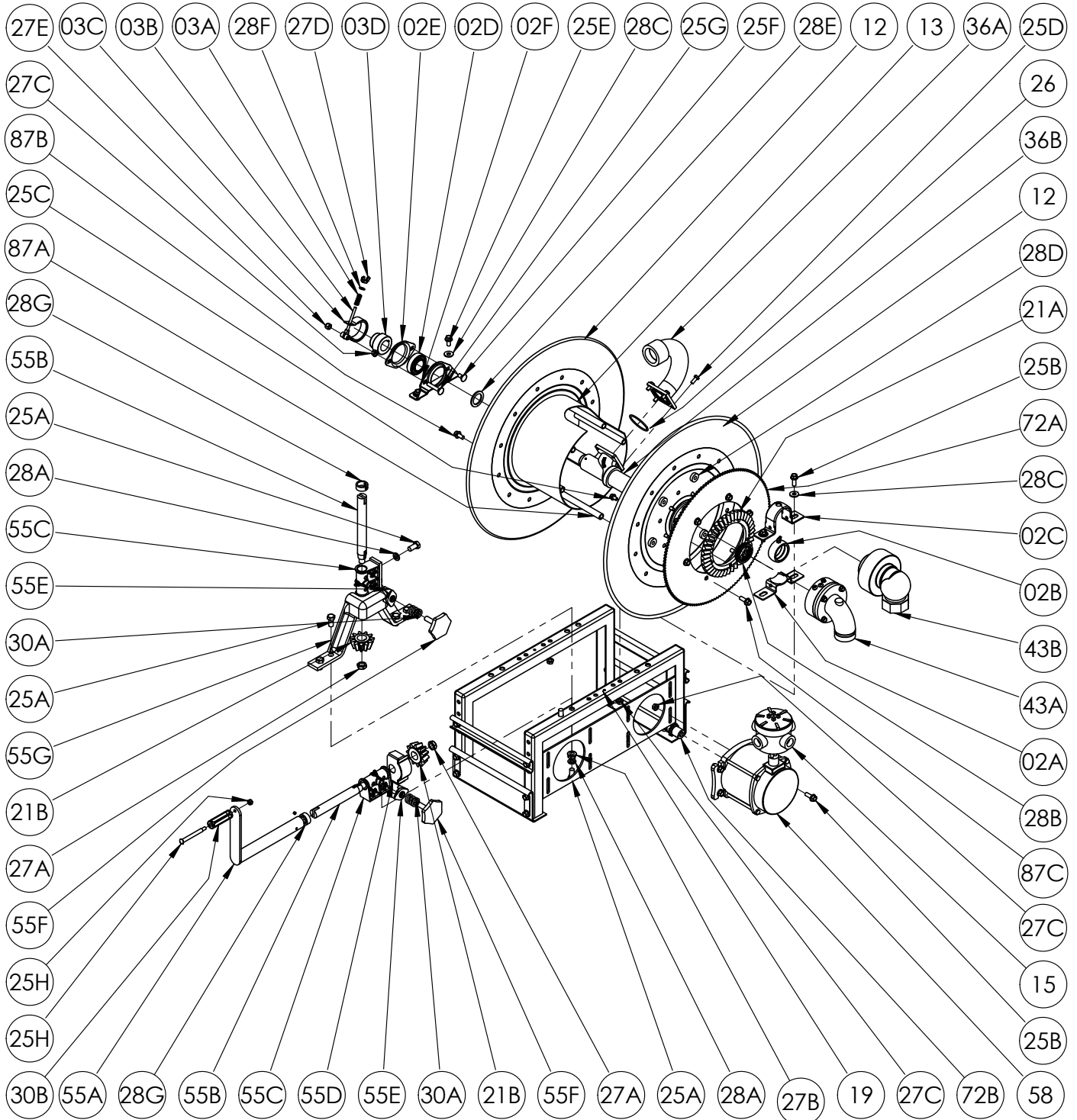
Hannay Reels®
The reel leader.

Hannay Reels, Inc.
553 State Route 143, Westerlo, NY 12193
www.hannay.com
Email: reels@hannay.com

Phone 1-518-797-3791
Toll Free 1-877-GO-REELS (467-3357)
Fax 1-800-REELING (733-5464)
Int'l Fax 1-518-797-3259

ISO 41
PARTS LIST

1-1/2" HOSE REELS
with Fabricated Frame &
Ball Bearing Swivel Joint



PARTS LIST: ISO 41 1-1/2" HOSE REELS with Fabricated Frame & Ball Bearing Swivel Joint

**When Ordering Parts BE SURE TO SPECIFY COMPLETE MODEL NUMBER and SERIAL NUMBER OF REEL
USE PART NUMBER!**

<u>Item No.</u>	<u>Description</u>	<u>Part No.</u>	<u>Quantity</u>
02A	Greasable Bearing Holder (Bottom Strap).....	9902.2950	1
02B	1-1/2" Split Bronze Bearing Insert (W/ Grease Fitting).....	9902.1710	1
02C	Greasable Bearing Holder (Top Strap).....	9902.2955	1
02D	1" Self Aligning Bearing Insert (Plated).....	9902.1500	1
02E	Self Aligning Bearing Holder (Small Piece).....	9902.2800	1
02F	Self-Aligning Pillow Block.....	9902.2900	1
02G	1-1/2" Strap Bearing Complete (Includes 02A,02B and 02C).....	9902.1610	1
02H	1" Self Aligning Bearing Complete (Includes 02D, 02E, 02F, 25F and 27C).....	9902.1400	1
03A	SST Comet Brake Tension Adjustment Spring.....	9947.0096	1
03B	1/4"-20 Comet Brake Tension Adjustment Rod.....	9947.0094	1
03C	Comet Brake Strap.....	9947.0091	1
03D	Comet Brake Hub for 1" Pipe.....	9947.0038	1
03E	Comet Brake Tension Adjuster (Includes 03A, 03B, 27E and 28F).....	9947.0092	1
6	#35 Chain (Not Shown).....	Specify Model	1
12	19-21 Disc (18-3/4" Dia.) ~Spec Model & Front or Back.....	9903.0821	2
12	23-24 Disc (22-3/4" Dia.) ~Spec Model & Front or Back.....	9903.1121	2
12	25-26 Disc (24-3/4" Dia.) ~Spec Model & Front or Back.....	9903.1321	2
12	30-31 Disc (28-3/4" Dia.) ~Spec Model & Front or Back.....	9903.1621	2
13	10-1/2" Diameter Drum ~Spec Model.....	9905.3131	1
15	Red Dot Round Junction Box, Cover and 2 Plugs.....	9917.0061	1
19	1-1/2" Steel Rollform Frame.....	9908.0155	1
21A	H-26 Ring Gear.....	9914.0372	1
21A	H-28 Ring Gear.....	9914.0382	1
21B	H-27 Pinion Gear (Nylon Composite).....	9914.0393	1
21B	H-29 Pinion Gear (Brass).....	9914.0404	1
25A	1/2"-13 x 1" Hex Head Bolt.....	9904.1402	6
25B	3/8"-16 x 1" Spinlock Bolt.....	9904.2202	6
25C	5/16"-18 x 1/2" Spinlock Bolt (For H-26 Ring Gear).....	9904.2158	5
25D	5/16"-18 x 3/4" Hex Head Cap Screw.....	9904.1101	4
25E	3/8"-16 x 3/4" Spinlock Bolt.....	9904.2201	2
25F	3/8"-16 x 3/4" Carriage Bolt.....	9904.0201	1
25G	3/8"-16 x 2" Carriage Bolt.....	9904.0206	1
25H	3/8" Shoulder Bolt w/ Nut.....	9914.0511	1
26	2-3/8" I.D. O-Ring for 1-1/2" Riser.....	9965.0028	1
27A	5/8"-16 SAE Head Nead Nut (ESNA).....	9904.5600	1
27B	1/2"-13 Spinlock Nut.....	9904.5400	4
27C	3/8"-16 Spinlock Nut.....	9904.6200	10
27D	1/4"-20 Comet Brake Wing Nut.....	9947.0095	1
27E	3/8"-16 ESNA Locknut.....	9958.0040	1
28A	1/2" Lock Washer.....	9954.0030	2
28B	1-1/2" Hub Spacer Washer.....	9954.0022	4
28C	3/8" Flat Washer.....	9954.0007	4
28D	Sprocket Spacer (5/16" Thick).....	9954.0017	6
28E	1" Hub Spacer Washer.....	9954.0021	1
28F	1/4" Flat Washer.....	9954.0005	1
28G	PSC-1 Pinion Shaft Collar w/ Set Screws.....	9914.0351	1
30A	Coil (H-31) Brake Spring.....	9914.0451	1
30B	Black Plastic Crank Handle.....	9914.0506	1
30C	Woodruff Key #9 (3/16" x 3/4") for Motor and Comet Brake (Not Shown).....	9916.0080	2
36A	Riser (Steel) ~Spec Model, Riser Fitting Size & Thread (Includes 26).....	9901.3760	1
36A	Riser (Aluminum for Jet Fuel) ~Riser Fitting Size (Includes 26).....	9901.3762	1
36B	1-1/2" Flange Steel Pipe Hub ~Spec Model.....	9901.3640	1
36B	1-1/2" Flange Aluminum (For Jet Fuel) Pipe Hub ~Spec Model.....	9901.3642	1
43A	1-1/2" 90 Degree FxFxVIC WHJ-1590 JT (BUNA Packing).....	9930.4210	1
43A	1-1/2" 90 Degree FxFxVIC WHJ-1590 JT (Viton Packing).....	9930.4220	1
43A	1-1/2" 90 Degree FxFxVIC WHJ-1590AL JT (BUNA-N Packing) (For Jet Fuels).....	9930.4312	1
43B	1-1/2" 90 Degree FxF Full Circle JT (For LPG Gas).....	9930.0531	1
55A	H-18 Crank Handle (10" Length) Complete (Includes 25I and 30B).....	9914.0011	1
55B	Pinion Shaft ~Spec Length.....	9914.0250	1
55C	H-2A Pinion Shaft Bearing.....	9914.0243	1
55D	Gear Guard w/ Pad.....	9914.0618	1
55E	H-3 Brake Pad.....	9914.0433	1
55F	H-30A Brass Brake Wheel.....	9914.0413	1
55G	Vertical Rewind Bracket, Per P55A-00050.....	9914.0233	1
58	SX-001 12V DC 1/2 HP Explosion Proof Motor.....	9915.0003	1
72A	112T35 Disc Sprocket (19-21 Discs).....	9910.1321	1
72A	138T35 Disc Sprocket (23-24 and 25-26 Discs).....	9910.1423	1
72A	180T35 Disc Sprocket (30-31 Discs).....	9910.1526	1
72B	11T35 Motor Sprocket, 1-5/16" Long.....	9910.1118	1
87A	Anodized Threaded Spacer Pipe.....	Specify Model	6
87B	3/8"-16 x 3/4" Spinlock Bolt (For Use with Anodized Threaded Spacer Pipe).....	9904.2201	2
87C	3/8"-16 x 1" Spinlock Bolt (For Use with Anodized Threaded Spacer Pipe).....	9904.2202	6
87D	3/8" Aluminum Pipe Drum Spacers ~Spec Length (Not Shown).....	9904.3200	6
87E	3/8"-16 Carriage Bolt w/ Nut (3/8" Aluminum Pipe Drum Spacers) (Not Shown).....	Specify Model	6