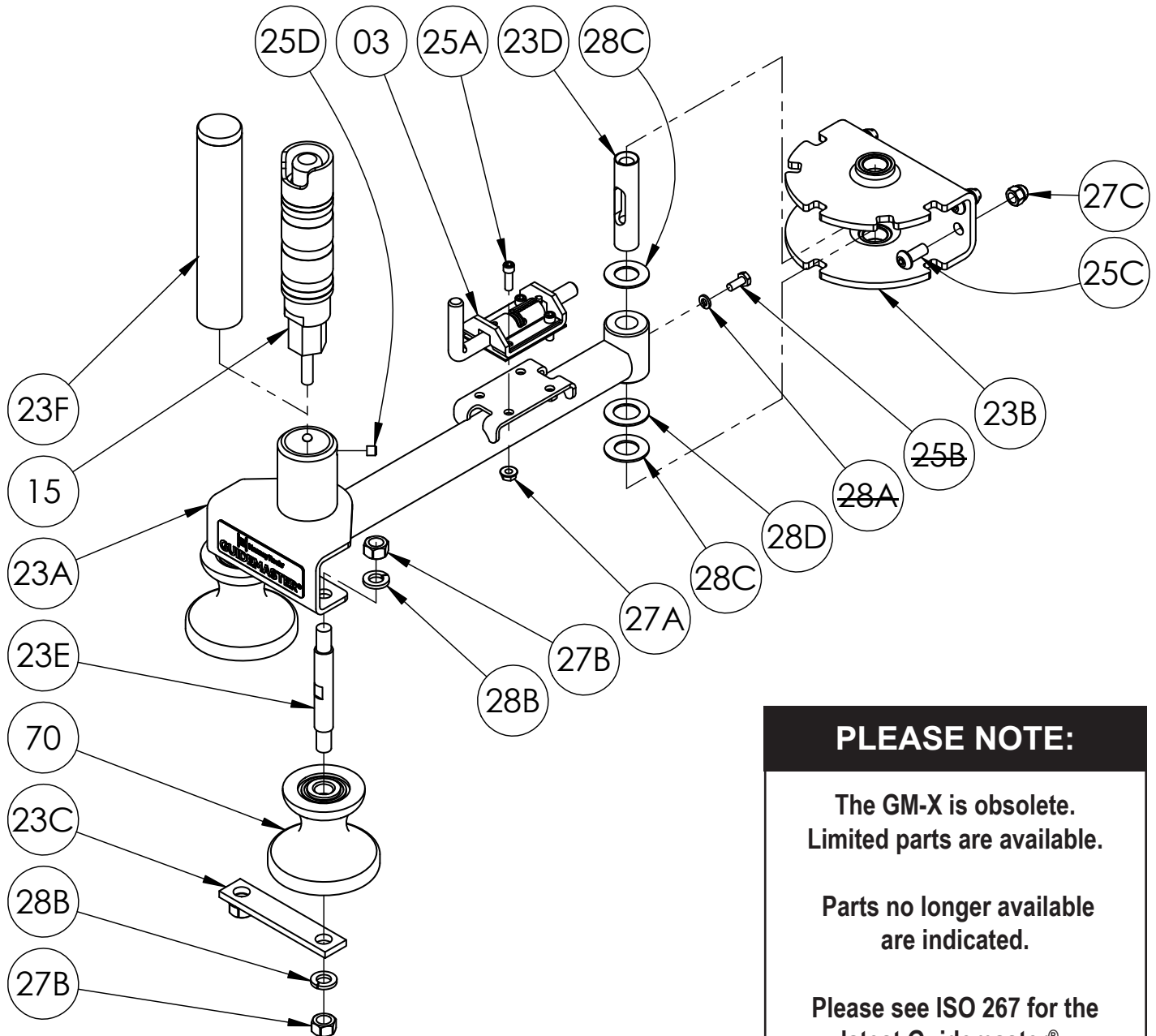


ISO 265
PARTS LIST
GUIDEMASTER (GM-X)



PLEASE NOTE:

The GM-X is obsolete.
Limited parts are available.

Parts no longer available
are indicated.

Please see ISO 267 for the
latest Guidemaster® -
the GM-X (2nd Generation).

**PARTS LIST
ISO 265
Guidemaster (GM-X)**

**When Ordering Parts
BE SURE TO SPECIFY COMPLETE MODEL NUMBER and SERIAL NUMBER OF REEL
USE PART NUMBER!**

<u>Item No.</u>	<u>Description</u>	<u>Part No.</u>	<u>Quantity</u>
-	GM-X Guidemaster® Complete Assembly	9944.0200	-
-	GM-X Guidemaster® Complete Assembly - Less EPS-1 Switch	9944.0205	-
03	Guidemaster® Pinlock Assembly (SST "Slam Latch) w/ Hardware (includes Items 25A & 27A)	9945.1003	1
15	EPS-1 Explosion-Proof Switch	9917.0200	1
23A	Guidemaster® GM-X Tubular Weldment Arm	9944.0207	1
23B	Guidemaster® Mounting Yoke w/ Bronze Bushings	9945.0009	1
23C	Guidemaster® Bottom Roller Plate, per P23A-00220	9945.1004	1
23D	Guidemaster® SST Pivot Pin, per P23A-00060	9945.0024	1
23E	Guidemaster® Roller Mounting Pin (SST), per P23A-00270	9945.1005	2
23F	Guidemaster® GM-X Grip Handle (1-1/2" Dia. SST Tubing x 7-1/2" Long) - for use with w/out EPS-1 Switch.....	9945.0046	1
25A	1/4"-20 x 3/4" SST Socket Head Cap Screw (for Pinlock).....	9945.0054	4
25B	1/4"-20 x 5/8" Hex Head Cap Screw (Armor Coat).....	Not Available	1
25C	3/8"-16 x 7/8" Button Socket Cap Screw w/ Nylok Patch	9945.0010	4
25D	5/16"-18 x 5/16" Allen Set Screw (SST) w/ Nylok Patch.....	9958.0006	2
27A	1/4"-20 Small Flange Spinlock Nut (Armor Coat)	9904.6000	4
27B	1/2"-13 Hex Nut (Armor Coat)	9954.0036	4
27C	3/8"-16 Acorn Nut (Stainless Steel)	9960.0900	4
28A	1/4" Split Lock Washer	Not Available	1
28B	1/2" Split Lock Washer (Armor Coat).....	9954.0030	4
28C	0.812" I.D. x 1-1/2" O.D. x 0.065" THK Stainless Steel Spacer Washer	9954.0038	2
28D	0.886" I.D. x 1-1/2" O.D. x 0.065" THK Bronze Thrust Washer	9954.0039	1
70	Guidemaster® GM-X Hourglass Roller w/ Bearings	9945.1000	2

PLEASE NOTE:

**The GM-X is obsolete.
Limited parts are available.**

**Parts no longer available
are indicated.**

**Please see ISO 267 for the
latest Guidemaster® -
the GM-X (2nd Generation).**