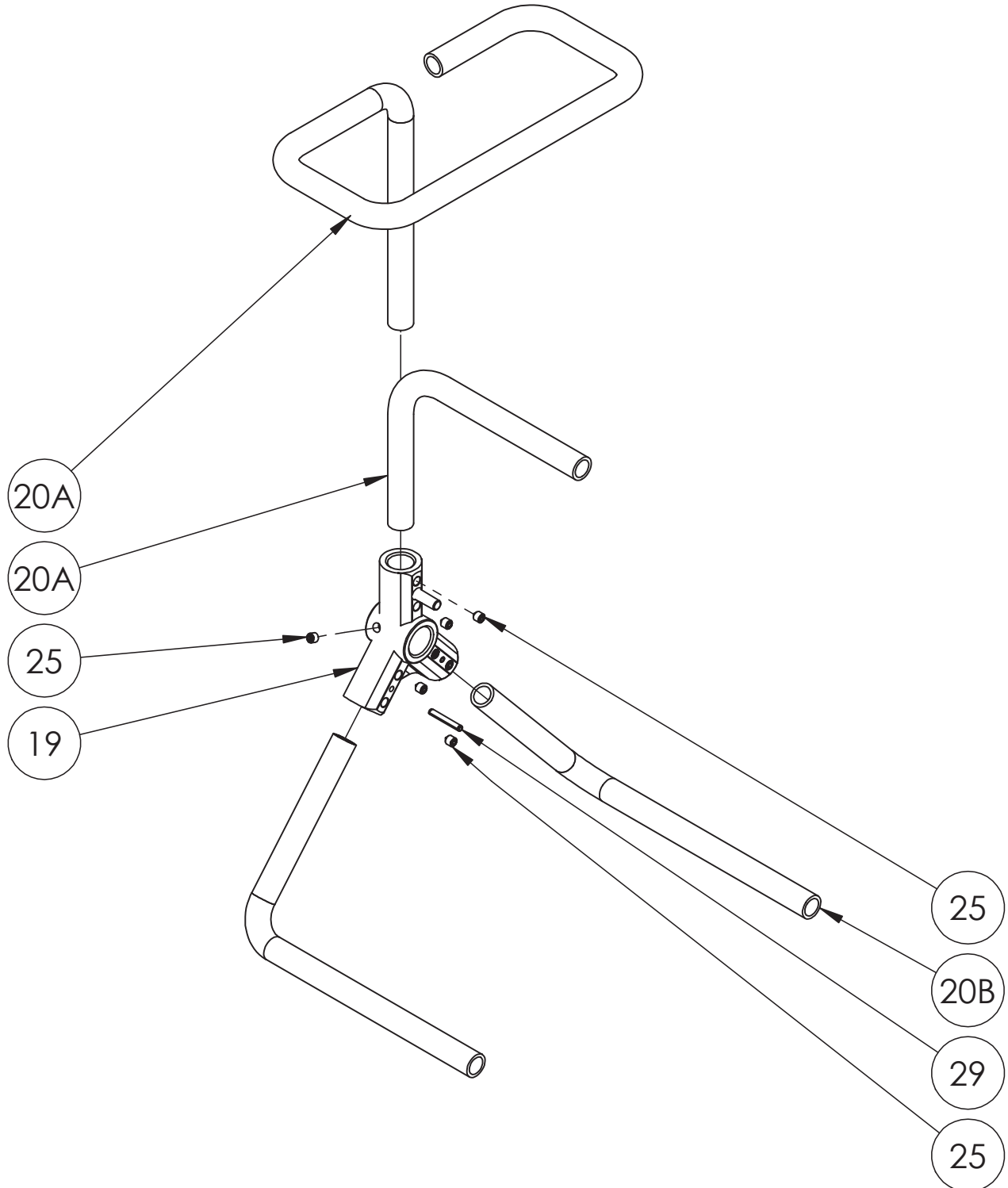


ISO 260
PARTS LIST
MODULAR PORTABLE
REEL FRAME



PARTS LIST
ISO 260
Modular Portable Reel Frame

When Ordering Parts
BE SURE TO SPECIFY COMPLETE MODEL NUMBER and SERIAL NUMBER OF REEL
USE PART NUMBER!

<u>Item No.</u>	<u>Description</u>	<u>Part No.</u>	<u>Quantity</u>
-	C16-10-11 Frame Assembly (New Style)	9906.0680	-
-	C16-14-16 / C16-17-18 / H16-14-16 Frame Assembly (New Style)	9906.0681	-
-	C20-14-16 / C20-17-18 Frame Assembly (New Style)	9906.0682	-
-	AVF Frame Assembly (Aluminum) (New Style)	9906.0683	-
-	CR16-14-16 Frame Assembly (New Style).....	9906.0690	-
-	AVX-100 Frame Assembly w/ Tray	9949.0017	-
19	Center Hub Casting	9906.0710	1
20A	C16-10-11 Handle (Aluminum) (per P20A-02580)	9906.0701	1
20A	C16-14-16 / C16-17-18 / C20-14-16 / C20-17-18 Handle (per P20A-02750)	9906.0707	1
20A	CR16-14-16 Ergo Handle (per DF01698).....	9906.0691	1
20A	AVF Leg/Handle (Aluminum) (per P20A-02750)	9906.0708	1
20B	C16-10-11 Leg (per P20A-02570)	9906.0702	2
20B	C16-14-16 / C16-17-18 Leg (per P20A-02730).....	9906.0703	2
20B	C20-14-16 / C20-17-18 Leg (per P20A-02740).....	9906.0704	2
25	5/16"-18 x 3/8" Cone Point Set Screw	9958.0007	6
29	3/16" x 1-3/8" Rollpin	9914.0951	2