

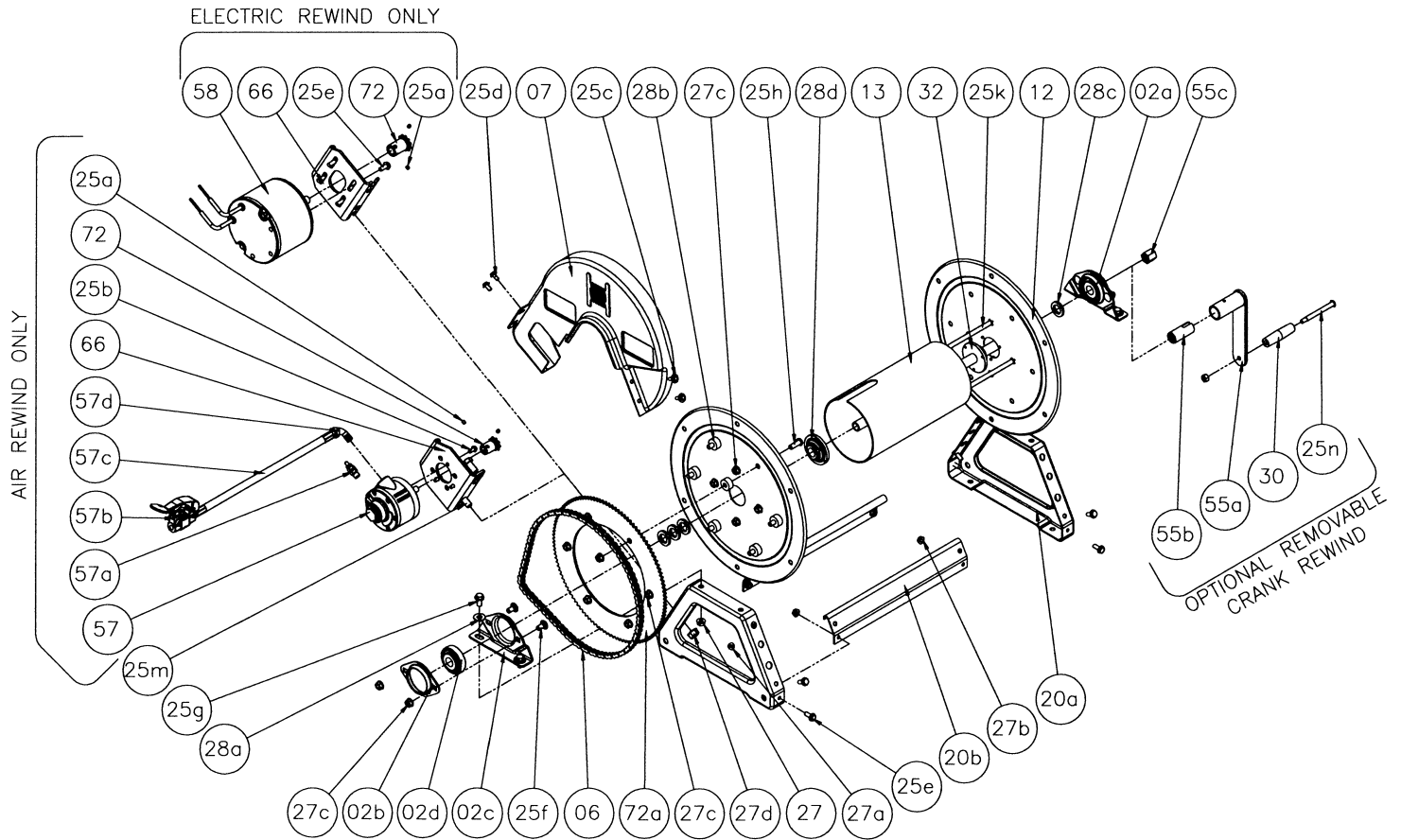


Hannay Reels®

The reel leader.

Hannay Reels, Inc., 553 State Route 143
Westerlo, NY 12193-0159
Telephone 518-797-3791 • Toll Free 1-877-GO-REELS (467-3357)
FAX 1-800-REELING (733-5464)
INT'L FAX (518) 797-3259
Website: www.hannay.com
E-mail: reels@hannay.com

ISO 219 PARTS LIST Series C 1500 Power Rewind



PARTS LIST
ISO 219
Series C 1500 - Power Rewind

When ordering parts

BE SURE TO SPECIFY COMPLETE MODEL NUMBER and SERIAL NUMBER OF REEL.
USE PART NUMBER!

<u>Item No.</u>	<u>Description</u>	<u>PART NUMBER</u>	<u>Quantity</u>
02a	Self Aligning Bearing Complete - (1/2" Bore).....	9902.1200	2
02b	Self Aligning Bearing Holder	9902.2800	2
02c	Self Aligning Bearing Pillowblock	9902.2900	2
02d	Self Aligning Bearing Insert - (1/2" Bore)	9902.1300	2
06	#35 Chain	9912.0028	1
07	Chain Guard, Molded	9957.0030	1
12	17-18 Disc	9903.0516	2
13	Drum - Aluminum - 6" Dia.(Specify Model)	9905.7112	1
20	Frame Assembly 1500 Series (Complete)	9908.1000	1
20a	Frame, 1500 Series.....	9906.0011	2
20b	Foot, 1500 Series	9907.6000	2
25a	1/4" - 20 X 1/4" Allen Set Screw	9958.0002	2
25c	1/4" - 20 x 3/4" Hex Washer Head Black Zinc Screw	9904.1071	2
25d	1/4" - 20 x 1/2" Hex Washer Head Tap Tight Screw	9904.1070	2
25e	5/16" - 18 x 3/4" Spinlock Bolt.....	9904.2101	12
25f	3/8" - 16 x 3/4" Bearing Bolt.....	9904.0201	4
25g	3/8" - 16 x 3/4" Spinlock Bolt	9904.2201	4
25h	3/8"-16 x 1" Button Head Cap Screw.....	9904.9202	6
25k	3/8" - 16 Carriage Bolt.....	Specify Model	4
25m	1/2"-13 x 1" Hex Head Bolt	9904.1402	2
27a	1/4" - 20 Spinlock Nut	9904.6000	2
27b	5/16" - 18 Spinlock Nut	9904.5602	8
27c	3/8" - 16 Spinlock Nut	9904.6200	18
27d	1/2" - 13 Hex Head Nut.....	9904.5400	2
28a	3/8" Flat Washer.....	9954.0007	4
28b	Disc Sprocket Spacer.....	9954.0015	6
28c	Hub Spacer	9954.0020	As Req'd
28d	Disc Washer	9965.0040	2
32	Hub Assembly - Straight Iron Pipe	9901.1050	1
55c	1/2" Pipe Cap	9965.0013	1
72a	112T35 x 13-3/8" Dia Disc Sprocket	9910.1321	1
<u>Optional Removable Crank Rewind</u>			
25n	Crank Handle Bolt w/ Nut.....	9914.0511	1
30	Hand Crank Handle.....	9914.0505	
55a	Hand Crank	9914.0051	1
55b	1/2" Adapter for Removable Crank	9914.0053	1
<u>Air Motor Only</u>			
25b	1/4" - 20 X 1/4" Spinlock Bolt.....	9904.1058	3
57	#4 AM Gast Air Motor (Face Mount)	9918.1122	1
57a	Speed Control Muffler	9919.0006	1
57b	Schrader Valve # 3420.....	9919.0004	1
57c	18" x 1/4" x 1/4" Air Hose.....	9919.0007	1
57d	1/4" 90 Deg Pipe Elbow	9950.0013	1
66	Motor Mounting Plate - Air Motor	9923.0013	1
72	9T35 X 1-3/4" Motor Sprocket - Air Motor.....	9910.1015	1
<u>Electric Motor Only</u>			
58	227 12V DC Non Explosion Proof Motor (Face Mount).....	9915.0042	1
66	Motor Mounting Plate - Electric Motor.....	9923.0006	1
72	11T35 x 1-3/4" Motor Sprocket - Electric Motor	9910.1119	1