



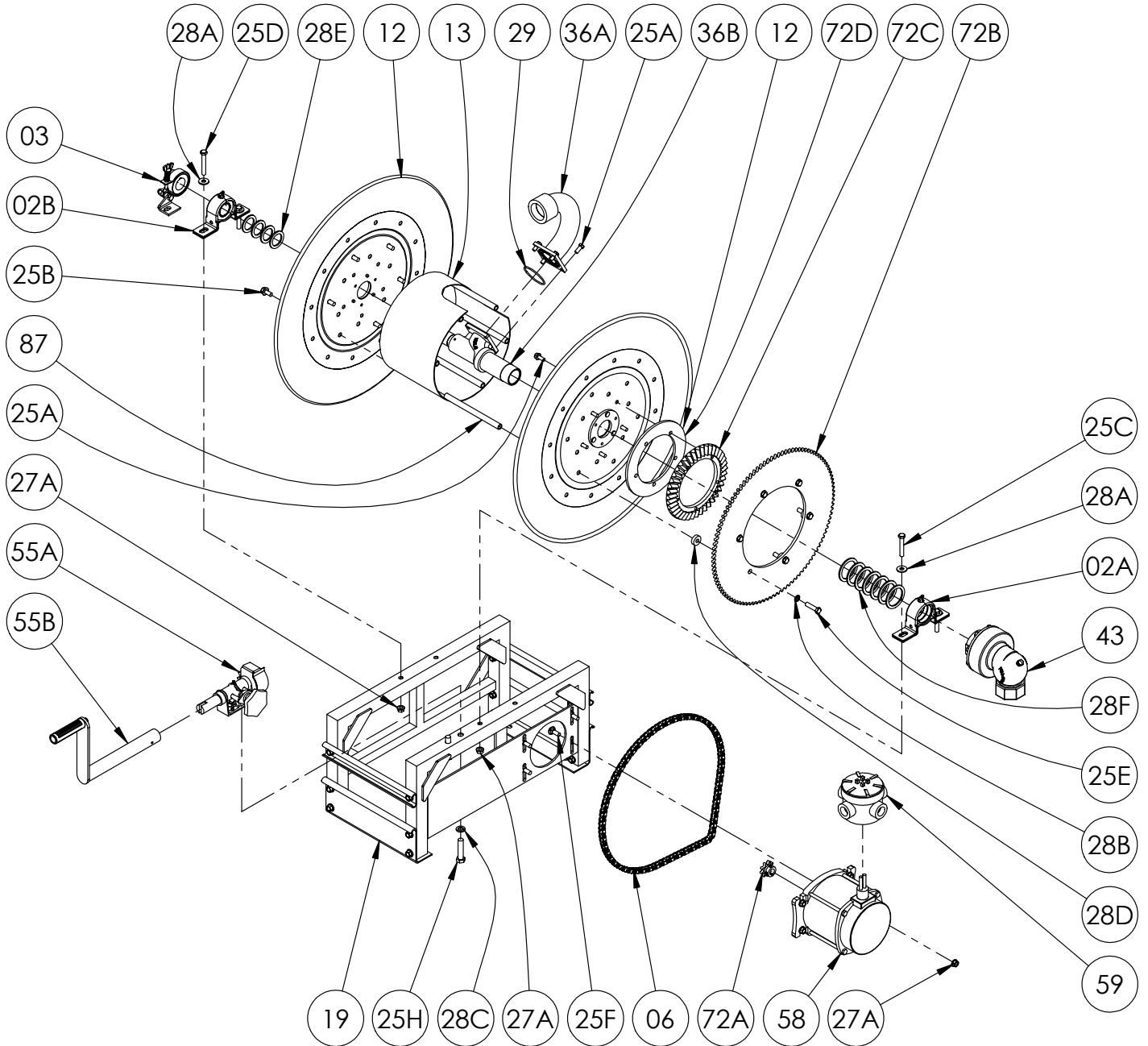
Hannay Reels®
The reel leader.

Hannay Reels, Inc.
553 State Route 143, Westerlo, NY 12193
www.hannay.com
Email: reels@hannay.com

Phone 1-518-797-3791
Toll Free 1-877-GO-REELS (467-3357)
Fax 1-800-REELING (733-5464)
Int'l Fax 1-518-797-3259

ISO 204
PARTS LIST

SERIES PB
Aluminum
w/ Square Tubing Frame



PARTS LIST
ISO 204
Series PB - Aluminum w/ Square Tubing Frame

When Ordering Parts
BE SURE TO SPECIFY COMPLETE MODEL NUMBER and SERIAL NUMBER OF REEL
USE PART NUMBER!

| <u>Item No.</u> | <u>Description</u> | <u>Part No.</u> | <u>Qty</u> |
|-----------------|--|------------------------|-------------|
| 02A | Stainless Steel Front Bearing Complete (W/ Split Bearing) (See ISO-211 for Parts)..... | 9902.1622 | 1 |
| 02B | Stainless Steel Back Bearing Complete (See ISO-211 for Parts) | 9902.1640 | 1 |
| 03 | Strap Brake Assembly (See ISO-212 for Parts) | 9947.0099 | 1 |
| 06 | Chain, #40 | Specify Model | Spec Length |
| 12 | Aluminum Disc Assembly (Specify Polished/Unpolished) | Specify Model/Serial # | 2 |
| 13 | Aluminum Drum, 10-1/2" Diameter (Specify Model)..... | 9905.5132 | 1 |
| 19 | Aluminum Square Tubing Frame Assembly (Specify Polished/Unpolished) | Specify Model | 1 |
| 25A | 5/16"-18 x 3/4" Stainless Steel Hex Head Bolt | 9960.0002 | 9 |
| 25B | 3/8"-16 x 3/4" Stainless Steel Spinlock Bolt | 9960.0009 | 6 or 12 |
| 25C | 3/8"-16 x 2-1/4" Stainless Steel Spinlock Bolt | 9960.0014 | 3 or 4 |
| 25D | 3/8"-16 x 2-1/2" Stainless Steel Hex Head Bolt (For Brake Bracket) | 9960.0013 | 1 |
| 25E | 3/8"-16 x 1-1/2" Stainless Steel Hex Head Bolt (For 104T40 Sprocket)..... | 9960.0015 | 6 |
| 25F | 3/8"-16 x 1" Stainless Steel Carriage Bolt | 9960.0100 | 4 |
| 25G | 3/8"-16 x 1" Stainless Steel Button Head Screw (For 134T40 Sprocket) (Not Shown) | 9960.0093 | 6 |
| 25H | 1/2"-13 x 2-1/4" Stainless Steel Hex Head Bolt..... | 9960.0074 | 2 |
| 27A | 3/8"-16 Stainless Steel Spinlock Nut | 9960.0091 | 8 |
| 27B | 3/8"-16 Stainless Steel Hex Nut (For 134T40 Sprocket) (Not Shown) | 9960.0007 | 6 |
| 28A | 3/8" Stainless Steel Flat Washer | 9960.0010 | 4 |
| 28B | 3/8" Internal Tooth Lockwasher (For 104T40 Sprocket) | 9954.0095 | 6 |
| 28C | 1/2" Stainless Steel Lock Washer..... | 9960.0017 | 2 |
| 28D | 5/16" Thick Sprocket Spacer | 9954.0017 | 6 |
| 28E | 1" Hub Spacer Washer (Stainless Steel)..... | 9960.0061 | 4 |
| 28F | 1-1/2" Hub Spacer Washer (Stainless Steel)..... | 9960.0062 | 7 |
| 29 | O-Ring | 9965.0028 | 1 |
| 36A | 1-1/2" E-Coated Riser Only | 9901.3767 | 1 |
| 36B | 1-1/2" Flanged E-Coated Hub Only (Specify Model/Serial Number)..... | 9901.3641 | 1 |
| 43 | 1-1/2" 90 Deg. FxF Swivel Joint | 9930.0531 | 1 |
| 55A | Manual Rewind Assembly W/ H-27 (See ISO-209 for Parts) | 9914.0200 | 1 |
| 55B | Stainless Steel Crank Handle, H-18 Complete (See ISO-214 for Parts)..... | 9914.0014 | 1 |
| 58 | Motor, 12 Volt Explosion-Proof | 9915.0009 | 1 |
| 59 | Junction Box Complete..... | 9917.0060 | 1 |
| 72A | Motor Sprocket, 9T40 x 1-5/16 | 9910.0917 | 1 |
| 72B | 104T40 Chrome Silver Disc Sprocket | 9910.3121 | 1 |
| 72B | 134T40 Chrome Silver Disc Sprocket (Not Shown) | 9910.3125 | 1 |
| 72C | Ring Gear, H-26..... | 9914.0372 | 1 |
| 72D | 1/4" Thick Backing Plate for H26 Ring Gear..... | 9914.0581 | 1 |
| 87 | Anodized Threaded Spacer Pipe..... | Spec Model | 6 |