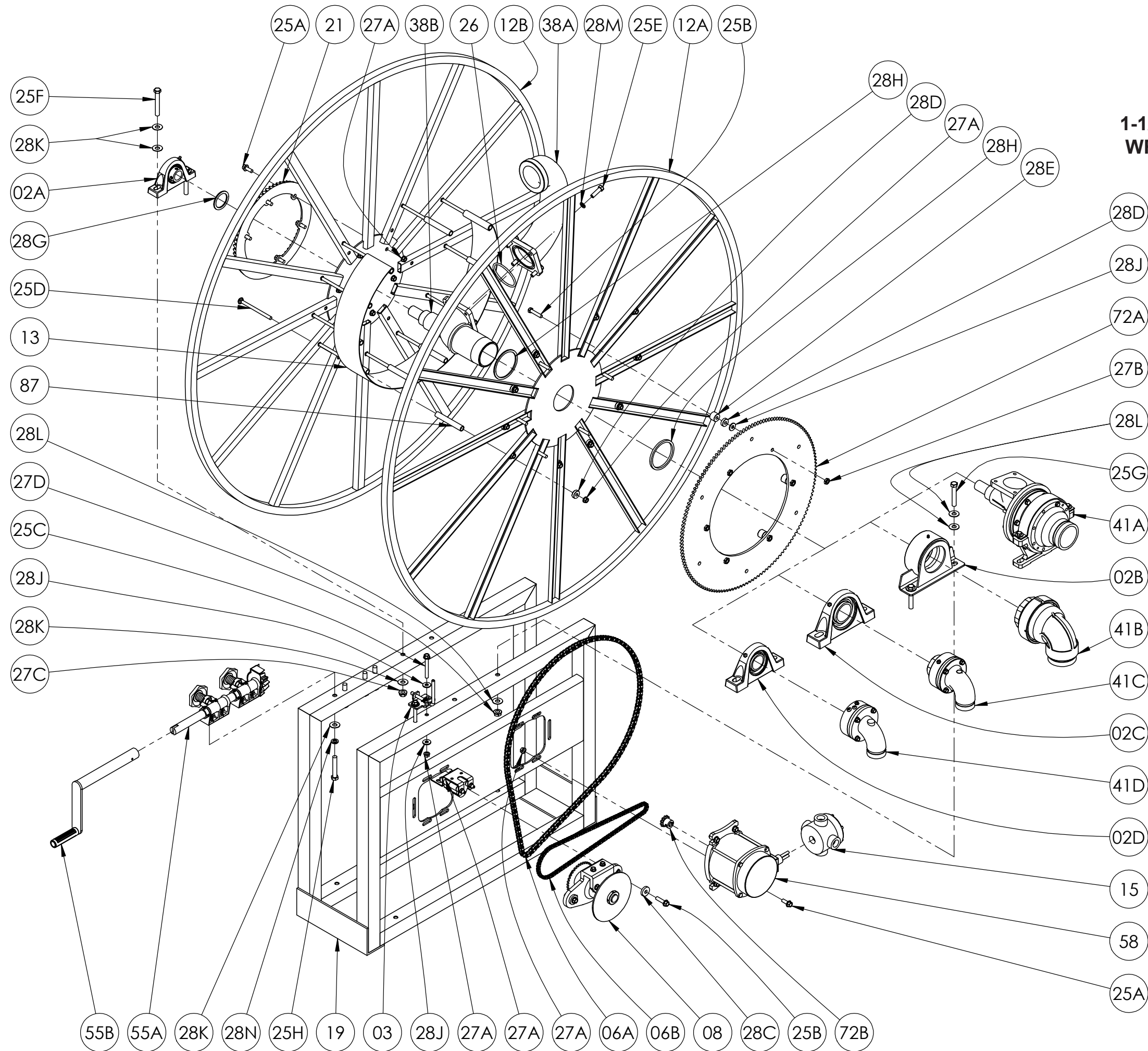


ISO 197
PARTS LIST
SERIES 5000
1-1/2" thru 3" SINGLE
WRAP HOSE REELS





Hannay Reels, Inc.
553 State Route 143, Westerlo, NY 12193
www.hannay.com
Email: reels@hannay.com

Phone 1-518-797-3791
Toll Free 1-877-GO-REELS (467-3357)
Fax 1-800-REELING (733-5464)
Int'l Fax 1-518-797-3259

ISO 197
PARTS LIST

SERIES 5000
1-1/2" thru 3" SINGLE
WRAP HOSE REELS

PARTS LIST
ISO 197

SERIES 5000 1-1/2" thru 3" SINGLE WRAP HOSE REELS

When Ordering Parts
BE SURE TO SPECIFY COMPLETE MODEL NUMBER and SERIAL NUMBER OF REEL
USE PART NUMBER!

When Ordering Parts
BE SURE TO SPECIFY COMPLETE MODEL NUMBER and SERIAL NUMBER OF REEL
USE PART NUMBER!

Item No.	Description	Part No.	Quantity
02A	1-1/4" Pillow Block Bearing.....	9902.0300	1
02B	3-1/2" Fabricated Bearing (for 3" reels only).....	9902.2403	1
02C	2-3/8" Pillow Block Bearing (for 2" reels only).....	9902.0500	1
02D	1-7/8" Pillow Block Bearing (for 1-1/2" reels only).....	9902.0400	1
03	PL-1 Pinlock.....	9965.0030	1
06A	Chain #40 for Disc Sprocket.....	Specify Model	1
06B	Chain #35 for Clutch/Reduction Unit.....	Specify Model	1
08	Reduction Unit (See ISO-155 for Parts).....	Specify Model	1
08	Manual Clutch & Reduction Unit (See ISO-160 for Parts).....	Specify Model	1
08	Electric Clutch & Reduction Unit (See ISO-249 for Parts).....	Specify Model	1
12A	Front Disc (Spoked).....	Specify Model	1
12B	Back Disc (Spoked).....	Specify Model	1
13	Drum (Wrap-Around Style).....	Specify Model	1
15	Junction Box Complete.....	9917.0060	1
19	Complete 5000 Series Frame Assembly.....	Specify Model	1
21	H-28 Ring Gear.....	9914.0382	1
25A	3/8"-16 x 1" Spinlock Bolt.....	9904.2202	10
25B	3/8"-16 x 2" Hex Head Bolt.....	9904.1206	8
25B	3/8"-16 x 3" Hex Head Bolt.....	9904.1208	2
25C	3/8"-16 x 2-3/4" Hex Head Bolt.....	9904.2262	2
25D	3/8"-16 Carriage Bolt with Nut.....	Specify Model	11
25E	7/16"-14 x 1-1/2" Hex Head Bolt (for 3" reels only).....	9904.1304	4
25E	3/8"-16 x 1-1/4" Hex Head Bolt (for 2" reels only).....	9904.1203	4
25E	5/16"-18 x 1" Hex Head Bolt (for 1-1/2" reels only).....	9904.1102	4
25F	1/2"-13 x 3-1/2" Hex Head Bolt.....	9904.1409	2
25G	1/2"-13 x 3-1/2" Hex Head Bolt (For 3" Fabricated Bearing).....	9904.1409	2
25G	1/2"-13 x 4" Hex Head Bolt (For I-Hub & 1-1/2" Pillow Block Bearing).....	9904.1410	2
25G	5/8"-11 x 4-1/2" Hex Head Bolt (For 2" Pillow Block Bearing).....	9904.1509	2
25H	1/2"-13 x 3" Hex Head Bolt.....	9904.1408	4
26	O-Ring for 3" Reel.....	9965.0025	1
26	O-Ring for 2" & 1-1/2" Reels.....	9965.0028	1
27A	3/8"-16 Spinlock Nut.....	9904.6200	19
27B	3/8"-16 Hex Jam Nut.....	9965.0012	6
27C	1/2-13 Spinlock Nut.....	9904.5400	2
27D	1/2-13 Spinlock Nut (3" Fabricated Bearing, I-Hub & 1-1/2" Pillow Block Bearing).....	9904.5400	2
27D	5/8"-11 Spinlock Nut (For 2" Pillow Block Bearing).....	9904.5607	2

Item No.	Description	Part No.	Quantity
28A	Clutch Spacer (2" OD x 1/32" thk) (Not Shown).....	9954.0048	8
28B	Clutch Spacer (2" OD x 1-1/4" thk) (Not Shown).....	9954.0049	2
28C	Spacer for Clutch Mtg. Bolts (1.25" OD x 13/32" ID x 1/4" thk).....	9954.0047	2
28D	Sprocket Spacer (1" OD x .381" ID x 5/16" thk).....	9954.0016	6
28E	Sprocket Spacer (1" OD x .381" ID x 3/4" thk).....	9922.0033	6
28F	Ring Gear Backing Plate (Not Shown) (Specify Model).....	9914.0582	1
28G	Hub Spacer, 1" Reels Only.....	9954.0021	As Needed
28H	Hub Spacer, 1-1/2" Reels Only.....	9954.0022	As Needed
28H	Hub Spacer, 2" Reels Only.....	9954.0023	As Needed
28H	Hub Spacer, 3" Reels Only.....	9954.0018	As Needed
28J	3/8" Flat Washer.....	9954.0007	8
28K	1/2" Flat Washer.....	9954.0008	10
28L	1/2" Flat Washer (3" Fabricated Bearing, I-Hub & 1-1/2" Pillow Block Bearing).....	9954.0008	6
28L	5/8" Flat Washer (For 2" Pillow Block Bearing).....	9954.0004	6
28M	5/16" Lock Washer (For 1-1/2" Risers).....	9954.0094	4
28M	3/8" Lock Washer (For 2" Risers).....	9954.0095	4
28M	7/16" Lock Washer (For 3" Risers).....	9954.0029	4
28N	1/2" Lock Washer.....	9954.0030	4
29	Woodruff Key for Motor (Not Shown).....	9916.0080	1
38A	3" Aluminum Riser w/3" FNPT Threads.....	9901.7462	1
38A	2" Aluminum Riser w/2" FNPT Threads.....	9901.5762	1
38A	1-1/2" SST Riser w/1-1/2" FNPT Threads.....	9901.3764	1
38A	1-1/2" Iron Pipe Riser w/1-1/2" FNPT Threads.....	9901.3760	1
38B	3" Flanged Aluminum Hub Only (Specify Model).....	9901.7842	1
38B	2" Flanged Aluminum Hub Only (Specify Model).....	9901.5642	1
38B	1-1/2" Flanged Aluminum Hub Only (Specify Model).....	9901.3642	1
38B	1-1/2" Flanged Iron Pipe Hub Only (Specify Model).....	9901.3640	1
41A	3" Straight I-Hub (Victaulic Inlet).....	9901.7931	1
41B	3" 90° FxVic Aluminum Joint.....	9933.6302	1
41C	2" 90° F x 1.5" F x 2" Vic Ductile Iron Joint (WHJ-290).....	9931.4721	1
41C	2" 90° FxVic Aluminum Joint (Not Shown).....	9931.6302	1
41D	1-1/2" 90° FxFxVic Joint (WHJ-1590) (Not Shown).....	9930.4210	1
41D	1-1/2" 90° FxFxVic Aluminum Joint (WHJ-1590-AL).....	9930.4312	1
55A	Complete Double Bearing Rewind Assembly (See ISO-209 for Parts).....	9914.0211	1
55B	H-18 Crank Handle (See ISO-214 for Parts).....	9914.0011	1
56	Heavy-Duty Tie Wrap (for strapping hose) (Not Shown).....	9965.0088	1
58	12 Volt DC Explosion Proof Motor (2/3 HP, 500 RPM).....	9915.0009	1
72A	Disc Sprocket, 146T40.....	9910.3128	1
72B	11T35 x 3/4" Lg Motor Sprocket.....	9910.1116	1
87	3/8" Spacer Pipe (Specify Model).....	9904.3200	11