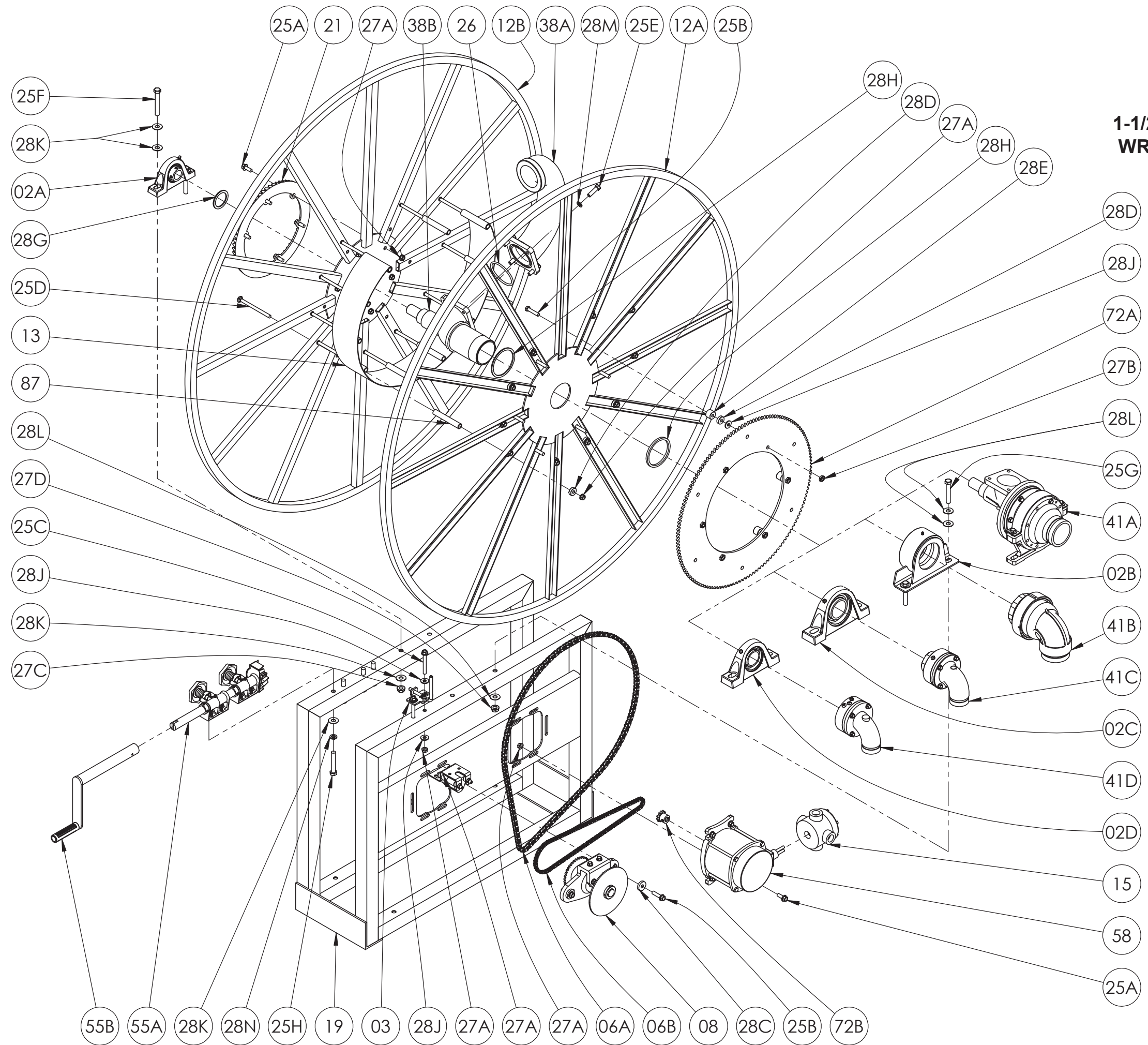


ISO 197
PARTS LIST
SERIES 5000
1-1/2" thru 3" SINGLE
WRAP HOSE REELS





Hannay Reels, Inc.
553 State Route 143, Westerlo, NY 12193
www.hannay.com
Email: reels@hannay.com

Phone 1-518-797-3791
Toll Free 1-877-GO-REELS (467-3357)
Fax 1-800-REELING (733-5464)
Int'l Fax 1-518-797-3259

**ISO 197
PARTS LIST**

**SERIES 5000
1-1/2" thru 3" SINGLE
WRAP HOSE REELS**

**PARTS LIST
ISO 197**

SERIES 5000 1-1/2" thru 3" SINGLE WRAP HOSE REELS

**When Ordering Parts
BE SURE TO SPECIFY COMPLETE MODEL NUMBER and SERIAL NUMBER OF REEL
USE PART NUMBER!**

**When Ordering Parts
BE SURE TO SPECIFY COMPLETE MODEL NUMBER and SERIAL NUMBER OF REEL
USE PART NUMBER!**

Item No.	Description	Part No.	Quantity
02A	1-1/4" Pillow Block Bearing.....	9902.0300	1
02B	3-1/2" Fabricated Bearing (for 3" reels only).....	9902.2403	1
02C	2-3/8" Pillow Block Bearing (for 2" reels only).....	9902.0500	1
02D	1-7/8" Pillow Block Bearing (for 1-1/2" reels only).....	9902.0400	1
03	PL-1 Pinlock.....	9965.0030	1
06A	Chain #40 for Disc Sprocket.....	Specify Model	1
06B	Chain #35 for Clutch/Reduction Unit.....	Specify Model	1
08	Reduction Unit (See ISO-155 for Parts).....	Specify Model	1
08	Manual Clutch & Reduction Unit (See ISO-160 for Parts).....	Specify Model	1
08	Electric Clutch & Reduction Unit (See ISO-249 for Parts).....	Specify Model	1
12A	Front Disc (Spoked).....	Specify Model	1
12B	Back Disc (Spoked).....	Specify Model	1
13	Drum (Wrap-Around Style).....	Specify Model	1
15	Junction Box Complete.....	9917.0060	1
19	Complete 5000 Series Frame Assembly.....	Specify Model	1
21	H-28 Ring Gear.....	9914.0382	1
25A	3/8"-16 x 1" Spinlock Bolt.....	9904.2202	10
25B	3/8"-16 x 2" Hex Head Bolt.....	9904.1206	8
25B	3/8"-16 x 3" Hex Head Bolt.....	9904.1208	2
25C	3/8"-16 x 2-3/4" Hex Head Bolt.....	9904.2262	2
25D	3/8"-16 Carriage Bolt with Nut.....	Specify Model	11
25E	7/16"-14 x 1-1/2" Hex Head Bolt (for 3" reels only).....	9904.1304	4
25E	3/8"-16 x 1-1/4" Hex Head Bolt (for 2" reels only).....	9904.1203	4
25E	5/16"-18 x 1" Hex Head Bolt (for 1-1/2" reels only).....	9904.1102	4
25F	1/2"-13 x 3-1/2" Hex Head Bolt.....	9904.1409	2
25G	1/2"-13 x 3-1/2" Hex Head Bolt (For 3" Fabricated Bearing).....	9904.1409	2
25G	1/2"-13 x 4" Hex Head Bolt (For I-Hub & 1-1/2" Pillow Block Bearing).....	9904.1410	2
25G	5/8"-11 x 4-1/2" Hex Head Bolt (For 2" Pillow Block Bearing).....	9904.1509	2
25H	1/2"-13 x 3" Hex Head Bolt.....	9904.1408	4
26	O-Ring for 3" Reel.....	9965.0025	1
26	O-Ring for 2" & 1-1/2" Reels.....	9965.0028	1
27A	3/8"-16 Spinlock Nut.....	9904.6200	19
27B	3/8"-16 Hex Jam Nut.....	9965.0012	6
27C	1/2"-13 Spinlock Nut.....	9904.5400	2
27D	1/2"-13 Spinlock Nut (3" Fabricated Bearing, I-Hub & 1-1/2" Pillow Block Bearing).....	9904.5400	2
27D	5/8"-11 Spinlock Nut (For 2" Pillow Block Bearing).....	9904.5607	2

Item No.	Description	Part No.	Quantity
28A	Clutch Spacer (2" OD x 1/32" thk) (Not Shown).....	9954.0048	8
28B	Clutch Spacer (2" OD x 1-1/4" thk) (Not Shown).....	9954.0049	2
28C	Spacer for Clutch Mtg. Bolts (1.25" OD x 13/32" ID x 1/4" thk).....	9954.0047	2
28D	Sprocket Spacer (1" OD x .381" ID x 5/16" thk).....	9954.0016	6
28E	Sprocket Spacer (1" OD x .381" ID x 3/4" thk).....	9922.0033	6
28F	Ring Gear Backing Plate (Not Shown) (Specify Model).....	9914.0582	1
28G	Hub Spacer, 1" Reels Only.....	9954.0021	As Needed
28H	Hub Spacer, 1-1/2" Reels Only.....	9954.0022	As Needed
28H	Hub Spacer, 2" Reels Only.....	9954.0023	As Needed
28H	Hub Spacer, 3" Reels Only.....	9954.0018	As Needed
28J	3/8" Flat Washer.....	9954.0007	8
28K	1/2" Flat Washer.....	9954.0008	10
28L	1/2" Flat Washer (3" Fabricated Bearing, I-Hub & 1-1/2" Pillow Block Bearing).....	9954.0008	6
28L	5/8" Flat Washer (For 2" Pillow Block Bearing).....	9954.0004	6
28M	5/16" Lock Washer (For 1-1/2" Risers).....	9954.0094	4
28M	3/8" Lock Washer (For 2" Risers).....	9954.0095	4
28M	7/16" Lock Washer (For 3" Risers).....	9954.0029	4
28N	1/2" Lock Washer.....	9954.0030	4
29	Woodruff Key for Motor (Not Shown).....	9916.0080	1
38A	3" Aluminum Riser w/3" FNPT Threads.....	9901.7462	1
38A	2" Aluminum Riser w/2" FNPT Threads.....	9901.5762	1
38A	1-1/2" SST Riser w/1-1/2" FNPT Threads.....	9901.3764	1
38A	1-1/2" Iron Pipe Riser w/1-1/2" FNPT Threads.....	9901.3760	1
38B	3" Flanged Aluminum Hub Only (Specify Model).....	9901.7842	1
38B	2" Flanged Aluminum Hub Only (Specify Model).....	9901.5642	1
38B	1-1/2" Flanged Aluminum Hub Only (Specify Model).....	9901.3642	1
38B	1-1/2" Flanged Iron Pipe Hub Only (Specify Model).....	9901.3640	1
41A	3" Straight I-Hub (Victaulic Inlet).....	9901.7931	1
41B	3" 90° FxVic Aluminum Joint.....	9933.6302	1
41C	2" 90° F x 1.5" F x 2" Vic Ductile Iron Joint (WHJ-290).....	9931.4721	1
41C	2" 90° FxVic Aluminum Joint (Not Shown).....	9931.6302	1
41D	1-1/2" 90° FxFxVic Joint (WHJ-1590) (Not Shown).....	9930.4210	1
41D	1-1/2" 90° FxFxVic Aluminum Joint (WHJ-1590-AL).....	9930.4312	1
55A	Complete Double Bearing Rewind Assembly (See ISO-209 for Parts).....	9914.0211	1
55B	H-18 Crank Handle (See ISO-214 for Parts).....	9914.0011	1
56	Heavy-Duty Tie Wrap (for strapping hose) (Not Shown).....	9965.0088	1
58	12 Volt DC Explosion Proof Motor (2/3 HP, 500 RPM).....	9915.0009	1
72A	Disc Sprocket, 146T40.....	9910.3128	1
72B	11T35 x 3/4" Lg Motor Sprocket.....	9910.1116	1
87	3/8" Spacer Pipe (Specify Model).....	9904.3200	11