

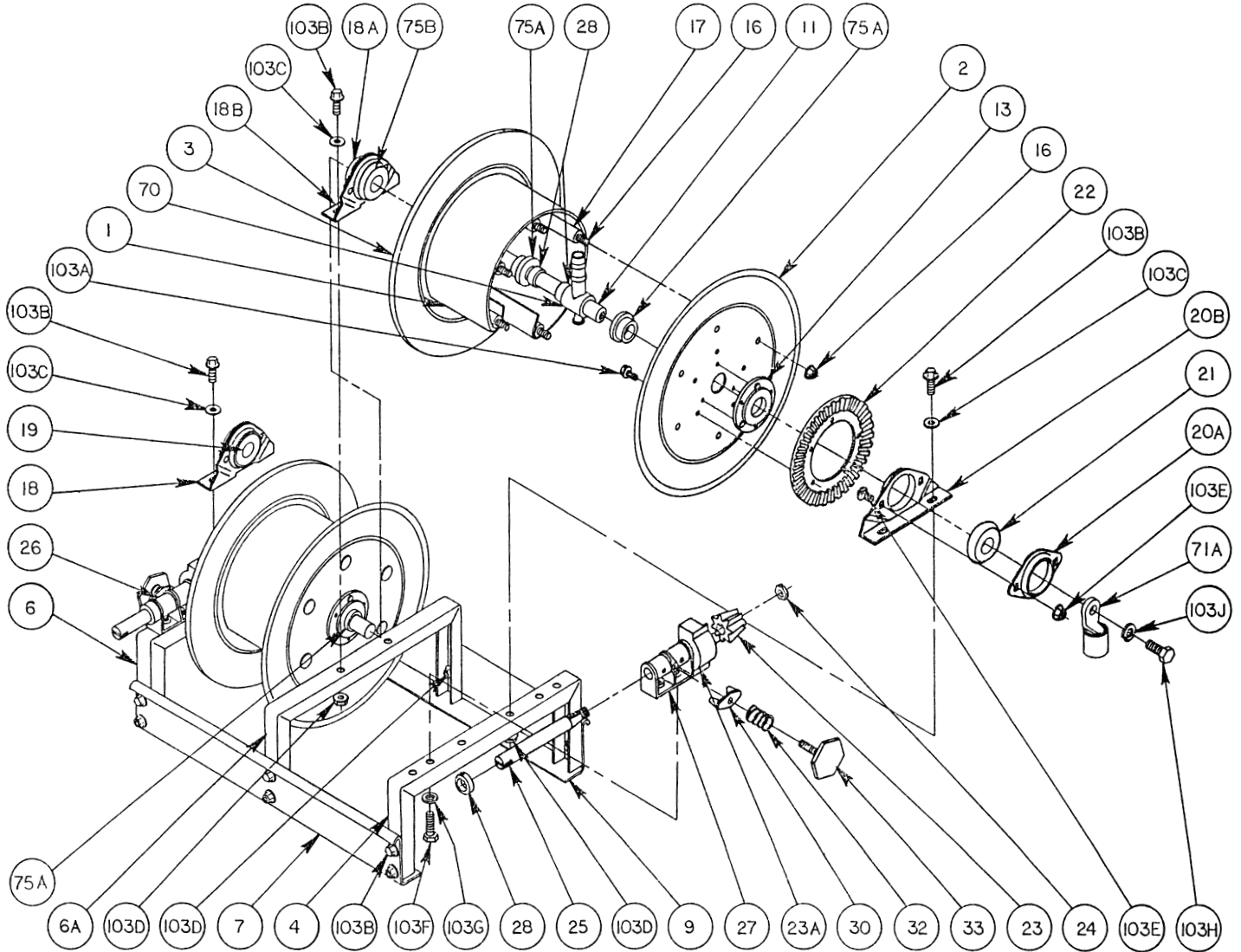


Hannay Reels®

The reel leader.

Hannay Reels, Inc., 553 State Route 143
Westerlo, NY 12193-0159
Telephone 518-797-3791 • Toll Free 1-877-GO-REELS (467-3357)
FAX 1-800-REELING (733-5464)
INT'L FAX (518) 797-3259
Website: www.hannay.com
E-mail: reels@hannay.com

ISO 185 PARTS LIST Series TWCR



PARTS LIST
ISO 185
Series TWCR

When ordering parts

BE SURE TO SPECIFY COMPLETE MODEL NUMBER and SERIAL NUMBER OF REEL.

USE PART NUMBER!

<u>Drawing No.</u>	<u>Description</u>	<u>PART NUMBER</u>	<u>Quantity</u>
1	Drum, 10-1/2" Dia. - Wrap-around(Specify Model)	9905.0138	2
2	Front Disc, 16-1/2" Dia. (17-18).....(Specify Model)	9903.0516	2
2	Front Disc, 18-3/4" Dia. (19-20).....(Specify Model)	9903.0821	2
3	Back Disc, 16-1/2" Dia. (17-18).....(Specify Model)	9903.0516	2
3	Back Disc, 18-3/4" Dia. (19-20).....(Specify Model)	9903.0821	2
4	Front Frame, 1-1/2" Rollform Channel (17-18).....(Specify Model)	9906.0061	1
4	Front Frame, 1-1/2" Rollform Channel (19-20).....(Specify Model)	9906.0081	1
6	Back Frame, 1-1/2" Rollform Channel (17-18).....(Specify Model)	9906.0061	1
6	Back Frame, 1-1/2" Rollform Channel (19-20).....(Specify Model)	9906.0081	1
6A	Center Frame, 1-1/2" Rollform Channel (17-18).....(Specify Model)	9906.0061	1
6A	Center Frame, 1-1/2" Rollform Channel (19-20).....(Specify Model)	9906.0081	1
7	Front Foot, 2" x 4"	Specify Model	1
9	Back Foot, 2" x 4"	Specify Model	1
11	Hub, 1" O.D. Brass, P32A-00090(Specify Model)	9955.0060	2
13	Disc Washer, EH-936	9965.0015	4
16	3/8"-16 Carriage Bolt w/ Nut	Specify Model	12
17	3/8" Spacer Pipe	Specify Model	12
18	1" I.D. Delrin Self-Aligning Complete (Back)	9902.1401	1
18A	Self-Aligning Bearing Holder (Center).....	9902.2800	1
18B	Self-Aligning Bearing Pillowblock (Center).....	9902.2900	1
19	1" I.D. Delrin Bearing Insert Only (Back), P02A-00030.....	9902.1501	1
20A	Self-Aligning Bearing Holder (Front)	9902.2800	1
20B	Self-Aligning Bearing Pillowblock (Front)	9902.2900	1
21	1" I.D. Delrin Bearing Insert Only (Front), P02A-00030	9902.1501	1
22	Ring Gear, H-26	9914.0372	2
23	Pinion Gear, H-27.....	9914.0393	2
23A	Gear Guard	9914.0618	2
24	5/8"-16 SAE Hex Head Nut (ESNA).....	9904.5600	2
25	Pinion Shaft, PS-8.....	9914.0250	2
26	Manual Crank Rewind Assembly Complete.....	9914.0200	1
27	Pinion Shaft Bearing, H-2A.....	9914.0243	2
28	Pinion Shaft Collar w/ Set Screw PSC-1.....	9914.0351	6
30	Brake Pad, H-3.....	9914.0433	2
32	Brake Spring, H-31.....	9914.0451	2
33	Brake Wheel, H-30A.....	9914.0413	2
70	Single Conductor, 400 Amp, Roto-Ground Head.....	9942.0172	2
71A	Offset Connector, #2-OF	9955.0025	2
75A	Insulating Collar - P28A-00160	9955.0198	2
75B	1" I.D. Delrin Bearing Insert Only (Center), P02A-00050.....	9902.1502	1
103A	5/16"-18 x 1/2" Spinlock Bolt.....	9904.2158	10
103B	3/8"-16 x 3/4" Spinlock Bolt.....	9904.2201	18
103C	3/8" Flat Washer	9954.0007	6
103D	3/8"-16 Spinlock Nut.....	9904.6200	18
103E	3/4"-16 x 3/4" Carriage Bolt w/ Nut.....	9904.0201	6
103F	1/2"-13 x 1" Hex Head Bolt	9904.1402	4
103G	1/2" Lock Washer	9954.0030	4
103H	1/2"-13 x 1" Hex Head Bolt (Silicon Bronze).....	9955.0222	2
103J	1/2" Lock Washer (Silicon Bronze).....	9955.0221	2