

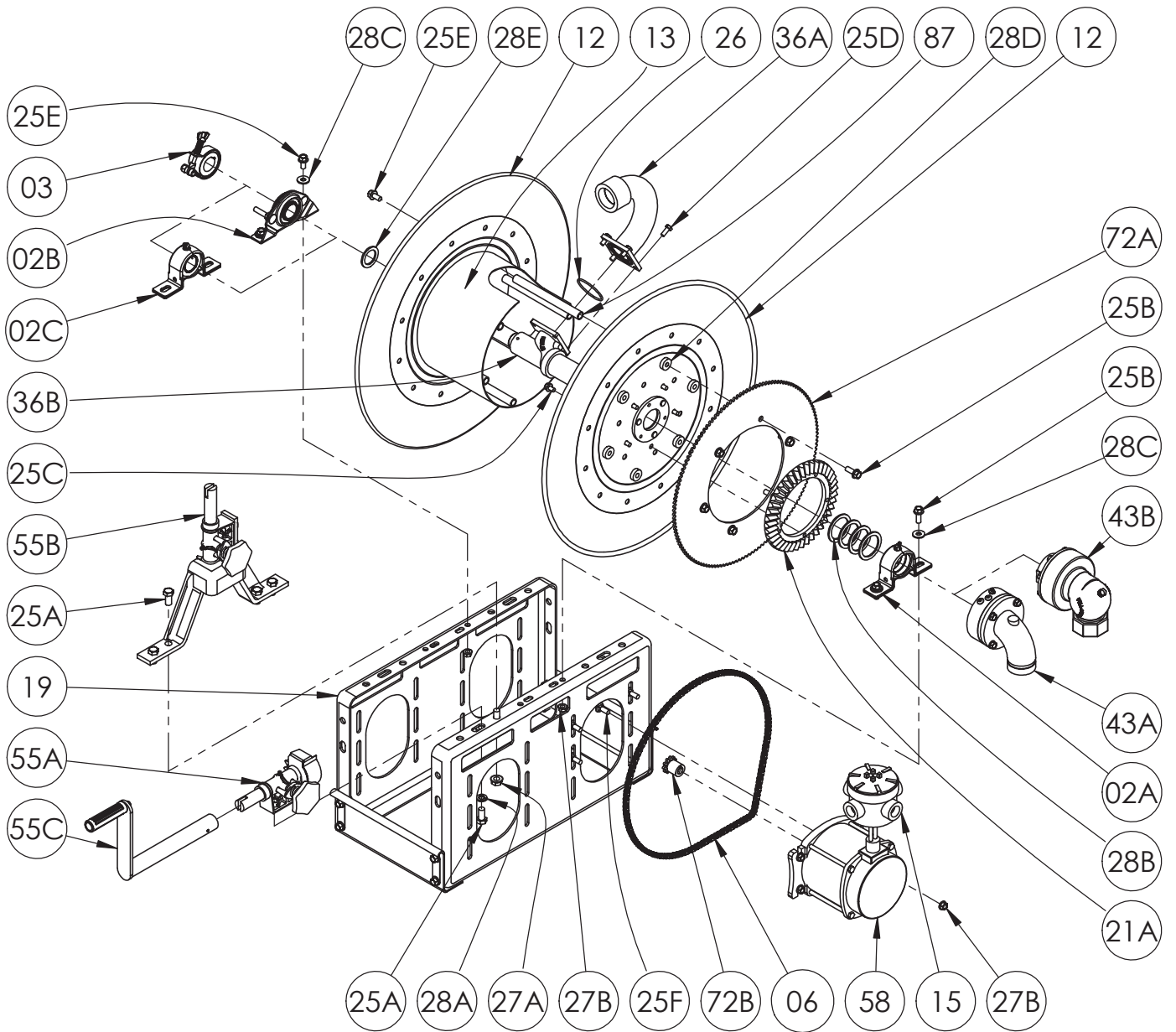


Hannay Reels, Inc.
 553 State Route 143, Westerlo, NY 12193
 www.hannay.com
 Email: reels@hannay.com

Phone 1-518-797-3791
 Toll Free 1-877-GO-REELS (467-3357)
 Fax 1-800-REELING (733-5464)
 Int'l Fax 1-518-797-3259

ISO 18 PARTS LIST

1-1/2" Hose Reel



PARTS LIST
ISO 18
1-1/2" Hose Reel

When Ordering Parts
BE SURE TO SPECIFY COMPLETE MODEL NUMBER and SERIAL NUMBER OF REEL
USE PART NUMBER!

<u>Item No.</u>	<u>Description</u>	<u>Part No.</u>	<u>Qty</u>
02A	1-1/2" Split Strap Bearing Complete (See ISO-211 for Parts)	9902.1612	1
02B	1" Self Aligning Bearing Complete (See ISO-210 for Parts)	9902.1400	1
02C	1" Strap Bearing Complete (See ISO-211 for Parts) (For LPG Reels)	9902.1630	1
03	Comet Brake Assembly (For Self Aligning Bearings) (See ISO-212 for Parts)	9947.0090	1
06	#35 Chain	Specify Model	1
06	#40 Chain (Not Shown)	Specify Model	1
12	Disc Assembly ~Spec Front or Back	Spec Model/Serial #	2
13	10-1/2" Diameter Drum ~Spec Model	9905.3131	1
15	Red Dot Round Junction Box, Cover and 2 Plugs	9917.0061	1
19	Pressed Frame Ass'y	Specify Model	1
21	H-26 Ring Gear	9914.0372	1
21	H-28 Ring Gear (Not Shown)	9914.0382	1
25A	1/2"-13 x 1" Hex Head Bolt	9904.1402	4
25B	3/8"-16 x 1" Spinlock Bolt	9904.2202	8 or 10
25C	5/16"-18 x 1/2" Spinlock Bolt (For H-26 Ring Gear)	9904.2158	5
25D	5/16"-18 x 3/4" Hex Head Cap Screw	9904.1101	4
25E	3/8"-16 x 3/4" Spinlock Bolt	9904.2201	8
25F	3/8"-16 x 1" Carriage Bolt	9904.0200	4
25G	3/8"-16 x 7/8" Button Head Bolt (For 180T35 Sprocket) (Not Shown)	9904.9201	6
26	2-5/8" I.D. O-Ring for 1-1/2" Riser	9965.0028	1
27A	1/2"-13 Spinlock Nut	9954.0036	4
27B	3/8"-16 Spinlock Nut	9904.6200	8
27C	3/8"-16 Hex Head Nut (For 180T35 Sprocket) (Not Shown)	9904.5200	6
28A	1/2" Lock Washer	9954.0030	2
28B	1-1/2" Hub Spacer Washer	9954.0022	4
28C	3/8" Flat Washer	9954.0007	4
28D	Sprocket Spacer (5/16" Thick)	9954.0017	6
28E	1" Hub Spacer Washer (Plastic)	9954.0021	1
30	Woodruff Key #9 (3/16" x 3/4") for Motor and Comet Brake (Not Shown)	9916.0080	2
36A	Riser (Steel) ~Spec Model, Riser Fitting Size & Thread (Includes 26)	9901.3760	1
36A	Riser (Aluminum for Jet Fuel) ~Spec Model, Riser Fitting Size & Thread (Includes 26)	9901.3762	1
36B	1-1/2" Flange Steel Hub ~Spec Model/Serial #	9901.3640	1
38B	1-1/2" Flange Aluminum (For Jet Fuel) Hub ~Spec Model/Serial #	9901.3642	1
43A	1-1/2" 90 Degree FxFxVIC WHJ-1590 JT (BUNA Packing)	9930.4210	1
43A	1-1/2" 90 Degree FxFxVIC WHJ-1590 JT (Viton Packing)	9930.4220	1
43A	1-1/2" 90 Degree FxFxVIC WHJ-1590AL JT (BUNA-N Packing) (For Jet Fuel)	9930.4312	1
43B	1-1/2" 90 Degree FxF Full Circle JT (For LPG Gas)	9930.0531	1
55A	Horizontal Manual Rewind Assembly (H-27 Pinion) (See ISO-209 for Parts)	9914.0200	1
55A	Horizontal Manual Rewind Assembly (H-29 Pinion) (See ISO-209 for Parts) (Not Shown)	9914.0210	1
55B	Vertical Manual Rewind Assembly (H-27 Pinion) (See ISO-209 for Parts)	9914.0223	1
55C	H-18 Crank Handle (10" Length) Complete (See ISO-214 for Parts)	9914.0011	1
58	SX-001 12V DC 1/2 HP Explosion Proof Motor	9915.0003	1
72A	Disc Sprocket ~ Specify Chain Pitch	Specify Model	1
72B	Motor Sprocket ~ Specify Chain Pitch	Specify Model	1
87	Anodized Threaded Spacer Pipe	Specify Model	6