

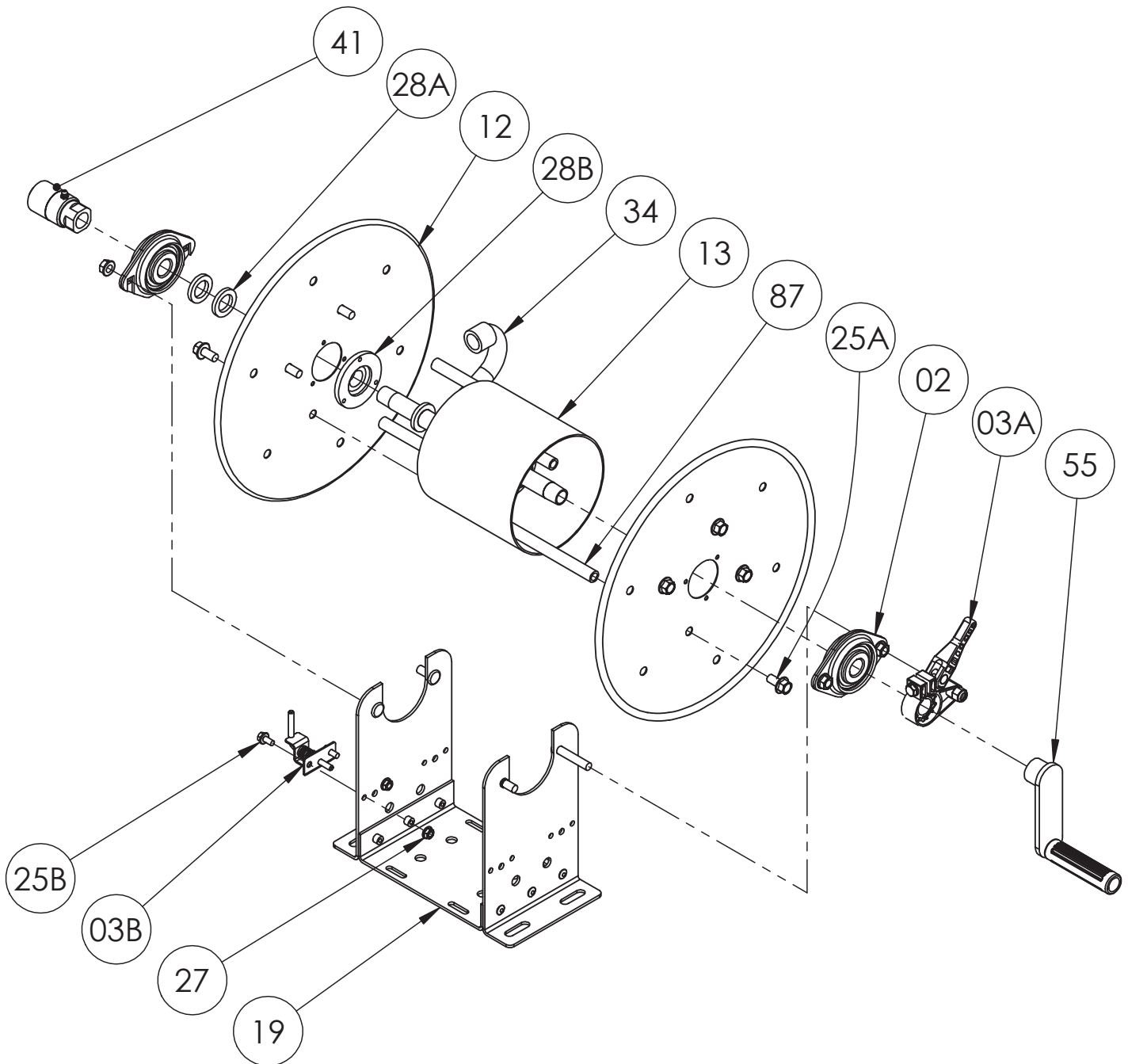


Hannay Reels, Inc.  
553 State Route 143, Westerlo, NY 12193  
www.hannay.com  
Email: reels@hannay.com

Phone 1-518-797-3791  
Toll Free 1-877-GO-REELS (467-3357)  
Fax 1-800-REELING (733-5464)  
Int'l Fax 1-518-797-3259

# ISO 165 PARTS LIST

## SERIES 1000



Hannay ISO Parts Lists are available  
at [www.hannay.com](http://www.hannay.com)

**PARTS LIST  
ISO 165  
SERIES 1000**

**When Ordering Parts  
BE SURE TO SPECIFY COMPLETE MODEL NUMBER and SERIAL NUMBER OF REEL  
USE PART NUMBER!**

| <u>Item No.</u> | <u>Description</u>  | <u>Part No.</u> | <u>Qty</u> |
|-----------------|---|-----------------|------------|
| 02              | 1/2" Self Aligning Bearing complete (See ISO-210 for Parts).....    | 9902.2610       | 2          |
| 03A             | Cam Lock Kit .....  | 9947.0130       | 1          |
| 03B             | 1000 Series Pinlock Assyembly (Including Hardware) .....            | 9965.0230       | 1          |
| 12              | (14-16) 14.25" Diameter Disc (Steel E-Coated) (Specify Model) ..... | 9903.0311       | 2          |
| 13              | 6" Diameter Aluminum Drum (Specify Model) .....                     | 9905.7112       | 1          |
| 19              | Steel Frame Assembly (Specify Model).....                           | 9908.5005       | 1          |
| 25A             | 3/8"-16 x 3/4" Spinlock Bolt .....                                  | 9904.2201       | 8          |
| 25B             | 1/4"-20 x 3/4" Spinlock Bolt .....                                  | 9904.1060       | 2          |
| 27              | 1/4"-20 Spinlock Nut.....   | 9904.6000       | 2          |
| 28A             | 1-3/8" O.D. x 7/8" I.D. x 3/16" Hub Spacer Washer.....              | 9954.0020       | As Needed  |
| 28B             | 1/2" Hub Disc Washer, per P28A-00050 .....                          | 9965.0040       | 2          |
| 34              | 1/2" Welded Steel Hub (Specify Model and Outlet Fitting).....       | 9901.0610       | 1          |
| 41              | 1/2" 90 Degree FxF Super Swivel (Aflas Packing).....                | 9927.8551       | 1          |
| 55              | 1/2" Threaded Crank Handle Assembly (See ISO-255 for Parts).....    | 9914.0020       | 1          |
| 87              | Anodized Aluminum Threaded Spacer Pipe.....                         | Spec Model      | 4          |