



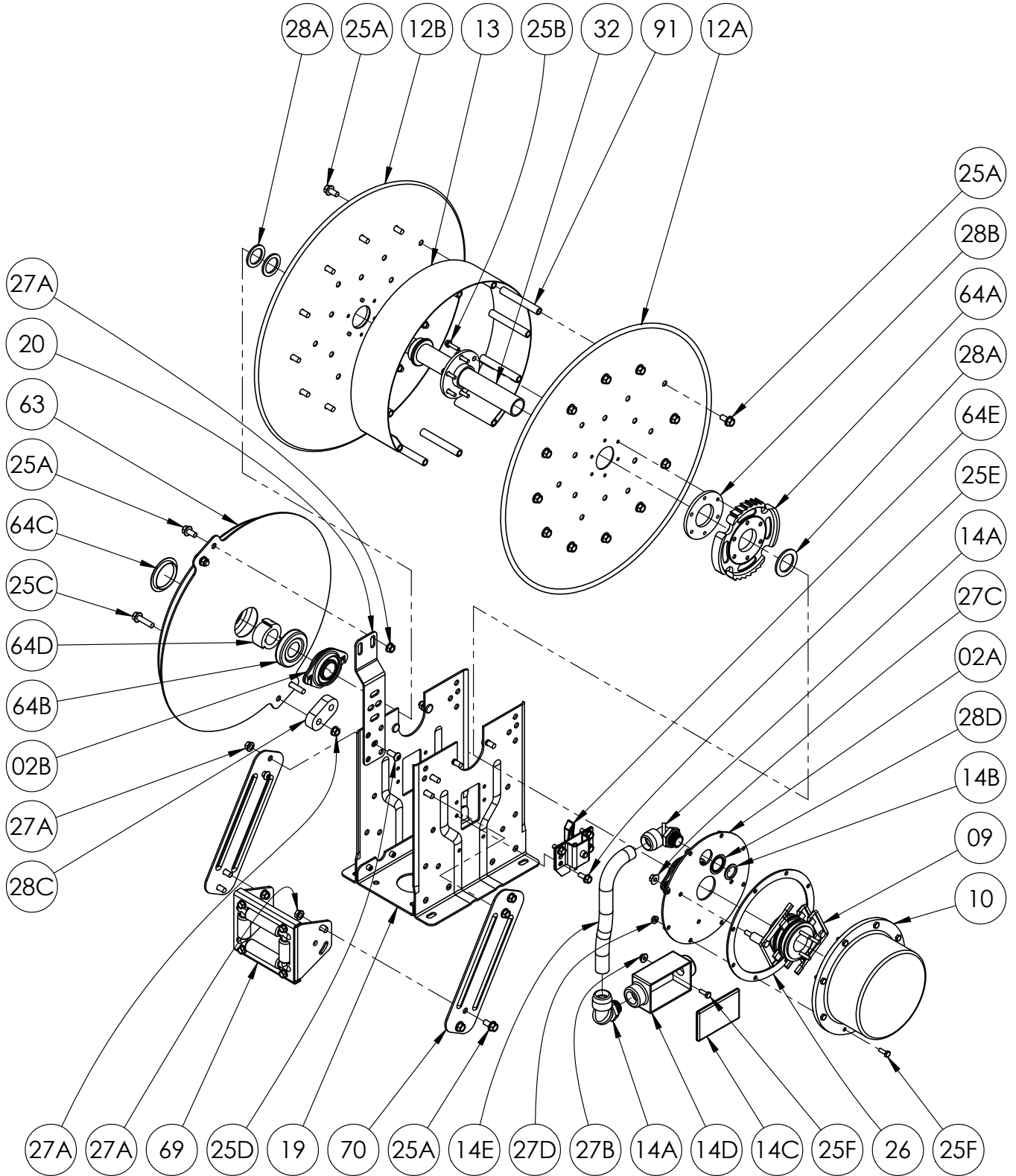
Hannay Reels®
The reel leader.

Hannay Reels, Inc.
553 State Route 143, Westerlo, NY 12193
www.hannay.com
Email: reels@hannay.com

Phone 1-518-797-3791
Toll Free 1-877-GO-REELS (467-3357)
Fax 1-800-REELING (733-5464)
Int'l Fax 1-518-797-3259

ISO 164
PARTS LIST

NSCR SERIES



**PARTS LIST
ISO 164
NSCR Series**

**When Ordering Parts
BE SURE TO SPECIFY COMPLETE MODEL NUMBER and SERIAL NUMBER OF REEL
USE PART NUMBER!**

<u>Item #</u>	<u>Description</u>	<u>Part No.</u>	<u>Qty</u>
02A	1-1/2" Self Aligning Bearing for NSCR w/ Collector Backing Plate Complete (see ISO-259 for parts)	9943.0032	1
02B	1-1/2" Self Aligning Bearing for NSCR Complete (see ISO-210 for parts)	9902.4002	1
09	Collector Assembly Complete.....	Specify Collector	1
10	Collector Cover.....	Specify Collector	1
12A	Front Disc.....	Spec Model/Serial #	1
12B	Back Disc (includes Disc Washer for 23-24 and larger discs).....	Spec Model/Serial #	1
13	Drum, 15-1/2" Dia 18 Gauge 304 SST Wrap-Around (Specify Model).....	9905.0178	1
13	Drum, 10-1/2" Dia 18 Gauge 304 SST Wrap-Around (Specify Model) (not shown).....	9905.0138	1
14A	3/4" Hubbell Swivel-Loc Liquidtight Connector (RACO 4753).....	9955.0009	2
14B	3/4" Locking Nut for Liquidtight Connector.....	9955.0014	1
14C	Red Dot Junction Box Cover w/ Screws.....	9955.0044	1
14D	Red Dot Junction Box.....	Specify Model	1
14E	3/4" Liquidtight Flex Conduit - per foot (Specify Model).....	9955.0114	1
19	N-Series Spring Reel Frame Assembly.....	Specify Model	1
20	N-Series Spring Mounting Bracket, per P20A-00280.....	9922.0050	1
25A	3/8"-16 x 3/4" Spinlock Bolt.....	9904.2201	18 or 30
25B	1/4"-20 x 1" Spinlock Bolt (for Anti-Rotation Collar).....	9904.2002	6
25C	3/8"-16 x 1-1/2" Spinlock Bolt.....	9904.2204	2
25D	3/8"-16 x 7/8" Button Socket Head Cap Screw.....	9904.9201	4
25E	5/16"-18 x 3/4" Thread Cutting Hex Head Bolt (for Ratchet Locking Assembly).....	9958.0055	4
25F	1/4"-20 x 3/4" Hex Head Cap Screw.....	9904.1001	10
26	Collector Cover Gasket.....	9943.0004	1
27A	3/8"-16 Spinlock Nut.....	9904.6200	12
27B	1/4"-20 Large Flange Spinlock Nut.....	9904.6002	2
27C	5/16"-18 Large Flange Spinlock Nut.....	9904.6100	2
27D	1/4"-20 Small Flange Spinlock Nut (Armor Coat).....	9904.6000	8
28A	Cable Hub Spacer Washer (1-1/2" ID x 10 GA).....	9954.0025	As Req'd.
28B	EH-936 Disc Washer (E-Coated).....	9965.0015	1
28C	Oval Spring Spacer, per P28A-00020 (for "A", "B" and "G" Springs).....	9922.0032	1
28D	Reducing Washer for 3/4" Liquidtight Connector (1-5/8" OD x 1-3/32" ID).....	9955.0013	1
28E	Spring Spacer, per P28A-00070 (for "C" and "J" Springs) (not shown).....	9922.0033	1
29	Woodruff Key #9 (3/16" x 3/4") for Spring Arbor (not shown).....	9916.0080	1
32	Hub for NSCR700, per P32A-00080 (Specify Model/Serial #).....	9955.0066	1
63	"B" Spring (w/ Arbor).....	9921.0015	1
63	"A" Spring (w/ Arbor) (not shown).....	9921.0010	1
63	"G" Spring (w/ Arbor) (not shown).....	9921.0021	1
63	"J" Spring (w/ Arbor) (not shown).....	9921.0030	1
63	"C" Spring (w/ Arbor) (not shown).....	9921.0018	1
64A	Ratchet Wheel (2 Position) 180 Deg w/ Hardware, per P64A-00120 (includes Item 25B).....	9922.0015	1
64B	Cap-Plug for Spring (STP-3) Inner Side.....	9922.0036	1
64C	Low Temp Cap-Plug for Spring (BP-2-1/2) Outer Side.....	9922.0037	1
64D	Spring Arbor, per P64A-00282 for "B", "G", "J" or "C" Springs.....	9922.0082	1
64D	Spring Arbor, per P64A-00281 for "SA", "A", "D" Springs (not shown).....	9922.0081	1
64E	Right Hand Ratchet Locking Assembly Complete (see ISO-207 for parts).....	9922.0312	1
64E	Left Hand Ratchet Locking Assembly Complete (for Reverse Springs ONLY) (see ISO-207 for parts).....	9922.0311	1
69	N204 Complete Roller Assembly for Model NSCR716 (see ISO-208 for parts).....	9939.0111	1
69	N203 Complete Roller Assembly for Model NSCR715 (see ISO-208 for parts) (not shown).....	9939.0110	1
70	N-Series Single Roller Arm, per P70A-03020 (Specify Model).....	9941.0030	2
91	4" Long Anodized Threaded Spacer Pipe (Specify Model).....	9904.0308	6 or 12
91	3" Long Anodized Threaded Spacer Pipe (Specify Model) (not shown).....	9904.0306	6 or 12