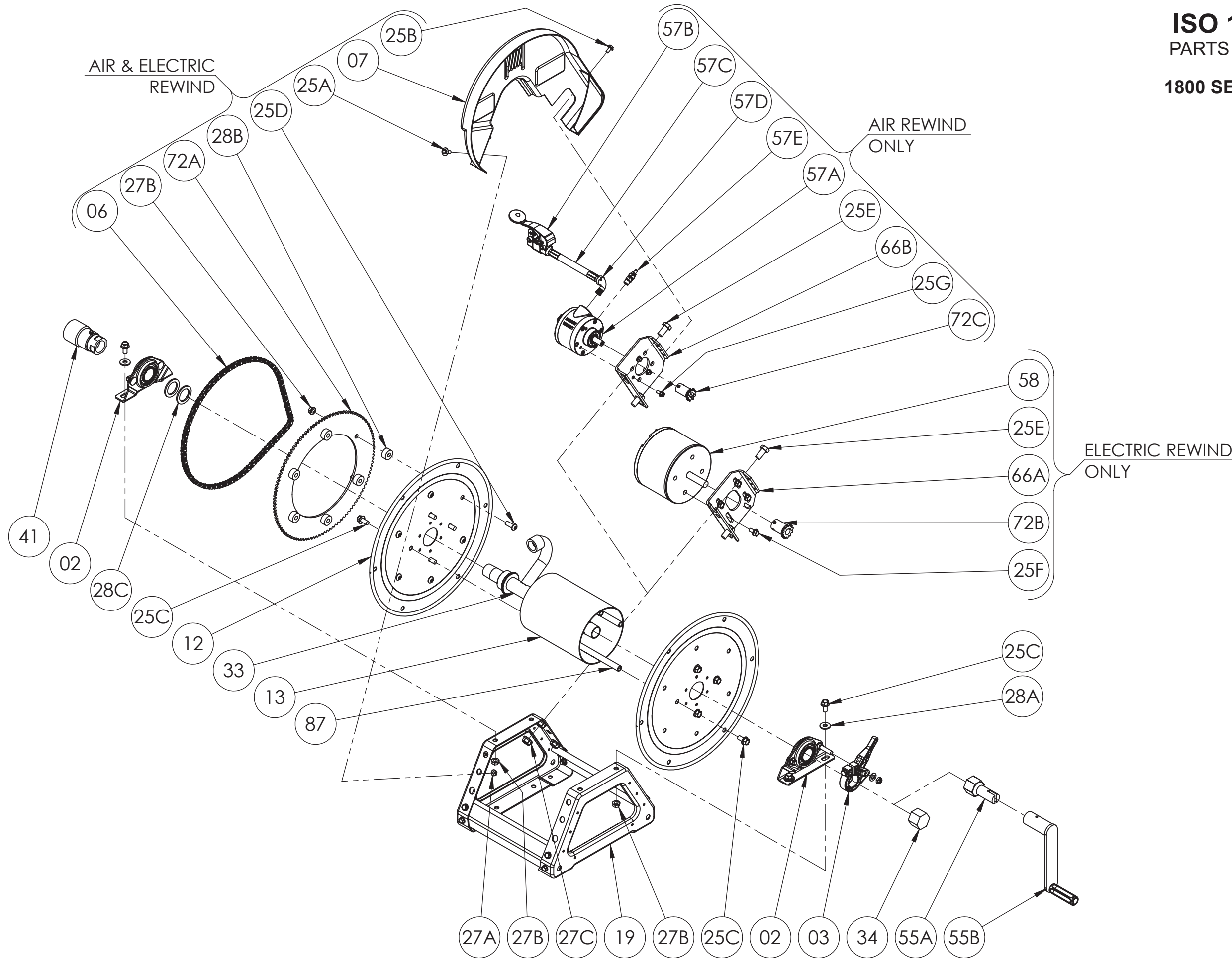


ISO 136
PARTS LIST
1800 SERIES





Hannay Reels, Inc.
553 State Route 143, Westerlo, NY 12193
www.hannay.com
Email: reels@hannay.com

Phone 1-518-797-3791
Toll Free 1-877-GO-REELS (467-3357)
Fax 1-800-REELING (733-5464)
Int'l Fax 1-518-797-3259

ISO 136
PARTS LIST
1800 SERIES

PARTS LIST
ISO 136
1800 SERIES

When Ordering Parts
BE SURE TO SPECIFY COMPLETE MODEL NUMBER and SERIAL NUMBER OF REEL
USE PART NUMBER!

When Ordering Parts
BE SURE TO SPECIFY COMPLETE MODEL NUMBER and SERIAL NUMBER OF REEL
USE PART NUMBER!

Item No.	Description	Part No.	Quantity
02	1" Self Aligning Bearing Complete (See ISO-210 for Parts).....	9902.1400	2
03	Cam Lock Drag Brake Complete (See ISO-254 for Parts)	9947.0140	1
06	#35 Chain	9912.0028	1
07	Molded Chain Guard for Motor on Right, per P07A-00200 (Not Shown).....	9957.0031	1
07	Molded Chain Guard for Motor on Left, per P07A-00190	9957.0030	1
12	(17-18) 16-1/2" Dia. Disc for 1800 Series (Steel E-Coated).....	9903.0516	2
13	Drum, 6" Alum. Tubing (Specify Model).....	9905.7112	1
19	Trapezoid Frame (Steel E-Coated).....	9908.1000	1
25A	1/4"-20 x 3/4" Spinlock Bolt.....	9904.1071	2
25B	1/4"-20 x 1/2" Self Tapping Screw	9904.1070	2
25C	3/8"-16 x 3/4" Spinlock Bolt.....	9904.2201	12
25D	3/8"-16 x 1 Button Head Cap Screw.....	9904.9202	6
25E	1/2"-13 x 1 Hex Head Cap Screw.....	9904.1402	2
27A	1/4"-20 Spinlock Nut	9904.6000	2
27B	3/8"-16 Spinlock Nut	9904.6200	10
27C	1/2"-13 Spinlock Nut	9954.0036	2
28A	3/8" Flat Washer.....	9954.0007	4
28B	Sprocket Spacer (1" O.D. x 0.381" I.D. x 1/2" Thick)	9954.0015	6
28C	1" Pipe Hub Spacer (1-7/8" O.D. x 1-5/16" I.D. x 1/8" Thick).....	9954.0021	As Req'd
33	1" Welded Pipe Hub Assy	9901.2000	1
34	1" Pipe Cap	9965.0014	1
41	1" 90 Degree FxF Super Swivel	9929.8552	1
72A	11T35 Disc Sprocket 13-3/8 Dia.....	9910.1321	1
87	Anodized Aluminum Threaded Spacer Pipe.....	Spec Model	4

ELECTRIC REWIND

25F	5/16"-18 X 5/8" Spinlock Bolt (For Electric Motor).....	9904.2159	4
58	AN-227 12V DC Face Mount 1/3 HP 650 RPM Motor	9915.0042	1
58	AN-239 12V DC Face Mount 1/5 HP 420 RPM Motor (Optional).....	9915.0040	1
58	AN-250 12V DC Face Mount 1/12 HP 220 RPM Motor (Optional).....	9915.0044	1
66A	Electric Motor Mounting Plate for Trapezoid Frame w/ 25F (Steel E-Coated).....	9923.0006	1
72B	11T35 Spkt. 1-3/4" LG.....	9910.1119	1

Item No.	Description	Part No.	Quantity
<u>AIR REWIND</u>			
25G	1/4"-20 x 1/2" Spinlock Bolt.....	9904.1058	3
57A	#4 AM Gast Air Motor (4 AM NRV-143) w/ Speed Control Muffler (57E).....	9918.1122	1
57B	#3420 Schrader Valve for #4 AM Air Motor	9919.0004	1
57C	1/4" MxM NPT x 18" Long Air Hose.....	9919.0007	1
57D	1/4" MxF 90 Degree Street Elbow for #4 AM Air Motor	9950.0013	1
57E	1/4" MNPT Speed Control Muffler for #4 AM Air Motor	9919.0006	1
66B	Air Motor Mounting Plate for Trapezoid Frame w/ 25G (Steel E-Coated)	9923.0013	1
72C	9T35 x 1-3/4" Motor Sprocket for Air Motor	9910.1015	1

OPTIONAL REMOVABLE REWIND CRANK

55A	1" Hand Crank Adapter.....	9914.0054	1
55B	Removable Hand Crank Complete (See ISO-214 for Parts).....	9914.0012	1