

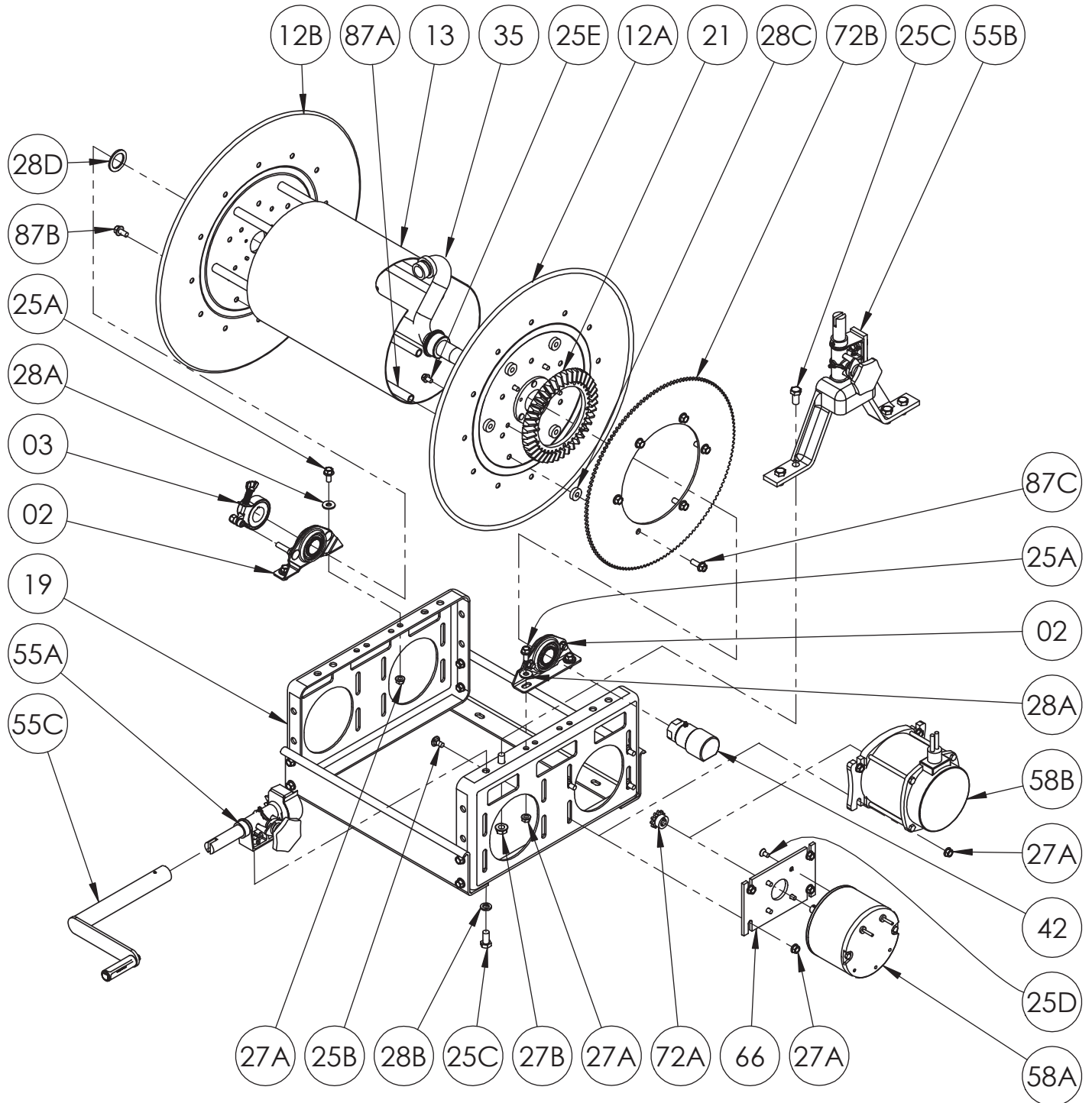


Hannay Reels, Inc.
 553 State Route 143, Westerlo, NY 12193
 www.hannay.com
 Email: reels@hannay.com

Phone 1-518-797-3791
 Toll Free 1-877-GO-REELS (467-3357)
 Fax 1-800-REELING (733-5464)
 Int'l Fax 1-518-797-3259

ISO 122 PARTS LIST

1" Hose Reel, Aluminum



Hannay ISO Parts Lists are available
 at www.hannay.com

PARTS LIST
ISO 122
1" Hose Reel, Aluminum

When Ordering Parts
BE SURE TO SPECIFY COMPLETE MODEL NUMBER and SERIAL NUMBER OF REEL
USE PART NUMBER!

<u>Item No.</u>	<u>Description</u>	<u>UnPolished</u>	<u>Polished</u>	<u>Qty</u>
02	1" Self Aligning (Stainless Steel) Bearing Ass'y (See ISO-210 for Parts).....	9902.1405	9902.1405	2
03	Strap Brake Assembly for Self Aligning Bearing (See ISO-212 for Parts).....	9947.0090	9947.0090	1
06	#35 Chain (Not Shown).....	Spec Model	Spec Model	1
12A	Aluminum Disc w/ Ring Gear Holes.....	Specify Model/ Serial Number		1
12B	Aluminum Disc w/o Ring Gear Holes.....	Specify Model/ Serial Number		1
13	10-1/2" Dia. Unpolished Aluminum Drum (Specify Model, up to 29.5" B).....	9905.5132	9905.5132	1
19	Small Aluminum Pressed Frame Assembly (19-20 or 23-24) (Specify Model).....	9908.2300	9908.2400	1
19	Large Aluminum Pressed Frame Assembly (25-26 or 30-31) (Specify Model).....	9908.3300	9908.3400	1
21	H26 Ring Gear.....	9914.0372	9914.0372	1
25A	3/8"-16 x 3/4" Long Spinlock Bolt.....	9904.2201	9904.2201	4
25B	3/8"-16 x 1" Long Carriage Bolt W/ Nut.....	9904.0200	9904.0200	4
25C	1/2"-13 x 1" Long Hex Head Bolt.....	9904.1402	9904.1402	2 or 4
25D	5/16"-18 x 5/8" Long Hex Flat Head Socket Screw (For Non EP Motor).....	9958.0027	9958.0027	4
25E	5/16"-18 x 1/2" Long Spinlock Bolt.....	9904.2158	9904.2158	5
25F	3/8"-16 x 7/8" Button Head Cap Screw (Not Shown) (For 180T35 Spkt Only).....	9904.9201	9904.9201	6
27A	3/8"-16 Spinlock Nut.....	9904.6200	9904.6200	8
27B	1/2"-13 Spinlock Nut (For Vertical Rewind).....	9904.5400	9904.5400	4
27C	3/8"-16 Heavy Hex Jam Nut (For 180T35 Spkt Only) (Not Shown).....	9965.0012	9965.0012	6
28A	3/8" Flat Washer.....	9954.0007	9954.0007	4
28B	1/2" Lock Washer.....	9954.0030	9954.0030	2
28C	Sprocket Spacer, 1" O.D. x 3/8" I.D. x 5/16" Thick.....	9954.0017	9954.0017	6
28D	1" Hub Spacer Washer.....	9954.0021	9954.0021	3
35	1" Iron Pipe Hub Assembly (Plated) Specify model/Serial Number and fitting.....	9901.2307	9901.2307	1
42	1" FxF 90 Degree Steel 5000 PSI Super Swivel Joint (Viton).....	9929.8552	9929.8552	1
55A	Horizontal Rewind Assembly Complete (See ISO-209 for Parts).....	9914.0200	9914.0200	1
55B	VR-2 Vertical Rewind Assembly Complete (See ISO-209 for Parts).....	9914.0223	9914.0223	1
55C	H-18 Crank Handle (See ISO-214 for Parts).....	9914.0011	9914.0011	1
58A	AN-227 12V DC Non E.P. Face Mount 1/3 HP 650 RPM Motor.....	9915.0042	9915.0042	1
58A	AN-248 24V DC Non E.P.Face Mount 1/3 HP 650 RPM Motor (Optional).....	9915.0173	9915.0173	1
58B	SX-001 12V DC E.P. Flange Mount 1/2 HP 650 RPM Motor.....	9915.0003	9915.0003	1
58B	SX-123 24V DC E.P. Flange/Base Mount 1/2 HP 650 RPM Motor (Optional).....	9915.0113	9915.0113	1
66	Motor Mounting Plate for Non-EP Motors w/ Bolts (Item 25E).....	9923.0008	9923.0008	1
72A	11T35 x 1-5/16" Long Plated (For E.P. Motors).....	9910.1118	9910.1118	1
72A	11T35 x 1-3/4" Long Plated (For Non E.P. Motors).....	9910.1119	9910.1119	1
72B	112T35 Disc Sprocket (13-3/8" Dia.) (Chrome Silver) for 19-20 Discs.....	9910.1323	9910.1323	1
72B	138T35 Disc Sprocket (16-5/8" Dia.) (Chrome Silver) for 23-24 and 25-26 Discs....	9910.1447	9910.1447	1
72B	180T35 Disc Sprocket (21-3/84" Dia.) (Chrome Silver) for 30-31 Discs.....	9910.1527	9910.1527	1
87A	Anodized Threaded Spacer Pipe.....	Spec Model	Spec Model	6
87B	3/8"-16 x 3/4" Spinlock Bolt (For Use with Anodized Threaded Spacer Pipe).....	9904.2201	9904.2201	6
87C	3/8"-16 x 1" Spinlock Bolt (For Use with Anodized Threaded Spacer Pipe).....	9904.2202	9904.2202	6