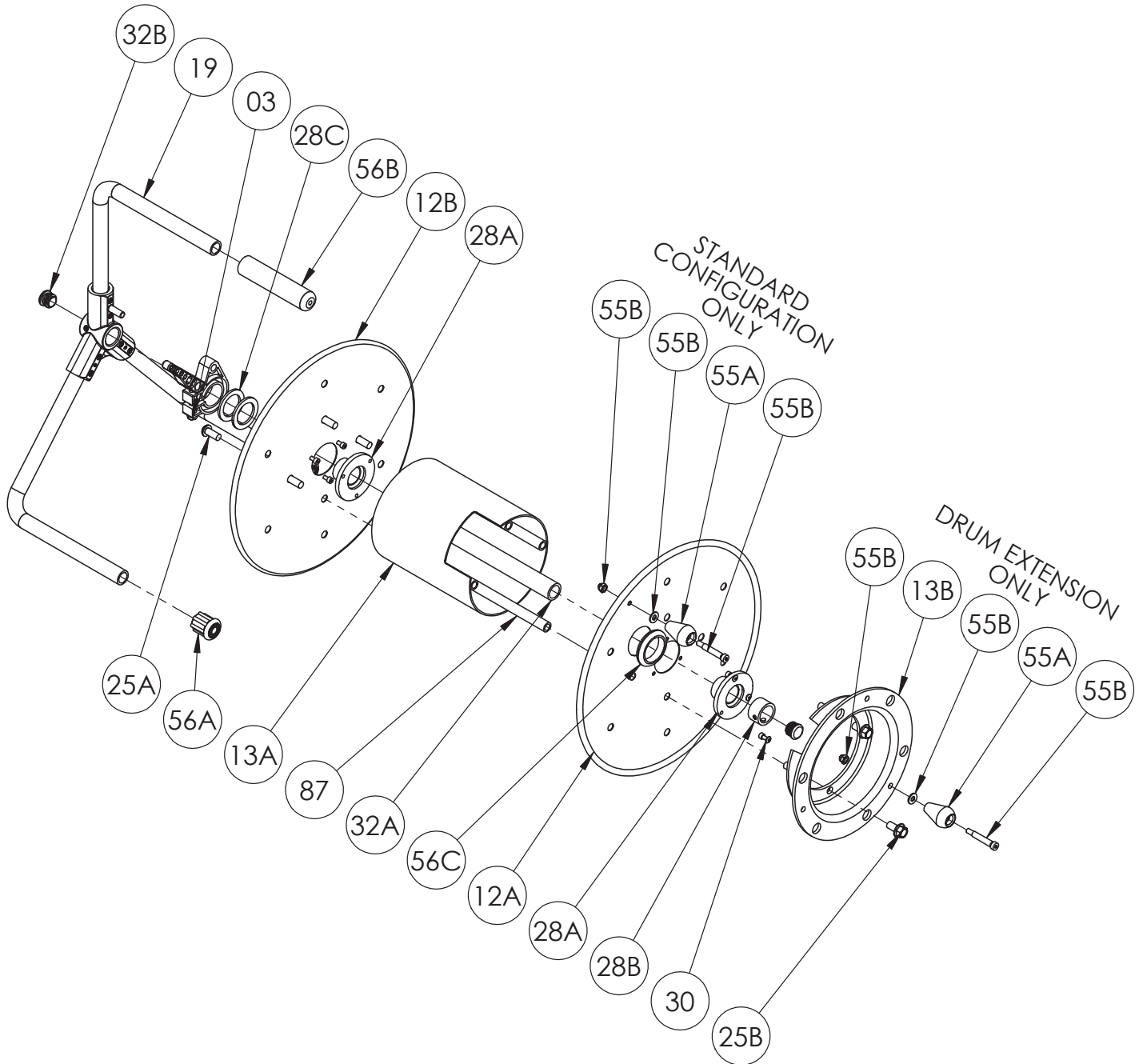


ISO 121
PARTS LIST

C16-14-16, AVC16-14-16
C20-14-16, AVC20-14-16
(includes -DE models)



**PARTS LIST
ISO 121**

C16-14-16, AVC16-14-16, C20-14-16, AVC20-14-16 (includes -DE models)

**When Ordering Parts
BE SURE TO SPECIFY COMPLETE MODEL NUMBER and SERIAL NUMBER OF REEL
USE PART NUMBER!**

<u>Item No.</u>	<u>Description</u>	<u>Part No.</u>	<u>Quantity</u>
03	Cam Lock Drag Brake (See ISO-254 for Parts)	9947.0140	1
12A	14-16 Disc (w/ Access Hole), per P12A-00330	9903.0311	1
12B	14-16 Disc (w/o Access Hole), per P12A-00310	9903.0311	1
13A	6" Dia. Drum, 12" Length (C20-14-16), per P13A-00360	9905.7112	1
13A	6" Dia. Drum, 7-1/2" Length (C16-14-16), per P13A-00360 (not shown)	9905.7112	1
13B	6-5/8" Cable Storage Drum, per P13A-00300 (DE Models Only).....	9949.0302	1
19	Frame Assembly (See ISO-260 for Parts)	Specify Model	1
25A	3/8"-16 x 7/8" Button Socket Head Cap Screw	9904.9201	4
25B	3/8"-16 x 3/4" Spinlock Bolt	9904.2201	4
28A	AV Disc Washer, per P28A-00930.....	9949.0210	2
28B	AV Shaft Collar, (w/ 2 Set Screws), per P28A-00790	9955.0250	1
28C	1-7/8" OD x 1-5/16" ID x 1/8" thick washer.....	9954.0021	2
30	3/16" x 3/8" SST Blind Pop Rivets	9949.0212	6
32A	Hub for C20-14-16, per P32A-00380.....	9955.0064	1
32A	Hub for C16-14-16, per P32A-00390 (not shown).....	9955.0063	1
32B	End Cap (CCF-7/8).....	9958.0062	2
55A	Manual Rewind Knob Handle	9914.0565	1
55B	5/16"-20 Shoulder Bolt (w/ Nut and washers)	9914.0531	1
56A	Rubber Crutch Tip	9965.0058	2
56B	Rubber Hand Grip	9965.0057	1
56C	Rubber Grommet (1-3/4" Dia.)	9955.0030	1
87	12" Long Anodized Threaded Spacer Tube for C20-14-16	9904.0324	4
87	7-1/2" Long Anodized Threaded Spacer Tube for C16-14-16 (not shown)	9904.0315	4