

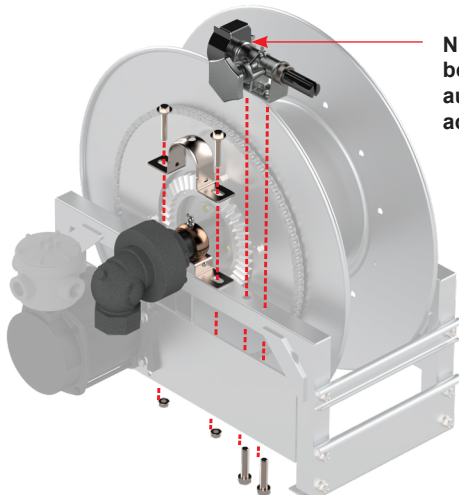
**NOTE: REFER TO TSB 2019.05.002 & ISO 211 FOR ADDITIONAL INFORMATION ON COMPONENT IDENTIFICATION AND BEARING PARTS.**

**Parts Required:** 9902:1710 Split Bearing Insert Kit (w/ 45° grease zerk)

**Tools Required:** (2) Large Flat Head Screwdrivers  
(1) Ratchet w/ 9/16" Socket (for bearing hardware) & 3/4" Socket (for aux rewind, if equipped)  
(1) 3/8" Open or Box End Wrench (if needed)

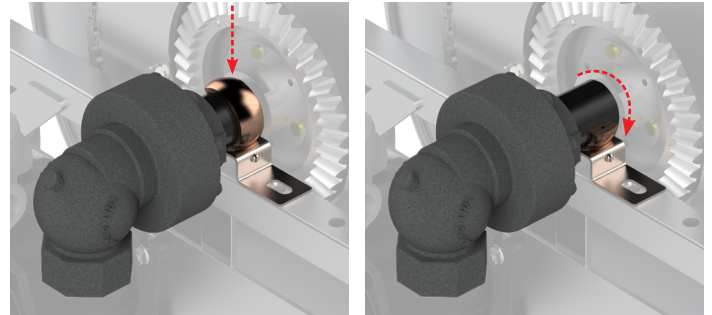
**Actions Required:**

1. Remove mounting hardware holding bearing down and pry bearing top strap off using two flat head screwdrivers, the top half of the bearing should come off as well. Then separate the top half of the bearing from the strap.

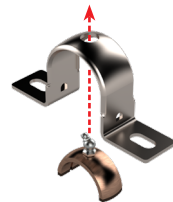


**NOTE:** If equipped it may be necessary to remove auxiliary rewind for access to bearing

3. Place split bearing bottom half on hub and rotate as shown in images, so bearing rests under the hub.



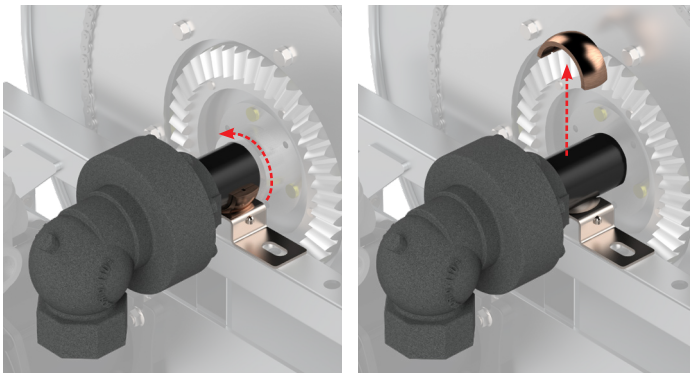
4. Install bearing top half into top strap.



**NOTE:** Careful not to detach spacers from bearing.



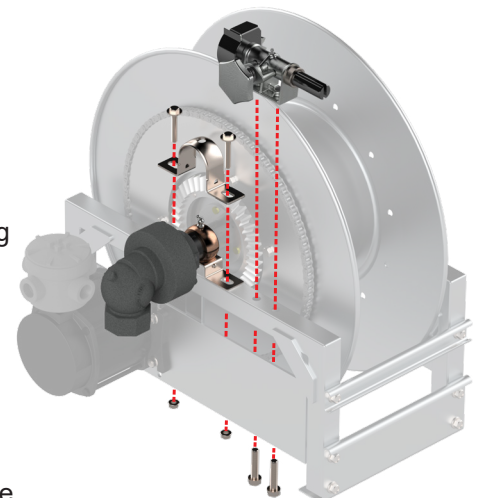
2. Lift joint side of reel and remove bottom half of bearing by spinning out from under hub and removing



**Note :** It may be necessary to loosen chain to lift spool.

5. Snap bearing strap, with bearing top half, over hub onto bottom bearing and replace mounting hardware.

If originally equipped, reinstall auxiliary rewind.



6. Be sure to grease bearing