

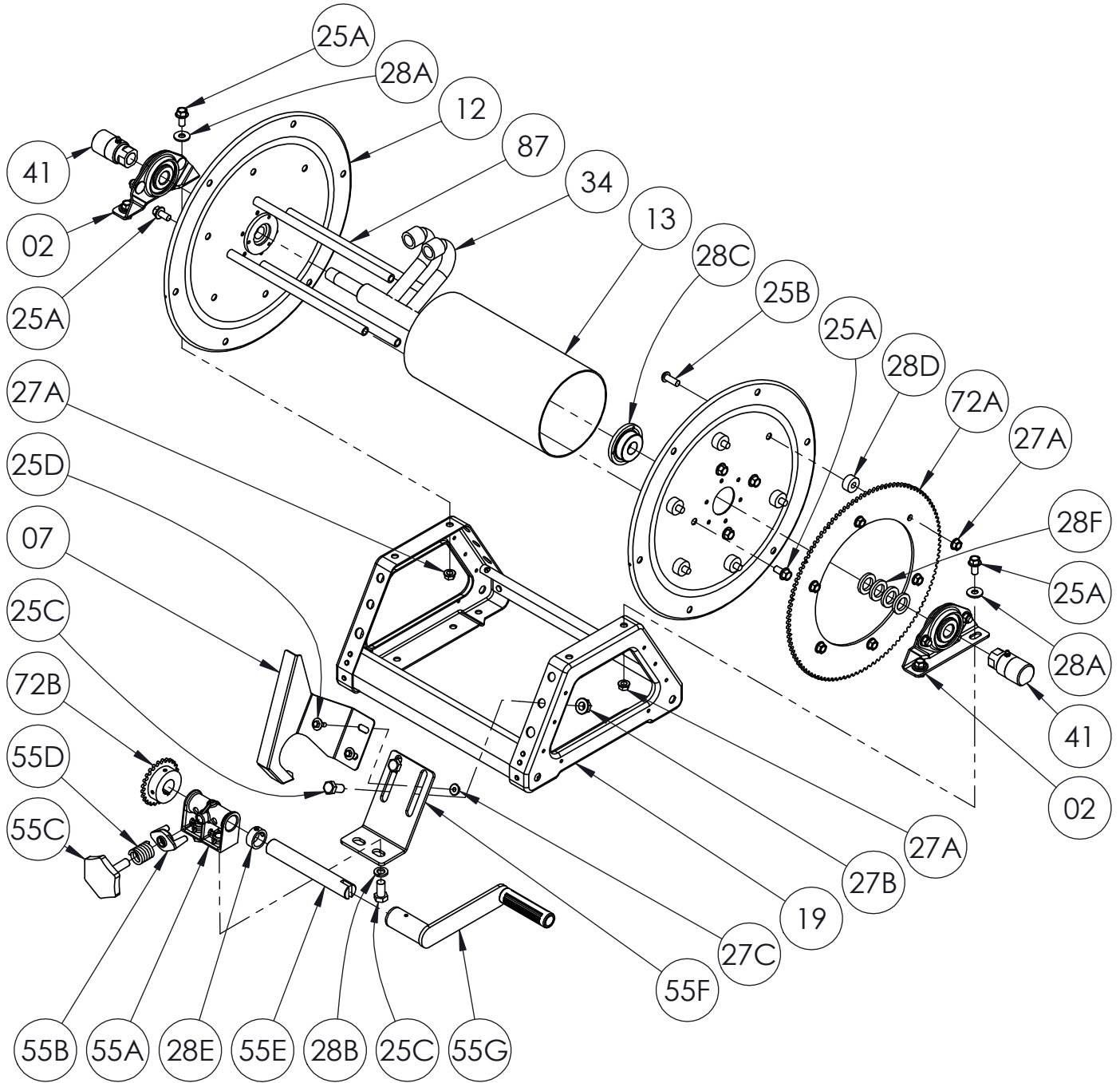


Hannay Reels®
The reel leader.

Hannay Reels, Inc.
553 State Route 143, Westerlo, NY 12193
www.hannay.com
Email: reels@hannay.com

Phone 1-518-797-3791
Toll Free 1-877-GO-REELS (467-3357)
Fax 1-800-REELING (733-5464)
Int'l Fax 1-518-797-3259

ISO 99
PARTS LIST
MX 2000 SERIES



**PARTS LIST
ISO 99
MX2000 Series**

**When Ordering Parts
BE SURE TO SPECIFY COMPLETE MODEL NUMBER and SERIAL NUMBER OF REEL
USE PART NUMBER!**

<u>Item #</u>	<u>Description</u>	<u>Part No.</u>	<u>Qty</u>
02	1/2" Pipe-Size (0.826" I.D.) Self Aligning Bearing Complete (see ISO-210 for parts)	9902.1200	2
06	#35 Chain (not shown)	9912.0003	1
07	Chainguard for MX2000, per P07A-00290 (Specify Right or Left)	9957.0034	1
12	(17-18) 16.5" Dia. Disc 14 GA Steel	9903.0516	2
13	Drum, 6" Dia. Aluminum Pipe (Specify Model)	9905.7112	1
19	Trapezoid Frame Assembly - E-Coated (Specify Model)	9908.1000	1
25A	3/8"-16 x 3/4" Spinlock Bolt	9904.2201	12
25B	3/8"-16 x 1" Button Socket Head Cap Screw (for Sprocket Mounting).....	9904.9202	6
25C	1/2"-13 x 1" Hex Head Bolt (for MX Rewind Mounting).....	9904.1402	4
25D	1/4"-20 x 3/4" Hex Washer Head Black Zinc Screw (for Chainguard).....	9904.1071	2
27A	3/8"-16 Spinlock Nut.....	9904.6200	10
27B	1/2"-13 Hex Spinlock Nut	9904.5400	2
27C	1/4"-20 Large Flange Spinlock Nut.....	9904.6002	2
28A	3/8" Flat Washer	9954.0007	4
28B	1/2" Split Lock Washer (Armor Coat).....	9954.0030	2
28C	Disc Washer for 1500, per P28A-01160	9965.0040	2
28D	Sprocket Spacer Washer (1" O.D. x 0.381" I.D. x 1/2" Thick), per P28A-00760	9954.0015	6
28E	PSC-1 Pinion Shaft Collar w/ Set Screw	9914.0351	1
28F	1/2" Hub Spacer Washer - Plated (1-3/8" O.D. x 7/8" I.D. x 3/16" Thick).....	9954.0020	As Req'd.
34	1/2" Dual Welded Steel Pipe Hub (Specify Model).....	9901.0670	1
41	1/2" 90 Degree FxF Steel 5000 PSI Full Flow Super Swivel Joint (GLT VITON) Zerk Fitting (HR 41-0006).....	9927.8555	2
55A	H-2A Pinion Shaft Bearing.....	9914.0243	1
55B	H-3 Brake Pad	9914.0433	1
55C	H-30A Brake Wheel (Zinc Alloy)	9914.0413	1
55D	Coil (H-31 Brake) Spring	9914.0451	1
55E	MX Rewind Shaft.....	9914.0711	1
55F	MX Rewind Assembly Mounting Plate for Trapezoid Frame	9914.0722	1
55G	H-18 Steel Hand Crank - E-Coated (3" Length) (see ISO-214 for parts)	9914.0012	1
72A	112T35 Disc Sprocket - 13-3/8" Dia. (E-Coated).....	9910.1321	1
72B	Reduction Unit Sprocket - 25T35 w/ 1" Bore.....	9948.0096	1
87	Anodized Aluminum Threaded Spacer Pipe.....	Specify Model	4