



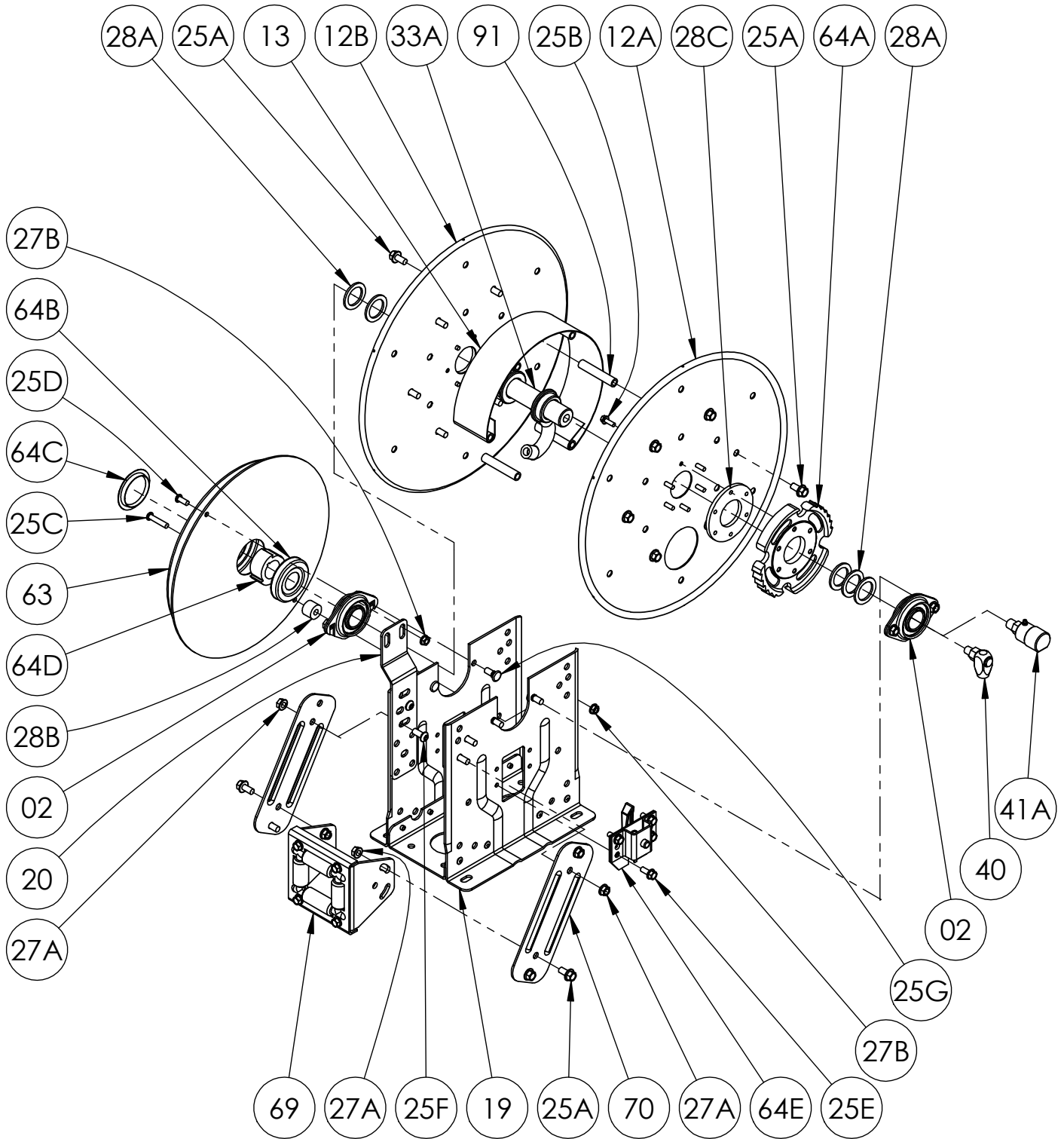
Hannay Reels®
The reel leader.

Hannay Reels, Inc.
553 State Route 143, Westerlo, NY 12193
www.hannay.com
Email: reels@hannay.com

Phone 1-518-797-3791
Toll Free 1-877-GO-REELS (467-3357)
Fax 1-800-REELING (733-5464)
Int'l Fax 1-518-797-3259

ISO 92
PARTS LIST

N500 SERIES



**PARTS LIST
ISO 92
N500 SERIES**

When Ordering Parts
BE SURE TO SPECIFY COMPLETE MODEL NUMBER and SERIAL NUMBER OF REEL
USE PART NUMBER!

<u>Item #.</u>	<u>Description</u>	<u>Part No.</u>	<u>Qty</u>
02	1" Pipe-Size Self Aligning Bearing for N-Series Complete (see ISO-210 for parts)	9902.2600	2
12A	Front Disc	Spec Model/Serial #	1
12B	Back Disc (includes Disc Washer for 23-24 and larger discs).....	Spec Model/Serial #	1
13	Drum, 10-1/2" Dia 18 Gauge 304 SST Wrap-Around (Specify Model).....	9905.0138	1
13	Drum, 15-1/2" Dia 18 Gauge 304 SST Wrap-Around (Specify Model) (not shown).....	9905.0178	1
13	Drum, 8" Dia 18 Gauge 304 SST Wrap-Around (Specify Model) (not shown)	9905.0128	1
19	N-Series Spring Reel Frame Assembly	Specify Model	1
20	N-Series Spring Mounting Bracket, per P20A-00280 (for "B" and "J" Spring).....	9922.0050	1
25A	3/8"-16 x 3/4" Spinlock Bolt	9904.2201	As Req'd.
25B	1/4"-20 x 3/4" Hex Head Spinlock Cap Screw (for Ratchet Wheel).....	9904.1060	6
25C	5/16"-18 x 1-1/2" Hex Socket Button Head Cap Screw (for "J", "C" & "L" Springs)	9904.9104	1 or 2
25D	5/16"-18 x 3/4" Hex Socket Button Head Cap Screw (for "J" Spring).....	9904.9101	1
25E	5/16"-18 x 3/4" Thread Cutting Hex Head Bolt (for Ratchet Locking Assembly)	9958.0055	4
25F	3/8"-16 x 7/8" Button Socket Head Cap Screw	9904.9201	4
25G	3/8"-16 x 7/8" Panhead Knurled Bolt (for N-Series Bearings)	9904.4276	4
25H	3/8"-16 x 1-1/2" Spinlock Bolt (for "B" Spring) (not shown)	9904.2204	2
27A	3/8"-16 Spinlock Nut.....	9904.6200	8 or 12
27B	5/16"-18 Large Flange Spinlock Nut (for "J" & "C" Springs).....	9904.6100	2
28A	1" Hub Spacer Washer - Plated (1-7/8" OD x 1-5/16" ID x 1/8" Thick).....	9954.0021	As Req'd.
28B	Spring Spacer, per P28A-00070 (for "J", "C" & "L" Springs)	9922.0033	1
28C	EH-936 Disc Washer (E-Coated)	9965.0015	1
28D	Spring Spacer, 1/2" Thick (For "C" & "L" Springs), per P28A-00760 (not shown).....	9954.0015	1
28E	Oval Spring Spacer, per P28A-00020 (for "B" Springs) (not shown).....	9922.0032	1
28F	3/8" Flat Washer (for "C" & "L" Springs) (not shown)	9954.0007	1
29	Woodruff Key #9 (3/16" x 3/4") for Spring Arbor (not shown).....	9916.0080	1
33A	1/4" Welded Barstock Steel Hub Assembly (Specify Serial # and Riser Fittings)	Specify Model	1
33B	3/8" Welded Barstock Steel Hub Assembly (Specify Serial # and Riser Fittings) (not shown).....	Specify Model	1
40	1/4" 90 MxF Steel 10,000 PSI BP Super Swivel Joint (BUNA) (HR-40-0122)	9925.8111	1
40	1/4" 90 MxF Steel 10,000 PSI BP Super Swivel Joint (GLT VITON) (HR40-0124)	9925.8114	1
41A	3/8" 90 MxF Steel 5000 PSI Super Swivel Joint (BUNA) Zerk Fitting (HR41-8102)	9926.8151	1
41B	3/8" 90 MxF Steel 8000 PSI Super Swivel Joint (GLT VITON) Zerk Fitting (HR41-8124) (not shown)	9926.8161	1
46A	1/4" BUNA Packing Kit, BP Super Swivel (SS-4PB-KIT-B8309) (not shown)	9936.0180	1
46B	1/4" VITON Packing Kit, BP Super Swivel (not shown).....	9936.0181	1
47	3/8" VITON (8000 PSI) Packing Kit, Super Swivel (#20137) (not shown).....	9936.0281	1
63	"J" Spring w/ Arbor (Item 64D).....	9921.0030	1
63	"L" Spring w/ Arbor (Item 64D) (not shown).....	9921.0052	1
63	"C" Spring w/ Arbor (Item 64D) (not shown)	9921.0018	1
63	"B" Spring w/ Arbor (Item 64D) (not shown)	9921.0015	1
64A	Ratchet Wheel (2 Position) 180 Deg w/ Hardware, per P64A-00120 (includes Item 25B).....	9922.0015	1
64B	Cap-Plug for Spring (STP-3) Inner Side.....	9922.0036	1
64C	Low Temp Cap-Plug for Spring (BP-2-1/2) Outer Side.....	9922.0037	1
64D	Spring Arbor, per P64A-00110 for "J", "L", "C" & "B" Springs.....	9922.0002	1
64E	Right Hand Ratchet Locking Assembly Complete (see ISO-207 for parts)	9922.0312	1
64E	Left Hand Ratchet Locking Assembly Complete (for Reverse Springs ONLY) (see ISO-207 for parts)...	9922.0311	1
69	N203 Complete Roller Assembly for Model N515 (see ISO-208 for parts)	9939.0110	1
69	N204 Complete Roller Assembly for Model N516 (see ISO-208 for parts) (not shown).....	9939.0111	1
70	N-Series Single Roller Arm, per P70A-03020 (Specify Model).....	9941.0030	2
91	3" Long Anodized Threaded Spacer Pipe for Model N515, per P28A-00880.....	9904.0306	5, 6 or 10
91	4" Long Anodized Threaded Spacer Pipe for Model N516, per P28A-00880 (not shown).....	9904.0308	5, 6 or 10