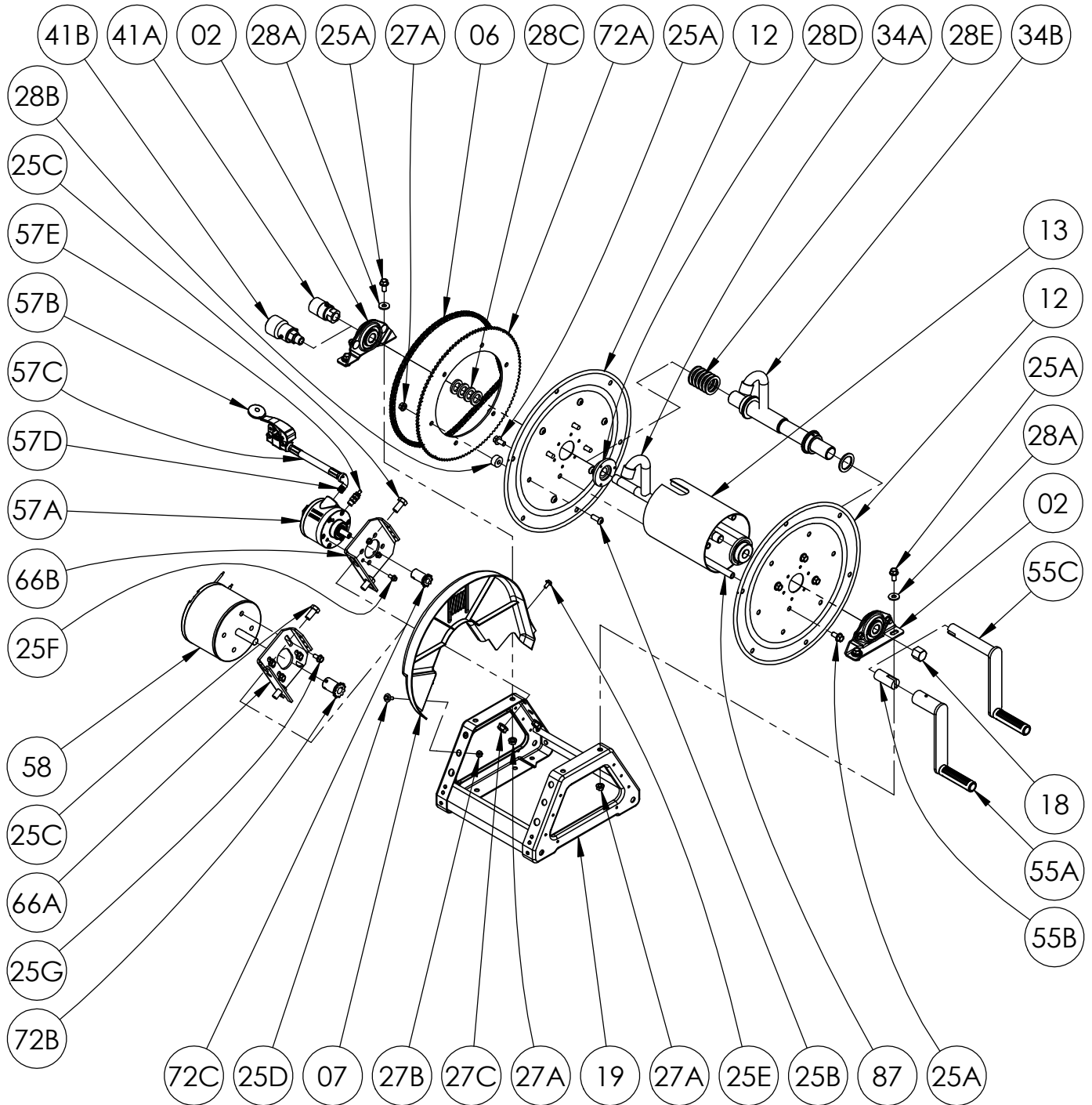


**ISO 90**  
**PARTS LIST**  
**1500 SERIES**  
**POWER REWIND**



**PARTS LIST  
ISO 90  
1500 Series POWER REWIND**

**When Ordering Parts  
BE SURE TO SPECIFY COMPLETE MODEL NUMBER and SERIAL NUMBER OF REEL  
USE PART NUMBER!**

<u>Item #</u>	<u>Description</u>	<u>Part No.</u>	<u>Qty</u>
02	1/2" Pipe-Size (0.826" I.D.) Self Aligning Bearing Complete (see ISO-210 for parts).....	9902.1200	2
02	1" Pipe-Size (1.287" I.D.) Self Aligning Bearing Complete (FH1500 only) (see ISO-210 for parts) (not shown).....	9902.1400	2
06	Length of #35 Chain - 116 Links (43-1/2" Long) w/ Connecting Link .....	9912.0028	1
07	Molded Chain Guard - for Motor on Left, per P07A-01720.....	9957.0030	1
07	Molded Chain Guard - for Motor on Right, per P07A-01710 (not shown) .....	9957.0031	1
12	(17-18) 16-1/2" Dia., 14 GA Disc.....	9903.0516	2
13	Drum, 6" Dia. Aluminum Pipe (Specify Model).....	9905.7112	1
18	1/2" Pipe Cap .....	9965.0013	1
19	Trapezoid Frame Assembly - E-Coated (Specify Model) .....	9908.1000	1
25A	3/8"-16 x 3/4" Spinlock Bolt .....	9904.2201	12
25B	3/8"-16 x 1" Button Socket Head Cap Screw (for Sprocket Mounting).....	9904.9202	6
25C	1/2"-13 x 1" Hex Head Bolt (for Motorplate).....	9904.1402	2
25D	1/4"-20 x 3/4" Hex Washer Head Black Zinc Screw (for Chainguard).....	9904.1071	2
25E	1/4"-20 x 1/2" Hex Washer Head Taptite Screw (for Chainguard).....	9904.1070	1
27A	3/8"-16 Spinlock Nut.....	9904.6200	10
27B	1/4"-20 Small Flange Spinlock Nut - Armor Coat (for Chainguard) .....	9904.6000	2
27C	1/2"-13 Hex Spinlock Nut (for Motorplate).....	9904.5400	2
28A	3/8" Flat Washer .....	9954.0007	4
28B	Sprocket Spacer Washer (1" O.D. x 0.381" I.D. x 1/2" Thick), per P28A-00760 .....	9954.0015	6
28C	1/2" Hub Spacer Washer - Plated (1-3/8" O.D. x 7/8" I.D. x 3/16" Thick).....	9954.0020	As Req'd.
28D	Disc Washer for 1500, per P28A-01160 .....	9965.0040	2
28E	1" Hub Spacer Washer - Plated (1-7/8" O.D. x 1-5/16" I.D. x 1/8" Thick) (FH1500 only).....	9954.0021	As Req'd.
34A	1/2" Welded Iron Pipe Hub (Specify Model/Riser Fittings) .....	9901.0610	1
34A	1/2" Welded 304 SST Hub (Specify Model/Riser Fittings) (FL1500 only) .....	9901.0604	1
34B	1/2" Welded 304 SST Barstock Hub Assembly (Specify Model/Riser Fittings) (FH1500 only) .....	9901.0634	1
41A	1/2" 90 Deg. FxF Steel 5,000 PSI Super Swivel Joint (AFLAS Seals).....	9927.8551	1
41A	1/2" 90 Deg. FxF 304 SST 3,000 PSI Oxygen Super Swivel Joint (GLT VITON Seals) (FL1500 only) .....	9927.8537	1
41B	1/2" 90 Deg. MxF Steel 6,000 PSI Oxygen Super Swivel Joint (GLT VITON Seals) (FH1500 only).....	9927.8177	1
47	1/2" AFLAS Packing Kit for Super Swivel Joint (SS-8-KIT-AL) (not shown).....	9936.0389	1
72A	112T35 Disc Sprocket - 13-3/8" Dia. (E-Coated).....	9910.1321	1
87	Anodized Aluminum Threaded Spacer Pipe.....	Specify Model	4
<b>Electric Motor Only</b>			
25G	5/16"-18 x 5/8" Hex Spinlock Bolt (for Electric Motor) .....	9904.2159	4
58	AN-227 12V DC Face Mount 1/3 HP 650 RPM Motor.....	9915.0042	1
58	AN-239 12V DC Face Mount 1/5 HP 420 RPM Motor (Optional).....	9915.0040	1
58	AN-250 12V DC Face Mount 1/12 HP 220 RPM Motor (Optional).....	9915.0044	1
66A	Electric Motor Mounting Plate for Trapezoid Frame w/ Hardware - E-Coated (includes Item 25G).....	9923.0006	1
72B	11T35 Sprocket - 1-3/4" Long (Plated) .....	9910.1119	1
<b>Air Motor Only</b>			
25F	1/4"-20 x 1/2" Hex Head Spinlock Cap Screw (for Air Motor).....	9904.1058	3
57A	#4 AM Gast Air Motor (4 AM NRV-143) w/ Speed Control Muffler (includes Item 57E).....	9918.1122	1
57B	#3420 Schrader Valve for #4 AM Air Motor .....	9919.0004	1
57C	1/4" MxM NPT x 18" Long Air Hose.....	9919.0007	1
57D	1/4" MxF 90 Degree Street Elbow for #4 AM Air Motor .....	9950.0013	1
57E	1/4" MNPT Speed Control Muffler for #4 AM Air Motor .....	9919.0006	1
66B	Air Motor Mounting Plate for Trapezoid Frame w/ Hardware - E-Coated (includes Item 25F) .....	9923.0013	1
72C	9T35 Sprocket - 1-3/4" Long (1/2" Bore).....	9910.1015	1
<b>Optional Removable Direct Crank Rewind</b>			
55A	H-18 Steel Hand Crank - E-Coated (3" Length) (see ISO-214 for parts) .....	9914.0012	1
55B	1/2" Adapter for Removable Hand Crank for 1500 Series, per P30A-00190.....	9914.0053	1
55C	Removable Hand Crank for 1600/4000 Series - E-Coated (see ISO-256 for parts) (FH1500 only).....	9914.0031	1