



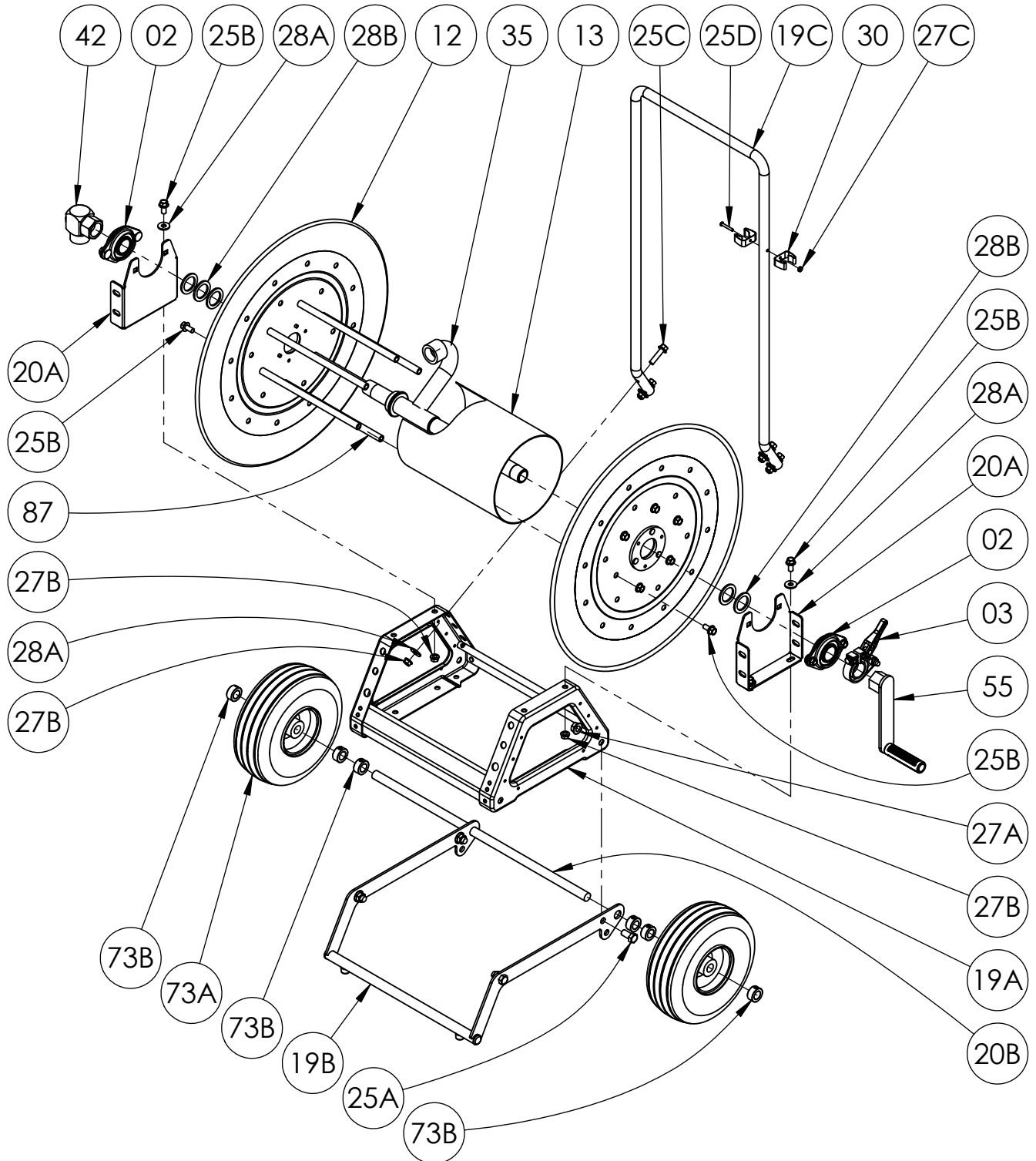
**Hannay Reels®**  
The reel leader.

Hannay Reels, Inc.  
553 State Route 143, Westerlo, NY 12193  
www.hannay.com  
Email: reels@hannay.com

Phone 1-518-797-3791  
Toll Free 1-877-GO-REELS (467-3357)  
Fax 1-800-REELING (733-5464)  
Int'l Fax 1-518-797-3259

**ISO 87**  
PARTS LIST

**MODELS**  
**AT1200 Hose Reel**  
**ATC1250 / AVATC1250 Storage Reels**



**PARTS LIST  
ISO 87  
MODELS AT1200 / ATC1250 / AVATC1250**

**When Ordering Parts  
BE SURE TO SPECIFY COMPLETE MODEL NUMBER and SERIAL NUMBER OF REEL  
USE PART NUMBER!**

<u>Item No.</u>	<u>Description</u>	<u>Part No.</u>	<u>Quantity</u>
02	1" Pipe-Size Self Aligning N-Series Bearing Complete (see ISO-210 for parts) .....	9902.2600	2
03	1" Pipe-Size Cam Lock Drag Brake Complete (see ISO-254 for parts) .....	9947.0140	1
04	1" MIPT x 3/4" MGHT Brass Adapter (not shown).....	9950.0001	1
12	(23-24) 22-3/4" Dia., 14 GA Disc .....	9903.1121	2
13	Drum, 8" Dia. Steel (Specify Model).....	9905.3121	1
19A	Trapezoid Frame Assembly (Steel E-Coated) - Specify Model .....	9908.1000	1
19B	Portable Frame Front Foot Assembly (includes 25A & 27A) .....	9906.0736	1
19C	Removable Push Handle.....	9906.0731	1
20A	Raised Spool Support Bracket (for 1200 Series), per P20A-03970 .....	9965.0147	2
20B	3/4" Dia. Portable Frame Axle - SST (25-1/4" Long) .....	9906.0739	1
25A	1/2"-13 x 1" Hex Head Bolt.....	9904.1402	4
25B	3/8"-16 x 3/4" Spinlock Bolt .....	9904.2201	16
25C	3/8"-16 x 1-1/2" Spinlock Bolt.....	9904.2204	4
25D	#10-32 x 1-1/4" Slotted Round Head Machine Screw (for Retainer Clips).....	9904.8205	1
27A	1/2"-13 Spinlock Nut.....	9904.5400	4
27B	3/8"-16 Spinlock Nut.....	9904.6200	8
27C	#10-32 Hex Nut (for Retainer Clips) .....	9904.4900	1
28A	3/8" Flat Washer .....	9954.0007	8
28B	1" Hub Spacer, 1/8" (Plated).....	9954.0021	As Req'd
30	3/4" Retaining Clip (#225L) .....	9965.0055	2
31	5' Lead-In Garden Hose (for 1200 Series only) (not shown).....	9965.0060	1
32	1" Welded Iron Hub Assembly (for C1250 Series only) (not shown).....	Specify Model	1
35	1" Welded Iron Hub Assembly w/ 3/4" GHT Riser (for 1200 Series only).....	9901.1600	1
42	1" 90 Deg. FxF Super Swivel Joint (BUNA Packing) (for 1200 Series only) .....	9929.8538	1
55	Threaded Hand Crank (see ISO-255 for parts) .....	9914.0041	1
73A	4" x 10" Dia. Pneumatic Tire (for 3/4" Dia. Axle).....	9965.0066	2
73B	Shaft Collar (1-1/4" O.D. x 3/4" I.D. x 9/16" THK).....	9955.0252	6
87	Anodized Aluminum Threaded Spacer Pipe.....	Specify Model	6