



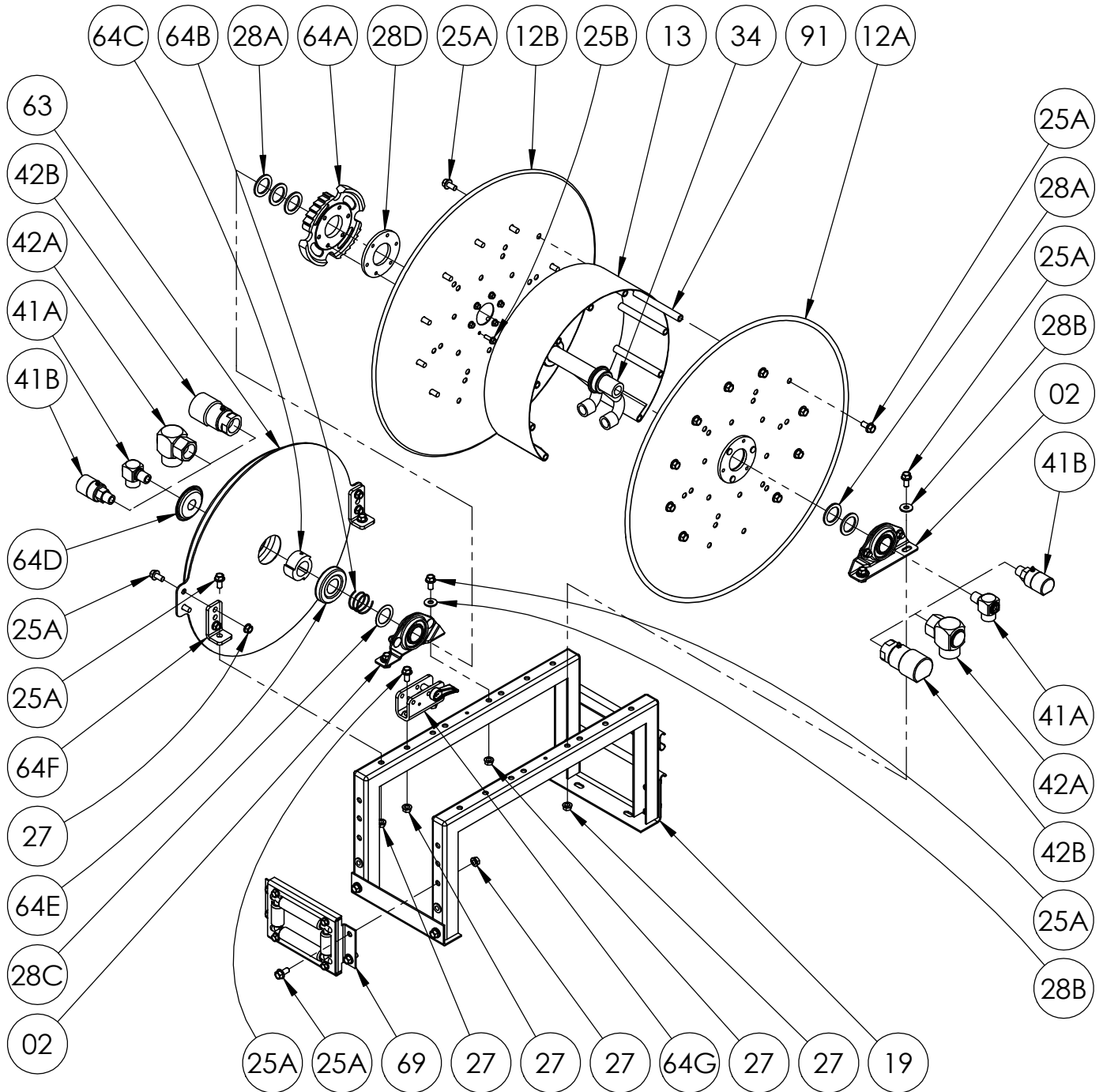
Hannay Reels®
The reel leader.

Hannay Reels, Inc.
553 State Route 143, Westerlo, NY 12193
www.hannay.com
Email: reels@hannay.com

Phone 1-518-797-3791
Toll Free 1-877-GO-REELS (467-3357)
Fax 1-800-REELING (733-5464)
Int'l Fax 1-518-797-3259

ISO 8
PARTS LIST

SERIES 600
Spring Retractable Reel
for Twin Hoses



**PARTS LIST
ISO 8
SERIES 600 Spring Retractable Reel for Twin Hoses**

**When Ordering Parts
BE SURE TO SPECIFY COMPLETE MODEL NUMBER and SERIAL NUMBER OF REEL
USE PART NUMBER!**

<u>Item #.</u>	<u>Description</u>	<u>Part No.</u>	<u>Qty</u>
02	1" Pipe-Size (1.287" I.D.) Self Aligning Bearing Complete (see ISO-210 for parts)	9902.1400	2
12A	Front Disc (includes Disc Washer)	Specify Model	1
12B	Back Disc.....	Specify Model	1
13	Drum, 15-1/2" Dia. 18 GA 304 SST Wrap-Around (Specify Model).....	9905.0178	1
13	Drum, 10-1/2" Dia. 18 GA 304 SST Wrap-Around (Specify Model) (not shown).....	9905.0138	1
19	1-1/2" Steel Rollform Frame for Spring Reels (up to 30-31) (Specify Model).....	9908.0153	1
25A	3/8"-16 x 3/4" Spinlock Bolt	9904.2201	28 or 36
25B	1/4"-20 x 3/4" Hex Head Spinlock Cap Screw	9904.1060	6
27	3/8"-16 Spinlock Nut.....	9904.6200	14
28A	1" Hub Spacer Washer - Plated (1-7/8" O.D. x 1-5/16" I.D. x 1/8" Thick).....	9954.0021	As Req'd.
28B	3/8" Flat Washer	9954.0007	4
28C	1" Thin Hub Spacer - Plated (1-7/8" O.D. x 1-5/16" I.D. x 0.049" Thick)	9954.0019	1
28D	EH-936 Disc Washer (E-Coated)	9965.0015	1
29	3/16" x 3/16" x 1" Square Key (for Spring Arbor) (not shown).....	9922.0031	1
34	1/2" Dual Barstock Steel Hub Assembly (Specify Model).....	9901.0671	1
35	3/4" FIPT Dual Barstock Steel Hub Assembly (Specify Model) (not shown)	9901.1171	1
41A	1/2" 90 Degree MxF Balanced Pressure Steel 3000 PSI Super Swivel Joint (BUNA) (HR41-4102)	9927.8138	2
41A	1/2" 90 Degree MxF Balanced Pressure Steel 3000 PSI Super Swivel Joint (VITON) (HR41-4104)	9927.8139	2
41B	1/2" 90 Degree MxF Steel 5000 PSI Full Flow Super Swivel Joint (GLT VITON) Zerk Fitting (HR41-0106).....	9927.8153	2
42A	1" 90 Degree FxF Balanced Pressure Steel 3000 PSI Super Swivel Joint (BUNA) (HR42-4002)	9929.8538	2
42B	1" 90 Degree FxF Steel 4000 PSI Full Flow Super Swivel Joint (GLT Viton) (HR42-0004)	9929.8552	2
47A	1/2" VITON Packing for Full Flow Swivel Joint (SS-8-KIT-V- 3610) (not shown).....	9936.0381	2
47B	1/2" GLT VITON/BUNA Packing for Balanced Pressure Swivel Joint (SS-8-PB-KIT-IL-GLT-008- 20139) (not shown)	9936.0374	2
48A	1" BUNA Packing for Balanced Pressure Swivel Joint (SS-16BP KIT- 20267) (not shown)	9936.0570	2
48B	1" GLT VITON Packing for Full Flow Swivel Joint (SS-16-KIT-GLT-20272) (not shown).....	9936.0581	2
63	"B" Spring w/ Arbor (includes Item 64C).....	9921.0015	1
63	"A" Spring w/ Arbor (includes Item 64C) (not shown).....	9921.0010	1
64A	Ratchet Wheel (2 Position) 180 Deg w/ Hardware (includes Item 25B).....	9922.0015	1
64B	302 Stainless Steel Spring for Dust Cap-Plugs	9922.0038	1
64C	Spring Arbor for "B" Spring	9922.0002	1
64C	Spring Arbor for "A" Spring (not shown)	9922.0001	1
64D	Cap-Plug for Spring (BP-2-1/2) Outer Side for 600 Series.....	9922.0041	1
64E	Cap-Plug for Spring (STP-3) Inner Side	9922.0036	1
64F	Mounting L-Bracket (3" x 1.5") for Spring Motor.....	9922.0009	2
64G	Left Hand Ratchet Locking Assembly for Rollform Frames (see ISO-244 for parts).....	9922.0321	1
69	R205 Roller Assembly Complete for Model 617 (see ISO-250 for parts).....	9939.0102	1
69	R203 Roller Assembly Complete for Model 615 (see ISO-250 for parts) (not shown)	9939.0100	1
69	R206 Roller Assembly Complete for Model 618 (see ISO-250 for parts) (not shown)	9939.0103	1
91	5" Long Anodized Threaded Spacer Tube.....	9904.0310	6 or 10
91	3" Long Anodized Threaded Spacer Tube (not shown).....	9904.0306	6 or 10
91	6" Long Anodized Threaded Spacer Tube (not shown).....	9904.0312	6 or 10