



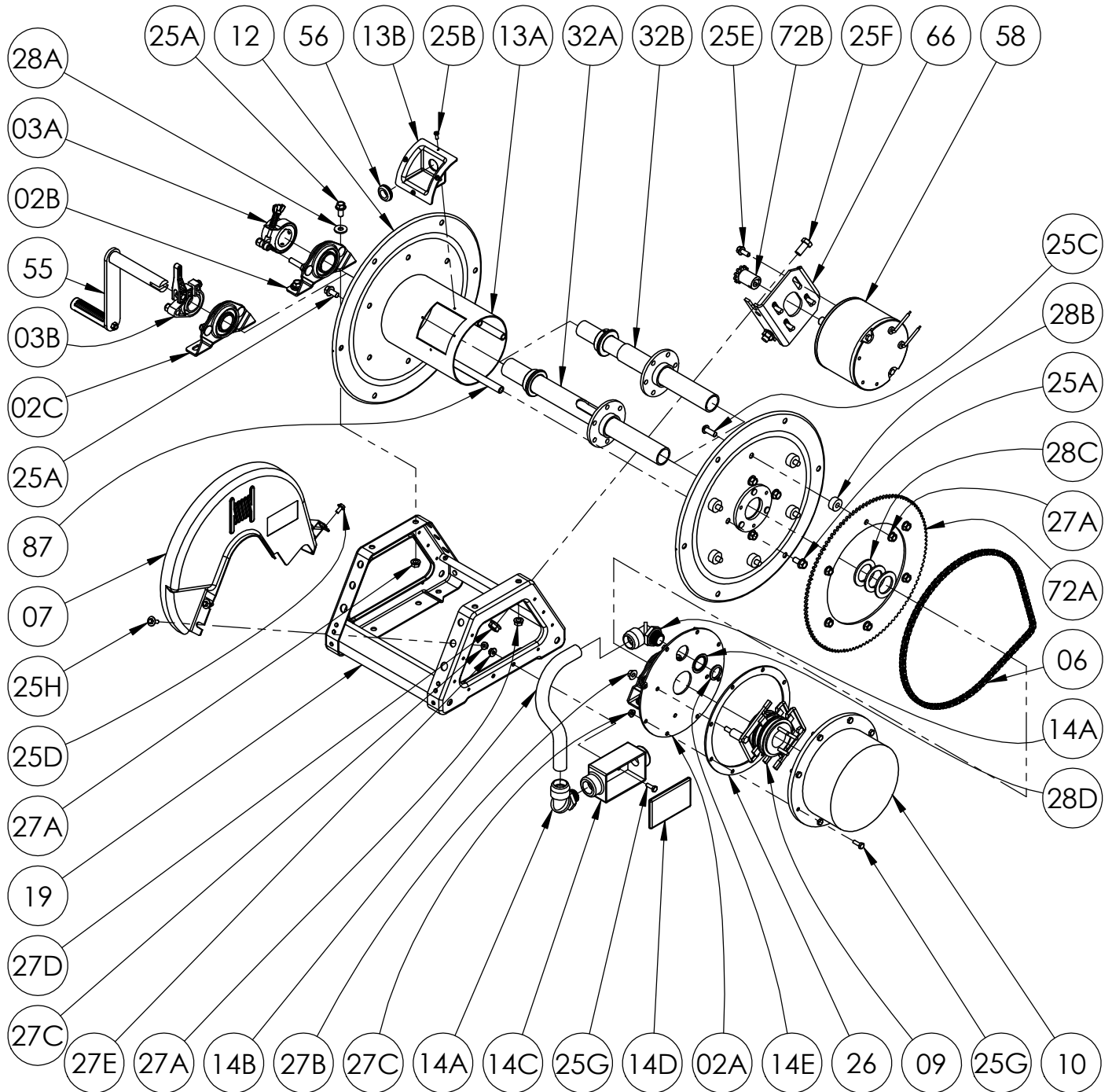
Hannay Reels®
The reel leader.

Hannay Reels, Inc.
553 State Route 143, Westerlo, NY 12193
www.hannay.com
Email: reels@hannay.com

Phone 1-518-797-3791
Toll Free 1-877-GO-REELS (467-3357)
Fax 1-800-REELING (733-5464)
Int'l Fax 1-518-797-3259

ISO 76
PARTS LIST

ECR1600/CR1600 SERIES
Cable Reel



**PARTS LIST
ISO 76
ECR1600/CR1600 Series Cable Reel**

**When Ordering Parts
BE SURE TO SPECIFY COMPLETE MODEL NUMBER and SERIAL NUMBER OF REEL
USE PART NUMBER!**

<u>Item #</u>	<u>Description</u>	<u>Part #</u>	<u>Qty</u>
02A	Collector Assembly Backing Plate Complete w/ Pillow Block Bearing (see ISO-259 for parts).....	9943.0031	1
02B	1-1/2" (1.5" I.D.) Self Aligning Bearing Complete (see ISO-210 for parts) (ECR1600 only).....	9902.4000	1
02C	1" Pipe-Size (1.287" I.D.) Self Aligning Bearing Complete (see ISO-210 for parts) (CR1600 only)	9902.1400	1
03A	Band (Comet) Brake Assembly w/ 1.5" I.D. Brake Hub (see ISO-212 for parts) (ECR1600 only) .	9947.0063	1
03B	Cam Lever Drag Brake Kit (see ISO-254 for parts) (CR1600 only).....	9947.0140	1
06	Length of #35 Chain- 118 Links (44-1/4" Long) w/ Connecting Link	9912.0029	1
07	Molded Chain Guard - for Motor on Right, per P07A-01710	9957.0031	1
07	Molded Chain Guard - for Motor on Left, per P07A-01720 (not shown).....	9957.0030	1
09	Collector Assembly	Specify Collector	1
10	Collector Cover w/ Gasket (includes Item 26)	Specify Collector	1
12	(17-18) 16-1/2" Dia., 14 GA Disc w/ EH-936 Washer	9903.0517	2
13A	Drum, 6" Dia. Aluminum Pipe (Specify Model)	9905.7112	1
13B	6" Dia. Drum Insert (Plastic) w/ 1" Grommet Hole	9955.0019	1
14A	3/4" Hubbell Swivel-Loc Liquidtight Connector (RACO 4753).....	9955.0009	2
14B	3/4" Liquidtight Flex Conduit.....	9955.0114	per ft.
14C	Appleton Junction Box.....	Specify Collector	1
14D	Appleton Junction Box Cover w/ Screws.....	9955.0044	1
14E	3/4" Locking Nut for Liquidtight Connector	9955.0014	1
19	Trapezoid Frame Assembly - E-Coated (Specify Model)	9908.1000	1
25A	3/8"-16 x 3/4" Spinlock Bolt	9904.2201	12
25B	#10 x 1/2" Self Tapping Type AB Pan Head Screw	9958.0003	4
25C	3/8"-16 x 1" Button Socket Head Cap Screw (for Sprocket Mounting).....	9904.9202	6
25D	1/4"-20 x 1/2" Hex Washer Head Taptite Screw (for Chainguard).....	9904.1070	1
25E	5/16"-18 x 3/4" Spinlock Bolt (for Motor Mounting).....	9904.2101	4
25F	1/2"-13 x 1" Hex Head Bolt (for Motorplate)	9904.1402	2
25G	1/4"-20 x 3/4" Hex Head Cap Screw (for Collector Assembly)	9904.1001	10
25H	1/4"-20 x 3/4" Hex Washer Head Black Zinc Screw (for Chainguard).....	9904.1071	2
26	Collector Cover Gasket	9943.0004	1
27A	3/8"-16 Spinlock Nut.....	9904.6200	10
27B	5/16"-18 Large Flange Spinlock Nut.....	9904.6100	2
27C	1/4"-20 Small Flange Spinlock Nut (Armor Coat)	9904.6000	10
27D	1/2"-13 Hex Spinlock Nut (for Motorplate).....	9904.5400	2
27E	1/4"-20 Large Flange Spinlock Nut (for Junction Box)	9904.6002	2
28A	3/8" Flat Washer	9954.0007	4
28B	Sprocket Spacer Washer (1" O.D. x 0.381" I.D. x 1/2" Thick), per P28A-00760	9954.0015	6
28C	Cable Hub Spacer Washer (1.5" I.D. x 10 GA).....	9954.0025	As Req'd.
28D	Reducing Washer (1-5/8" O.D. x 1-3/32" I.D.) for 3/4" Liquidtight Connector	9955.0013	As Req'd.
28E	1" Hub Spacer Washer - Plated (1-7/8" O.D. x 1-5/16" I.D. x 1/8" Thick) (for CR1600 only) (not shown).....	9954.0021	2
32A	1.5" Hub Assembly, per P32A-00040 (for ECR1600) (Specify Model)	9955.0076	1
32B	1" Hub Assembly, per P32A-00030 (for CR1600) (Specify Model).....	9955.0075	1
55	Removable Hand Crank (CR1600 only) (see ISO-256 for parts)	9914.0031	1
56	1" Rubber Grommet	9955.0032	1
58	AN-250 12V DC Face Mount 1/12 HP 220 RPM Motor.....	9915.0044	1
58	AN-239 12V DC Face Mount 1/5 HP 420 RPM Motor (Optional).....	9915.0040	1
66	Motor Mounting Plate for Trapezoid Frame w/ Hardware, per P66A-00090 (includes Item 25E) ..	9923.0006	1
72A	11T35 Disc Sprocket - 13-3/8" Dia. (E-Coated).....	9910.1321	1
72B	11T35 Sprocket - 1-3/4" Long (Plated)	9910.1119	1
87	Anodized Aluminum Threaded Spacer Pipe.....	Specify Model	4