



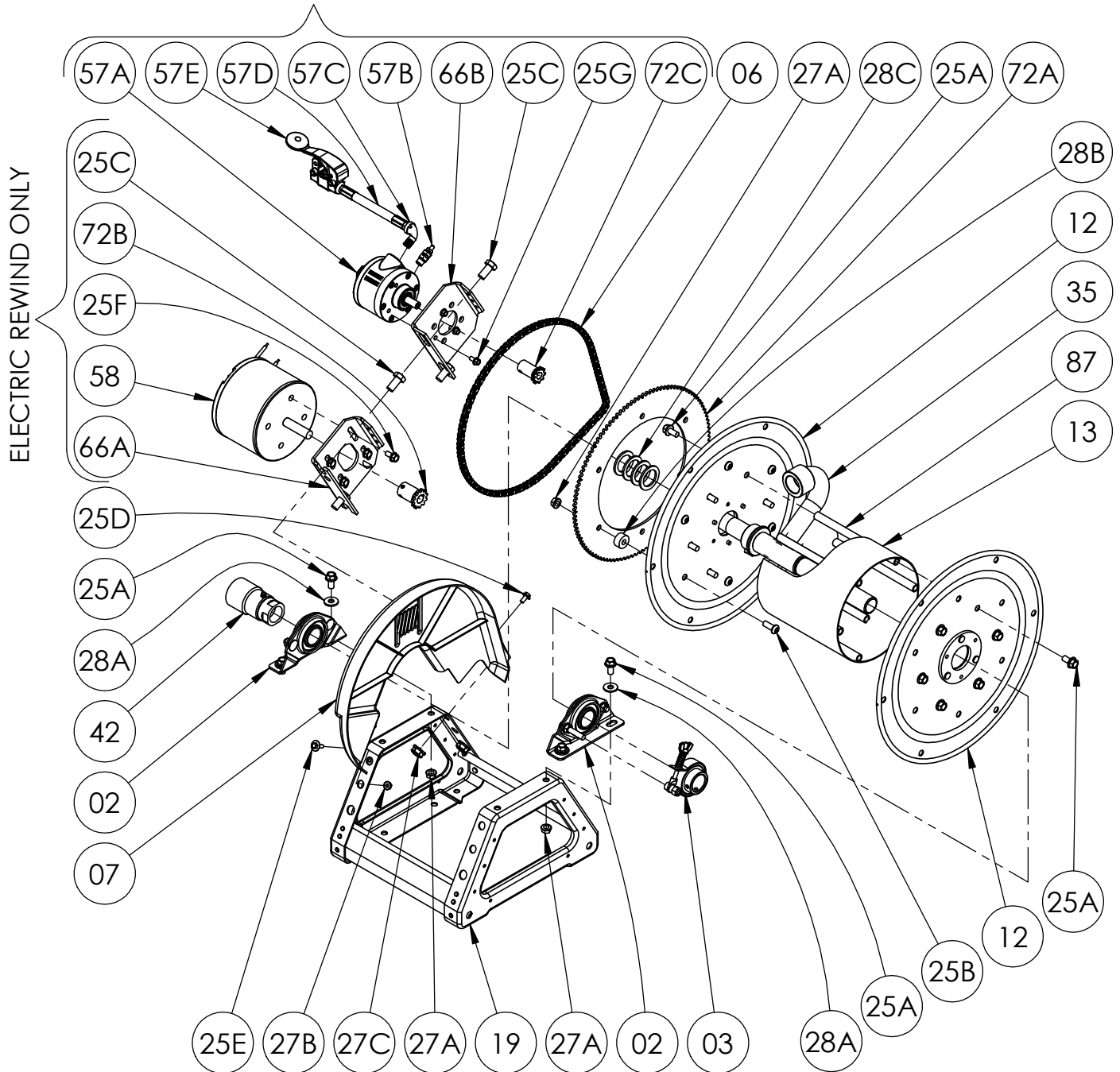
Hannay Reels®
The reel leader.

Hannay Reels, Inc.
553 State Route 143, Westerlo, NY 12193
www.hannay.com
Email: reels@hannay.com

Phone 1-518-797-3791
Toll Free 1-877-GO-REELS (467-3357)
Fax 1-800-REELING (733-5464)
Int'l Fax 1-518-797-3259

ISO 68
PARTS LIST
SERIES 4000
POWER REWIND

AIR REWIND ONLY



**PARTS LIST
ISO 68
SERIES 4000 POWER REWIND**

**When Ordering Parts
BE SURE TO SPECIFY COMPLETE MODEL NUMBER and SERIAL NUMBER OF REEL
USE PART NUMBER!**

<u>Item #</u>	<u>Description</u>	<u>Part No.</u>	<u>Qty</u>
02	1" Pipe-Size (1.287" I.D.) Self Aligning Bearing Complete (see ISO-210 for parts)	9902.1400	2
03	Band (Comet) Brake Assembly Complete (see ISO-212 for parts)	9947.0090	1
06	Length of #35 Chain - 116 Links (43-1/2" Long) w/ Connecting Link	9912.0028	1
07	Molded Chain Guard - for Motor on Left, per P07A-01720.....	9957.0030	1
07	Molded Chain Guard - for Motor on Right, per P07A-01710 (not shown)	9957.0031	1
12	(17-18) 16-1/2" Dia., 14 GA. Disc w/ EH-936 Washer.....	9903.0721	2
13	Drum, 8" Dia. 14 GA. Steel (Specify Model).....	9905.3121	1
19	Trapezoid Frame Assembly - E-Coated (Specify Model)	9908.1000	1
25A	3/8"-16 x 3/4" Spinlock Bolt	9904.2201	16
25B	3/8"-16 x 1" Button Socket Head Cap Screw (for Sprocket Mounting).....	9904.9202	6
25C	1/2"-13 x 1" Hex Head Bolt (for Motorplate)	9904.1402	2
25D	1/4"-20 x 1/2" Hex Washer Head Taptite Screw (for Chainguard).....	9904.1070	1
25E	1/4"-20 x 3/4" Hex Washer Head Black Zinc Screw (for Chainguard).....	9904.1071	2
27A	3/8"-16 Spinlock Nut.....	9904.6200	10
27B	1/4"-20 Small Flange Spinlock Nut - Armor Coat (for Chainguard)	9904.6000	2
27C	1/2"-13 Hex Spinlock Nut (for Motorplate).....	9904.5400	2
28A	3/8" Flat Washer	9954.0007	4
28B	Sprocket Spacer Washer (1" O.D. x 0.381" I.D. x 1/2" Thick), per P28A-00760	9954.0015	6
28C	1" Hub Spacer Washer - Plated (1-7/8" O.D. x 1-5/16" I.D. x 1/8" Thick).....	9954.0021	As Req'd.
35	1" Steel Hub Assembly (Specify Model/Riser Fitting).....	9901.1600	1
42	1" 90 Deg FxF Full Flow Super Swivel Joint (GLT VITON Packing).....	9929.8552	1
72A	112T35 Disc Sprocket - 13-3/8" Dia. (E-Coated).....	9910.1321	1
87	Anodized Aluminum Threaded Spacer Pipe.....	Specify Model	6
ELECTRIC REWIND ONLY			
25F	5/16"-18 x 3/4" Spinlock Bolt (for Electric Motor).....	9904.2101	4
58	AN-227 12V DC Face Mount 1/3 HP 650 RPM Motor.....	9915.0042	1
58	AN-239 12V DC Face Mount 1/5 HP 420 RPM Motor (Optional).....	9915.0040	1
66A	Electric Motor Mounting Plate for Trapezoid Frame w/ Hardware - E-Coated (includes Item 25F)....	9923.0006	1
72B	11T35 Sprocket - 1-3/4" Long (Plated)	9910.1119	1
AIR REWIND ONLY			
25G	1/4"-20 x 1/2" Hex Head Spinlock Cap Screw (for Air Motor).....	9904.1058	3
57A	#4 AM Gast Air Motor (4 AM NRV-143) w/ Speed Control Muffler (includes Item 57B).....	9918.1122	1
57B	1/4" MNPT Speed Control Muffler for #4 AM Air Motor	9919.0006	1
57C	1/4" MxF 90 Degree Street Elbow for #4 AM Air Motor	9950.0013	1
57D	1/4" MxM NPT x 18" Long Air Hose.....	9919.0007	1
57E	#3420 Schrader Valve for #4 AM Air Motor	9919.0004	1
66B	Air Motor Mounting Plate for Trapezoid Frame w/ Hardware - E-Coated (includes Item 25G).....	9923.0013	1
72C	9T35 Sprocket - 1-3/4" Long (1/2" Bore).....	9910.1015	1