



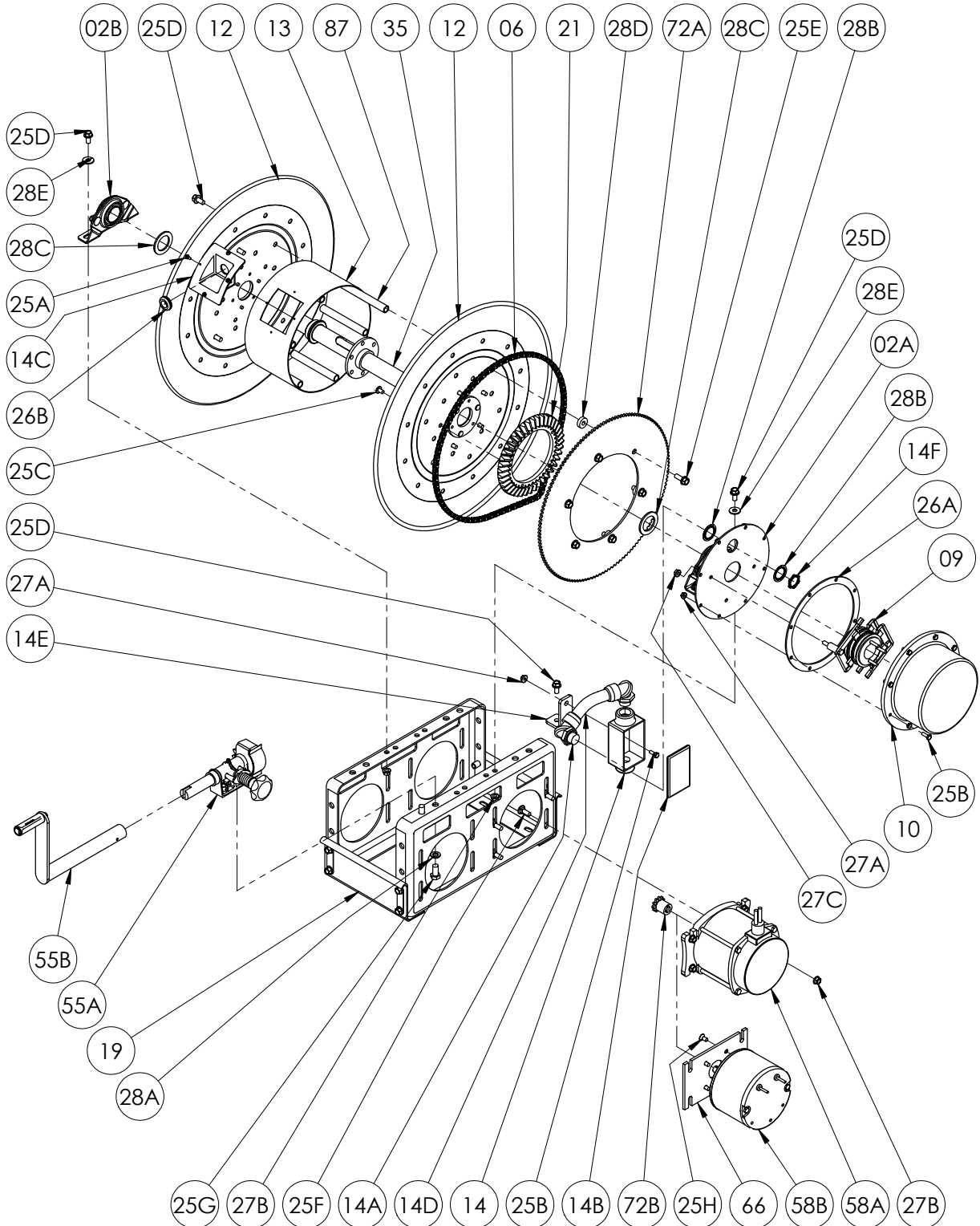
Hannay Reels®
The reel leader.

Hannay Reels, Inc.
553 State Route 143, Westerlo, NY 12193
www.hannay.com
Email: reels@hannay.com

Phone 1-518-797-3791
Toll Free 1-877-GO-REELS (467-3357)
Fax 1-800-REELING (733-5464)
Int'l Fax 1-518-797-3259

ISO 45
PARTS LIST

Series CR6600



**PARTS LIST
ISO 45
Series CR6600**

**When Ordering Parts
BE SURE TO SPECIFY COMPLETE MODEL NUMBER and SERIAL NUMBER OF REEL
USE PART NUMBER!**

<u>Item No.</u>	<u>Description</u>	<u>Part No.</u>	<u>Quantity</u>
02A	1-1/2" Self Aligning Bearing w/ Collector Backing Plate Assembly (See ISO-259 for Parts).....	9943.0031	1
02B	1-1/2" Self Aligning Bearing Assembly (See ISO-210 for Parts).....	9902.4000	1
06	Chain, #35	Specify Model	1
09	Collector Assy. Complete.....	Specify Collector	1
10	Collector Cover.....	Specify Collector	1
12	Disc Assembly	Spec Model/Serial #	2
13	Drum, 10-1/2" Diameter (Specify Model).....	9905.3131	1
14	Red Dot Junction Box Complete	Specify Collector	1
14A	3/4" 90° Liquidtight Connector.....	9955.0009	2
14B	Junction Box Cover w/Screws.....	9955.0044	1
14C	Plastic Drum Insert (for 10.5" diameter drum).....	9955.0022	1
14D	3/4" Liquidtight Flex Conduit.....	9955.0114	1
14E	Junction Box "L" Mounting Bracket	9955.0042	1
14F	3/4" Locking Nut for Liquidtight Connector	9955.0014	1
19	Small Press Frame Assembly.....	Specify Model	1
19	Large Press Frame Assembly	Specify Model	1
21	Ring Gear, H-26 (Up to 25-26)	9914.0372	1
21	Ring Gear, H-28.....	9914.0382	1
25A	#10 x 1/2" Self Tap Slotted Hex Head Screw	9958.0003	4
25B	1/4"-20 x 3/4" Hex Head Bolt.....	9904.1001	10
25C	5/16"-18 x 3/4" Hex Head Bolt.....	9904.1101	5
25D	3/8"-16 x 3/4" Spinlock Bolt	9904.2201	11
25E	3/8"-16 x 1" Spinlock Bolt	9904.2202	6
25F	3/8"-16 x 1" Carriage Bolt.....	9904.0200	4
25G	1/2"-13 x 1" Hex Head Bolt.....	9904.1402	2
25H	5/16"-18 x 5/8" Hex Flat Head Socket Screw	9958.0027	4
26A	Collector Cover Gasket	9943.0004	1
26B	1" Rubber Grommet	9955.0032	1
27A	1/4"-20 Spinlock Nut.....	9904.6000	10
27B	3/8"-16 Spinlock Nut.....	9904.6200	8
27C	5/16"-18 Large Flange Spinlock Nut.....	9904.6100	2
28A	1/2" Lock Washer	9954.0030	2
28B	3/4" Reducing Washer.....	9955.0013	2
28C	Hub Spacer.....	9954.0025	8
28D	Sprocket Spacer.....	9954.0017	6
28E	3/8" Flat Washer.....	9954.0007	4
35	Hub Assembly (Specify Model/Serial Number).....	9955.0201	1
55A	CR 6600 Auxiliary Bevel Gear Rewind w/ H27 (See ISO-209 for Parts).....	9914.0213	1
55A	CR 6600 Auxiliary Bevel Gear Rewind w/ H29 (See ISO-209 for Parts).....	9914.0214	1
55B	Crank Handle, H-18 Complete (See ISO-214 for Parts).....	9914.0011	1
58A	Motor, 12 Volt Explosion-Proof	9915.0003	1
58B	Motor, 12 Volt Non-Explosion-Proof	9915.0042	1
66	Mounting Plate for Non-Explosion-Proof Motor.....	9923.0008	1
72A	112T35 Disc Sprocket	9910.1321	1
72A	138T35 Disc Sprocket	9910.1423	1
72A	180T35 Disc Sprocket	9910.1526	1
72B	Motor Sprocket, 11T35 x 1-5/16	9910.1118	1
72B	Motor Sprocket, 11T35 x 1-3/4	9910.1119	1
87	Anodized Threaded Spacer Pipe.....	Spec Model	6