



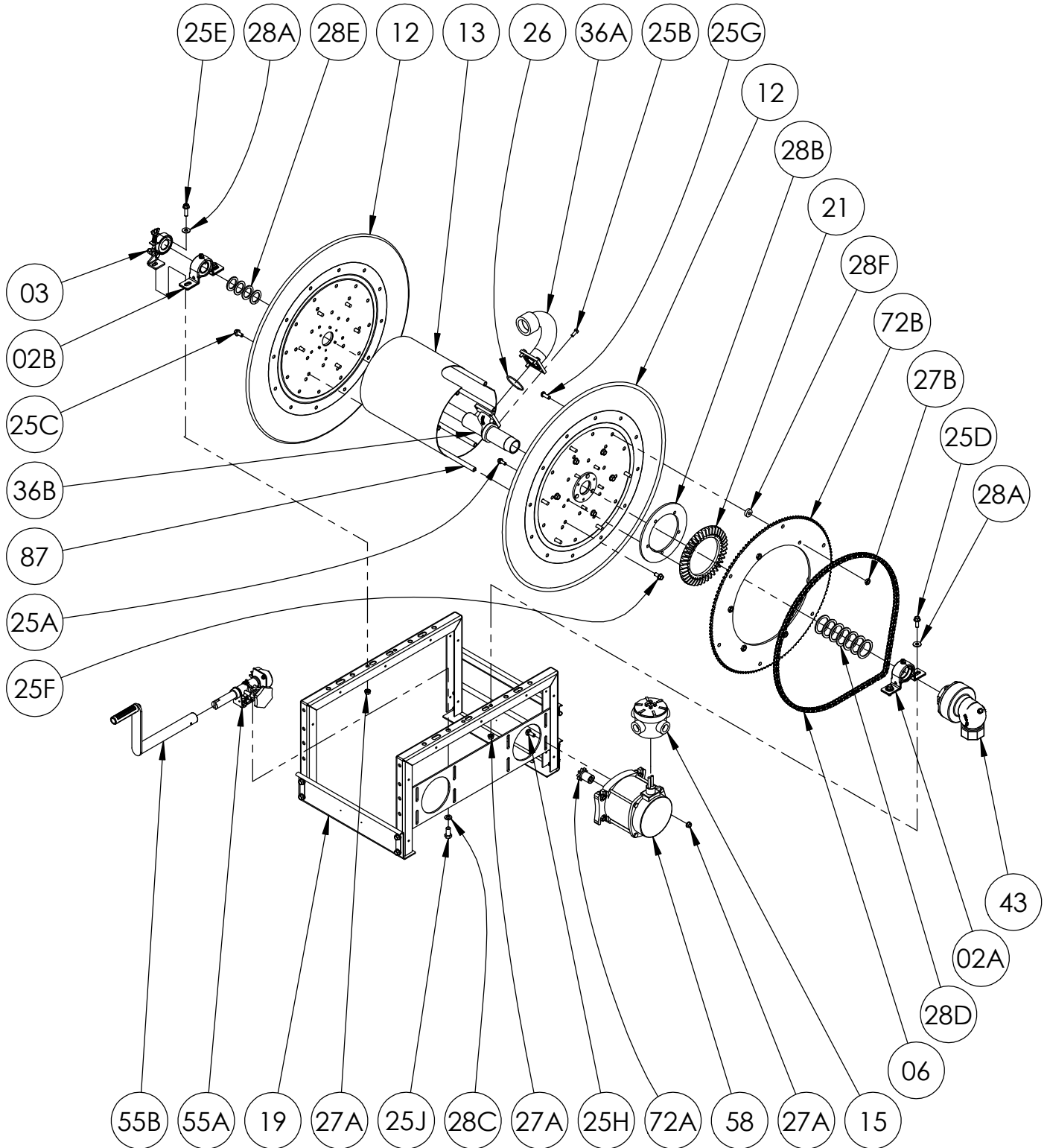
Hannay Reels®
The reel leader.

Hannay Reels, Inc.
553 State Route 143, Westerlo, NY 12193
www.hannay.com
Email: reels@hannay.com

Phone 1-518-797-3791
Toll Free 1-877-GO-REELS (467-3357)
Fax 1-800-REELING (733-5464)
Int'l Fax 1-518-797-3259

ISO 271
PARTS LIST

PB Series
Manual or Power Rewind
Rollform Frame (≤ 36" disc size)



**PARTS LIST
ISO 271**

PB Series - Manual or Power Rewind Rollform Frame (≤ 36" disc size)

**When Ordering Parts
BE SURE TO SPECIFY COMPLETE MODEL NUMBER and SERIAL NUMBER OF REEL
USE PART NUMBER!**

Item #	Description	Part No.	Qty
02A	1-1/2" Pipe-Size (1.904" I.D.) Split Bronze Bearing (see ISO-211 for parts).....	9902.1612	1
02B	1" Pipe-Size (1.287" I.D.) Bronze Bearing (see ISO-211 for parts).....	9902.1630	1
03	Band Brake Assembly (Strap Bearing Style) w/ L-Bracket (see ISO-212 for parts).....	9947.0099	1
06	#40 Chain.....	Specify Model	1
12	Disc Assembly (includes Disc Washer) (Specify Front or Back).....	Specify Model	2
13	Drum, 10-1/2" Dia. 14 GA Steel (Specify Model).....	9905.3131	1
15	Red Dot 5-Port Round Junction Box Complete.....	9917.0061	1
19	1-1/2" Steel Rollform Frame Assembly.....	Specify Model	1
21	H-26 Ring Gear.....	9914.0372	1
21	H-28 Ring Gear (for Manual Rewind reels) (not shown).....	9914.0382	1
25A	5/16"-18 x 3/4" Spinlock Bolt (for H-26 Ring Gear).....	9904.2101	5
25B	5/16"-18 x 3/4" Hex Head Cap Screw (Grade 8) (for Riser Flange).....	9904.1101	4
25C	3/8"-16 x 3/4" Spinlock Bolt.....	9904.2201	6
25D	3/8"-16 x 1" Spinlock Bolt.....	9904.2202	3 or 4
25E	3/8"-16 x 1-1/4" Spinlock Bolt (for Brake Bracket).....	9904.2203	1
25F	3/8"-16 x 3/4" Spinlock Bolt (for 134T40 Sprocket).....	9904.2201	6
25F	3/8"-16 x 1-1/2" Hex Head Cap Screw (for 104T40 Sprocket) (not shown).....	9904.1204	6
25G	3/8"-16 x 1" Button Socket Cap Screw (Armor Coat) (for 134T40 Sprocket).....	9945.0058	6
25H	3/8"-16 x 1" Steel Carriage Bolt w/ Nut (for Motor Mounting) (includes Item 27A).....	9904.0200	4
25J	1/2"-13 x 1" Hex Head Bolt.....	9904.1402	2
26	2-5/8" (BUNA) O-Ring for 1-1/2" Riser.....	9965.0028	1
27A	3/8"-16 Spinlock Nut.....	9904.6200	8
27B	3/8"-16 Hex Head Nut (for 134T40 Sprocket).....	9904.5200	6
28A	3/8" Flat Washer.....	9954.0007	4
28B	Special 1/4" Thick Aluminum Backing Plate for H-26.....	9914.0581	1
28C	1/2" Split Lock Washer (Armor Coat).....	9954.0030	2
28D	1-1/2" Hub Spacer Washer - Plated (2.5" O.D. x 1.920" I.D. x 0.125" Thick).....	9954.0022	As Req'd.
28E	1" Hub Spacer Washer - Plated (1-7/8" O.D. x 1-5/16" I.D. x 1/8" Thick).....	9954.0021	As Req'd.
28F	EH-765 Special Spacer for Disc Sprocket (1" x 5/16" w/ 3/8" Hole).....	9954.0017	6
28G	3/8" Lock Washer, Internal Tooth (for 104T40 Sprocket) (not shown).....	9954.0095	6
29	Woodruff Key #9 (3/16" x 3/4") (for Explosion Proof Motor and Strap Brake) (not shown).....	9916.0080	1 or 2
36A	1-1/2" Iron Pipe Riser, only w/ O-Ring (Specify Riser Fitting) (includes Item 26).....	9901.3760	1
36B	1-1/2" Flange Iron Pipe Hub, only (Specify Model).....	9901.3640	1
43	1-1/2" 90 Degree FxF Steel 350 PSI Full Circle Swivel Joint.....	9930.0531	1
55A	Manual Rewind Assembly w/ H-27 (see ISO-209 for parts).....	9914.0200	1
55A	Manual Rewind Assembly w/ H-29 (for Manual Rewind reels) (see ISO-209 for parts) (not shown).....	9914.0210	1
55B	H-18 Steel Hand Crank - E-Coated (10" Length) (see ISO-214 for parts).....	9914.0011	1
58	SX-743 12V DC Flange 2/3 HP 500 RPM Explosion Proof Motor (IP68 Rated).....	9915.0010	1
72A	9T40 Motor Sprocket - 1-5/16" Long (Plated).....	9910.0917	1
72B	134T40 Disc Sprocket - 21.62" Dia. Chrome Silver).....	9910.3125	1
72B	104T40 Disc Sprocket - 16.85" Dia. (Chrome Silver) (not shown).....	9910.3121	1
87	Anodized Aluminum Threaded Spacer Pipe.....	Specify Model	6