

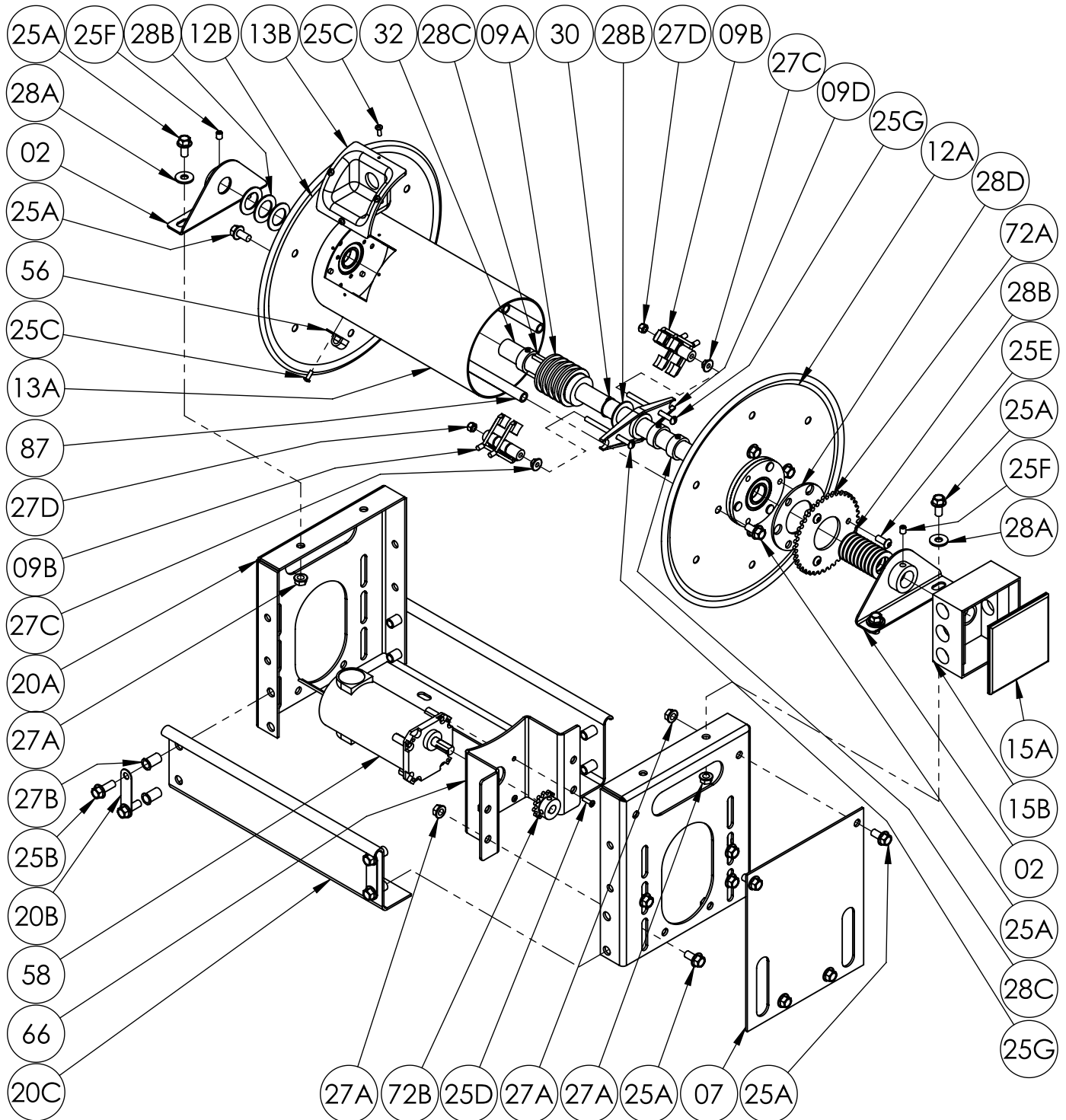


Hannay Reels®

The reel leader.

Hannay Reels, Inc., 553 State Route 143
Westerlo, NY 12193
Telephone 518-797-3791 • Toll Free 1-877-GO-REELS (467-3357)
FAX 1-800-REELING (733-5464)
INT'L FAX (518) 797-3259
Website: www.hannay.com
E-mail: reels@hannay.com

ISO 230 PARTS LIST ESFCR1600 Series Electric Rewind



PARTS LIST
ISO 230
ESFCR1600 Series - Electric Rewind

When ordering parts
BE SURE TO SPECIFY COMPLETE MODEL NUMBER and SERIAL NUMBER OF REEL.
USE PART NUMBER!

Item No.	Description	PART NUMBER	Quantity
2	Stationary Pillow Block Bearing Assembly, P02A-00520.....	9902.2830	2
6	#35 Chain- 80 Links (30" Long) w/ Connecting Link (Not Shown).....	9912.0034	1
7	Lower Chain Guard for "ESF" Series Reels, per P07A-00650.....	9957.0045	1
09A	4 Conductor 30 Amp Collector Assembly 1" Bore (Optional) (Includes 09B) ...	9942.0427	1
09A	3 Conductor 30 Amp Collector Assembly 1" Bore (Includes 09C) (Not Shown)	9942.0327	1
09B	4 Conductor 30 Amp Brush Harness Assembly	9943.0066	1
09C	3 Conductor 30 Amp Brush Harness Assembly (Not Shown).....	9943.0065	1
09D	Nylon Brush Holder, per P10A-00040	9955.0054	1
12A	(14-16) 14" Dia. Tipped Disc with Disc Washers and Bearing, Motor Side	9903.0304	1
12B	(14-16) 14" Dia. Tipped Disc with Disc Washers and Bearing, Non Motor Side	9903.0303	1
13A	6" Dia. Aluminum Drum (Specify Model).....	9905.7112	1
13B	6" Dia. Drum Insert (Plastic) with 1" Grommet Hole.....	9955.0019	1
15A	Aluminum Junction Box Cover w/ gasket and hardware.....	9955.0049	1
15B	Aluminum Junction Box (4.5" x 4.5" x 2") w/ (2) 3/4" Ports.....	9955.0048	1
19	"ESF" Series Frame Assembly (Specify Model), per A19A-00430	9908.2031	1
20A	"ESF" Series Side Frame, per P20A-01990.....	9906.5051	2
20B	Oval Insert Cover Plate (18 GA) (Steel E-Coated)	9958.0102	4
20C	2" x 4" Footstock (Specify Model) (Steel E-Coated).....	9907.3000	2
25A	3/8"-16 x 3/4" Spinlock Bolt	9904.2201	20
25B	3/8"-16 x 1" Spinlock Bolt	9904.2202	8
25C	#10 x 1/2" Long Self Tap Pan Head Screw.....	9958.0003	5
25D	10-32 x 5/8" Hex Socket Button Head Cap Screw.....	9904.9041	4
25E	5/16"-18 x 3/4" Hex Socket Button Head Cap Screw.....	9904.9101	3
25F	5/16"-18 x 3/8" Allen Set Screw	9958.0007	2
25G	1/4"-20 x 6" Round Head Slotted Screw (For 4 Conductor Reels)	9958.0012	2
25G	1/4"-20 x 3" Round Head Slotted Screw (For 3 Conductor Reels) (Not Shown)	9958.0036	2
27A	3/8"-16 Spinlock Nut	9904.6200	12
27B	3/8"-16 Blind Insert	9958.0100	8
27C	1/4"-20 Large Flange Spinlock Nut.....	9904.6002	2
27D	1/4"-20 Nylon Lock Nut.....	9904.6001	2
28A	3/8" Flat Washer	9954.0007	4
28B	Hub Spacers 1-5/8" O.D. x 1" I.D. x 0.075" Thick	9954.0035	14
28C	Locking Collar 1-5/16" O.D. x 1" I.D. x 1/2" Thick w/ set screws	9914.0351	3
28D	Sprocket Spacer Washer, per P28A-01020	9954.0090	1
30	1" External Retaining Ring	9951.0021	1
32	ESFCR1600 Series 1" Hub, per P32A-00520.....	9955.1050	1
56	1/2" Cable Clamp, Vinyl Coated	9955.0015	1
58	Bodine 12V DC Face Mount 1/14 HP 60 RPM Motor	9915.1000	1
58	Bodine 24V DC Face Mount 1/14 HP 60 RPM Motor (Optional)	9915.1002	1
66	Inboard Motor Mounting Plate for "ESF" Series Reels, per P66A-01030	9923.0047	1
72A	40T35 x 5" Dia. Disc Sprocket	9910.1307	1
72B	12T35 x 3/4" Motor Sprocket (1/2" Bore)	9910.1020	1
87	Anodized Threaded Spacer Pipe	Spec Model	4