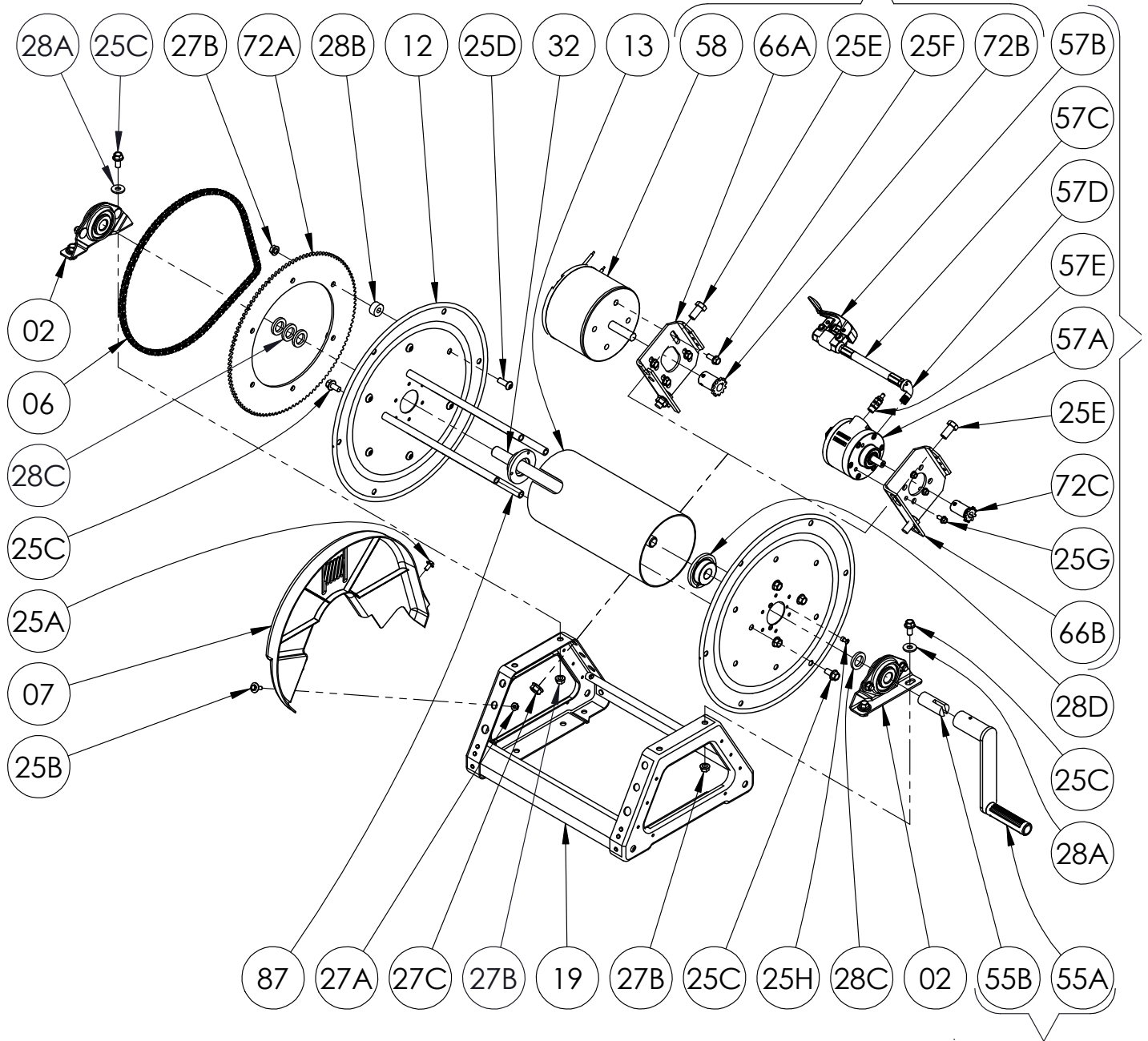


ELECTRIC REWIND ONLY



OPTIONAL REMOVE
 CRANK REWIND

**PARTS LIST
ISO 219
SERIES C1500 POWER REWIND**

**When Ordering Parts
BE SURE TO SPECIFY COMPLETE MODEL NUMBER and SERIAL NUMBER OF REEL
USE PART NUMBER!**

<u>Item No.</u>	<u>Description</u>	<u>Part No.</u>	<u>Quantity</u>
02	1/2" Pipe-Size (0.826" I.D.) Self Aligning Bearing Complete (see ISO-210 for parts)	9902.1200	2
06	Length of #35 Chain - 116 Links (43-1/2" Long) w/ Connecting Link	9912.0028	1
07	Molded Chain Guard - for Motor on Left, per P07A-01720.....	9957.0030	1
07	Molded Chain Guard - for Motor on Right, per P07A-01710 (not shown)	9957.0031	1
12	(17-18) 16-1/2" Dia., 14 GA Disc	9903.0516	2
13	Drum, 6" Dia. Aluminum Pipe (Specify Model)	9905.7112	1
19	Trapezoid Frame Assembly - E-Coated (Specify Model)	9908.1000	1
25A	1/4"-20 x 1/2" Hex Washer Head Taptite Screw (for Chainguard	9904.1070	1
25B	1/4"-20 x 3/4" Hex Washer Head Black Zinc Screw (for Chainguard).....	9904.1071	2
25C	3/8"-16 x 3/4" Spinlock Bolt	9904.2201	12
25D	3/8"-16 x 1" Button Socket Head Cap Screw (for Sprocket Mounting).....	9904.9202	6
25E	1/2"-13 x 1" Hex Head Bolt (for Motorplate)	9904.1402	2
25H	3/16" x 3/8" Blind Pop Rivet - SST (for Disc Washer).....	9949.0212	3
27A	1/4"-20 Small Flange Spinlock Nut - Armor Coat (for Chainguard)	9904.6000	2
27B	3/8"-16 Spinlock Nut.....	9904.6200	10
27C	1/2"-13 Hex Spinlock Nut (for Motorplate).....	9904.5400	2
28A	3/8" Flat Washer	9954.0007	4
28B	Sprocket Spacer Washer (1" O.D. x 0.381" I.D. x 1/2" Thick), per P28A-00760	9954.0015	6
28C	1/2" Hub Spacer Washer - Plated (1-3/8" O.D. x 7/8" I.D. x 3/16" Thick).....	9954.0020	As Req'd.
28D	Disc Washer for 1500, per P28A-01160	9965.0040	2
32	1/2" Straight Iron Pipe Hub Assembly for C1500 Series (Specify Model)	9901.1050	1
72A	112T35 Disc Sprocket - 13-3/8" Dia. (E-Coated).....	9910.1321	1
87	Anodized Aluminum Threaded Spacer Pipe.....	Specify Model	4
<u>ELECTRIC REWIND ONLY</u>			
25F	5/16"-18 x 3/4" Spinlock Bolt (for Electric Motor).....	9904.2101	4
58	AN-227 12V DC Face Mount 1/3 HP 650 RPM Motor.....	9915.0042	1
66A	Electric Motor Mounting Plate for Trapezoid Frame w/ Hardware - E-Coated (includes Item 25F).....	9923.0006	1
72B	11T35 Sprocket - 1-3/4" Long (Plated)	9910.1119	1
<u>AIR REWIND ONLY</u>			
25G	1/4"-20 x 1/2" Hex Head Spinlock Cap Screw (for Air Motor).....	9904.1058	3
57A	#4 AM Gast Air Motor (4 AM NRV-143) w/ Speed Control Muffler (includes Item 57E).....	9918.1122	1
57B	#3420 Schrader Valve for #4 AM Air Motor	9919.0004	1
57C	1/4" MxM NPT x 18" Long Air Hose.....	9919.0007	1
57D	1/4" MxF 90 Degree Street Elbow for #4 AM Air Motor	9950.0013	1
57E	1/4" MNPT Speed Control Muffler for #4 AM Air Motor	9919.0006	1
66B	Air Motor Mounting Plate for Trapezoid Frame w/ Hardware - E-Coated (includes Item 25G).....	9923.0013	1
72C	9T35 Sprocket - 1-3/4" Long (1/2" Bore)	9910.1015	1
<u>OPTIONAL REMOVABLE CRANK REWIND ONLY</u>			
55A	H-18 Steel Hand Crank, 3" Length - E-Coated (see ISO-214 for parts).....	9914.0012	1
55B	1/2" Adapter for Removable Hand Crank for 1500 Series, per P30A-00190.....	9914.0053	1