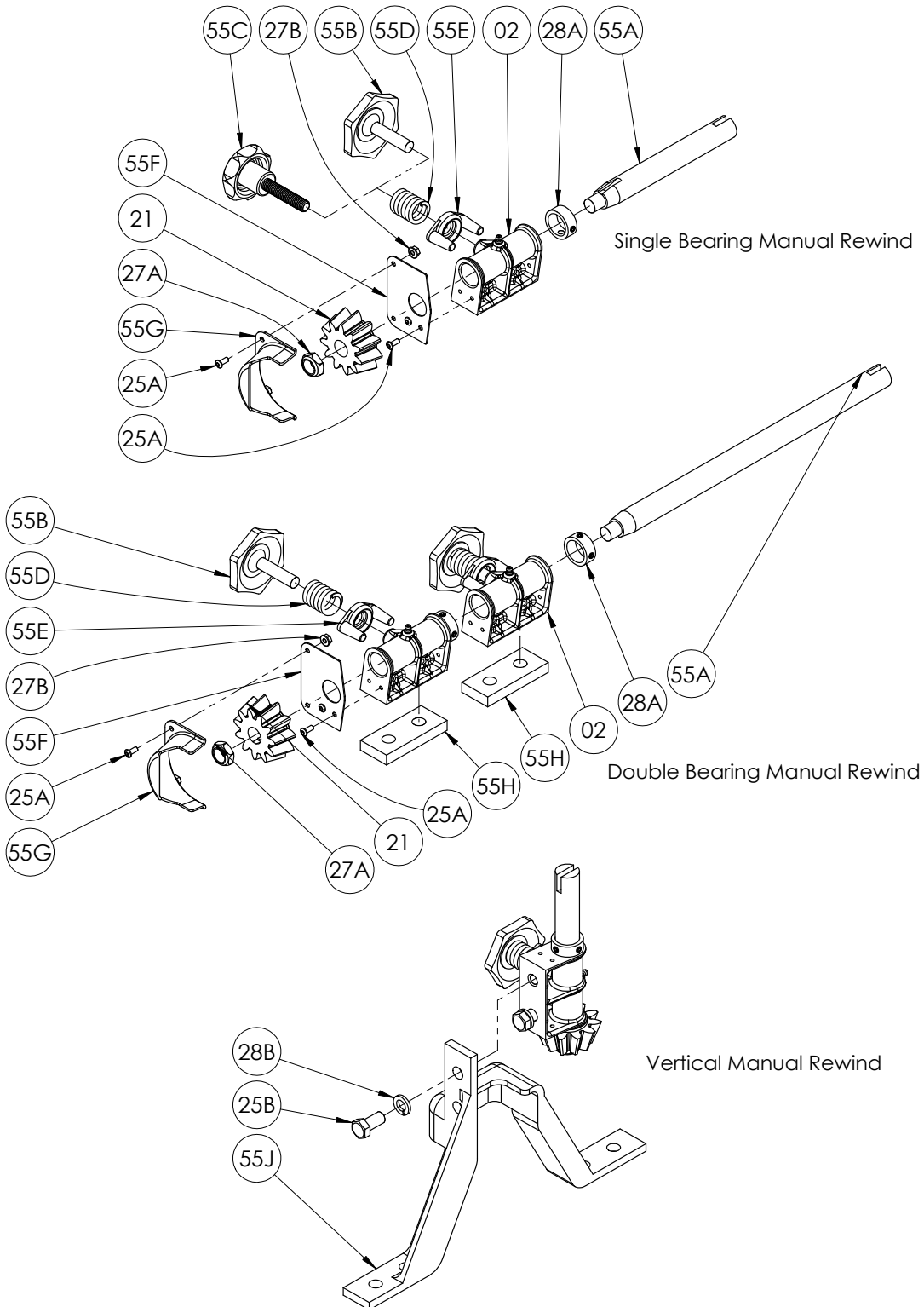


ISO 209
PARTS LIST
MANUAL BEVEL GEAR
REWIND ASSEMBLY



PARTS LIST
ISO 209
Manual Bevel Gear Rewind Assembly

When Ordering Parts
BE SURE TO SPECIFY COMPLETE MODEL NUMBER and SERIAL NUMBER OF REEL
USE PART NUMBER!

<u>Item No.</u>	<u>Description</u>	<u>Part No.</u>	<u>Quantity</u>
<u>SINGLE BEARING MANUAL REWIND ONLY</u>			
-	Manual Rewind Assembly w/ H-27 (for reels up to and including 25-26)	9914.0200	-
-	Manual Rewind Assembly w/ H-29 (for reels over 25-26)	9914.0210	-
-	Special Manual Rewind Assembly w/ H-27 & Nylon Knob (for CR6600 Series)	9914.0213	-
-	Special Manual Rewind Assembly w/ H-29 & Nylon Knob (for CR6600 Series)	9914.0214	-
02	H-2A Pinion Shaft Bearing	9914.0243	1
21	H-27 Pinion Gear (Zinc Alloy) (not shown)	9914.0393	1
21	H-29 Pinion Gear (Zinc Alloy)	9914.0404	1
25A	#10-32 x 7/16" Stainless Steel Button Socket Cap Screw w/ Nylok Patch	9960.0110	4
27A	5/8"-18 SAE Hex Head Nut (ESNA) (for Pinion Shaft)	9904.5600	1
27B	#10-32 Stainless Steel Hex Spinlock Nut	9960.0111	2
28A	PSC-1 Pinion Shaft Collar w/ Set Screws	9914.0351	1
55A	Pinion Shaft (Specify Length)	9914.0250	1
55B	H-30A Brake Wheel (Zinc Alloy)	9914.0413	1
55C	7-Lobe Nylon Knob & Insert (for 6600 Series)	9914.0414	1
55D	Coil (H-31 Brake) Spring	9914.0451	1
55E	H-3 Brake Pad	9914.0433	1
55F	Gear Guard Mounting Plate (Stainless Steel)	9914.0602	1
55G	Gear Guard (Black Polycarbonate)	9914.0600	1
<u>8" DRUM MANUAL REWIND ONLY</u>			
-	Manual Rewind Assembly for 8" Drum (w/ H-27; 8" Shaft) for Series G2000 (not shown)	9914.0220	-
-	Manual Rewind Assembly for 8" Drum (w/ H-27; 8" Shaft) for Series 4100 (not shown)	9914.0221	-
02	H-2A Pinion Shaft Bearing	9914.0243	1
21	H-27 Pinion Gear (Zinc Alloy) (not shown)	9914.0393	1
27A	5/8"-18 SAE Hex Head Nut (ESNA) (for Pinion Shaft)	9904.5600	1
28A	PSC-1 Pinion Shaft Collar w/ Set Screws (QTY 2 needed for G2000)	9914.0351	1
28C	Spacer (1" I.D. x 1-5/8" O.D. x 0.075" Thick) - for H-2A Pinion Shaft Assemblies (not shown)	9954.0035	3
55A	Pinion Shaft (Specify Length)	9914.0250	1
55B	H-30A Brake Wheel (Zinc Alloy)	9914.0413	1
55D	Coil (H-31 Brake) Spring	9914.0451	1
55E	H-3 Brake Pad	9914.0433	1
<u>DOUBLE BEARING MANUAL REWIND ONLY</u>			
-	Double Bearing Manual Rewind Assembly w/ H-29 (Specify Model)	9914.0211	-
02	H-2A Pinion Shaft Bearing	9914.0243	2
21	H-29 Pinion Gear (Zinc Alloy)	9914.0404	1
25A	#10-32 x 7/16" Stainless Steel Button Socket Cap Screw w/ Nylok Patch	9960.0110	4
27A	5/8"-18 SAE Hex Head Nut (ESNA) (for Pinion Shaft)	9904.5600	1
27B	#10-32 Stainless Steel Hex Spinlock Nut	9960.0111	2
28A	PSC-1 Pinion Shaft Collar w/ Set Screws	9914.0351	2
55A	Pinion Shaft (Specify Length)	9914.0250	1
55B	H-30A Brake Wheel (Zinc Alloy)	9914.0413	2
55D	Coil (H-31 Brake) Spring	9914.0451	2
55E	H-3 Brake Pad	9914.0433	2
55F	Gear Guard Mounting Plate (Stainless Steel)	9914.0602	1
55G	Gear Guard (Black Polycarbonate)	9914.0600	1
55H	H-2A Bearing Spacer, per KDF1208 (1/2" x 1-1/2" x 3-1/2") - for 3"+ reels	9914.0248	2
<u>VERTICAL MANUAL REWIND ASSEMBLY ONLY</u>			
-	VR-2 Vertical Rewind Assembly w/H-27 (for reels up to and including 25-26)	9914.0223	-
25B	1/2"-13 x 1" Hex Head Bolt (for Vertical Rewind Assembly)	9904.1402	2
28B	1/2" Split Lock Washer (Armor Coat) (for Vertical Rewind Assembly)	9954.0030	2
55J	Vertical Rewind Bracket, per P55A-00050	9914.0233	1