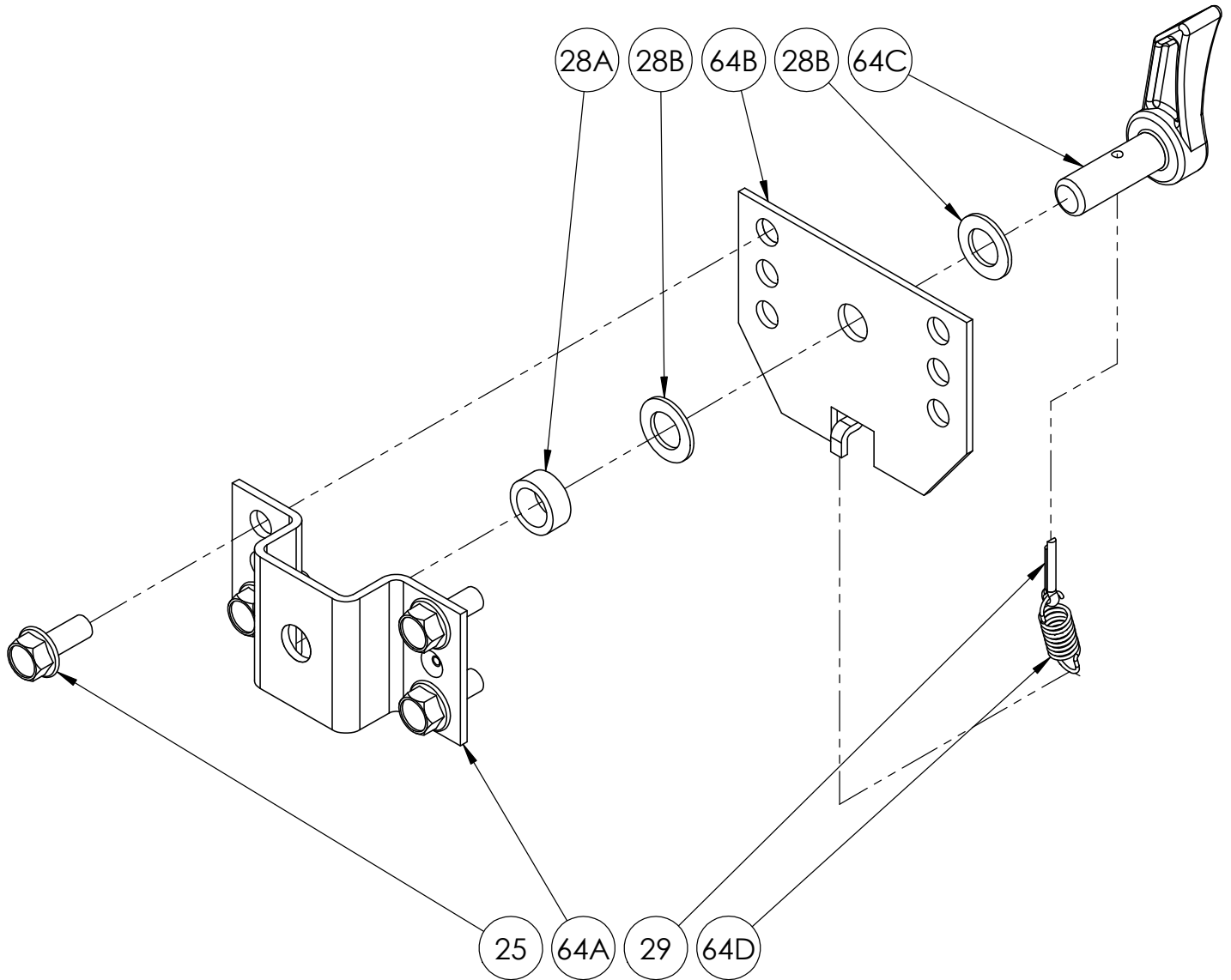


**N-SERIES RATCHET
PAWL ASSEMBLY**



**PARTS LIST
ISO 207
N-Series Ratchet Pawl Assembly**

**When Ordering Parts
BE SURE TO SPECIFY COMPLETE MODEL NUMBER and SERIAL NUMBER OF REEL
USE PART NUMBER!**

<u>Item #</u>	<u>Description</u>	<u>Part #</u>	<u>Qty</u>
25	5/16"-18 x 3/4" Thread Cutting Hex Head Bolt	9958.0055	4
28A	N-Series Ratchet Pawl Spacer (3/4" O.D. x 17/32" I.D. x .317" Thick), per P28A-01080	9922.0025	1
28B	Stainless Steel Washer for Ratchet Assembly (7/8" O.D. x 33/64" I.D. x 1/16" Thick)	9922.0061	2
29	1/8" x 1" Stainless Steel Cotter Pin	9922.0024	1
64A	Ratchet Pawl Housing (Outer).....	9922.0026	1
64A	304 Stainless Steel Ratchet Pawl Housing (Outer).....	9922.0044	1
64B	Ratchet Pawl Housing (Inner).....	9922.0027	1
64B	304 Stainless Steel Ratchet Pawl Housing (Inner).....	9922.0043	1
64C	Right Hand Ratchet Pawl (304 Stainless Steel), per P64A-00242	9922.0302	1
64C	Left Hand Ratchet Pawl (304 Stainless Steel), per P64A-00241 (for Reverse Springs only) (not shown)	9922.0301	1
64D	Ratchet Locking Spring	9922.0008	1