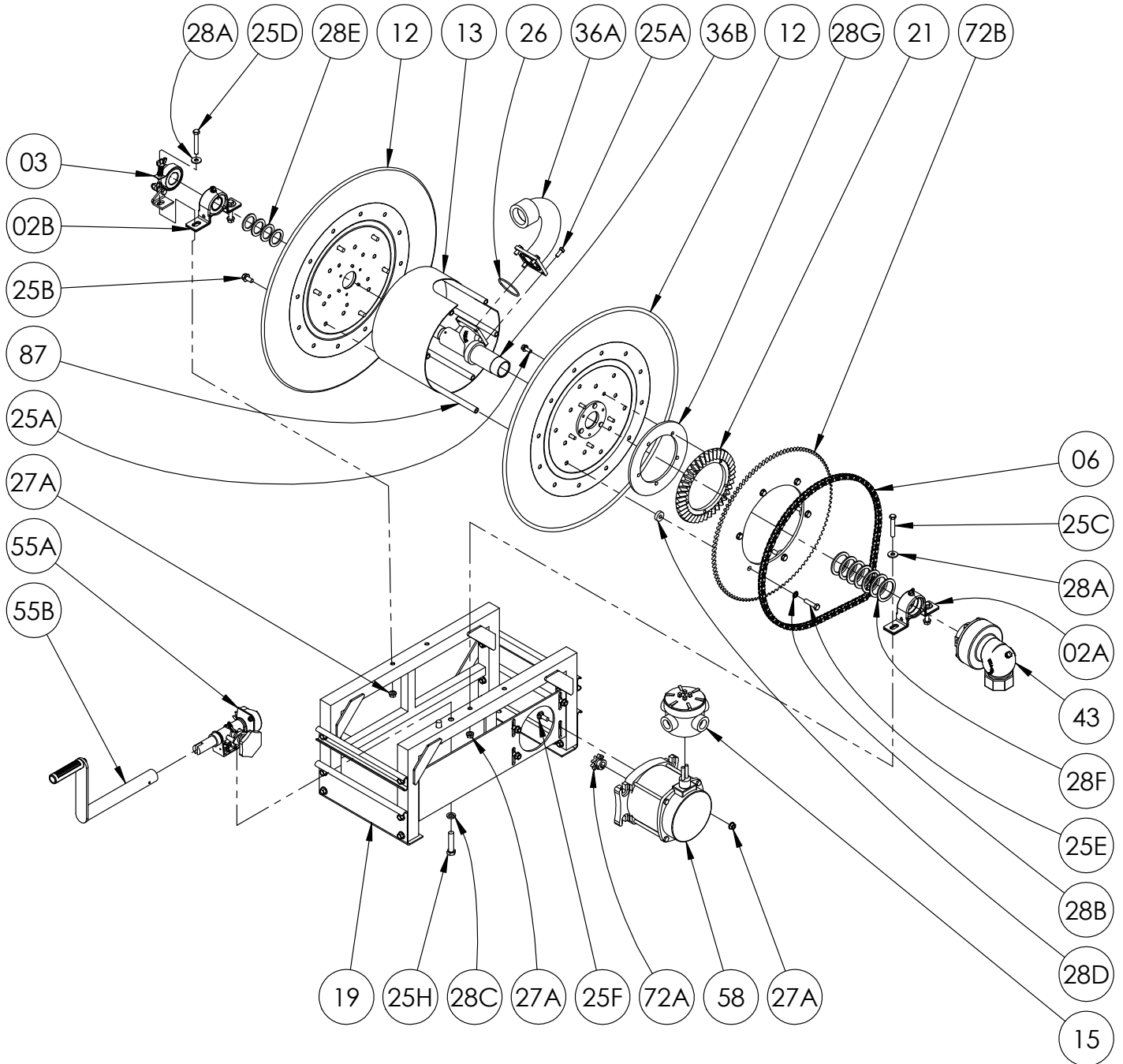


ISO 204
PARTS LIST

**PB Series - Aluminum
Square Tubing Frame
Manual or Power Rewind
(≤ 36" disc size)**



**PARTS LIST
ISO 204**

PB Series - Aluminum Square Tubing Frame Manual or Power Rewind (≤ 36" disc size)

**When Ordering Parts
BE SURE TO SPECIFY COMPLETE MODEL NUMBER and SERIAL NUMBER OF REEL
USE PART NUMBER!**

<u>Item #</u>	<u>Description</u>	<u>Part No.</u>	<u>Qty</u>
02A	1-1/2" Pipe-Size (1.904" I.D.) Split Bronze Bearing Complete, 304 SST (see ISO-211 for parts).....	9902.1622	1
02B	1" Pipe-Size (1.287" I.D.) Bronze/Aluminum Bearing Complete, 304 SST (see ISO-211 for parts).....	9902.1640	1
03	Band Brake Assembly (Strap Bearing Style) w/ "L" Bracket, per P03A-00210 (see ISO-212 for parts)	9947.0099	1
06	#40 Chain	Specify Model	1
12	Aluminum Disc Assembly (includes Disc Washer) (Specify Front or Back, Polished or Unpolished) ..	Specify Model	2
13	Drum, 10-1/2" Dia. 0.125" Aluminum - Unpolished (Specify Model).....	9905.5132	1
15	Red Dot 5-Port Round Junction Box w/ Wire Nut, Connector, and Plugs	9917.0060	1
19	1-1/2" Aluminum Square Tubing Frame Assembly (Specify Polished or Unpolished).....	Specify Model	1
21	H-26 Ring Gear	9914.0372	1
21	H-28 Ring Gear (for Manual Rewind reels) (not shown)	9914.0382	1
25A	5/16"-18 x 3/4" Stainless Steel Wide Flanged Bolt.....	9960.0002	9
25B	3/8"-16 x 3/4" Stainless Steel Spinlock Bolt	9960.0009	6 or 12
25C	3/8"-16 x 2-1/4" Stainless Steel Hex Head Bolt.....	9960.0014	3 or 4
25D	3/8"-16 x 2-1/2" Stainless Steel Hex Head Bolt (for Brake Bracket).....	9960.0013	1
25E	3/8"-16 x 1-1/2" Stainless Steel Hex Head Bolt (for 104T40 Sprocket).....	9960.0015	6
25F	3/8"-16 x 1" Stainless Steel Carriage Bolt	9960.0100	4
25G	3/8"-16 x 1" Stainless Steel Button Socket Cap Screw (for 134T40 Sprocket) (not shown)	9960.0093	6
25H	1/2"-13 x 2-1/4" Stainless Steel Hex Head Bolt (for Manual Rewind)	9960.0074	2
26	2-5/8" (BUNA) O-Ring for 1-1/2" Riser	9965.0028	1
27A	3/8"-16 Stainless Steel Spinlock Nut.....	9960.0091	8
27B	3/8"-16 Stainless Steel Hex Nut (for 134T40 Sprocket) (not shown)	9960.0007	6
28A	3/8" Stainless Steel Flat Washer	9960.0010	4
28B	3/8" Internal Tooth Lockwasher (for 104T40 Sprocket)	9954.0095	6
28C	1/2" Stainless Steel Lock Washer (for Manual Rewind)	9960.0017	2
28D	EH-765 Sprocket Spacer (1" O.D. x 5/16" Thick w/ 3/8" Hole).....	9954.0017	6
28E	1" Hub Spacer Washer - 316 SST (1-7/8" O.D. x 1-5/16" I.D. x 1/8" Thick)	9960.0061	As Req'd.
28F	1-1/2" Hub Spacer Washer - 316 SST (2.5" O.D. x 1.94" I.D. x 0.125" Thick)	9960.0062	As Req'd.
28G	Special 1/4" Thick Aluminum Backing Plate for H-26 Ring Gear.....	9914.0581	1
29	Woodruff Key #9 (3/16" x 3/4") (for Explosion Proof Motor and Strap Brake) (not shown)	9916.008	1 or 2
36A	1-1/2" Iron Pipe Riser, Only (E-Coated) w/ O-Ring (includes Item 26) (Specify Riser Fitting)	9901.3767	1
36B	1-1/2" Flange Iron Pipe Hub, Only (E-Coated Tee, SST Dead End) (Specify Model/Serial Number).....	9901.3641	1
43	1-1/2" 90 Degree FxF Steel 350 PSI Full Circle Swivel Joint.....	9930.0531	1
55A	Manual Rewind Assembly w/ H-27 (see ISO-209 for parts)	9914.0200	1
55A	Manual Rewind Assembly w/ H-29 (for Manual Rewind reels) (see ISO-209 for parts) (not shown) ...	9914.0210	1
55B	Stainless Steel H-18 Hand Crank - 10" Length (see ISO-214 for parts)	9914.0014	1
58	SX-743 12V DC Flange 2/3 HP 500 RPM Explosion Proof Motor (IP68 Rated)	9915.0010	1
72A	9T40 Motor Sprocket - 1-5/16" Long (Plated).....	9910.0917	1
72B	104T40 Disc Sprocket - 16.85" Dia. (Chrome Silver).....	9910.3121	1
72B	134T40 Disc Sprocket - 21.62" Dia. (Chrome Silver) (not shown)	9910.3125	1
87	Anodized Aluminum Threaded Spacer Pipe.....	Specify Model	6