



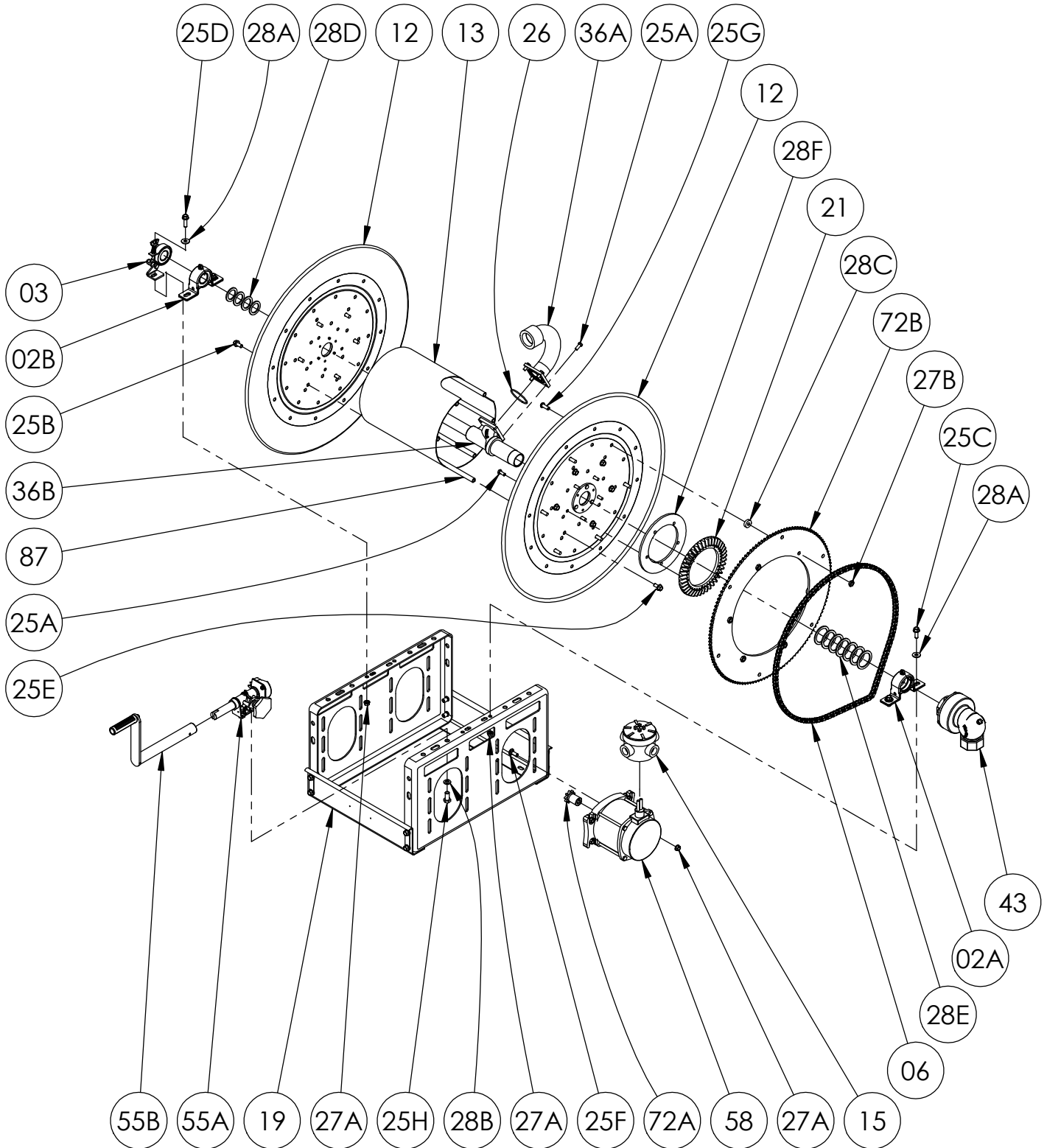
Hannay Reels®
The reel leader.

Hannay Reels, Inc.
553 State Route 143, Westerlo, NY 12193
www.hannay.com
Email: reels@hannay.com

Phone 1-518-797-3791
Toll Free 1-877-GO-REELS (467-3357)
Fax 1-800-REELING (733-5464)
Int'l Fax 1-518-797-3259

ISO 201
PARTS LIST

PB Series - Stainless Steel
Manual or Power Rewind
Pressed Frame (≤ 30" disc size)



**PARTS LIST
ISO 201**

PB Series - Stainless Steel Manual or Power Rewind Pressed Frame (≤ 30" disc size)

**When Ordering Parts
BE SURE TO SPECIFY COMPLETE MODEL NUMBER and SERIAL NUMBER OF REEL
USE PART NUMBER!**

<u>Item #.</u>	<u>Description</u>	<u>Part No.</u>	<u>Qty</u>
02A	1-1/2" Pipe-Size (1.904" I.D.) 304 SST Split Bronze Bearing (see ISO-211 for parts)	9902.1622	1
02B	1" Pipe-Size (1.287" I.D.) 304 SST Bronze Bearing (see ISO-211 for parts)	9902.1640	1
03	Band Brake Assembly (Strap Bearing Style) w/ L-Bracket (see ISO-212 for parts)	9947.0099	1
06	#40 Chain	Specify Model	1
12	Stainless Steel Disc Assembly (includes Disc Washer) (Specify Front or Back).....	Specify Model	2
13	Drum, 10-1/2" Dia. Stainless Steel (Specify Model)	9905.3134	1
15	Red Dot 5-Port Round Junction Box Complete.....	9917.0060	1
19	Stainless Steel Pressed Frame Assembly	Specify Model	1
21	H-26 Ring Gear	9914.0372	1
21	H-28 Ring Gear (for Manual Rewind reels) (not shown)	9914.0382	1
25A	5/16"-18 x 3/4" Stainless Steel Wide Flanged Bolt.....	9960.0002	9
25B	3/8"-16 x 3/4" Stainless Steel Spinlock Bolt	9960.0009	6
25C	3/8"-16 x 1" Stainless Steel Spinlock Bolt	9960.0072	3 or 4
25D	3/8"-16 x 1-1/2" Stainless Steel Hex Head Bolt (for Brake Bracket).....	9960.0015	1
25E	3/8"-16 x 3/4" Stainless Steel Spinlock Bolt (for 134T40 Sprocket)	9960.0009	6
25E	3/8"-16 x 1-1/2" Stainless Steel Hex Head Bolt (for 104T40 Sprocket) (not shown).....	9960.0015	6
25F	3/8"-16 x 1" Stainless Steel Carriage Bolt (for Motor Mounting).....	9960.0100	4
25G	3/8"-16 x 1" 18-8 Stainless Steel Button Socket Cap Screw (for 134T40 Sprocket).....	9960.0093	6
25H	1/2"-13 x 1" Stainless Steel Hex Head Bolt	9960.0016	2
26	2-5/8" (BUNA) O-Ring for 1-1/2" Riser	9965.0028	1
27A	3/8"-16 Stainless Steel Spinlock Nut.....	9960.0091	8
27B	3/8"-16 Stainless Steel Hex Nut (for 134T40 Sprocket)	9960.0007	6
28A	3/8" Stainless Steel Flat Washer	9960.0010	4
28B	1/2" Stainless Steel Lock Washer.....	9960.0017	2
28C	EH-765 Special Spacer for Disc Sprocket (1" x 5/16" w/ 3/8" Hole).....	9954.0017	6
28D	1" Hub Spacer Washer - 316 Stainless Steel (1-7/8" O.D. x 1-5/16" I.D. x 1/8" Thick)	9960.0061	As Req'd.
28E	1-1/2" Hub Spacer Washer - 316 Stainless Steel (2.5" O.D. x 1.94" I.D. x 0.125" Thick)	9960.0062	As Req'd.
28F	Special 1/4" Thick Aluminum Backing Plate for H-26	9914.0581	1
28G	3/8" Lock Washer, Internal Tooth (for 104T40 Sprocket) (not shown)	9954.0095	6
29	Woodruff Key #9 (3/16" x 3/4") (for Explosion Proof Motor and Strap Brake) (not shown)	9916.0080	1 or 2
36A	1-1/2" Iron Pipe Riser, only w/ O-Ring (Specify Riser Fitting) (includes Item 26).....	9901.3767	1
36B	1-1/2" Flange Iron Pipe Hub, only - E-Coated Tee w/ SST Dead End (Specify Model).....	9901.3641	1
43	1-1/2" 90 Degree FxF Steel 350 PSI Full Circle Swivel Joint	9930.0531	1
55A	Manual Rewind Assembly w/ H-27 (see ISO-209 for parts)	9914.0200	1
55A	Manual Rewind Assembly w/ H-29 (for Manual Rewind reels) (see ISO-209 for parts) (not shown) .	9914.0210	1
55B	Stainless Steel H-18 Crank Handle - 10" Length (see ISO-214 for parts).....	9914.0014	1
58	SX-743 12V DC Flange 2/3 HP 500 RPM Explosion Proof Motor (IP68 Rated)	9915.0010	1
72A	9T40 Motor Sprocket - 1-5/16" Long (Plated).....	9910.0917	1
72B	134T40 Disc Sprocket - 21.62" Dia. (Chrome Silver)	9910.3125	1
72B	104T40 Disc Sprocket - 16.85" Dia. (Chrome Silver) (not shown)	9910.3121	1
87	Anodized Aluminum Threaded Spacer Pipe.....	Specify Model	6