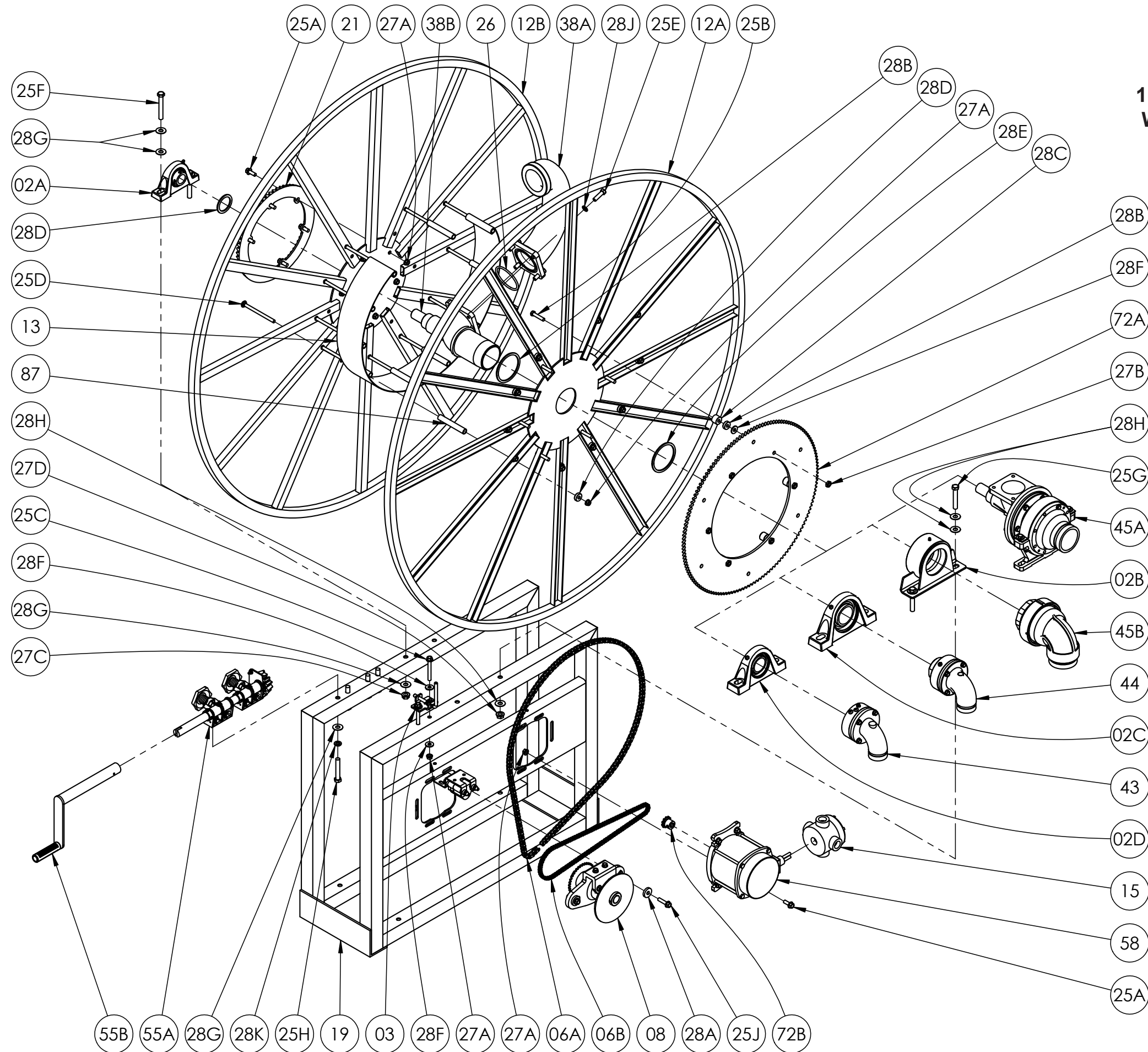


ISO 197
PARTS LIST

SERIES 5000
1-1/2" thru 3" SINGLE
WRAP HOSE REELS





Hannay Reels, Inc.
553 State Route 143, Westerlo, NY 12193
www.hannay.com
Email: reels@hannay.com

Phone 1-518-797-3791
Toll Free 1-877-GO-REELS (467-3357)
Fax 1-800-REELING (733-5464)
Int'l Fax 1-518-797-3259

**ISO 197
PARTS LIST**

**SERIES 5000
1-1/2" thru 3" SINGLE
WRAP HOSE REELS**

**PARTS LIST
ISO 197**

SERIES 5000 1-1/2" thru 3" SINGLE WRAP HOSE REELS

**When Ordering Parts
BE SURE TO SPECIFY COMPLETE MODEL NUMBER and SERIAL NUMBER OF REEL
USE PART NUMBER!**

**When Ordering Parts
BE SURE TO SPECIFY COMPLETE MODEL NUMBER and SERIAL NUMBER OF REEL
USE PART NUMBER!**

Item #	Description	Part No.	Quantity
02A	1-1/4" Pillow Block Bearing	9902.0300	1
02B	3-1/2" I.D. Fabricated Bearing Assembly (for 3" reels only)	9902.2403	1
02C	2-3/8" Pillow Block Bearing (for 2" reels only)	9902.0500	1
02D	1-7/8" Pillow Block Bearing (for 1-1/2" reels only)	9902.0400	1
03	PL-1 Pinlock (E-Coated).....	9965.0030	1
06A	#40 Chain (for Disc Sprocket)	Specify Model	1
06B	#35 Chain (for Clutch/Reduction Unit).....	Specify Model	1
08	Reduction Unit (see ISO-155 for parts)	Specify Model	1
08	Manual Clutch & Reduction Unit (see ISO-160 for parts) (not shown).....	Specify Model	1
08	Electric Clutch & Reduction Unit (see ISO-249 for parts) (not shown).....	Specify Model	1
12A	Front Disc (Spoked).....	Specify Model	1
12B	Back Disc (Spoked).....	Specify Model	1
13	Drum (Wrap-Around Style).....	Specify Model	1
15	Red Dot 5-Port Round Junction Box Complete w/ Connectors	9917.0060	1
19	5000 Series Frame Assembly.....	Specify Model	1
21	H-28 Ring Gear	9914.0382	1
25A	3/8"-16 x 1" Spinlock Bolt	9904.2202	10
25B	3/8"-16 x 2" Hex Head Cap Screw	9904.1206	6
25C	3/8"-16 x 2-3/4" Spinlock Bolt	9904.2262	2
25D	3/8"-16 Carriage Bolt with Nut	Specify Model	11
25E	7/16"-14 x 1-1/2" Hex Head Bolt (for 3" reels only)	9904.1304	4
25E	3/8"-16 x 1-1/4" Hex Head Cap Screw (for 2" reels only) (not shown).....	9904.1203	4
25E	5/16"-18 x 1" Hex Head Cap Screw (for 1-1/2" reels only) (not shown).....	9904.1102	4
25F	1/2"-13 x 3-1/2" Hex Head Bolt.....	9904.1409	2
25G	1/2"-13 x 3-1/2" Hex Head Bolt (for 3" Fabricated Bearing)	9904.1409	2
25G	1/2"-13 x 4" Hex Head Bolt (for I-Hub & 1-1/2" Pillow Block Bearing) (not shown)	9904.1410	2
25G	5/8"-11 x 4-1/2" Hex Head Bolt (for 2" Pillow Block Bearing) (not shown).....	Specify Model	2
25H	1/2"-13 x 3" Hex Head Bolt.....	9904.1408	4
25J	3/8"-16 x 1-1/2" Spinlock Bolt	9904.2204	2
25J	3/8"-16 x 3" Hex Head Cap Screw (not shown).....	9904.1208	2
26	3-3/4" (BUNA) O-Ring (for 3" reels only).....	9965.0025	1
26	2-5/8" (BUNA) O-Ring (for 1-1/2" & 2" reels) (not shown).....	9965.0028	1
27A	3/8"-16 Spinlock Nut	9904.6200	18
27B	3/8"-16 Hex Jam Nut	9965.0012	6
27C	1/2"-13 Hex Spinlock Nut	9904.5400	2
27D	1/2"-13 Spinlock Nut (for 3" Fabricated Bearing, I-Hub, & 1-1/2" Pillow Block Bearing).....	9904.5400	2
27D	5/8"-11 Heavy Hex Nut - ZYD (for 2" Pillow Block Bearing) (not shown)	9904.5607	2

Item #	Description	Part No.	Quantity
28A	3/8" Flat Washer	9954.0007	2
28A	Spacer Washer for Reduction Unit Mounting Bolts (1.25" O.D. x 0.406" I.D. x 1/4" Thick) (not shown).....	9954.0047	2
28B	EH-765 Special Sprocket Spacer (1" O.D. x .385" I.D. x 5/16" Thick).....	9954.0017	17
28C	Sprocket Spacer Washer, per P28A-00070 (1" O.D. x .381" I.D. x 3/4" Thick)	9922.0033	6
28D	1-1/2" Hub Spacer Washer - Plated (2.5" O.D. x 1.920" I.D. x 0.125" Thick)	9954.0021	As Req'd.
28E	3" Hub Spacer Washer (4" O.D. x 3.5" I.D. x 1/8" Thick) (for 3" reels only)	9954.0018	As Req'd.
28E	1-1/2" Hub Spacer Washer - Plated (2.5" O.D. x 1.920" I.D. x 0.125" Thick) (for 1-1/2" reels only) (not shown)....	9954.0021	As Req'd.
28E	2" Hub Spacer Washer (for 2" reels only) (not shown).....	9954.0023	As Req'd.
28F	3/8" Flat Washer	9954.0007	10
28G	1/2" Flat Washer	9954.0008	10
28H	1/2" Flat Washer (for 3" Fabricated Bearing, I-Hub, & 1-1/2" Pillow Block Bearing)	9954.0008	6
28H	5/8" Flat Washer (for 2" Pillow Block Bearing) (not shown).....	9954.0004	6
28J	7/16" Lock Washer (for 3" Risers)	9954.0029	4
28J	5/16" Lock Washer (for 1-1/2" Risers) (not shown)	Specify Model	4
28J	3/8" Lock Washer (for 2" Risers) (not shown).....	Specify Model	4
28K	1/2" Split Lock Washer (Armor Coat).....	9954.0030	4
28L	Clutch/Reduction Unit Spacer (2" O.D. x 1/32" Thick) (not shown).....	9954.0048	8
28M	Clutch/Reduction Unit Spacer (2" O.D. x 1-1/4" Thick) (not shown).....	9954.0049	2
28N	E-Coated Backing Plate for H-28 Ring Gear (Specify Model) (not shown)	9914.0582	1
29	Woodruff Key #9 (3/16" x 3/4") for Motor Sprocket (not shown).....	9916.0080	1
38A	3" FNPT Aluminum Riser (for 20" Drum)	9901.7462	1
38A	1-1/2" Iron Pipe Riser (Specify Model & Riser Fitting) (not shown).....	9901.3760	1
38A	1-1/2" 304 SST Riser (Specify Model & Riser Fitting) (not shown)	Specify Model	1
38A	2" FIPT Aluminum Riser (not shown).....	9901.5762	1
38B	3" Flanged Aluminum Hub Only (Specify Model)	9901.7842	1
38B	1-1/2" Flanged Iron Pipe Hub Only (Specify Model) (not shown).....	9901.3640	1
38B	1-1/2" Flanged Aluminum Hub Only (Specify Model) (not shown)	9901.3642	1
38B	2" Flanged Aluminum Hub Only (Specify Model) (not shown).....	9901.5642	1
43	WHJ-1590-AL Swivel Joint w/ BUNA Seals (1-1/2" 90° FxFxVic Aluminum 600 PSI).....	9930.4312	1
43	WHJ-1590 Swivel Joint w/ BUNA Seals (1-1/2" 90° FxFxVic Ductile 1000 PSI) (not shown)	9930.4210	1
44	WHJ-290 Swivel Joint w/ VITON Seals (2" Fx1.5" Fx2" Vic 90 Degree Ductile 600 PSI)	9931.4210	1
44	2" 90° Fx2" Vic Aluminum 150 PSI OPW Swivel Joint w/ BUNA Seals (not shown)	9931.6302	1
45A	3" I-Hub (Straight Outlet w/ Victaulic Inlet)	9901.7931	1
45B	3" 90° FxFxVic Aluminum 150 PSI OPW Swivel Joint w/ BUNA Seals	9933.6302	1
55A	Double Bearing Manual Rewind Assembly (see ISO-209 for parts).....	9914.0211	1
55B	H-18 Steel Hand Crank - E-Coated (Standard 10" Length) (see ISO-214 for parts).....	9914.0011	1
56	Heavy-Duty Tie Wrap (for strapping hose on reel) (not shown)	9965.0088	1
58	SX-743 12V DC Flange 2/3 HP 500 RPM Explosion Proof Motor (IP68 Rated)	9915.0010	1
72A	146T40 Disc Sprocket, 23-1/2" Dia. (E-Coated).....	9910.3128	1
72B	11T35 x 3/4" Long Motor Sprocket	9910.1116	1
87	3/8" Aluminum Spacer Pipe (Specify Model).....	9904.3200	11