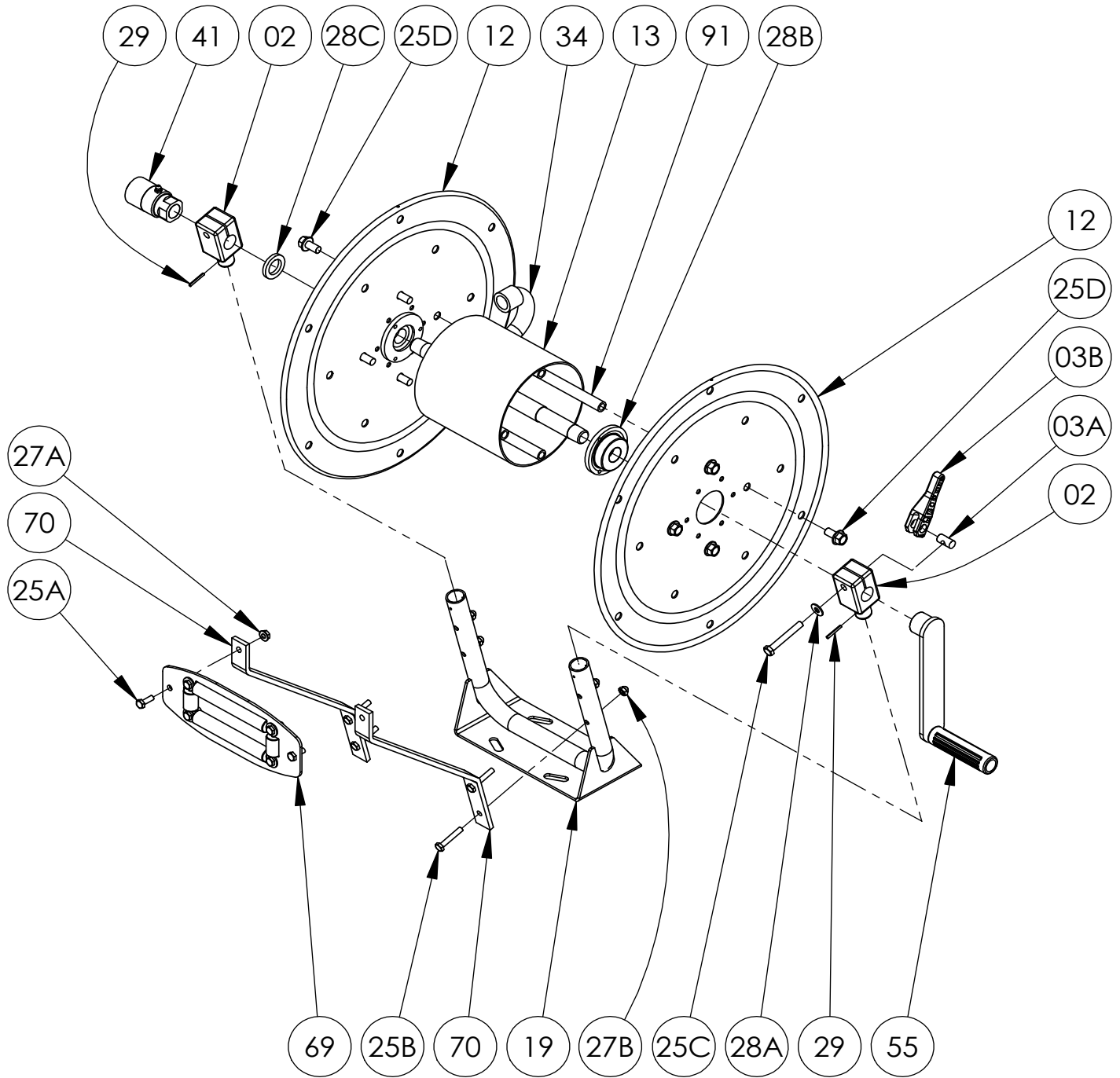


**ISO 193**  
**PARTS LIST**  
**PRESSURE WASH REEL**  
**(MODEL PW-2)**



**PARTS LIST  
ISO 193  
PRESSURE WASH REEL (MODEL PW-2)**

**When Ordering Parts  
BE SURE TO SPECIFY COMPLETE MODEL NUMBER and SERIAL NUMBER OF REEL  
USE PART NUMBER!**

<u>Item #</u>	<u>Description</u>	<u>Part #</u>	<u>Qty</u>
02	1/2" Pipe-Size (0.826" I.D.) PW-2 Split Bearing .....	9902.1250	2
03A	Brass Barrel Nut for Cam Lock Brake .....	9947.0133	1
03B	Cam Lock Lever .....	9947.0132	1
12	(17-18) 16.5" Dia. Disc 14 GA Steel (Specify PW-2).....	9903.0516	2
13	Drum, 6" Dia. Aluminum Pipe (Specify PW-2).....	9905.7112	1
19	PW-2 Frame Assembly, per P19A-00070.....	9908.1025	1
25A	1/4"-20 x 3/4" Hex Head Cap Screw .....	9904.1001	2
25B	1/4"-20 x 1-1/2" Hex Head Bolt.....	9904.1004	4
25C	5/16"-18 x 2-1/4" Hex Head Bolt (for Cam Lock).....	9904.1107	1
25D	3/8"-16 x 3/4" Spinlock Bolt .....	9904.2201	8
27A	1/4"-20 Small Flange Spinlock Nut (Armor Coat).....	9904.6000	2
27B	1/4"-20 Acorn Nut .....	9958.0037	4
28A	1/4" Flat Washer (for Cam Lock) .....	9954.0005	1
28B	Disc Washer, per P28A-01160.....	9965.0040	2
28C	1/2" Hub Spacer Washer - Plated (1-3/8" O.D. x 7/8" I.D. x 3/16" Thick).....	9954.0020	As Req'd.
29	1/8" x 1" Roll Pin (for attaching Bearings) .....	9958.0085	2
34	1/2" Welded Iron Pipe Hub Assembly - Schedule 80 Risers (Specify PW-2) .....	9901.0611	1
41	1/2" 90 Degree FxF Steel 5000 PSI Full Flow Super Swivel Joint (AFLAS) Zerk Fitting (HR41-0001).....	9927.8551	1
55	Hand Crank Assembly - E-Coated (see ISO-255 for parts).....	9914.0021	1
69	PW-2R Roller Assembly Complete, per A69A-00190.....	9939.0081	1
70	Roller Mounting Bracket Upright for PW-2, per P70A-00770 .....	9941.0211	2
91	6" Long Anodized Aluminum Threaded Spacer Tube.....	9904.0312	4