



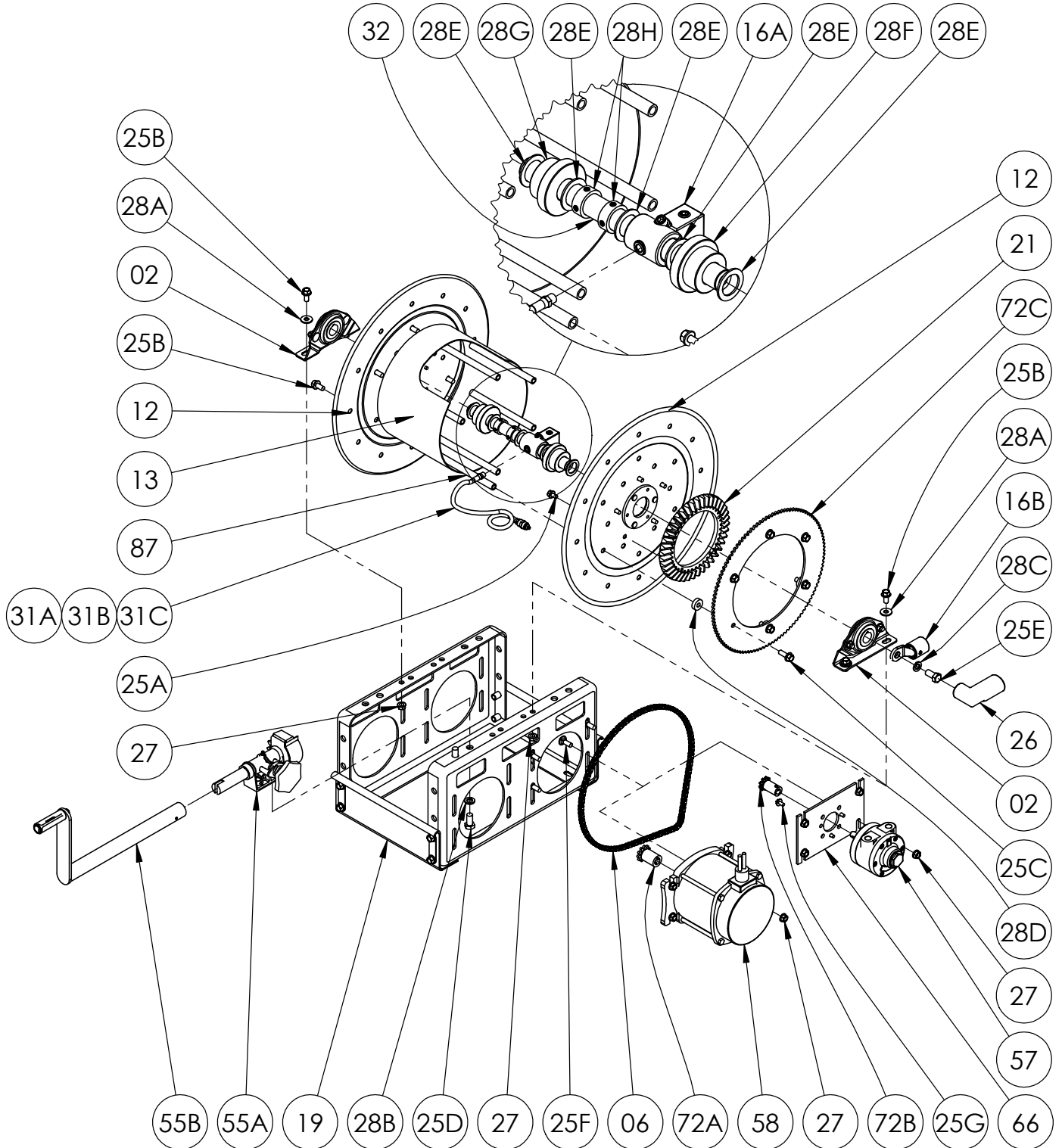
**Hannay Reels®**  
The reel leader.

Hannay Reels, Inc.  
553 State Route 143, Westerlo, NY 12193  
www.hannay.com  
Email: reels@hannay.com

Phone 1-518-797-3791  
Toll Free 1-877-GO-REELS (467-3357)  
Fax 1-800-REELING (733-5464)  
Int'l Fax 1-518-797-3259

**ISO 188**  
PARTS LIST

**SERIES WCR**



**PARTS LIST  
ISO 188  
Series WCR**

**When Ordering Parts  
BE SURE TO SPECIFY COMPLETE MODEL NUMBER and SERIAL NUMBER OF REEL  
USE PART NUMBER!**

<b>Item No.</b>	<b>Description</b>	<b>Part No.</b>	<b>Quantity</b>
02	1" Self Aligning Bearing Assembly, w/ Delrin Bearing (See ISO-210 for Parts).....	9902.1401	2
06	Chain, #35 .....	Specify Model	1
12	Disc Assembly E-Coated .....	Spec. Model/Serial #	2
13	Drum, 10-1/2" Dia. ....	9905.3131	1
16A	Single Conductor, 400 AMP, Roto-Ground Head.....	9942.0172	1
16B	Offset Connector, #2-Of.....	9955.0025	1
19	Frame Assembly.....	Spec Model	1
21	Ring Gear, H-26.....	9914.0372	1
25A	5/16"-18 x 1/2" Spinlock Bolt .....	9904.2158	5
25B	3/8"-16 x 3/4" Spinlock Bolt .....	9904.2201	10
25C	3/8"-16 x 1" Spinlock Bolt .....	9904.2202	6
25D	1/2"-13 x 1" Hex Head Bolt.....	9904.1402	2
25E	1/2"-13 x 1" Hex Head Bolt - Silicon Bronze.....	9955.0222	1
25F	3/8"-16 x 1" Carriage Bolt.....	9904.0200	4
25G	1/4" - 20 x 1/2" Spinlock Bolt (For Air Motor Mounting) .....	9904.1058	3
26	Insulating Cable Cover .....	9955.0202	1
27	3/8"-16 Spinlock Nut.....	9904.6200	8
28A	3/8" Flat Washer .....	9954.0007	4
28B	1/2" Lock Washer .....	9954.0030	2
28C	1/2" Lock Washer - Silicon Bronze .....	9955.0221	1
28D	Sprocket Spacer .....	9954.0017	6
28E	Spacer - 1" I.D. x 1-5/8" O.D. x 1/32" THK .....	9954.0035	6
28F	Delrin Insulating Collar for Drive End (Per P28A-00150) .....	9955.0197	1
28G	Delrin Insulating Collar for Dead End (Per P28A-00160) .....	9955.0198	1
28H	Collar & Set Screw .....	9914.0351	2
31A	Grease Whip (18" Long).....	9965.0100	1
31B	1/8" Female Coupling .....	9955.0302	1
31C	1/8" FNPT Grease Zerk.....	9965.0101	1
32	Brass Hub.....	9955.0060	1
55A	Horizontal Manual Rewind Assembly (H-27 Pinion) (See ISO-209 for Parts).....	9914.0200	1
55B	H-18 Crank Handle (10" Length) Complete (See ISO-214 for Parts).....	9914.0011	1
57	#4 Gast Air Motor.....	9918.1122	1
58	SX-001 12V DC 1/2 HP Explosion Proof Motor.....	9915.0003	1
66	Motor Mounting Plate (For Air Motor) .....	9923.0009	1
72A	11T35 Motor Sprocket, 1-5/16" Long (For Electric Motor).....	9910.1118	1
72B	9T35 Motor Sprocket, 3/4" Long (For Air Motor) .....	9910.1010	1
72B	112T35 Disc Sprocket (19-21 Discs).....	9910.1321	1
72B	138T35 Disc Sprocket (23-24 and 25-26 Discs).....	9910.1423	1
87	Anodized Threaded Spacer Pipe.....	Specify Model	6