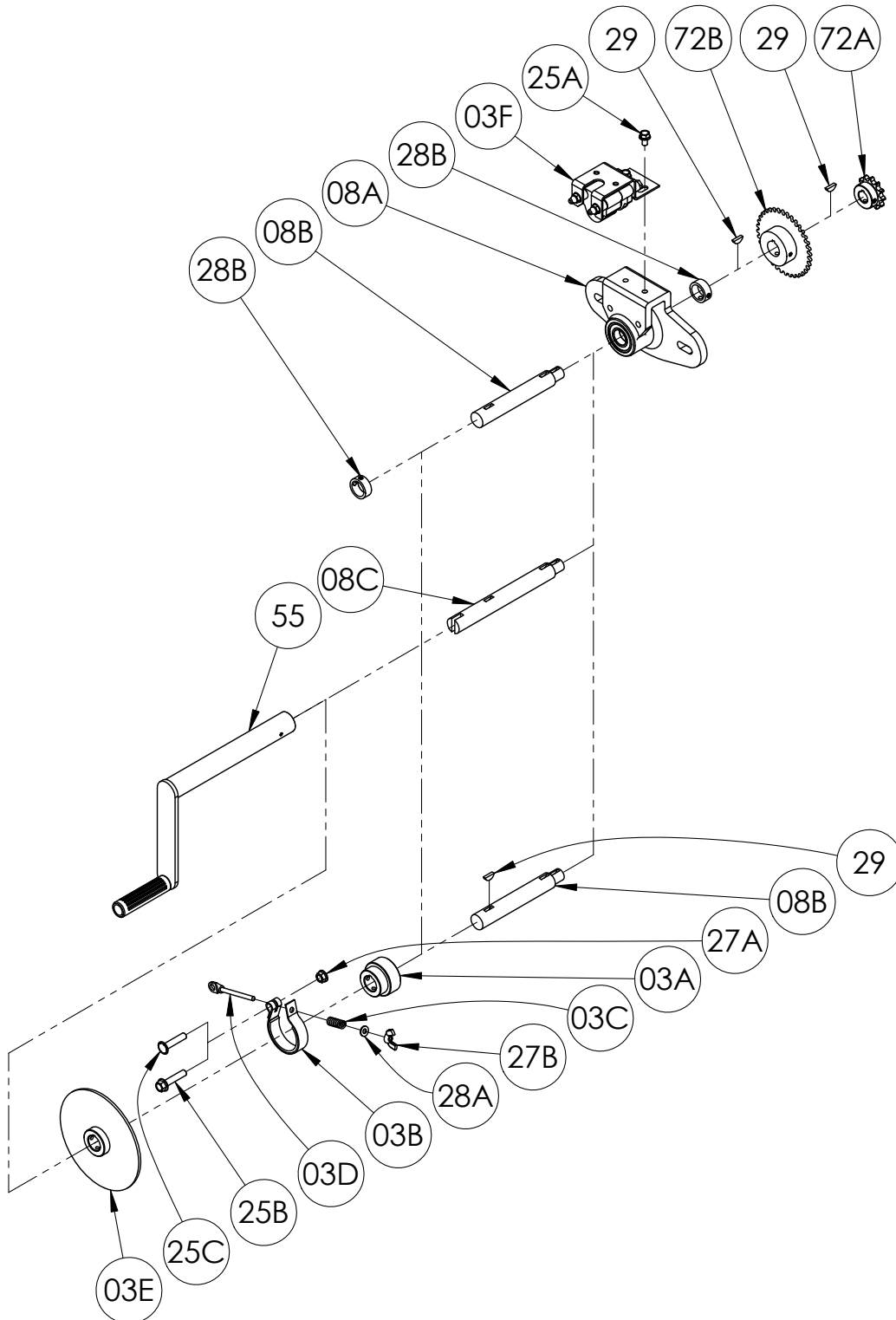


Reduction Unit Assembly



PARTS LIST
ISO 155
Reduction Unit Assembly

When Ordering Parts
BE SURE TO SPECIFY COMPLETE MODEL NUMBER and SERIAL NUMBER OF REEL
USE PART NUMBER!

Item #.	Description	Part No.	Qty
03A	Band (Comet) Brake Iron Hub (1" Bore).....	9947.0042	1
03B	Band (Comet) Brake Strap	9947.0091	1
03C	SST Band (Comet) Brake Spring (1-5/16" Length).....	9947.0096	1 or 2
03D	1/4"-20 Band Brake Tension Adjustment Rod (3-1/2" Long).....	9947.0094	1
03D	1/4"-20 Band Brake Tension Adjustment Rod (4-3/4" Long) for Air Brake (not shown).....	9947.0104	1
03E	Brake Disc Assembly w/ Keyed Arbor (6-5/8" O.D. x 1" I.D.) for Air Brake.....	9947.0150	1
03F	Standard Air Caliper Brake (P-38).....	9947.0020	1
08A	Clutch/Reduction Unit Housing w/ Two Bearings (Specify Configuration).....	9948.0015	1
08B	Reduction Unit Shaft (1" x 3/4" Dia. x 7" Long) Standard w/ Provision for Air and/or Strap Brake, per P08A-00370	9948.0112	1
08C	Reduction Unit Shaft (1" x 3/4" Dia. x 9" Long) w/ Provision for Auxiliary Rewind, & Air and/or Strap Brake, per P08A-00390	9948.0113	1
25A	5/16"-18 x 1/2" Spinlock Bolt (for Air Brake)	9904.2158	2
25B	3/8"-16 x 1-3/4" Spinlock Bolt (for Strap Brake)	9904.2205	1
25C	3/8"-16 x 1-3/4" Spinlock Bolt (Head ground down to clear Disc Brake for Air Brake)	9947.0151	1
27A	3/8"-16 Spinlock Nut.....	9904.6200	1
27B	1/4"-20 Band (Comet) Brake Wing Nut	9947.0095	1
28A	1/4" Flat Washer	9954.0005	1
28B	PSC-1 Pinion Shaft Collar w/ Set Screw	9914.0351	1 or 2
29	Woodruff Key #9 (3/16" x 3/4")	9916.0080	2 or 3
55	H-18 Steel Hand Crank - 10" Length (E-Coated) (see ISO-214 for parts)	9914.0011	1
72A	Reduction Unit Sprocket - 12T40 w/ 3/4" Bore.....	9948.0027	1
72A	Reduction Unit Sprocket - 12T35 w/ 3/4" Bore (3/4" Long) (for Auxiliary Rewind and Air Brake) (not shown).....	9948.0026	1
72A	Reduction Unit Sprocket - 12T35 w/ 3/4" Bore (1" Long) (for standard Clutch/Reduction Units) (not shown)	9948.0029	1
72B	Reduction Unit Sprocket - 36T35 w/ 1" Bore.....	9948.0031	1
72B	Reduction Unit Sprocket - 18T35 w/ 1" Bore (not shown).....	9948.0095	1
72B	Reduction Unit Sprocket - 25T35 w/ 1" Bore (not shown).....	9948.0096	1
72B	Reduction Unit Sprocket - 48T35 w/ 1" Bore (not shown).....	9948.0033	1