

DESCRIPTION:

Hannay reduction units are designed to fit most Hannay electric rewind reels. They increase torque and permit a slower operating speed. Reduction units may be installed at the factory or they may be installed in the field. Units for field installation are supplied complete with chain, connecting link and fasteners. This TSB shows how to install a reduction unit.

INSTALLATION KIT CONTAINS:

One Reduction Chain Drive Unit, a chain with connecting link for the motor and all fasteners needed to install the reduction. Note: the chain already installed on the reel may need to be lengthened or shortened depending on the installation location of the reduction unit.

GEAR RATIOS:

Hannay reduction units are available in the ratios shown in the attached chart. Ratios are listed according to the number of teeth in each sprocket.

TO ORDER:

For field installations, please provide the reel's serial and model number along with the reduction ratio desired. Units for factory installation should be ordered with the reel.

COMMON REDUCTION RATIOS		
RATIO	SPEED REDUCTION	TORQUE INCREASE
12/18	33%	50%
12/25	50%	100%
12/36	67%	200%
12/48	75%	300%

Table 1 - Guide for Reduction Ratios vs. Hose Size

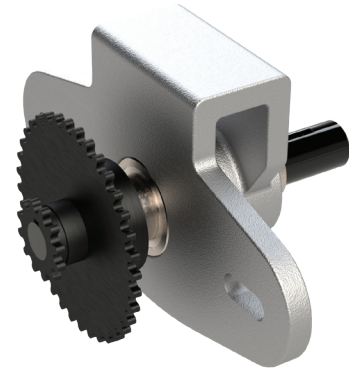


Figure 1 – Standard Reduction Unit

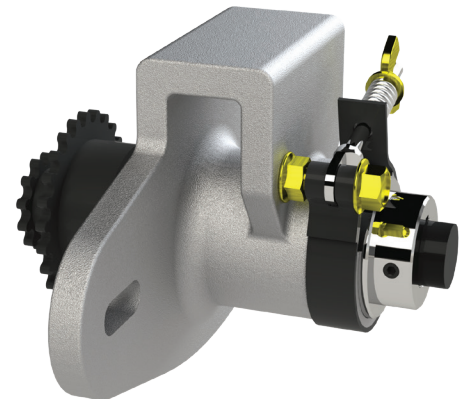


Figure 2 – Reduction Unit w/ Optional Strap
Note: Strap brake orientation may vary based on reel configuration

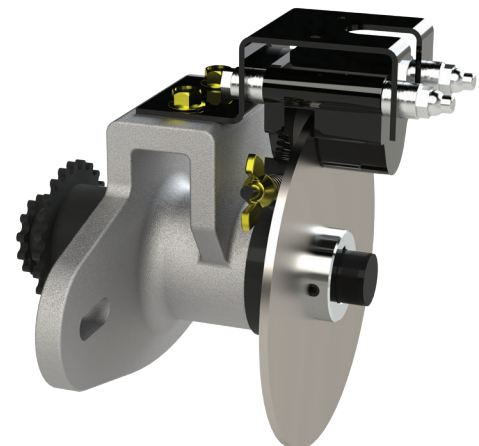


Figure 3 – Reduction Unit w/ Optional Air & Strap Brake
Note: Strap brake orientation may vary based on reel configuration

PARTS NEEDED:

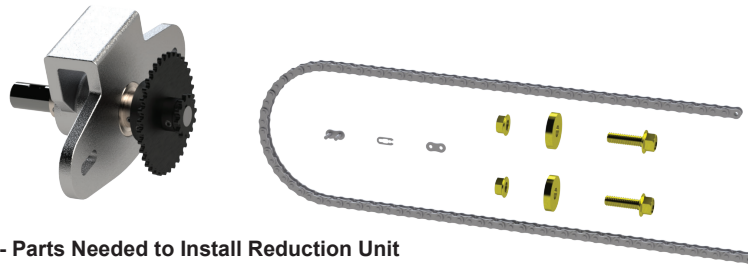


Figure 4 - Parts Needed to Install Reduction Unit

ACTIONS REQUIRED FOR INSTALLATION:

1. Disconnect existing drive chain master link from reel motor and sprocket.

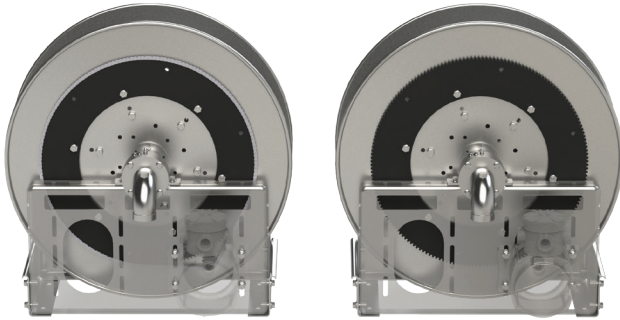


Figure 5 - Reel shown with motor chain (left) and without motor chain (right)

2. Attach reduction unit in space provided on motor plate as shown (opposite motor).

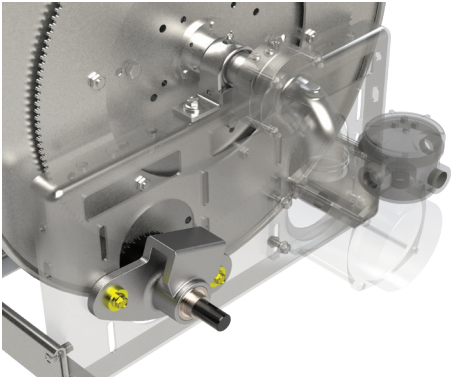


Figure 6 - Reel with Reduction Installed

3. Using original chain, connect the reel disc sprocket to the smaller sprocket of the reduction unit and adjust tension. In some cases, chain may require adding or removing links

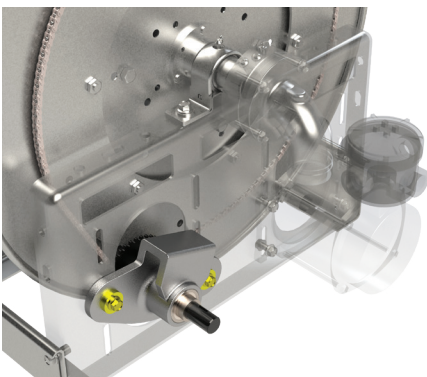


Figure 7 - Reel with Spool Chain Attached to Reduction Unit

4. Attach chain supplied with reduction unit to motor sprocket and the larger of the two reductions unit sprockets; then adjust chain tension by rotating, raising or lowering the reduction unit as required. Tighten the reduction unit fasteners.

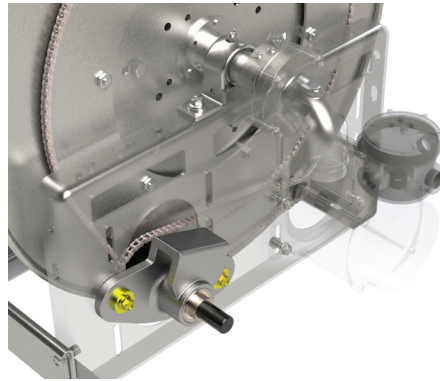


Figure 8 - Reel with Spool & Motor Chains Attached to Reduction

5. Align chains by moving sprockets in and out on their shafts. Tighten collar set screws. The reel is now ready for operation.

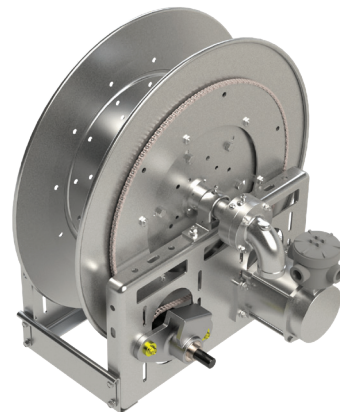


Figure 9 - Completed Reduction Installation

PERIODIC MAINTENANCE:

Check tension on both chains. Deflection should not be more than 1/4" between the sprockets. Lubricate chains and sprocket teeth as needed with good chain oil.