

Utility Grounding Reels

For use on:

- Construction Vehicles
- Utility Vehicles
- Maintenance Vehicles
- Rescue & HazMat Vehicles

Truck grounding reels.

- Easy cable pay-out.
- Quick and convenient rewind gets you back in service fast.
- Heavy-duty steel construction stands up to demanding field use.
- Direct access to lube rotary ground device.
- Serviceable pawl and pin assembly.
- Easily greaseable Zerk fitting.
- Independently tested to 43 kA for 30 cycles.¹
- Bolt-down design.
- Manual or automatic spring rewind available.
- Helps meet OSHA requirements for vehicle grounding.²
- Supplied with or without optional cable and clamp.

¹ Although Hannay SGCR and GCR Series grounding reels are rated to 43 kA for 30 cycles (the maximum fault current rating for 4/0 cable), the size and spring pull force of the reel effectively limits use of these reels to 2/0 cable and smaller. 2/0 cable has a maximum fault current rating of 27 kA. Please refer to ASTM 855-90 (Standard Specification for Temporary Grounding Systems) for more information.

² OSHA Subpart V, Section 1926.952, requires grounding of vehicles working near energized lines or equipment. Hannay grounding reels help meet this requirement and encourage crew compliance by providing a simple, efficient method of handling heavy grounding cable.

Model SGCR 10-17-19

Spring Rewind Grounding Reel

- Fast, convenient automatic spring rewind.
- A ratchet mechanism locks the reel.
- Built-in cable hoop.
- Internal rotary device.



Model GCR 10-17-19

Manual Rewind Grounding Reel

- Offers manual rewind with a hand crank permanently attached to the disc.
- Internal rotary device.

Model SGCR 10-17-19
Spring rewind
Standard configuration shown



Model GC 10-17-19

Manual Storage Reel (Not Shown)

- Storage only.
- Manual rewind with a hand crank permanently attached to the disc.

Model GCR 10-17-19
Manual rewind
Standard configuration shown

PARTS DRAWING – MODEL SGCR 10-17-19 – ISO 95

| Model Number | Cable Capacity of Reel shown in feet/meter | | | | Approx. Weight shown in lb/kg | |
|----------------------|--|-----------------------|------------------|------------------|-------------------------------|----------------------|
| | O.D. in. mm | Ga./No. of Conductors | | | | |
| | | #2 .50 13 | 1/0 .63 16 | 2/0 .66 17 | NET (less cable) | SHIP (less cable) |
| SGCR 10-17-19 | 75 | 75 | 65 | 43 | 52 | |
| | 23 | 23 | 20 | 20 | 24 | |
| GCR 10-17-19 | 150 | 90 | 90 | 30 | 36 | |
| | 46 | 27 | 27 | 14 | 16 | |
| GC 10-17-19 | 150 | 90 | 90 | 28 | 34 | |
| | 46 | 27 | 27 | 13 | 15 | |

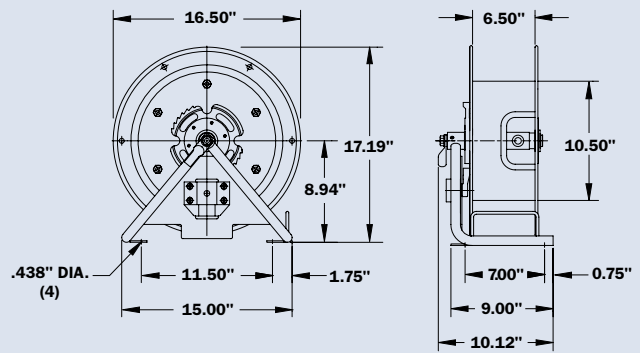
Notes:

1. Specifications subject to change.
2. When ordering, specify model number, cable gauge, O.D., length, and coating if required.
3. Specify finish if other than standard. Reels can be shipped as a parcel package (via FedEx or UPS Ground).

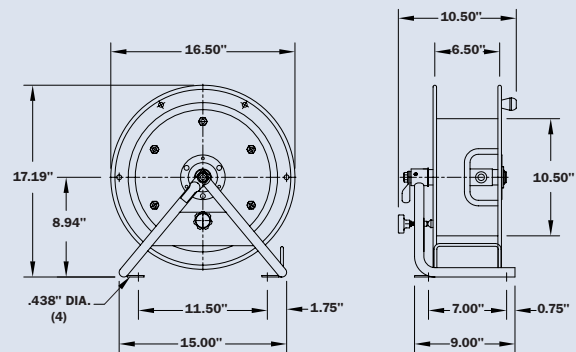
Note: If shipping reel with cable, add 16 lbs. for packaging, plus weight of cable.

Cable Weights:

- #2 gauge = .28 lb/ft
- 1/0 gauge = .43 lb/ft
- 2/0 gauge = .52 lb/ft



Model SGCR 10-17-19



Model GCR 10-17-19



All Hannay reels are constructed of quality heavy gauge steel (optional aluminum or stainless steel also available on most models).

