

Reel Product News

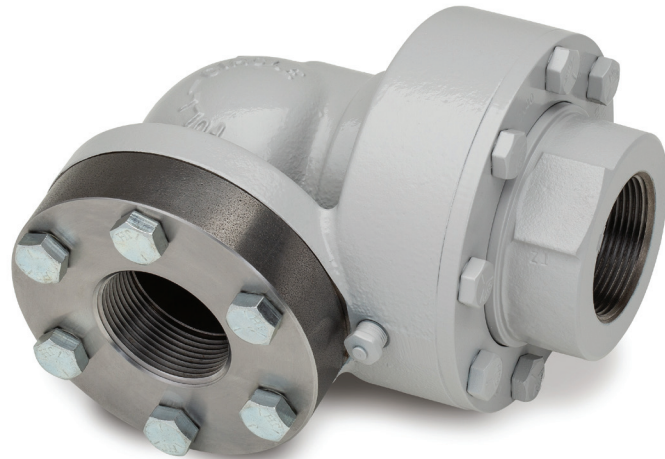
Hannay Offers Flanged Swivel Options

Introducing a flanged connection swivel option from Full-Circle.

This flanged inlet connection allows for ease of installation and maintenance for hose reel use. It has identical dimensions as the standard threaded connection swivels with an easy bolt in style replacement.

Barstock machined flanges available as threaded FNPT, socket-weld, or butt-weld versions in 1-1/2 or 2-inch. Offered in combination pipe sizes for inlet and outlet, and also stainless steel companion flanges are available.

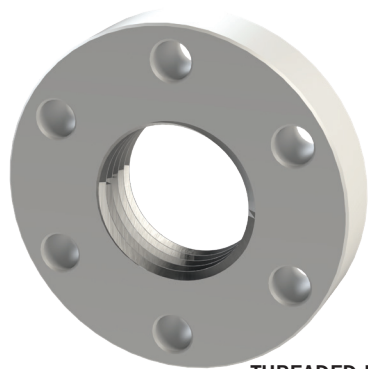
(UL Listed for LP-gas, Natural Gas, and Anhydrous Ammonia)



Flanged Swivel Features:

- Flanged end is located on non-rotating end of swivel. When ordering, specify model # of swivel main housing and flange part #.
- Swivel model #s ending in "LN" are intended for LP-gas or natural gas service only. Swivel model #s ending in "N" are intended for NH3 service.
- Flanges include cap screws and o-ring.
- Socket-weld or butt-weld flanges are supplied separately from the swivel joint so they may be welded to the piping.
- Threaded flanges are already assembled onto the swivel joint and factory torqued.
- Temperature Range: -40°F to +250°F.
- Hydrostatic Test Pressure: 2000 psi. Maximum Allowable Working Pressure: 400 psi

Available in threaded, socket-weld, or butt-weld versions.



THREADED FNPT



SOCKET-WELD



BUTT-WELD

ORDERING INFORMATION:

Contact Hannay Reels Inside Sales Department at: 877-467-3357 or email reels@hannay.com for more information.