

Firefighting & Rescue Reels

| Booster Hose | Large Diameter Hose | Hazmat Situations | Dual Hose | Collapsible Hose |
| Breathing & Utility Air | Live Cable | Extrications | Hydraulics & Rescue Tools |



Family owned and operated since 1933

Contents

FIREFIGHTING REELS START ON PAGE 3

Reel Type	I.D. Hose Sizes	Page
How to Specify Hannay Reels		3
Manual or Power Rewind Hose Reels		
Series F4000	3/4" or 1"	4
Series F4100	3/4" or 1"	5
Series F/SBF	3/4" or 1"	6-7
Series ESF/SBESF	3/4" or 1"	8-9
Series FF/SBFF - Booster Hose	1-1/4" or 1-1/2"	10-11
Collapsible Hose	1-1/2" or 1-3/4"	
Twin Fire Reel Conversion Kit		10
Manual Rewind Hose Reels		
Series F3100/FF3600 - Booster Hose	3/4" – 1-1/2"	12-13
Collapsible Hose	1" – 1-3/4"	
Manual or Power Rewind Dual Hose Reels		
Series F7100 - Dual Hose	3/4" – 1-1/2"	14
Mercedes and Niedner Altra® Capacities		15
Manual or Power Rewind Large Diameter Hose Reels		
Series HDLD Reels and Spools	1-1/2" – 6"	16-17

RESCUE REELS START ON PAGE 18

Reel Type	Page
Spring Rewind Rescue Reels for Breathing or Utility Air	
Series FN700	19
Power Rewind Twin Rescue Reels (Air, Hydraulic or Cable)	
Series TEF	20-21
Manual or Power Rewind Reels for Breathing or Utility Air	
Series F1500	22
Series ELF1500/ESF1500	23
Manual or Power Rewind Reels for Hydraulics/Rescue Tools	
Series EF2000	24
Series EF2200	25
Manual or Power Rewind Reels for Live Electric Cable	
Series CR1600	26
Series ELFCR1600/ESFCR1600	27
Series CR16-14-16	28
Portable Storage Reels	
Series C16-10-11/C20-14-16	29
Accessories	30
Hannay Reels Sales Policies	31

Attention Truck Committees and Specifiers of Fire & Rescue Apparatus

Products shown and described in this catalog are suggested models for broad use applications throughout the firefighting industry. All models can be assembled to dimensionally fit your unique applications and space requirements, and all our components are designed for multiple configurations.

For special orders, contact your Hannay dealer or call our Inside Sales Group.



Top performance. Extreme conditions.

Safety and quick response time are critical when it comes to fighting fires. Our reels make payout and pickup quicker so you can work more efficiently and effectively when every second counts. That's why Hannay Reels is the #1 reel company specified by OEMs and professionals worldwide, based on product reliability, ease of use, and long life. When it comes to keeping your crew and your community safe, you can trust Hannay Reels.

Types of Firefighting reels:

Booster Hose Reels – Quick first-attack for small fires or while larger volume hoses are being set up.

LD (Large Diameter) Reels – Reels for long lengths of 1-1/2" to 6" collapsible hose.

Dual Agent Reels – For firefighting with foam.

Swing-Out Reels – For aircraft rescue firefighting applications.

Portable/Hand-held Reels – For hose or cable applications.

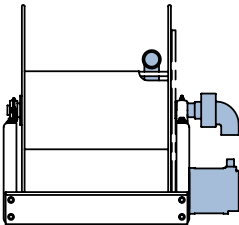
Mounting Hole Sizes for Firefighting Reels

Pressed Frame Reels and Channel Framed Reels	7/16" wide x 7/8" long slot running left to right
Series 4000 Reels	13/32" round holes
Series LD Reels	5/8" round holes

How to Specify **Hannay Reels**

Optional Location of Components

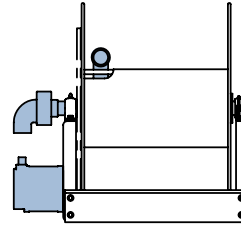
Location of the inlet, outlet riser, and rewind mechanism can be varied to meet your requirements and **must be specified on your order**. The drawings below show the component locations. Unless otherwise specified, most reels will be shipped as **Right Top Rewind** with the inlet, outlet riser, and rewind mechanism on the operator's right.



Standard – Always look at your reel from this position to determine right-hand or left-hand.

RT – Right Top Rewind

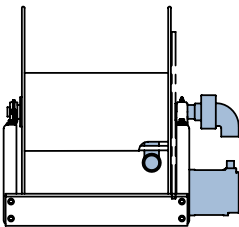
Reels have the inlet, outlet riser, and rewind mechanism on the operator's right. Hose unwinds from the top of the reel.



Standard for 1500, 1800, 2000 & 4000 Series reels.

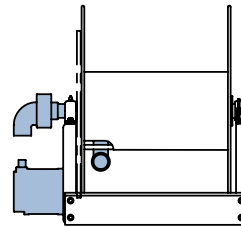
LT – Left Top Rewind

Reels have the inlet, outlet riser, and rewind mechanism on the operator's left. Hose unwinds from the top of the reel.



RB – Right Bottom Rewind

Reels have the inlet, outlet riser, and rewind mechanism on the operator's right. Hose unwinds from the bottom of the reel.



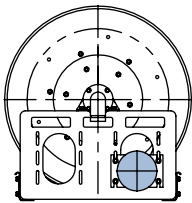
LB – Left Bottom Rewind

Reels have the inlet, outlet riser, and rewind mechanism on the operator's left. Hose unwinds from the bottom of the reel.

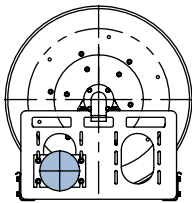
Note: Use component location initials as suffix after model number (ie; EF32-23-24 **RT**)

Optional Motor Locations

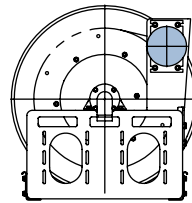
Electric rewind motors can be installed in any of the positions shown in these drawings. The Bottom Rear position is standard. The motor is installed inside the frame on Model ESF reels, which are designed for installation in restricted space.



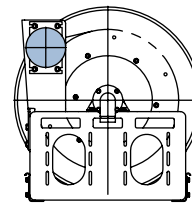
Bottom Rear
(Standard)



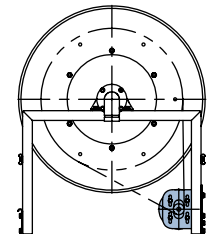
Bottom Front



Elevated 2 O'clock
(REF Reels)



Elevated 10 O'clock
(REF Reels)

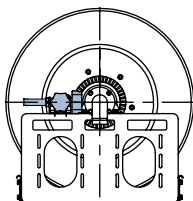


Inboard
(ESF Reels)

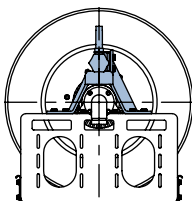
Optional Auxiliary Rewind Positions

Horizontal ring and pinion gear crank rewind mechanism is the standard configuration.

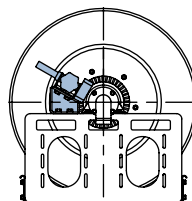
Optional positions include vertical and 30° above centerline, as shown in these drawings. Both are available at extra cost and **must be specified**.



Horizontal (Standard)



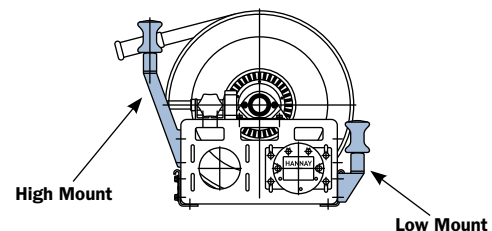
Vertical



30° Angle

Optional Roller Positions

Optional roller assembly mounting kits, up to 2 of either, can be mounted per reel. Consult factory, and indicate installation location – front or rear of reel.



Series F4000 | For Booster Hose

• Compact Reels

To handle single 3/4" or 1" I.D. hose.

- Manual rewind reels include: cam-lock drag brake, spring actuated pin lock and removable direct crank rewind.
- Power rewind reels include: chain and sprocket drive powered by electric or compressed air motor. Strap brake is standard.
- Standard inlet: 90° ball bearing swivel joint, 1" female NPT threads.
- Standard outlet: 1" male NST threads (1.375" x 8 threads per inch).
- Consult factory for other sizes and/or threads.
- Standard inlet, outlet riser and hub assembly are steel (also available in stainless steel).
- Rollers and roller mounting brackets are accessory items. Specify roller position.
- Standard pressures to 1000 psi (69 bar).
- Standard fluid temperatures from -40° F to +250 °F (-40° C to +121° C).
- Consult factory for other pressures and temperatures.



Standard configuration shown with Electric Rewind (E) option

CAUTION: F4000/F4100 Series reels **not** recommended for use with Niedner|Altra® hose. See page 15.

PARTS DRAWING – ISO 68



Optional External Mounting Brackets

Part No. 9906.0025.

Add 2-1/2" to the X dimensions shown in the chart.

Model Number For power rewind see Note 5	Hose Capacity of Reel feet m			Approx. Weight Crank Rewind lb. kg see Note 3			Reel Dimensions*** In. mm						
	I.D. in. mm	3/4 19	1 25	NET	UPS/ FedEx SHIP WT.	Freight SHIP WT.	A	B	E CRANK	E POWER	F CRANK	F POWER	X
	O.D. in. mm	1-9/32 33	1-1/2 38										
F4018-17-18		50	35	36	80*	71	15	10	17.5	19	26.5	20.75	13.5
		15	11	16	36	32	381	254	445	483	673	527	343
F4024-17-18		100	50	46	83*	81	21	16	17.5	19	32.5	26.75	19.5
		30	15	21	38	37	533	406	445	483	826	679	495
F4030-17-18		150	75	57	110*	92	27	22	17.5	19	38.5	32.75	25.5
		46	23	26	50	42	686	559	445	483	978	832	648
F4038-17-18		200	100	70	-	125	35	30	17.5	19	46.5	40.75	33.5
		61	30	32	-	57	889	762	445	483	1181	1035	851

Notes:

1. Specifications subject to change.
2. Upon request, reels can be supplied with drum lengths other than shown and with disc sizes in other diameters.
3. Weights shown in chart are for crank rewind models. ADD these amounts for power rewind models. (does not apply to FedEx or UPS):

	Net lbs/kg	Ship lbs/kg
Electric	18/8.2	18/8.2
Air	15/6.8	15/6.8

4. Dimension "F" is the overall length of standard model reels. On crank rewind models, the dimension shown is with the crank in rewind position. Reels require 3-1/2" clearance to remove crank handle.

5. When ordering power rewind models, prefix model number with:
A = Air Rewind – supplied with control valve and 18" air hose.
E = Electric Rewind (1/3 HP) – 12v and 24v DC rewind reels supplied with switch and solenoid. 115v AC rewind reels are not supplied with switch, but can be ordered separately.

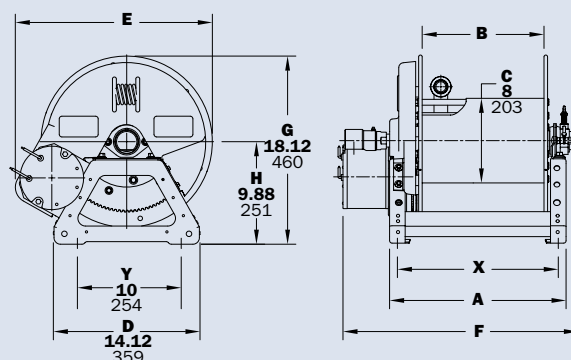
6. Be sure to check dimensions and weights prior to ordering.

7. Some roller options may prohibit the use of our molded chain guard.

NOTICE: A flexible connector must be used between the inlet pipe and the inlet swivel joint.

*Dimensional weight applies when shipped as a parcel package (via FedEx or UPS Ground).

*** X, Y indicate mounting holes.



Series F4100

To handle single 3/4" or 1" I.D. hose.

- Lightweight, compact reels designed for long lengths of hose in manual and power rewind.
- Gear-driven crank rewind with removable handle and adjustable brake is standard.
- Power rewind reels include: chain and sprocket drive powered by electric or compressed air motor.
- Standard inlet: 90° ball bearing swivel joint, 1" female NPT threads.
- Standard outlet: 1" male NST threads.
- Rollers and roller mounting brackets are accessory items. Specify roller position.
- Standard pressures to 1000 psi (69 bar).
- Standard fluid temperatures from -40° F to +250 °F (-40° C to +121° C).
- Consult factory for other pressures and temperatures.



Standard configuration shown with Electric Rewind (E) option and gear-driven crank rewind

CAUTION: F4000/F4100 Series reels **not** recommended for use with Nieder|Altra® hose. See page 15.

PARTS DRAWING – ISO 216

Model Number For power rewind see Note 5	Hose Capacity of Reel feet m			Approx. Weight Crank Rewind lb. kg see Note 3		Reel Dimensions*** in. mm					
	I.D. in. mm	3/4 19	1 25	NET	SHIP	A	B	E CRANK	E POWER	F	X
	O.D. in. mm	1-9/32 33	1-1/2 38								
F4118-17-18		50 15	35 11	62 28	97 44	15 381	10 254	18 457	20.5 521	21.5 546	7.5 190
F4124-17-18		100 30	50 15	72 33	107 49	21 533	16 406	18 457	20.5 521	27.5 699	13.5 343
F4130-17-18		150 46	75 23	83 38	118 54	27 686	22 559	18 457	20.5 521	33.5 851	19.5 495
F4138-17-18		200 61	100 30	96 44	131 59	35 889	30 762	18 457	20.5 521	41.5 1054	27.5 698

Notes:

1. Specifications subject to change.

2. Upon request, reels can be supplied with drum lengths other than shown.

3. Weights shown in chart are for crank rewind models. ADD these amounts for power rewind models:

	Net lbs/kg	Ship lbs/kg
Electric	18/8.2	18/8.2
Air	15/6.8	15/6.8

4. Dimension "F" is the overall length of standard model reels.

5. When ordering power rewind models, prefix model number with:

A = Air Rewind – supplied with control valve and 18" air hose.

E = Electric Rewind (1/3 HP) – 12v and 24v DC rewind reels supplied with switch and solenoid. 115v AC rewind reels are not supplied with switch, but can be ordered separately.

6. Be sure to check dimensions and weights prior to ordering.

Technical drawing of the front view of the hose reel. Dimensions shown: E (total width), B (width of the drum), G (height to the top of the drum), H (height to the bottom of the drum), Y (width of the base), and D (width of the base). A Hannay logo is visible on the left side of the drum.

Technical drawing of the side view of the hose reel. Dimensions shown: B (width of the drum), C (height of the drum), X (width of the base), A (width of the base), and F (overall length of the reel).

NOTICE: A flexible connector must be used between the inlet pipe and the inlet swivel joint.

*** X, Y indicate mounting holes.

Series **F/SBF** | For Booster Hose

To handle 3/4" or 1" I.D. hose.

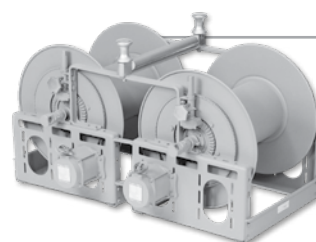
- Standard booster hose reel is steel, painted graphite. Aluminum or stainless steel construction is also available.
- Super Booster (SBF) polished aluminum construction reel weighs up to 30% less than standard booster reel. Prefix complete model number with "SB" when ordering. See Note 6 on page 7.
- Gear-driven crank rewind is standard. Choose chain and sprocket drive powered by electric or compressed air motor.
- Pinion brake standard.
- Standard inlet: 1" 90° ball bearing swivel joint with 1" female NPT threads.
- Standard outlet: 1" male NST threads. (1.375" x 8 threads per inch.)
- Consult factory for other sizes and/or threads.
- Standard inlet, outlet riser, and hub assembly are steel (also available in stainless steel).
- Rollers and roller mounting brackets are accessory items. Specify roller position.
- Standard pressures to 1000 psi (69 bar).
- Standard fluid temperatures from -40° F to +250 °F (-40° C to +121° C).
- Consult factory for reels to operate at other pressures and temperatures.

CAUTION: When using Niedner|Altra® hose, a special riser and/or larger drum diameter is required.

See chart for capacity on page 1, or consult factory.



Shown with Electric Rewind (E), optional red finish and optional roller and spool assembly



Twin Fire Reel Conversion Kit is also available. Refer to page 10.

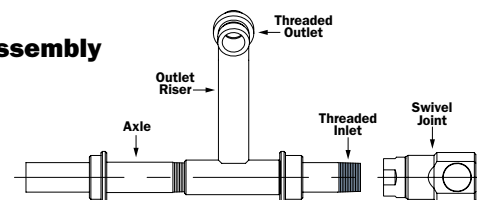
Hub Assembly Options

The hub assembly is the heart of the hose reel. It includes the outlet riser, the reel axle, and the threaded inlet to which the swivel joint is attached. The swivel joint permits the reel to rotate freely while connected to the fluid source.

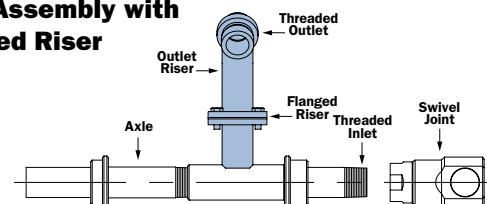
The outlet riser is engineered to conform to the contour of the drum so the hose lies smoothly against the drum without kinking. Smooth interior surfaces are flow-contoured for unrestricted flow and minimal pressure loss through the reel.

A 2-way flow hub assembly is available on certain models as an option. On this assembly, the reel axle is threaded on both ends so the swivel joint can be attached at either end to match piping. A pipe cap is supplied to seal the opposite end.

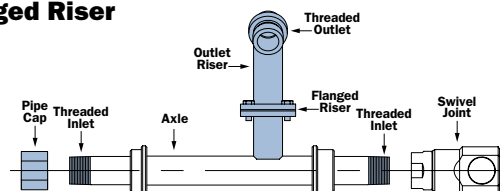
Standard Hub Assembly



Standard Hub Assembly with Optional Flanged Riser



Optional 2-Way Hub Assembly with Optional Flanged Riser



For Booster
Hose

Series F/SBF

PARTS DRAWING: SERIES F – ISO 84; SERIES SBF SUPER BOOSTER® – ISO 122

Model Number For power rewind see Note 5	Hose Capacity of Reel feet m			Approx. Weight Crank Rewind lb. kg see Note 4				Reel Dimensions*** in. mm									
	I.D. in. mm	3/4 19	1 25	STEEL		ALUMINUM see Note 6		A	B	D	E	F CRANK	F POWER	G	H	X	Y
	O.D. in. mm	1-9/32 33	1-1/2 38	NET	SHIP	NET	SHIP										
*F32-19-21-10.5	175 53	85 26	102 46	144 65	86 39	128 58		29.5 749	24 610	20.5 521	21.62 549	34.25 870	34.38 873	21.5 546	12.12 308	21.5 546	16.75 425
*F24-23-24-10.5	150 46	125 38	92 42	134 61	79 36	121 55		21 533	15.5 394	20.5 521	23 584	25.75 654	25.88 657	23.5 597	12.12 308	13 330	16.75 425
F30-23-24-10.5	225 68	200 61	105 48	147 67	88 40	130 59		27.5 699	22 559	20.5 521	23 584	32.25 819	34.25 867	23.5 597	12.12 308	19.5 495	16.75 425
F38-23-24-10.5	300 91	250 76	120 54	162 73	100 45	142 64		35 889	29.5 749	20.5 521	23 584	39.75 1010	41.75 1060	23.5 597	12.12 308	27 686	16.75 425
F28-25-26-10.5	275 84	175 53	113 51	155 70	93 42	135 62		25.5 648	20 508	25.5 648	24.75 629	30.25 768	32.25 819	27.88 708	15.5 394	17.5 445	21.75 552
F34-25-26-10.5	350 107	250 76	126 57	168 76	99 45	141 64		31.5 800	26 660	25.5 648	24.75 629	36.25 921	38.25 972	27.88 708	15.5 394	23.5 597	21.75 552
*F16.5-30-31-10.5	175 53	125 38	100 45	150 68	83 38	133 60		13.5 343	8 203	25.5 648	28.75 730	18.25 464	18.38 467	29.88 759	15.5 394	5.5 140	21.75 552
*F20-30-31-10.5	250 76	150 46	107 49	157 71	87 39	137 62		17 432	11.5 292	25.5 648	28.75 730	21.75 552	21.88 556	29.88 759	15.5 394	9 229	21.75 552
F24-30-31-10.5	350 107	250 76	113 51	163 74	91 41	141 64		21 533	15.5 394	25.5 648	28.75 730	25.75 654	27.75 705	29.88 759	15.5 394	13 330	21.75 552
F28-30-31-10.5	– –	300 91	121 55	171 78	96 43	146 66		25.5 648	20 508	25.5 648	28.75 730	30.25 768	32.25 819	29.88 759	15.5 394	17.5 445	21.75 552
F34-30-31-10.5	– –	350 107	134 61	184 83	103 47	153 69		31.5 800	26 660	25.5 648	28.75 730	36.25 921	38.25 972	29.88 759	15.5 394	23.5 597	21.75 552
F20-33-34-10.5	300 91	200 61	107 49	157 71	87 39	137 62		16.5 419	11.5 292	31.5 800	31.75 806	21.12 536	23.25 591	33.62 854	17.75 451	9 229	27.75 705

Notes:

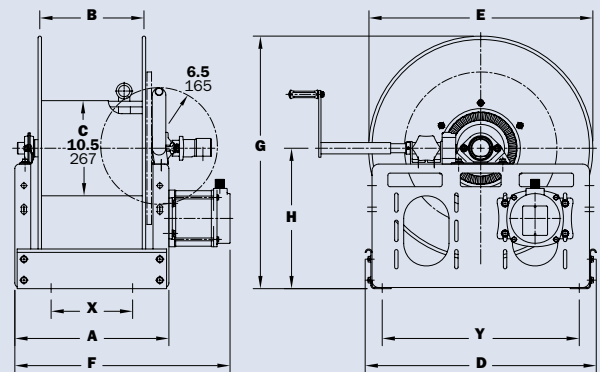
- Specifications subject to change.
- A 2-way flow hub is available and must be specified. Assembly is threaded on both ends so swivel joint can be attached at either end of the reel. A pipe cap seals the opposite end. (See Ordering & Accessory Guide.)
- Upon request, reels can be supplied with drum lengths other than shown and with disc sizes in other diameters.
- Weights shown in chart are for crank rewind models. ADD these amounts for power rewind models:

	Net lbs/kg	Ship lbs/kg
Electric (E)	20/9.1	20/9.1
Electric (EP)	40/18.1	40/18.1
Air	20/9.1	20/9.1
- When ordering power rewind models, prefix model number with:
 - A** = Air Rewind – supplied with control valve and 18" air hose.
 - E** = Electric Rewind (1/3 HP)
 - EP** = Electric Rewind (1/2 HP) – 12v and 24v DC rewind reels supplied with switch and solenoid. 115v AC rewind reels are not supplied with switch, but can be ordered separately.
- For polished aluminum reels, prefix complete model number with "SB" (for example: SBEF 32-19-21).
- When installing FH-3 rollers, add 4-1/2" to the "D" dimension.
- Be sure to check dimensions and weights prior to ordering.**

NOTICE: A flexible connector must be used between the inlet pipe and the inlet swivel joint.

*The "F" dimension for these models is shown for 1/3 HP motors. Add 2" to "F" dimension for 1/2 HP motors. The "F" dimension for all other reels is shown for 1/2 HP. Reels handling 175' or more must use 1/2 HP motor. (Use prefix EP when ordering.)

*** X, Y indicate mounting holes.



Series **ESF/SBESF** | For Booster Hose

• Inboard Mounted Motor

To handle 3/4" or 1" I.D. hose.

- Inboard motor location high profile.
- Standard booster hose reel is steel, painted graphite. Aluminum or stainless steel construction is also available.
- Super Booster (SBSF) polished aluminum construction reel weighs up to 30% less than standard booster reel. Prefix complete model number with "SB" when ordering. See Note 6 on page 9.
- Pinion brake standard.
- Standard inlet: 1" 90° ball bearing swivel joint with 1" female NPT threads.
- Standard outlet: 1" male NST threads (1.375" x 8 threads per inch).
- Consult factory for other sizes and/or threads.
- Standard inlet, outlet riser, and hub assembly are steel (also available in stainless steel).
- Rollers and roller mounting brackets are accessory items. Specify roller position.
- Standard pressures to 1000 psi (69 bar).
- Standard fluid temperatures from -40° F to +250 °F (-40° C to +121° C).
- Consult factory for other pressures and temperatures.

CAUTION: When using Niedner|Altra® hose, a special riser and/or larger drum diameter is required.

See chart for capacity on page 15, or consult factory.



Standard configuration shown with Manual Rewind

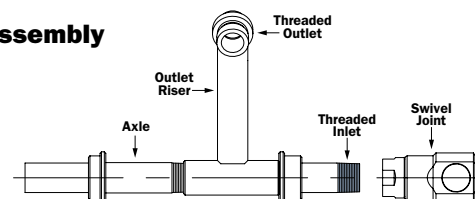
Hub Assembly Options

The hub assembly is the heart of the hose reel. It includes the outlet riser, the reel axle, and the threaded inlet to which the swivel joint is attached. The swivel joint permits the reel to rotate freely while connected to the fluid source.

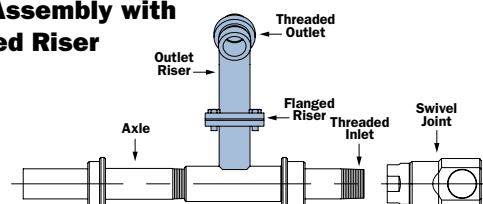
The outlet riser is engineered to conform to the contour of the drum so the hose lies smoothly against the drum without kinking. Smooth interior surfaces are flow-contoured for unrestricted flow and minimal pressure loss through the reel.

A 2-way flow hub assembly is available on certain models as an option. On this assembly, the reel axle is threaded on both ends so the swivel joint can be attached at either end to match piping. A pipe cap is supplied to seal the opposite end.

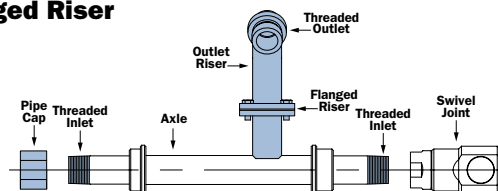
Standard Hub Assembly



Standard Hub Assembly with Optional Flanged Riser



Optional 2-Way Hub Assembly with Optional Flanged Riser



For Booster
Hose |Series **ESF/SBESF**

• Inboard Mounted Motor

PARTS DRAWING – ISO 220

Model Number For power rewind see Note 5	Hose Capacity of Reel feet m			Approx. Weight lb. kg				Reel Dimensions*** in. mm								
	I.D. in. mm	3/4 19	1 25	STEEL		ALUMINUM see Note 5		A	B	D	E	F	G	H	X	Y
	O.D. in. mm	1-9/32 33	1-1/2 38	NET	SHIP	NET	SHIP									
ESF32-19-21-10.5	175 53	85 26	122 55	164 74	100 45	142 64		29 737	24 610	20.5 521	21.62 549	34 864	25.12 638	15.75 400	21.5 546	16.75 425
ESF24-23-24-10.5	150 46	125 38	112 51	154 70	95 43	137 62		20.5 521	15.5 394	23.5 597	23 584	25.5 648	29.25 743	17.88 454	13 330	19.75 502
*EPSF30-23-24-10.5	225 68	200 61	145 66	187 85	122 55	164 74		27 686	22 559	23.5 597	23 584	32 813	29.25 743	17.88 454	19.5 495	19.75 502
*EPSF28-25-26-10.5	275 84	175 53	153 69	195 88	127 58	169 77		25 635	20 508	25.5 648	24.75 629	30 762	30.88 784	18.5 470	17.5 445	21.75 552
*EPSF34-25-26-10.5	350 107	250 76	166 75	208 94	133 60	175 79		31 787	26 660	25.5 648	24.75 629	36 914	30.88 784	18.5 470	23.5 597	21.75 552
ESF16.5-30-31-10.5	175 53	125 38	120 54	170 77	100 45	150 68		13 330	8 203	29 737	28.75 730	18 457	35.62 905	21.25 540	5.5 140	25.25 641
ESF20-30-31-10.5	250 76	150 46	127 58	177 80	103 47	153 69		16.5 419	11.5 292	29 737	28.75 730	21.5 546	35.62 905	21.25 540	9 229	25.25 641
*EPSF24-30-31-10.5	350 107	250 76	153 69	203 92	127 58	177 80		20.5 521	15.5 394	29 737	28.75 730	25.5 648	35.62 905	21.25 540	13 330	25.25 641
*EPSF28-30-31-10.5	– –	300 91	161 73	211 96	130 59	180 82		25 635	20 508	29 737	28.75 730	30 762	35.62 905	21.25 540	17.5 445	25.25 641
*EPSF34-30-31-10.5	– –	350 107	174 79	224 102	137 62	187 85		31 787	26 660	29 737	28.75 730	36 914	35.62 905	21.25 540	23.5 597	25.25 641
*EPSF20-33-34-10.5	300 91	200 61	157 71	207 94	130 59	180 82		16.5 419	11.5 292	31.5 800	31.75 806	21.12 536	38.12 968	22.25 565	9 229	27.88 708

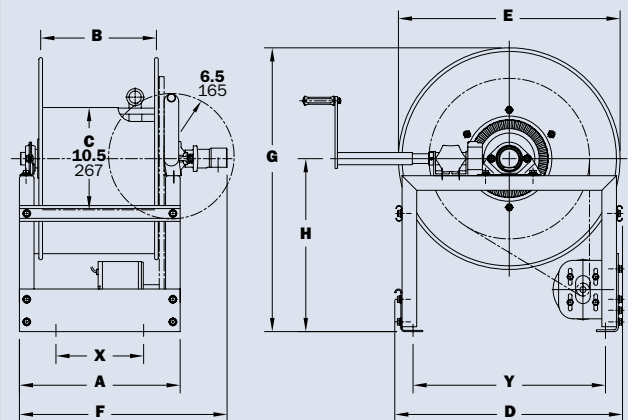
Notes:

- Specifications subject to change.
- A 2-way flow hub is available and must be specified. Assembly is threaded on both ends so swivel joint can be attached at either end of the reel. A pipe cap seals the opposite end. (See Ordering & Accessory Guide.)
- Upon request, reels can be supplied with drum lengths other than shown and with disc sizes in other diameters.
- When ordering power rewind models, prefix model number with:
E = Electric Rewind (1/3 HP)
EP = Electric Rewind (1/2 HP) – 12v and 24v DC rewind reels supplied with switch and solenoid. 115v AC rewind reels are not supplied with switch, but can be ordered separately.
- For polished aluminum reels, prefix complete model number with "SB" (for example: SBESF32-19-21).
- All frames are rollformed channel, except Super Booster®, which is square tubing.
- Be sure to check dimensions and weights prior to ordering.**

NOTICE: A flexible connector must be used between the inlet pipe and the inlet swivel joint.

* Reels handling 175' or more of 1" must use 1/2 HP motor.

*** X, Y indicate mounting holes.



Series **FF/SBFF**

• Large Diameter Booster Hose • Preconnected Collapsible Hose

To handle 1-1/4" or 1-1/2" I.D. booster hose or 1-1/2" or 1-3/4" I.D. collapsible hose.

- Standard booster hose reel is steel, painted graphite. Aluminum or stainless steel construction is also available.
- Super Booster (SBFF) polished aluminum construction reel weighs up to 30% less than standard booster reel. Prefix complete model number with "SB" when ordering. See Note 6 on page 11.
- Gear-driven crank rewind is standard. Choose chain and sprocket drive powered by electric or compressed air motor.
- Pinion brake standard.
- Standard inlet: 1-1/2" 90° ball bearing swivel joint with 1-1/2" female NPT threads and 2" Victaulic® groove.
- Standard outlet: 1-1/2" male NST threads. (1.990" x 9 threads per inch.)
- Consult factory for other sizes and/or threads.
- Standard inlet, outlet riser, and hub assembly are steel (also available in stainless steel).
- Rollers and roller mounting brackets are accessory items. Specify roller position.
- Standard pressures to 600 psi (41 bar).
- Standard fluid temperatures from -20° F to +212 °F (-29° C to +100° C).
- Consult factory for other pressures and temperatures.



Standard configuration shown with Electric Rewind (EP) and optional polished aluminum construction

CAUTION: When using Niedner|Altra® hose, a special riser and/or larger drum diameter is required.

See chart for capacity on page 15, or consult factory.

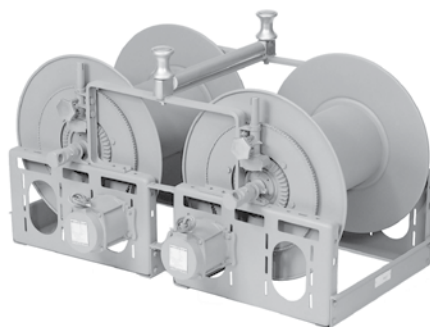
Optional

Twin Fire Reel **Conversion Kit** | For Booster Hose

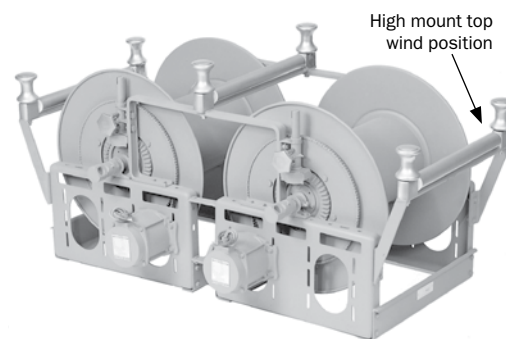
For Series F and FF.

Twin booster hose reels combine matched F or FF Series reels in a single unit with a center-mounted roller and spool assembly. Hose from both reels can be used on either side of the truck. Rugged unit frame construction maintains alignment and simplifies installation when two reels are combined.

Consult dealer or factory for more information.



Two F Series reels, and a standard Twin Fire Reel Conversion Kit



Two F Series reels, a Twin Fire Reel Conversion Kit, and two optional outrigger roller assemblies

Series FF/SBFF

• Large Diameter Booster Hose • Preconnected Collapsible Hose

PARTS DRAWING – ISO 18 PRESSED FRAME, OR ISO 41 ROLLFORM FRAME

Model Number	Hose Capacity of Reel feet m					Approx. Weight Crank Rewind lb. kg see Note 4				Reel Dimensions*** in. mm								
	Round Hose			Collapsible Hose														
	I.D. in. mm	1-1/4 32	1-1/2 38	1-1/2 38	1-3/4 44	STEEL		ALUMINUM see Note 6		A	B	D	E	F	G	H	X	Y
	O.D. in. mm	1-13/16 46	2-1/16 52	3/4 x 3 19 x 76	7/8 x 3-1/4 22 x 83	NET	SHIP	NET	SHIP									
FF28-23-24-10.5	100 30	50 15	150 46	125 38	111 50	153 69	86 39	128 58	25.5 648	20 508	20.5 521	23 584	32.25 819	23.5 579	12.12 308	17.5 445	16.75 425	
FF28-25-26-10.5	100 30	100 30	200 61	175 53	123 56	165 75	96 43	138 62	25.5 648	20 508	25.5 648	24.75 629	32.25 819	27.88 708	15.5 394	17.5 445	21.75 552	
FF16-30-31-10.5	75 23	50 15	100 30	75 23	110 50	160 73	86 39	136 62	13 330	7.5 191	25.5 648	28.75 730	19.75 502	29.88 759	15.5 394	7.75 197	21.75 552	
FF18-30-31-10.5	100 30	75 23	150 46	75 23	114 52	164 74	89 40	139 63	15 381	9.5 241	25.5 648	28.75 730	21.75 552	29.88 759	15.5 394	7 178	21.75 552	
FF28-30-31-10.5	250 76	150 46	300 91	250 76	131 59	181 82	99 45	149 67	25.5 648	20 508	25.5 648	28.75 730	32.25 819	29.88 759	15.5 394	17.5 445	21.75 552	
FF20-33-34-10.5	125 38	100 30	200 61	150 46	120 54	174 79	92 42	146 66	16.5 419	11.5 292	31.5 800	31.75 806	23.25 591	33.62 854	17.75 451	9 229	27.75 705	
FF22-33-34-10.5	150 46	150 46	250 76	200 61	125 57	179 81	95 43	149 67	18.5 470	13.5 343	31.5 800	31.75 806	25.25 641	33.62 854	17.75 451	11 279	27.75 705	

Notes:

- Specifications subject to change.
- Dimensions up to and including 30-31 disc size reflect pressed frames. All others are rollformed channel frames, except Super Booster®, which is square tubing.
- Upon request, reels can be supplied with drum lengths other than shown and with disc sizes in other diameters.
- Weights shown in chart are for crank rewind models. ADD these amounts for power rewind models.

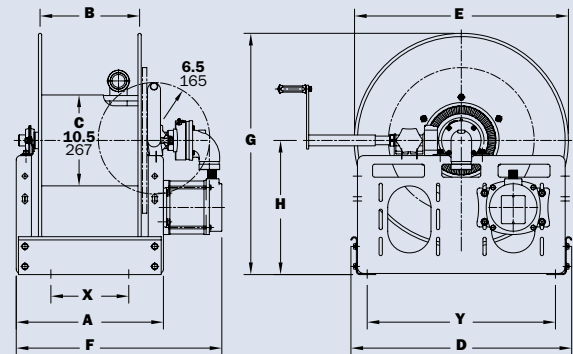
	Net lbs/kg	Ship lbs/kg
Electric	40/18.1	40/18.1
Air	20/9.1	20/9.1
- When ordering power rewind models, prefix model number with:

A = Air Rewind – supplied with control valve and 18" air hose.

EP = Electric Rewind (1/2 HP) – 12v and 24v DC rewind reels supplied with switch and solenoid. 115v AC rewind reels are not supplied with switch, but can be ordered separately.
- For polished aluminum reels, prefix complete model number with "SB" (for example: SBEPFF28-23-24).
- Be sure to check dimensions and weights prior to ordering.

NOTICE: A flexible connector must be used between the inlet pipe and the inlet swivel joint.

*** X, Y indicate mounting holes.



Series **F3100/FF3600**

• Industrial Fire Protection

To handle 3/4" through 1-1/2" I.D. booster hose or 1" through 1-3/4" I.D. collapsible hose.

- The reel can be installed on the floor or wall.
- Steel construction is standard. Aluminum or stainless steel construction is available.
- Removable direct crank rewind.
- Supplied with spring actuated pin lock.
- Standard inlet, outlet riser, and hub assembly are steel (also available in stainless steel).
- Rollers and roller mounting brackets are accessory items. Specify roller position.

Series **F3100**

- Standard inlet: 1" 90° ball bearing swivel joint with 1" female NPT threads.
- Standard outlet: 1" male NST threads (1.375" x 8 threads per inch).
- Standard pressures to 1000 psi (69 bar).
- Standard fluid temperatures from -40° F to +250 °F (-40° C to +121° C)

Series **FF3600**

- Standard inlet: 1-1/2" 90° ball bearing swivel joint with 1-1/2" female NPT threads and 2" Victaulic® groove.
- Standard outlet: 1-1/2" male NST threads (1.990" x 9 threads per inch).
- Standard pressures to 600 psi (41 bar).
- Standard fluid temperatures from -20° F to +212 °F (-29° C to +100° C).

Both Series

- Consult factory for other sizes and/or threads.
- Consult factory for other pressures and temperatures.

CAUTION: When using Niedher|Altra® hose, a special riser and/or larger drum diameter is required (consult factory). See page 15.



F3100 Series



FF3600 Series

Series **F3100/FF3600**

• Industrial Fire Protection

PARTS DRAWING – F3100 – ISO 113; FF3600 – ISO 111

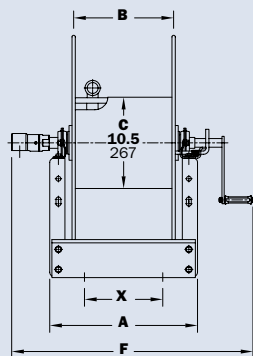
Model Number	Hose Capacity of Reel feet m				Approx. Weight Crank Rewind lb. kg		Reel Dimensions*** in. mm								
	Round Hose		Collapsible Hose												
	I.D. in. mm	3/4 19	1 25	1 26	NET	SHIP	A	B	E	F	G	H	X		
	O.D. in. mm	1-9/32 33	1-1/2 38	1/2 x 1-3/4 13 x 44											
F3116-25-26-10.5	100	75	200	85	120	13	7.5	24.75	25.5	27.88	15.5	7.75			
F3120-25-26-10.5	30	23	61	39	54	330	191	629	648	708	394	197			
	150	100	350	94	129	17	11.5	24.75	29.5	27.88	15.5	9			
F3124-25-26-10.5	46	30	107	43	59	432	292	629	749	708	394	229			
	200	125	450	103	138	21	15.5	24.75	33.5	27.88	15.5	13			
F3128-25-26-10.5	61	38	137	47	63	533	394	629	851	708	394	330			
	275	175	650	113	155	25.5	20	24.75	37	27.88	15.5	17.5			
F3124-30-31-10.5	84	53	198	51	70	648	508	629	940	708	394	445			
	350	250	–	103	153	21	15.5	28.75	33.5	29.88	15.5	13			
	107	76	–	47	70	533	394	730	851	759	394	330			
Model Number	Hose Capacity of Reel feet m				Approx. Weight Crank Rewind lb. kg		Reel Dimensions*** in. mm								
	Round Hose		Collapsible Hose												
	I.D. in. mm	1-1/2 38	1-1/2 38	1-3/4 44	NET	SHIP	A	B	D	E	F	G	H	X	Y
	O.D. in. mm	2-1/16 52	3/4 x 3 19 x 76	7/8 x 3-1/4 22 x 83											
FF3620-25-26-10.5	50	150	75	104	139	17	11.5	25.5	24.75	30.75	27.88	15.5	9	21.75	
FF3624-25-26-10.5	15	46	23	47	63	432	292	648	629	781	708	394	229	552	
	75	150	100	113	148	21	15.5	25.5	24.75	34.75	27.88	15.5	13	21.75	
FF3628-25-26-10.5	23	46	30	51	67	533	394	648	629	883	708	394	330	552	
	100	200	150	123	173	25.5	20	25.5	24.75	39.25	27.88	15.5	17.5	21.75	
FF3624-30-31-10.5	30	61	46	56	78	648	508	648	629	997	708	394	445	552	
	100	250	150	124	174	21	15.5	25.5	28.75	34.75	30.38	15.5	13	21.75	
FF3628-30-31-10.5	30	76	46	56	79	533	394	648	730	883	772	394	330	552	
	150	300	250	134	184	25.5	20	25.5	28.75	39.25	30.38	15.5	17.5	21.75	
FF3634-30-31-10.5	46	91	76	61	83	648	508	648	730	997	772	394	445	552	
	200	400	350	147	197	31.5	26	25.5	28.75	45.25	30.38	15.5	23.5	21.75	
	61	122	107	67	89	800	660	648	730	1149	772	394	597	552	

Notes:

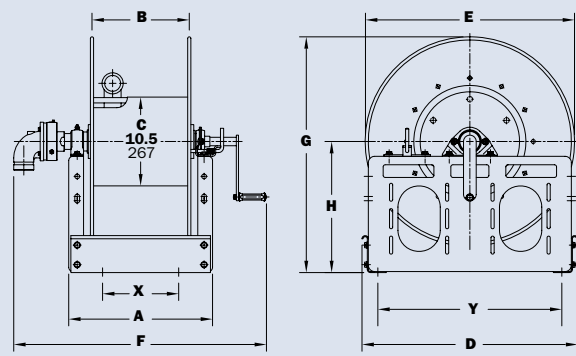
- Specifications subject to change.
- Upon request, reels can be supplied with drum lengths other than shown and with disc sizes in other diameters.
- Power rewind is not available on these models. See Series F or FF.
- 4" clearance needed for crank handle removal.
- Be sure to check dimensions and weights prior to ordering.**

NOTICE: A flexible connector must be used between the inlet pipe and the inlet swivel joint.

***X, Y indicate mounting holes.



F3100



FF3600

Series **F7100** | Dual Hose

• Dual Agent Applications

To handle dual 3/4" through 1" I.D. hose.

- Two swivel joint inlets and two outlet risers.
- All models are available with optional aluminum or stainless steel construction. Super Booster (SB) polished aluminum construction reel weighs up to 30% less than standard booster reel. Prefix complete model number with "SB" when ordering.
- Gear-driven crank rewind is standard. Choose chain and sprocket drive powered by electric or compressed air motor.
- Pinion brake standard.
- Standard inlets: 1" 90° ball bearing swivel joint, 1" female NPT threads.
- Standard outlets: 1" male NST threads (1.375" x 8 threads per inch).
- Standard inlet, outlet riser, and hub assembly are steel (also available in stainless steel).
- Consult factory for other sizes and/or threads.
- Standard pressures to 1000 psi (69 bar).
- Standard fluid temperatures from -40° F to +250 °F (-40° C to +121° C).
- Consult factory for other pressures and temperatures.
- Rollers and roller mounting brackets are accessory items. Specify roller position.

CAUTION: When using Niedner|Altra® hose, a special riser and/or larger drum diameter is required (consult factory). See page 15.



SBEPF7100 Series shown

Standard configuration shown with optional aluminum construction (SB), Electric Rewind (EP) and roller and spool assembly high mount

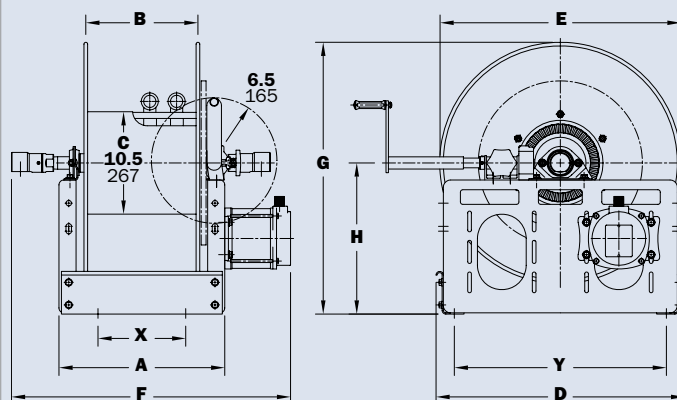
PARTS DRAWING—F7100 – ISO 72

Model Number	Hose Capacity of Reel feet m			Approx. Weight Crank Rewind lb. kg see Note 3		Reel Dimensions*** in. mm									
	I.D. in. mm	3/4 19	1 25	NET	SHIP	A	B	D	E	F CRANK	F POWER	G	H	X	Y
	O.D. in. mm	1-9/32 33	1-1/2 38												
F7126-23-24-10.5		2/75	2/50	109	151	23	17.5	20.5	23	32.5	34.5	23.5	12.12	15	16.75
		2/23	2/15	49	68	584	445	521	584	826	876	597	308	381	425
F7130-25-26-10.5		2/125	2/100	125	175	27.5	22	25.5	24.75	37	39	27.88	15.5	19.5	21.75
		2/38	2/31	57	79	699	559	648	629	940	991	708	394	495	552
F7130-30-31-10.5		2/200	2/150	129	179	27.5	22	25.5	28.75	37	39	29.88	15.5	19.5	21.75
		2/61	2/46	59	81	699	559	648	730	940	991	759	394	495	552
F7132-33-34-10.5		–	2/200	129	179	29	24	31.5	31.75	38.5	40.5	33.62	17.75	21.5	27.75
		–	2/61	59	81	737	610	800	806	978	1029	854	451	546	705

Notes:		
1. Specifications subject to change.		4. When ordering power rewind models, prefix model number with:
2. Upon request, reels can be supplied with drum lengths other than shown and with disc sizes in other diameters.		A = Air Rewind – supplied with control valve and 18" air hose.
3. Weights shown in chart are for crank rewind models. ADD these amounts for power rewind models:		EP = Electric Rewind (1/2 HP) – 12v and 24v DC rewind reels supplied with switch and solenoid. 115v AC rewind reels are not supplied with switch, but can be ordered separately.
	Net lbs/kg	Ship lbs/kg
Electric	40/18.1	40/18.1
Air	20/9.1	20/9.1
		5. For polished aluminum reels, prefix complete model number with "SB" (for example: SBEPF7126-23-24).
		6. Be sure to check dimensions and weights prior to ordering.

NOTICE: A flexible connector must be used between the inlet pipe and the inlet swivel joint.

*** X, Y indicate mounting holes.



Mercedes and Niedner |Altra® Capacities

Mercedes Hose

Reel Model Number	Hose Capacity of Reel feet m				Approx. Weight lb. kg				Reel Dimensions*** in. mm									
	I.D. in. mm	3/4 19	1 25	1-1/2 38	STEEL		ALUMINUM		A	B	C	D	E	F POWER	G	H	X	Y
	O.D. in. mm	1.062 27	1.281 33	1.812 46	NET	SHIP	NET	SHIP										
F4024-17-18	100	–	–	–	46	81	–	–	21	16	8	14.5	19	27	18.12	9.88	19.5	10
	30	–	–	–	21	37	–	–	533	406	203	368	483	686	460	251	495	254
F4030-17-18	200	–	–	–	57	92	–	–	27	22	8	14.5	19	33	18.12	9.88	25.5	10
	61	–	–	–	26	42	–	–	686	559	203	368	483	838	460	251	648	254
F4124-17-18	100	–	–	–	72	107	–	–	21	16	8	15.5	20.5	27.5	18.12	9.88	13.5	12.25
	30	–	–	–	33	49	–	–	533	406	203	394	521	699	460	251	343	311
F4130-17-18	200	–	–	–	83	118	–	–	27	22	8	15.5	20.5	33.5	18.12	9.88	19.5	12.25
	61	–	–	–	38	54	–	–	686	559	203	394	521	851	460	251	495	311
*F32-19-21	175	150	–	–	102	144	80	122	29.5	24	10.5	20.5	21.62	34.38	21.5	12.12	21.5	16.75
	53	46	–	–	46	65	36	55	749	610	267	521	549	873	546	308	546	425
*F24-23-24	200	150	–	–	92	134	75	117	21	15.5	10.5	20.5	23	25.88	23.5	12.12	13	16.75
	61	46	–	–	42	61	34	53	533	394	267	521	584	657	597	308	330	425
*F30-23-24	300	200	–	–	105	147	82	124	27.5	22	10.5	20.5	23	32.38	23.5	12.12	19.5	16.75
	91	61	–	–	48	67	37	56	699	559	267	521	584	822	597	308	495	425
*F16.5-30-31	200	150	–	–	100	150	80	130	13.5	8	10.5	25.5	28.75	18.38	29.88	15.5	5.5	21.75
	61	46	–	–	45	68	36	59	343	203	267	648	730	467	759	394	140	552
*F20-30-31	300	200	–	–	107	157	83	133	17	11.5	10.5	25.5	28.75	21.88	29.88	15.5	9	21.75
	91	61	–	–	49	71	38	60	432	292	267	648	730	556	759	394	229	552
FF32-30-31-20	–	–	100	138	188	100	150	29.5	24	20	25.5	28.75	36.25	29.88	15.5	21.5	21.75	
	–	–	30	63	54	45	68	749	610	508	648	730	921	759	394	546	552	
FF34-33-34-20	–	–	200	140	194	106	160	31	26	20	31.5	31.75	37.75	33.62	17.75	23.5	27.75	
	–	–	61	64	88	48	73	787	660	508	800	806	959	854	451	597	705	

Niedner|Altra® Hose

Reel Model Number	Hose Capacity of Reel feet m				Approx. Weight lb. kg				Reel Dimensions*** in. mm									
	I.D. in. mm	3/4 19	1 25	1-1/2 38	STEEL		ALUMINUM		A	B	C	D	E	F POWER	G	H	X	Y
	O.D. in. mm	1.075 27	1.325 34	1.825 46	NET	SHIP	NET	SHIP										
*F28-19-21-10.5	100 30	– –	– –	– –	98 44	140 64	76 34	118 54	25.5 648	20 508	10.5 267	20.5 521	21.62 549	30.25 768	21.5 546	12.12 308	17.5 445	16.75 425
*F26-23-24-10.5	200 61	– –	– –	– –	94 43	136 62	71 32	113 51	23 584	17.5 445	10.5 267	20.5 521	23 584	27.88 708	23.5 597	12.12 308	15 381	16.75 425
*F24-23-24-12	– –	100 30	– –	– –	92 42	134 61	75 34	117 53	21 533	15.5 394	12 305	20.5 521	23 584	25.88 657	23.5 597	12.12 308	13 330	16.75 425
F28-25-26-12	– –	200 61	– –	– –	113 51	155 70	87 39	129 59	25.5 648	20 508	12 305	25.5 648	24.75 629	32.25 819	27.88 708	15.5 394	17.5 445	21.75 552
FF32-30-31-20	– –	– –	100 30	138 63	188 54	100 45	150 68	29.5 749	24 610	20 508	25.5 648	28.75 730	36.25 921	29.88 759	15.5 394	21.5 546	21.75 552	
FF34-33-34-20	– –	– –	200 61	140 64	194 88	106 48	160 73	31 787	26 660	20 508	31.5 800	31.75 806	37.75 959	33.62 854	17.75 451	23.5 597	27.75 705	

Notes:

- Specifications subject to change.
- These reels require a special angle riser and larger diameter drum; consult factory.
- For F Series – Refer to notes and diagram on page 7.
- For FF Series – Refer to notes and diagram on page 11.

NOTICE: A flexible connector must be used between the inlet pipe and the inlet swivel joint.

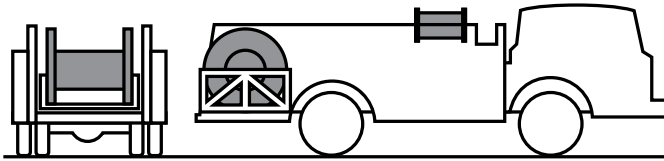
*The "F" dimension for these models is shown for 1/3 HP motors. Add 2" to "F" dimension for 1/2 HP motors. The "F" dimension for all other reels is shown for 1/2 HP. Reels handling 200' or more must use 1/2 HP motor. (Use prefix EP when ordering.)

*** X, Y indicate mounting holes.

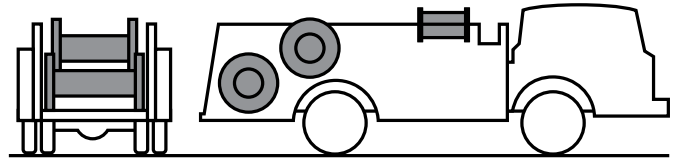
Series HDLD Reels and Spools Large Diameter

Reels and spools to handle up to 6" I.D. collapsible hose.

Typical Installations:



Single large-capacity reel installed in the hose bed area to handle long lengths of pre-coupled hose. Hose pays out from the top of the reel so gravity assists unwinding.



Two reels installed in the hose bed. In this arrangement, the upper reel is unloaded only if necessary. Payout and rewinding of the upper reels are facilitated by the position of the lower reel. Two reels with larger-diameter discs and narrower drums can also be installed side-by-side in the rear of the hose bed to handle approximately the same amount of hose. This method allows a center walkway or paying out two lines simultaneously if required.

- Square tubing frames.
- Heavy-gauge steel discs.
- Drums are formed by reinforced tie rods with radial supports.
- Pillow block ball bearings.
- Chain and sprocket rewind with hydraulic rewind motor.
- Hydraulic caliper disc brake.

Hydraulic Requirements

- It is important that the end-user provide Hannay Reels with complete specifications as to the required operation of the large diameter reel being specified. Any speed and torque requirements **MUST** be known to properly specify the correct reel for the application.
- Hannay Reels does not recommend specific brands for hydraulic system components. We suggest you work with your hydraulic component supplier to meet your specs.

Consult factory for complete specifications on an LD reel to meet your requirements.

Important: Hose capacity is based on the flat hose dimensions listed below, with couplings at 100 foot intervals.

Flat Hose Dimensions

I.D.	Thick x Width	
	in	mm
2"	3/4 x 3-1/2	19 x 89
2-1/2"	3/4 x 4	19 x 102
3"	1/2 x 5	13 x 127
4"	1/2 x 6-1/2	13 x 166
5"	1/2 x 8	13 x 204
6"	1/2 x 10	13 x 254

Custom sizes are available to meet specific needs.

Large
Diameter

Series HDLD Reels and Spools

Configurations

PARTS DRAWING – ISO 104

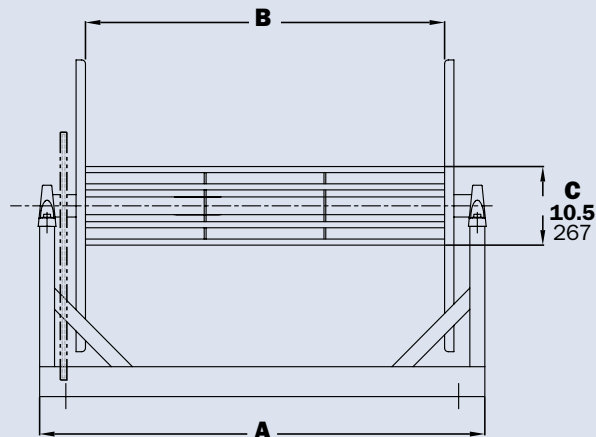
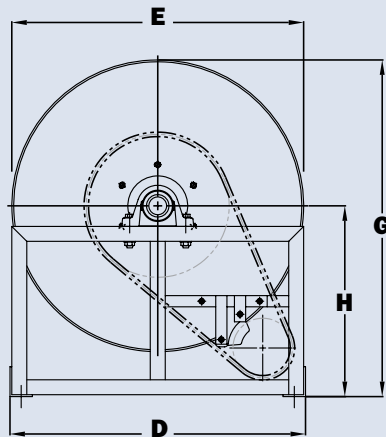
Model Number	Hose Capacity of Reel feet m							Approx. Weight (Steel) Crank Rewind lb. kg		Reel Dimensions in. mm					
	I.D. in. mm	2 51	2-1/2 64	3 76	4 102	5 127	6 152	NET	SHIP	A	B	D	E	G	H
HDLD234-39	350 107	350 107	400 122	300 91	200 61	–	–	365 166	465 211	31.5 800	20 508	39.5 1003	39 991	45 1143	25.5 648
HDLD242-39	600 183	500 152	500 152	400 122	300 91	–	–	381 173	481 218	39.5 1003	28 711	39.5 1003	39 991	45 1143	25.5 648
HDLD262-39	–	–	1100 335	800 244	600 183	–	–	421 191	521 236	59.5 1511	48 1219	39.5 1003	39 991	45 1143	25.5 648
HDLD274-39	–	–	–	1050 320	800 244	–	–	445 202	545 247	71.5 1816	60 1524	39.5 1003	39 991	45 1143	25.5 648
HDLD242-45	–	–	–	500 152	400 122	–	–	427 194	557 253	40 1016	28 711	45.5 1156	45 1143	51 1295	28.5 724
HDLD262-45	–	–	–	1100 335	900 274	–	–	467 212	597 271	60 1524	48 1219	45.5 1156	45 1143	51 1295	28.5 724
HDLD274-45	–	–	–	1400 427	1100 335	–	–	491 223	621 282	72 1829	60 1524	45.5 1156	45 1143	51 1295	28.5 724
HDLD242-52	–	–	–	800 244	500 152	300 91	–	581 264	731 332	40 1016	28 711	52.5 1334	52 1321	58 1473	32 813
HDLD262-52	–	–	–	1500 457	1300 396	800 244	–	621 282	771 350	60 1524	48 1219	52.5 1334	52 1321	58 1473	32 813
HDLD274-52	–	–	–	2000 610	1500 457	1200 366	–	645 283	795 361	72 1829	60 1524	52.5 1334	52 1321	58 1473	32 813
HDLD250-56	–	–	–	1300 396	1000 305	700 213	–	657 298	817 371	48 1219	36 914	56.5 1435	56 1422	62 1575	34 864
HDLD262-56	–	–	–	1800 549	1500 457	900 274	–	681 309	841 381	60 1524	48 1219	56.5 1435	56 1422	62 1575	34 864
HDLD274-56	–	–	–	2300 701	1700 518	1400 427	–	705 320	865 392	72 1829	60 1524	56.5 1435	56 1422	62 1575	34 864
HDLD350-64	–	–	–	1700 518	1300 396	900 274	–	1130 513	1330 603	50.25 1276	36 914	64.75 1645	64 1626	70 1778	38 965
HDLD374-64	–	–	–	3000 914	2000 610	1900 579	–	1200 544	1400 635	74.25 1886	60 1524	64.75 1645	64 1626	70 1778	38 965

Version F Reel:

Complete reel assembly with No. 50 chain and sprocket and hydraulic rewind motor mounted inside the frame. When ordering, prefix model number with HD (for example: HDLD 350-64 version F).

Notes:

- Specifications subject to change.
- Upon request, reels can be supplied with drum lengths other than shown and with disc sizes in other diameters.
- Be sure to check dimensions and weights prior to ordering.

VERSION F

Rescue Reels

Hannay Reels. Durable reels you can depend on.

When it's all on the line – Hannay reels are ready when you are. Our ruggedly designed and constructed rescue reels save space on your truck and help make your payout and pickup quicker and easier.

All of our reels are built to individual vehicle specs because we know that every truck manufacturer's design is different. Rely on Hannay Reels when you need to deliver big performance in tight spaces.

The rugged **1500 Series** hose reel is ideal for utility air (or breathing air when specified). The **1600 Series** reel handles live electric cable and is invaluable when you need power at the scene of an emergency.

The reels from the **2000, 2200, and 2500 Series** are all dual hose reels unsurpassed in rescue situations that require hydraulic hose for power tools such as cutters, spreaders, or jacks.



Summary of Standard and Optional Features for Rescue Reels

Series EF1500	Series ECR1600	Series EF2000	Series TEF
<ul style="list-style-type: none"> 12v motor (with switch, solenoid) 1/2" FNPT outlet riser 1/2" FNPT inlet swivel Utility air service Steel construction, graphite paint finish 	<ul style="list-style-type: none"> 12v motor (with switch, solenoid) 3-conductor slip ring Steel construction, graphite paint finish 	<ul style="list-style-type: none"> 12v motor (with switch, solenoid) Outlet risers provided per specified tool manufacturer 1/4" FNPT inlet swivel Steel construction, graphite paint finish 	<ul style="list-style-type: none"> Chain & sprocket drive with two electric gear motors Dual spools for two independent operations Removable chain guard Steel construction, graphite paint finish
Common Options <ul style="list-style-type: none"> 24v motor (with switch, solenoid) 3/8" or 1/4" outlet riser Breathing air service (up to 6000 psi with stainless steel internals) Polished stainless steel/chrome finish Hose guide rollers Hose and hose stop installed 	Common Options <ul style="list-style-type: none"> 24v motor (with switch, solenoid) 4-conductor or higher slip ring Polished stainless steel/chrome finish Cable guide rollers Cable, plug, and cable stop installed 	Common Options <ul style="list-style-type: none"> 24v motor (with switch, solenoid) Polished stainless steel/chrome finish Hose guide rollers Twin hose and hose stop installed 	Common Options <ul style="list-style-type: none"> Hose/cable guide rollers with adjustable positions TEF2500 outlet risers provided per specified tool manufacturer TEF1600 3-conductor slip ring standard, 4-conductor or higher optional TEF1500 utility air standard, breathing air service (up to 6000 psi with stainless steel internals)
Model Prefixes <ul style="list-style-type: none"> EF Standard frame, utility air EFL Standard frame, low pressure breathing air EFH Standard frame, high pressure breathing air ELF Low height, utility air ELFL Low height, low pressure breathing air ELFH Low height, high pressure breathing air ESF Minimized depth, utility air ESFL Minimized depth, low pressure breathing air ESFH Minimized depth, high pressure breathing air 	Model Prefixes <ul style="list-style-type: none"> ECR Standard frame, live cord ELFCR Low height, live cord ESFCR Minimized depth, live cord 	Model Prefixes <ul style="list-style-type: none"> EF2000 Standard frame, twin hydraulic ELF2000 Low height, twin hydraulic ESF2000 Minimized depth, twin hydraulic EF2200 Holmatro CORE hose only 	Model Prefixes <ul style="list-style-type: none"> TEF2500 Dual spools, twin hydraulic TEF1600 Dual spools, electric cable TEF1500 Dual spools, pneumatic <p>Can be built in any combination. See pages 3, 4 & 5 or consult factory for specifications and quote.</p>
Mounting Hole Sizes			
N Series Reels		7/16" wide x 7/8" long slot running front to back	
Pressed Frame Reels and Channel Framed Reels		7/16" wide x 7/8" long slot running left to right	
Series 1500, 1600, 2000		13/32" round holes	

Series **FN700**

• Utility Air or Breathing Air Hose

To handle 3/16" through 1/2" I.D. hose.

- Heavy-duty spring motor.
- Narrow frame and compact mounting base.
- Non-sparking ratchet assembly.
- Declutching arbor to prevent damage from reverse winding.
- ** Standard inlet: 90° balanced pressure swivel joint, 1/2" female NPT threads.
Full flow swivel joint required for breathing air (FLN and FHN).
- ** Standard outlet: 1/2" female NPT threads.
Other sizes and threads can be furnished and must be specified.
- FN and FLN700 reels: pressures to 3000 psi (207 bar).
- FHN700 reels: pressures up to 6000 psi (414 bar).
- Standard fluid temperatures from -40° F to +250 °F (-40° C to +121° C).
- Consult factory for other pressures and temperatures.
- 4-way roller assembly is standard. Roller position must be specified.
- Constant tension is available – consult factory.
- Hose stop required. Order Part No. 9922.0200. Must specify hose O.D.



Standard SR configuration shown
with optional stainless steel full flow swivel joint for breathing air

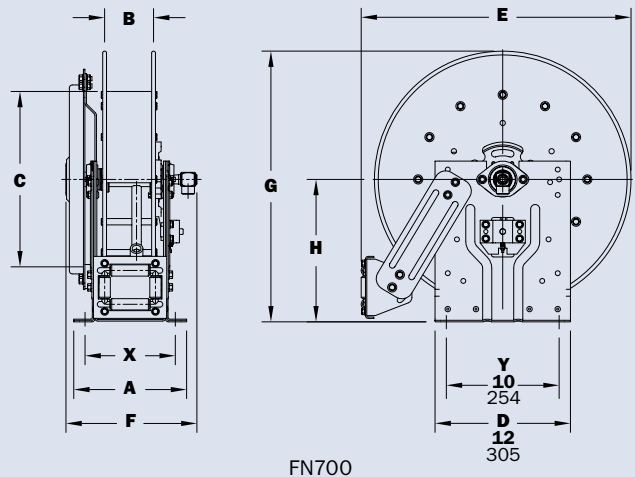
PARTS DRAWING – ISO 79

Model Number	Hose Capacity of Reel feet m					Approx. Weight lb. kg		Roller Assembly Supplied on Standard Models	Reel Dimensions In. mm X/Y indicate mounting holes							
	I.D. in. mm	3/16 5	1/4 6	3/8 10	1/2 13	NET	SHIP		A	B	C	E	F	G	H	X
	O.D. in. mm	.42 11	.50 13	.64 16	.88 22											
FN716-14-16-8C	25	25	30	25		52	87*	N204	10	4	8	18.12	11.63	16.12	9.12	8
	8	8	9	8		24	39		254	102	203	460	295	409	232	203
FN716-16-17-10.5C	30	35	35	30		55	90*	N204	10	4	10.5	19	11.63	17	9.12	8
	9	11	11	9		25	41		254	102	267	483	295	432	232	203
FN716-19-20-10.5J	35	50	50	50		64	99*	N204	10	4	10.5	20.75	11.63	20	10.62	8
	11	15	15	15		29	45		254	102	267	527	295	508	270	203
FN715-23-24-15.5J	75	75	75	50		79	89*	N203	9	3	15.5	24	10.63	24	12.62	7
	23	23	23	15		36	40		229	76	394	610	270	610	321	178
FN716-23-24-15.5G	100	100	100	65		94	109	N204	10	4	15.5	24	11.63	24	12.62	8
	30	30	30	20		43	49		254	102	394	610	295	610	321	203
FN718-25-26-15.5G	-	-	-	100		98	133	N206	12	6	15.5	25.5	13.63	26	13.62	10
	-	-	-	30		44	60		305	152	394	648	346	660	354	254

Notes:

- Specifications subject to change.
 - Reel models and capacities shown are for standard drag applications; for vertical lift or constant tension applications, consult factory.
 - Other sizes, from standard components, available on request.
 - Model Designations:
FN = Utility air applications
FLN = Low pressure breathing air applications. Add 1.12" to F dimension.
FHN = High pressure breathing air systems (6000 psi). Add 1.5" to F dimension.
For example: **FHN 716-14-16C** is a high pressure breathing air reel.
 - Be sure to check dimensions and weights prior to ordering.
- NOTICE:** A flexible connector must be used between the inlet pipe and the inlet swivel joint.
*Dimensional weight applies when shipped as a parcel package (via FedEx or UPS Ground).
** Stainless steel internals are required for breathing air applications.

Available Roller Positions



Series TEF

• Power Rescue Tools • Hydraulics • Utility or Breathing Air • Electric Cable

Series TEF reels can be built in any combination of hydraulic, air or electric cable applications.

TEF2500 SERIES: To handle dual hydraulic 1/4" I.D. hose.

- Chain and sprocket drive powered by an electric gear motor.
- Standard inlets: Two 90° dual passage swivel joints with 1/4" female NPT threads.
- Standard outlets: Rescue tool manufacturer must be specified to determine threads and packing material required.
- Pressures to 10,500 psi (724 bar).
- Standard fluid temperatures from -40° F to +250 °F (-40° C to +121° C). Optional temperature ratings available - consult factory.
- Dual spools to operate 2 independent hydraulic rescue tools.
- Removable chain guard for added safety and easy maintenance.
- Optional 4-way rollers and mounting brackets available with adjustable positions including: forward-facing, vertically-facing and 30° angle.



TEF2500 Series

Standard configuration shown with optional rollers in Bumper Mount position

TEF1500 SERIES: To handle single 1/4", 3/8", and 1/2" I.D. hose.

- Chain and sprocket drive powered by an electric gear motor.
- **Standard inlet: 90° ball bearing swivel joint, 1/2" female NPT threads.
- **Standard outlet: 1/2" female NPT threads. Other sizes and threads can be furnished and must be specified.
- Available for Low PSI breathing air to 3000 psi (207 bar) and High PSI breathing air to 6000 psi (414 bar). See Notes 3 & 4 below for model and dimension specifications.
- Standard fluid temperatures from -15° F to +250 °F (-26° C to +121° C). Optional temperature ratings available - consult factory
- Dual spools to operate 2 independent air hoses.
- Removable chain guard for added safety and easy maintenance.
- Optional 4-way rollers and mounting brackets available with adjustable positions including: forward-facing, vertically-facing and 30° angle.



TEF1500 Series

Standard configuration shown with optional rollers in 30 Degree Tipped position

TEF1600 SERIES: To handle live electric cable.

- Chain and sprocket drive powered by an electric gear motor.
- 3-conductor, 30-amp collector assembly with #10 gauge wiring.
- Optional 4-conductor available, must specify.
- Dual spools to operate 2 independent electric power tools.
- Removable chain guard for added safety and easy maintenance.
- Optional 4-way rollers and mounting brackets available with adjustable positions including: forward-facing, vertically-facing and 30° angle.



TEF1600 Series

Standard configuration shown with optional rollers in 30 Degree Tipped position



Optional 4-way Rollers with adjustable positions available, see available roller positions below. Consult factory for specifications.

Series **TEF**

• Power Rescue Tools • Hydraulics • Utility or Breathing Air • Electric Cable

Model Number	Hose Capacity of Reel feet m		Approx. Weight lb. kg		Reel Dimensions*** in. mm			
	I.D. in. mm	1/4 6	NET	SHIP	A	B	F	X
	O.D. in. mm	17/32 13.5						
TEF2516-17-18		2/100 2/30	95 43	110* 50	21.25 540	8 203	26.75 679	20.25 514

Model Number	Hose Capacity of Reel feet m HP = High pressure breathing air hose						Approx. Weight lb. kg		Reel Dimensions*** in. mm			
	I.D. in. mm	1/4 6	3/8 10	1/2 13	NET	SHIP	A	B	F	X		
	O.D. in. mm	5/8 16	1/2 HP 13 HP	3/4 19								
TEF1514-17-18		175 53	300 91	125 38	175 53	75 23	88 40	109* 49	17.25 438	6 152	21 533	16.25 413
TEF1516-17-18		250 76	400 122	175 53	250 76	125 38	93 42	108* 49	21.25 540	8 203	25 635	20.25 514
TEF1520-17-18		350 107	600 183	275 84	400 122	175 53	103 47	118* 54	29.25 743	12 305	33 838	28.25 718

Model Number	Cable Capacity of Reel feet m					Approx. Weight lb. kg		Reel Dimensions*** in. mm			
	Ga./No. of Conductors					NET	SHIP	A	B	F	X
	O.D. in. O.D. mm	12/3 .60 15	10/3 .69 18	12/4 .67 17	10/4 .75 19						
TEF1614-17-18		175 53	100 30	---	---	87 39	102* 46	17.25 438	6 152	22.63 575	16.25 413
TEF1616-17-18		200 61	150 46	150 46	150 46	92 42	107* 48	21.25 540	8 203	26.63 676	20.25 514
TEF1618-17-18		275 84	200 61	200 61	200 61	97 44	112* 51	25.25 641	10 254	30.63 778	24.25 616
TEF1620-17-18		350 107	250 76	250 76	225 69	102 46	117* 53	29.25 743	12 305	34.63 880	28.25 718
TEF1622-17-18		400 122	300 91	300 91	275 84	107 49	122* 55	33.25 845	14 356	38.63 981	32.25 819

Notes:

- Specifications subject to change.
- Be sure to check dimensions and weights prior to ordering.

NOTICE: A flexible connector must be used between the inlet pipe and the inlet swivel joint.

* Dimensional weight applies when shipped as a parcel package (via FedEx or UPS Ground).

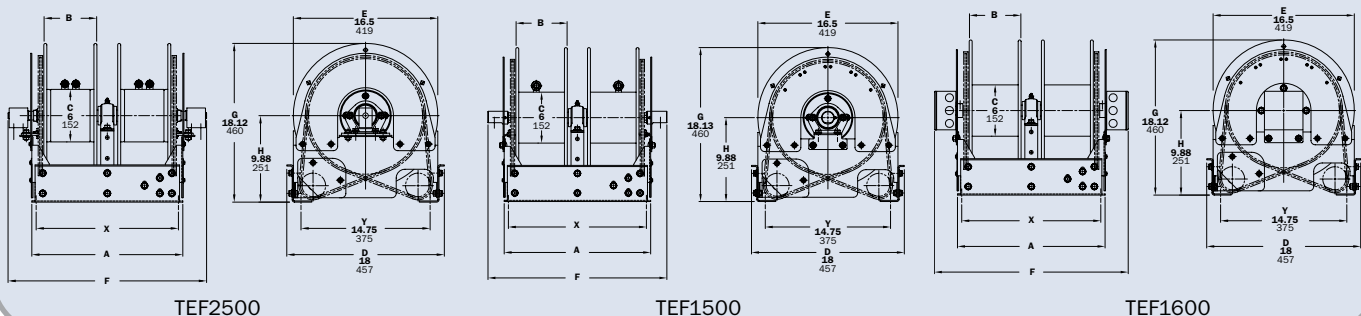
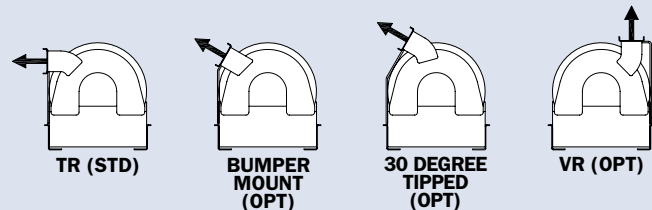
** Stainless steel internals are required for breathing air applications.

*** X, Y indicate mounting holes. See page 18.

TEF 1500 SERIES:

• For Low PSI breathing air to 3000 psi (207 bar), prefix model number with "TEFL" and add 3/8" to F dimension for **each** spool.

• For High PSI breathing air to 6000 psi (414 bar), prefix model number with "TEHF" and add 1" to F dimension for **each** spool.

Available Roller Positions

Series **F1500/FL1500/FH1500**

• Utility Air or Breathing Air Hose

To handle single 1/4", 3/8", and 1/2" I.D. hose.

- Lightweight, compact reels designed for long lengths of hose in manual and power rewind.
- Manual rewind reels include: cam-lock drag brake, spring actuated pin lock and direct crank rewind.
- Power rewind reels include: chain and sprocket drive powered by electric or compressed air motor.
- ** Standard inlet: 90° ball bearing swivel joint, 1/2" female NPT threads.
- ** Standard outlet: 1/2" female NPT threads. Other sizes and threads can be furnished and must be specified.
- Roller and roller mounting brackets are accessory items. Specify roller position.
- F and FL1500 reels: pressures to 3000 psi (207 bar).
- FH1500 reels: pressures up to 6000 psi (414 bar).
- Standard fluid temperatures from -40° F to +250° F (-40° C to +121° C). Optional temperature ratings available - consult factory.



Standard configuration shown with Electric Rewind (E) option and optional hose package



Optional External Mounting Brackets

Part No. 9906.0027.

Add 2-1/2" to the X dimensions shown in the chart.

PARTS DRAWING – ISO 90

Model Number	Hose Capacity of Reel feet m						Approx. Weight Crank Rewind lb. kg		Reel Dimensions*** in. mm						
	HP = High pressure breathing air hose						NET	SHIP	A	B	E CRANK	E POWER	F CRANK	F POWER	X
	I.D. in. mm	1/4 6	3/8 10	1/2 13											
	O.D. in. mm	5/8 16	1/2 HP 13 HP	3/4 19	21/32 HP 17 HP	7/8 22									
F1514-17-18		175 53	300 91	125 38	175 53	75 23	27 12	65* 30	11 279	6 152	17.5 445	19 483	19.25 489	17 432	9.5 241
F1516-17-18		250 76	400 122	175 53	250 76	125 38	28 13	68* 31	13 330	8 203	17.5 445	19 483	21.25 540	19 483	11.5 292
F1520-17-18		350 107	600 183	275 84	400 122	175 53	29 13	80* 36	17 432	12 305	17.5 419	19 483	25.25 641	23 584	15.5 394

Notes:

1. Specifications subject to change.
2. Upon request, reels can be supplied with drum lengths other than shown and with disc sizes in other diameters.
3. Weights shown in chart are for manual rewind models. Add these amounts for power rewind models (does not apply to FedEx or UPS):

	Net lbs/kg	Ship lbs/kg
Electric	18/8.2	18/8.2
Air	15/6.8	15/6.8

4. When ordering power rewind models, prefix model number with:

A = Air Rewind
E = Electric Rewind

(Air rewind reels are supplied with control valve and 18" air hose; 12v and 24v DC rewind reels are supplied with switch and solenoid.)

5. Model Designations:

F1500 = Utility Air Applications

FL1500 = Low Pressure Breathing Air Applications

FH1500 = High Pressure Breathing Air Cascade Systems

For example: **EFL1514-17-18**=Electric Rewind, Low Pressure Breathing Air.

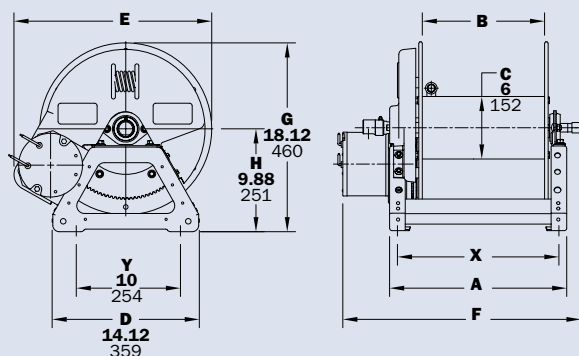
6. Add 2-1/2" to "E" dimension and 1/2" to "G" dimension with assembly "C" roller installed in top wind (TR) position.
7. Manual rewind available in RT or LB configurations only.
8. Be sure to check dimensions and weights prior to ordering.
9. Some roller options may prohibit the use of our molded chain guard.

NOTICE: A flexible connector must be used between the inlet pipe and the inlet swivel joint.

* Dimensional weight applies when shipped as a parcel package (via FedEx or UPS Ground).

** Stainless steel internals are required for breathing air applications.

*** X, Y indicate mounting holes. See page 18.



Series ELF1500/ESF1500

• Utility Air or Breathing Air Hose

To handle 1/4", 3/8", and 1/2" I.D. hose.

- Chain and sprocket drive powered by an electric gear motor.
- ** Standard inlet: 90° swivel joint with 1/2" female NPT threads.
- ** Standard outlet: 1/2" female NPT thread.
- Other sizes/threads can be furnished and must be specified.
- ELF and ESF1500 reels: pressures to 3000 psi (207 bar).
- ELFL and ESFL1500 reels: pressures to 3000 psi (207 bar).
- ELFH and ESFH1500 reels: pressures to 6000 psi (414 bar).
- Standard fluid temperatures from -40° F to +250 °F (-40° C to +121° C). Optional temperature ratings available - consult factory.



◀ **ELFH1500 shown**
Choose an ELF model when **height** of reel must be minimized

ESFH1500 shown ▶
Choose an ESF model when **depth** of reel must be minimized

PARTS DRAWING – ELF1500 - ISO 227; ESF1500 - ISO 228

Model Number	Hose Capacity of Reel feet m						Approx. Weight power rewind lb. kg		Reel Dimensions*** in. mm									
	HP = High pressure breathing air hose								NET	SHIP	A	B	C	D	E	F	G	H
	I.D. in. mm	1/4 6		3/8 10		1/2 13												
	O.D. in. mm	5/8 16	1/2 HP 13 HP	3/4 19	2 1/2 HP 17 HP	7/8 22												
ELF1514-14-16	100	175	75	100	50	39	65*	11.5	6	6	15.5	20	15.25	14.5	7.5	5.75	11.75	
	31	53	23	30	15	18	30	292	152	152	394	508	386	368	191	146	298	
ELF1516-14-16	150	250	100	150	75	41	65*	13.5	8	6	15.5	20	17.25	14.5	7.5	7.75	11.75	
	46	76	31	46	23	19	30	343	203	152	394	508	437	368	191	197	298	
ELF1520-14-16	225	400	175	200	100	45	80*	17.5	12	6	15.5	20	21.25	14.5	7.5	9	11.75	
	69	122	53	61	31	20	36	445	305	152	394	508	538	368	191	229	298	
ESF1514-14-16	100	175	75	100	50	42	58*	11.63	6	6	11.5	14	15.25	20.5	13.5	5.75	7.75	
	31	53	23	30	15	19	26	295	152	152	292	356	386	521	343	146	197	
ESF1516-14-16	150	250	100	150	75	44	58*	13.63	8	6	11.5	14	17.25	20.5	13.5	7.75	7.75	
	46	76	31	46	23	20	26	346	203	152	292	356	437	521	343	197	197	
ESF1520-14-16	225	400	175	200	100	48	65*	17.63	12	6	11.5	14	21.25	20.5	13.5	9	7.75	
	69	122	53	61	31	22	30	448	305	152	292	356	538	521	343	229	197	

Notes:

1. Specifications subject to change.
2. Upon request, reels can be supplied with drum lengths other than shown.
3. 12v and 24v DC rewind reels supplied with switch and circuit breaker.

4. Model Designations:

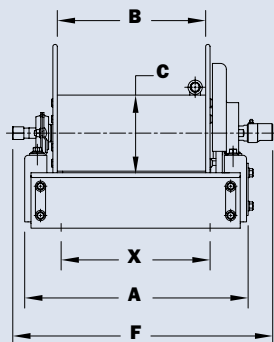
- ELF or ESF = Utility Air Applications
- ELFL or ESFL = Low Pressure Breathing Air Applications
- ELFH or ESFH = High Pressure Breathing Air Cascade Systems
- 5. Be sure to check dimensions and weights prior to ordering.

NOTICE: A flexible connector must be used between the inlet pipe and the inlet swivel joint.

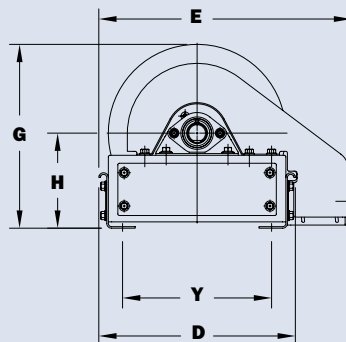
* Dimensional weight applies when shipped as a parcel package (via FedEx or UPS Ground).

** Stainless steel internals are required for breathing air applications.

*** X, Y indicate mounting holes. See page 18.



ELF1500



ESF1500

Series EF2000 | Dual Hose

• Power Rescue Tools • Hydraulics

To handle dual 1/4" I.D. hose.

- Two swivel joint inlets and two outlet risers to handle two equal lengths of hose.
- Chain and sprocket rewind powered by an electric motor.
- Optional drag brake is available. Add 3/4" to the "F" dimension shown in the chart.
- Standard inlets: 90° swivel joints, 1/4" female NPT threads.
- Standard outlets: Rescue tool manufacturer must be specified to determine threads and packing material required.
- Pressures to 10,500 psi (724 bar).
- Standard fluid temperatures from -40° F to +250 °F (-40° C to +121° C). Optional temperature ratings available - consult factory.
- Rollers and roller mounting brackets are accessory items. Specify roller position.
- Polished stainless steel discs and sprocket with chrome frame are available, consult factory.



Standard configuration shown

Optional Models Available – consult factory for specifications

ELF2000 when height of reel must be minimized

ESF2000 when depth of reel must be minimized



Optional External Mounting Brackets

Part No. 9906.0027.

Add 2-1/2" to the X dimensions shown in the chart.

PARTS DRAWING – ISO 101

Model Number For power rewind see Note 4	Hose Capacity of Reel feet m NOTE: 1 inch = 25.4 mm		Approx. Weight lb. kg		Reel Dimensions*** in. mm				
	I.D. in. mm	1/4 6	NET	SHIP	A	B	E POWER	F** POWER	X
	O.D. in. mm	.53 13.5							
EF2016-17-18		2/100 2/31	50 23	80* 36	13 330	8 203	19 483	18.88 480	11.5 292
Notes: 1. Specifications subject to change. 2. Upon request, reels can be supplied with drum lengths other than shown and with disc sizes in other diameters. 3. 12v and 24v DC rewind reels are supplied with switch and solenoid. 4. Add 2-1/2" to "E" dimension and 1/2" to "G" dimension with assembly "C" roller installed in top wind (TR) position. 5. Be sure to check dimensions and weights prior to ordering. 6. Some roller options may prohibit the use of our molded chain guard.					NOTICE: A flexible connector must be used between the inlet pipe and the inlet swivel joint. * Dimensional weight applies when shipped as a parcel package (via FedEx or UPS Ground). ** Swivel joints required for Hurst Systems increase the "F" dimension. Add 3/8" for power rewind. *** X, Y indicate mounting holes. See page 18.				

Dual Hose | Series **EF2200**

• For **CORE™** Hydraulic Dual Hose Rescue Tools

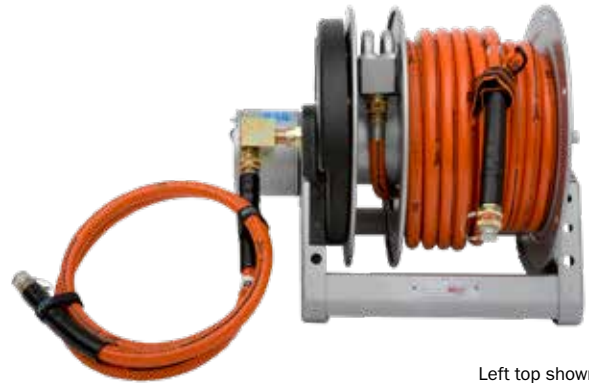
To handle hydraulic Holmatro **CORE Technology™** coaxial twin hose.

- Lighter weight hose and single fitting connection when compared with traditional rescue tool hose.
- Chain and sprocket drive powered by an electric motor.
- Adjustable spring drag brake standard on all models.
- CORE Technology™ swivel joint inlet and fluid path.
- Optional factory installed 4-way roller guide available.
- Standard pressures to 10,500 psi (724 bar).
- Standard fluid temperatures from -30°F to +225°F (-34°C to +107°C).
- Divider disc separates hose from adapter block outlet.
- Optional polished stainless steel discs and sprocket with chrome frame.



Optional External Mounting Brackets

Part No. 9906.0027.
Add 2-1/2" to the X dimensions shown in the chart.



Left top shown
Lead-in hose is optional



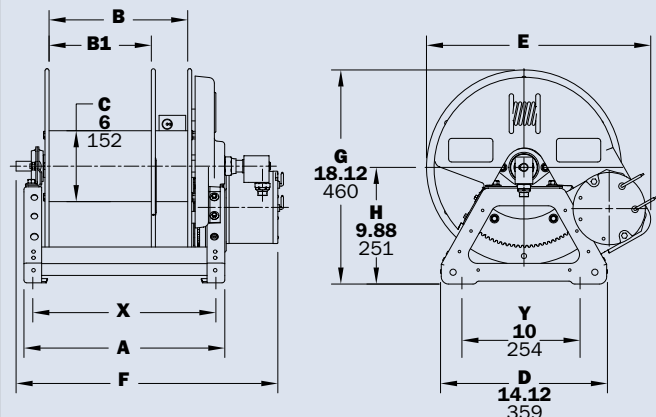
Optional roller assembly C2 shown

PARTS DRAWING – ISO 217

Model Number	Hose Capacity of Reel feet m		Approx. Weight lb. kg		Reel Dimensions*** in. mm					
	CORE Technology™ Coaxial Hose		NET	SHIP	A	B	B1	E	F	X
	O.D. in. mm	7/8 22								
EF2216-17-18	1/60		87	122	13	8	5	19	18.25	11.5
	1/18		39	55	330	203	127	483	464	292
EF2220-17-18	1/100		89	124	17	12	9	19	22.25	15.5
	1/31		40	56	432	305	229	483	565	394

Notes:

1. Specifications subject to change.
 2. Electric rewind models available in either 12v or 24v DC.
Reels supplied with switch and solenoid.
 3. Add 2-1/2" to "E" dimension and 1/2" to "G" dimension with assembly "C2" roller installed in top wind position.
 4. **Be sure to check all dimensions and weights prior to ordering.**
Must specify right- or left-hand configurations.
 5. Above reels cannot be shipped via UPS or FedEx Ground.
 6. Some roller options may prohibit the use of our molded chain guard.
- *** X, Y indicate mounting holes. See page 18.



Right top configuration shown

Series **CR1600**

• Electric Cable • On-site Power

To handle live electric cable.

- Choose removable crank rewind or chain and sprocket drive powered by an electric or compressed air motor.
- Adjustable cam-lock brake on crank rewind models.
- Optional strap brake available on power rewind models.
- 3-conductor, 45-amp collector assembly with #8 gauge wiring.
- Consult factory for additional conductors available at extra cost.
- Rollers and roller mounting brackets are accessory items. Specify roller position.



Standard configuration shown with Electric Rewind (E) option and optional cable package

PARTS DRAWING – ISO 76

Model Number For power rewind see Note 4	Cable Capacity of Reel feet m					Approx. Weight Crank Rewind lb. kg		Reel Dimensions*** in. mm						
		Ga./No. of Conductors (4-cond see Note 7)												
	O.D. in O.D. mm	12/3 .60 15	10/3 .69 18	12/4 .67 17	10/4 .75 19	NET	SHIP	A	B	E CRANK	E POWER	F CRANK	F POWER	X
CR1614-17-18	175	100	100	100	30	65*	11	6	16.5	19	23.12	17.12	9.5	
	53	30	30	30	14	30	279	152	419	483	587	435	241	
CR1616-17-18	200	150	150	150	32	68*	13	8	16.5	19	25.12	19.12	11.5	
	61	46	46	46	15	31	330	203	419	483	638	486	292	
CR1618-17-18	275	200	200	200	33	80*	15	10	16.5	19	27.12	21.12	13.5	
	84	61	61	61	15	36	381	254	419	483	689	536	343	
CR1620-17-18	350	250	250	225	34	80*	17	12	16.5	19	29.12	23.12	15.5	
	107	76	76	69	15	36	432	305	419	483	740	587	394	
CR1622-17-18	400	300	300	275	35	98*	19	14	16.5	19	31.12	27.87	17.5	
	122	91	91	84	16	45	483	356	419	483	790	708	445	

Notes:

1. Specifications subject to change.
2. Upon request, reels can be supplied with drum lengths other than shown and with disc sizes in other diameters.
3. Weights shown in chart are for manual rewind models. Add these amounts for power rewind models (does not apply to FedEx or UPS):

	Net lbs/kg	Ship lbs/kg
Electric	18/8.2	18/8.2
Air	15/6.8	15/6.8

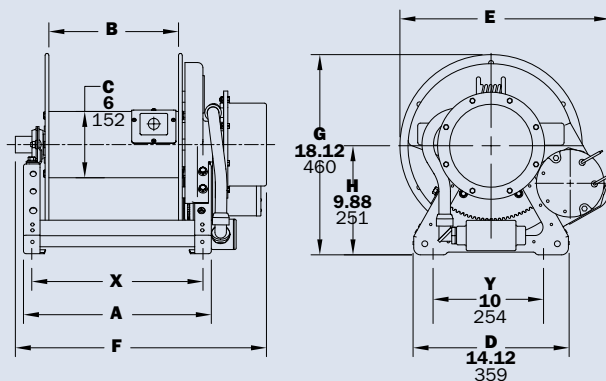
4. When ordering power rewind models, prefix model number with:

A = Air Rewind
E = Electric Rewind

(Air rewind reels are supplied with control valve and 18" air hose; 12v and 24v DC rewind reels are supplied with switch and solenoid.)

5. For reels with 4 conductors, 45-amp collector assemblies, add 2" to "F" dimension.
 6. Add 2-1/2" to "E" dimension and 1/2" to "G" dimension with assembly "C" roller installed in top wind (TR) position.
 7. **Be sure to check dimensions and weights prior to ordering.**
 8. Some roller options may prohibit the use of our molded chain guard.
- * Dimensional weight applies when shipped as a parcel package (via FedEx or UPS Ground).

***X, Y indicate mounting holes. See page 18.



Cable Selections

Power/Control Cable		
Wire Size (AWG)/ Conductors	Area (Per Conductor)	
	Circ. mils	Sq. mm
12/3 or 12/4	6500	3.3
10/3 or 10/4	10,500	5.3

Connector Options

Straight Blade (3 or 4 blade available)	Twist Lock (3 or 4 blade available)
--	--

Straight blade or twist lock connectors and plugs can be supplied.

Be sure to specify amperage, voltage, and NEMA designation.



Optional External Mounting Brackets

Part No. 9906.0027.

Add 2-1/2" to the X dimensions shown in the chart.

Series ELFCR1600/ESFCR1600

• Electric Cable • On-site Power

To handle live electric cable.

- Chain and sprocket drive powered by an electric gear motor.
- 3-conductor, 30-amp collector assembly with #10 gauge wiring.
- 4-conductor can be specified as an option.



ELFCR1600
extra low profile shown
Choose when height and depth
of reel must be minimized



ELFCR1600 shown
Choose an ELFCR model when
height of reel must be minimized



ESFCR1600 shown
Choose an ESFCR model when
depth of reel must be minimized

PARTS DRAWING – ELFCR1600 - ISO 229; ESFCR1600 - ISO 230

Model Number	Cable Capacity of Reel feet m					Approx. Weight Power Rewind lb. kg		Reel Dimensions*** in. mm									
		Ga./No. of Conductors															
		12/3	10/3	12/4	10/4			NET	SHIP	A	B	C	D	E	F	G	H
	O.D. in O.D. mm	.60 15	.69 18	.67 17	.75 19												
ELFCR1624-10-11-6	150	100	100	100	47	80*	21	16	6	14	18	23.5	11.25	5.875	13.5	10.25	
	46	31	31	31	21	36	533	406	152	356	457	597	286	149	343	260	
ELFCR1636-10-11-6	250	200	200	200	53	95**	33	28	6	14	18	35.5	11.25	5.875	25.5	10.25	
	76	61	61	61	24	43	838	711	152	356	457	902	286	149	648	260	
ELFCR1616-14-16	150	100	100	100	42	65*	13.5	8	6	15.5	20	16.3	14.5	7.5	7.75	11.75	
	46	31	31	31	19	30	343	203	152	394	508	413	368	191	197	298	
ELFCR1618-14-16	200	125	125	125	43	65*	15.5	10	6	15.5	20	18.3	14.5	7.5	7	11.75	
	61	38	38	38	20	30	394	254	152	394	508	464	368	191	178	298	
ELFCR1620-14-16	250	175	175	150	44	80*	17.5	12	6	15.5	20	20.3	14.5	7.5	9	11.75	
	76	53	53	46	20	36	445	305	152	394	508	514	368	191	229	298	
ELFCR1622-14-16	–	200	200	175	45	80*	19.5	14	6	15.5	20	22.3	14.5	7.5	11	11.75	
	–	61	61	53	20	36	495	356	152	394	508	565	368	191	279	298	
ESFCR1616-14-16	150	100	100	100	44	58*	13.5	8	6	11.5	14	16.3	20.5	13.5	7.75	7.75	
	46	31	31	31	20	26	346	203	152	292	356	413	521	343	197	197	
ESFCR1618-14-16	200	125	125	125	46	58*	15.5	10	6	11.5	14	18.3	20.5	13.5	7	7.75	
	61	38	38	38	21	26	397	254	152	292	356	464	521	343	178	197	
ESFCR1620-14-16	250	175	175	150	47	65*	17.5	12	6	11.5	14	20.3	20.5	13.5	9	7.75	
	76	53	53	46	21	30	448	305	152	292	356	514	521	343	229	197	
ESFCR1622-14-16	–	200	200	175	48	80*	19.5	14	6	11.5	14	22.3	20.5	13.5	11	7.75	
	–	61	61	53	22	36	499	356	152	292	356	565	521	343	279	197	

Notes:

1. Specifications subject to change.

2. Upon request, reels can be supplied with drum lengths other than shown.

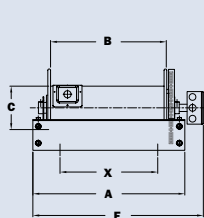
3. 12v and 24v DC rewind reels supplied with switch and circuit breaker.

4. Be sure to check dimensions and weights prior to ordering.

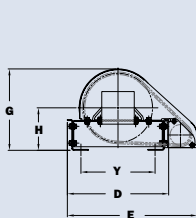
* Dimensional weight applies when shipped as a parcel package (via FedEx or UPS Ground).

** Model ELFCR1636-10-11-6 is shipped via freight only - No UPS or FedEx ground.

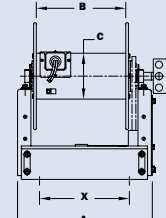
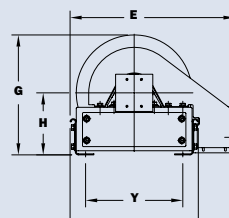
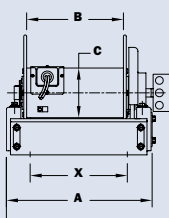
*** X, Y indicate mounting holes. See page 18.



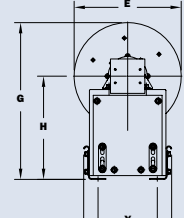
ELFCR1600 extra low profile



ELFCR1600



ESFCR1600



Series **CR16-14-16**

• Portable • On-site Electric Power Cable

Portable Electric Cable Reels

- Compact, lightweight.
- Rugged construction.
- Large capacity.
- 3-conductor collector ring assembly.
- 6-foot power source lead of 12/3 cable.
- 15-amp straight blade plug (15-amp or 20-amp twist lock optional).
- Adjustable cam-lock brake.
- Permanent crank rewind handle.



Optional 15-amp, 3-prong
straight blade receptacle
recessed in drum.

Part No. 9955.0090



PARTS DRAWING – ISO 156

Model Number	Cable Capacity of Reel feet m				Approx. Weight lb. kg		Reel Dimensions in. mm							
	O.D. in O.D. mm	Ga./No. of Conductors					A	B	C	D	E	F	G	H
		16/3	14/3	12/3										
CR16-14-16		400	200	150	24	58*	9.53	7.5	6	15.5	14	14.5	20	9.08
		122	61	46	11	26	242	190	152	394	356	368	508	231

Notes:

1. Specifications subject to change.

2. **Be sure to check dimensions and weights prior to ordering.**

* Dimensional weight applies when shipped as a parcel package (via FedEx or UPS Ground).

The technical drawing illustrates the CR16-14-16 reel from two perspectives: a side view and a front view. The side view on the left shows the reel's profile with dimensions A (total width), B (width of the top support), C (height of the cable support), D (width of the base), E (height of the reel body), F (height of the top support), G (height of the reel body), and H (height of the base). The front view on the right shows the reel's circular face with dimensions A (total width), B (width of the top support), C (height of the cable support), D (width of the base), E (height of the reel body), F (height of the top support), G (height of the reel body), and H (height of the base).

Model C16-10-11/C20-14-16

• Extension Cord • Rope • Forestry Fire Hose

No live connections.

Model C16-10-11

- Small, lightweight, durable.
- Adjustable cam-lock drag brake.
- Optional storage drum extension.
- One durable rubber twist tie for cable ends. "DE" models equipped with two ties.

Model C20-14-16

- Strong, portable.
- Adjustable cam-lock drag brake.
- Permanent crank rewind.
- Optional pin lock available.
- Optional storage drum extension.
- One durable rubber twist tie for cable ends. "DE" models equipped with two ties.

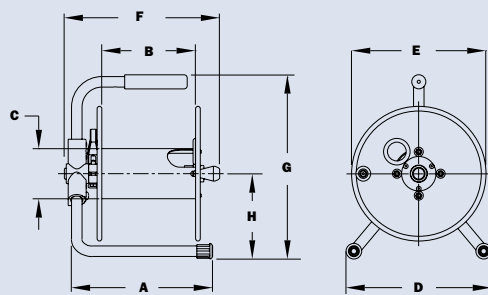
C16-10-11 ▶

C20-14-16 ▶

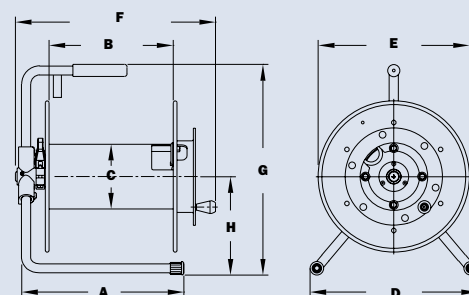
C16-10-11-DE ▶
(DE = Drum Extension)

PARTS DRAWING – MODEL C16-10-11 – ISO 88; MODEL C20-14-16 – ISO 121

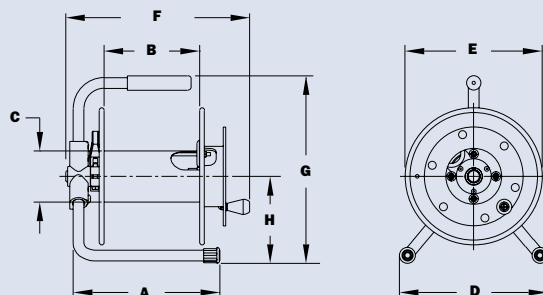
Model Number	Cable Capacity of Reel feet m			Approx. Weight lb. kg		Reel Dimensions in. mm							
		Ga./No. of Conductors 14/3 12/3											
	O.D. in. mm	.53 14	.60 15	NET	SHIP	A	B	C	D	E	F	G	H
C16-10-11	125	100	10	20*	11.5	7.5	4	11.88	10.75	12.25	14.75	6.88	
	38	30	5	8	292	191	102	302	273	311	375	175	
C20-14-16	350	250	18	58*	15	12	6	15.5	14	16.75	19	8.62	
	107	76	8	26	381	305	152	394	356	425	483	219	
C16-10-11-DE	130	105	10	20*	11.5	7.5	4	11.88	10.75	14.25	14.75	6.88	
	40	32	5	8	292	191	102	302	273	362	375	175	
C20-14-16-DE	355	255	18	58*	15	12	6	15.5	14	18.75	19	8.62	
	108	78	8	26	381	305	152	394	356	476	483	219	



Model C16-10-11



Model C20-14-16DE



Model C16-10-11DE

Notes:

1. Specifications subject to change.
2. These storage reels have no live connections.
3. **Be sure to check dimensions and weights prior to ordering.**

*Dimensional weight applies when shipped as a parcel package (via FedEx or UPS Ground).



LC16-10-11 includes one durable rubber twist tie for cable ends.

Part No. 9949.0082

Rescue Reel Accessories

• Utility Hose Rollers • Circuit Breakers • Speed Control Accessories

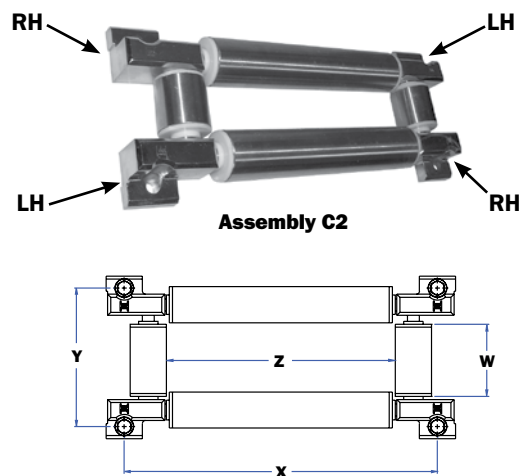
Utility Hose Rollers

Stainless steel rollers and cast alloy mounting blocks for use on the reel, on cabinet door openings, truck platforms, and similar locations where sharp edges may cut or damage hose or cable.

Specifications: 1-1/2" diameter stainless steel rollers, stainless steel rod, Delrin bearings, plated mounting blocks, and fasteners.

To Order: If the rollers are to be mounted on a Hannay reel, just give the model number of the reel. If the rollers are to be mounted separately from the reel, give the horizontal and vertical roller lengths desired (dimensions Z and W), or the horizontal and vertical distances desired between mounting holes (dimensions X and Y).

Also available factory installed on the reel. See Hannay parts list ISO-115 for further information.



RCB Kits (Reel-Mounted Relay/Circuit Breaker Modules)

RCB kits are compact, weather-resistant kits that consist of a manual reset circuit breaker and a solid state relay (which replaces the solenoid). These kits can be factory installed when ordering reels, leading to significant labor savings and eliminating the need to fabricate and mount a bracket.

RCB kits are designed to work with all rescue reel models (Series 1500, 1600, and 2000). If you already have a reel and would like to install an RCB kit yourself, call Hannay Reels or your local dealer for stand-alone pricing and part numbers.



Speed Control Accessories

Model MD-70

This is a variable speed control, allowing the user full control over the motor speed. Works on both 12v and 24v motors.

Order using Hannay Part No. 9917.0080.



Speed Control Accessories

Model MD-12HDSR

Reversing rewind switch with rocker button, variable speed control, and internal circuit protection. Good for use on all Hannay 12V DC motors. Order using Hannay Part No. 9917.0075.



NOTE: Several other speed controls, switches, and reversing switches are available (for 12v, 24v, and 115v). Consult factory for assistance.

Hannay Reels **Sales Policies**

Hannay Reels 3-Year Limited Warranty

Products manufactured by Hannay Reels, Inc. ("Hannay") are warranted for 3 years from date of shipment when properly installed, maintained, and operated in accordance with Hannay instructions. In no event will Hannay have a warranty obligation for normal wear and tear, or for products that have, at Hannay's determination, been subjected to accident, abuse, misapplication, improper installation or improper maintenance. Common examples of normal wear and tear would include paint finish, swivel joint seal wear, and switch or motor brush wear.

Hannay makes no warranties, express or implied, other than those included in this warranty statement, and we disclaim any implied warrant of merchantability or fitness for any particular purpose. Hannay will not be liable for any consequential, incidental, or indirect damages from any cause whatsoever.

Failure to use a flexible inlet connection on any live hose reel will void the swivel joint warranty. Failure to use a properly sized circuit breaker with any electric rewind motor will void the electric motor warranty. Failure to use a filter and lubricator on any air rewind motor will void the air motor warranty. Failure to follow all procedures outlined in the Safety Guidelines document will void the warranty.

Components not manufactured by Hannay will be subject to the original manufacturers' warranties. Examples of such components include: hose and cable, motors, speed controls, and switches, swivel joints and seals, slip ring and brush assemblies.

Equipment which proves to be defective upon our inspection will be replaced free of charge, including freight to the customer. Our responsibility ceases upon delivery to any common carrier and we do not, unless previously instructed, insure shipments beyond point of delivery to such carrier. **No material will be accepted for return without a return goods authorization (RGA).** This warranty extends to the replacement or repair of the reel or part (no labor).

Hannay reserves the right to modify or alter materials, dimensions, design, and construction when necessary to improve the performance of the reel and/or accessories, or to meet delivery requirements.

Notice on Reel Finish

Standard finish on Hannay reels is a high performance enamel paint. Standard color is metallic graphite. Other colors available, please consult factory.

Most of the major components on standard reels are e-coated prior to receiving final topcoat paint finish. This combination of e-coat and enamel topcoat will meet the finish requirements of most customer applications and environments.

In cases where requirements cannot be met with the standard finish, Hannay Reels can coat any model reel with an automotive primer, allowing application of final coating at your facility.

Alternatively, Hannay Reels can provide a quote for matching a customer-provided paint specification. For further information, please contact your Hannay Reels sales engineer and a special paint request form will be sent to you.

For environments where no paint finish is suitable, we offer both aluminum and stainless steel (304 grade) construction on most reel models.

Return Goods Policy

All Hannay reels are built to order. These orders are typically placed into production within 1 business day of receipt. Once production begins, it may not be possible to cancel the order.

To prevent returns because the wrong reels or parts were ordered, please use the Hannay Reels Spec Worksheet (either online or from our Ordering & Accessory Guide) when specifying reels. Be sure to include any size, weight, pressure and/or material compatibility limitations for the application.

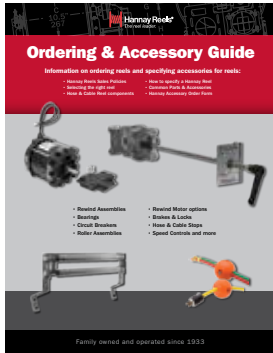
In the event that an item does need to be returned for credit, repair or replacement, prior approval must be obtained from Hannay Reels. Upon your request, we will send a Return Goods

Authorization (RGA) form. A signed copy of this form must accompany the material when returned to us, with the RGA number clearly showing on the outside of the box—a label is provided to you that you can print and attach. No product will be accepted for return or credit without an authorized RGA number.

All material must be returned prepaid, unless otherwise noted on our RGA. No return will be accepted that has been damaged due to improper return packaging, tampered with or altered from its original condition. Our restocking and handling fee is a minimum of 25% for standard catalog reels and parts. Custom reels specially built to customer specifications cannot be returned for any reason.

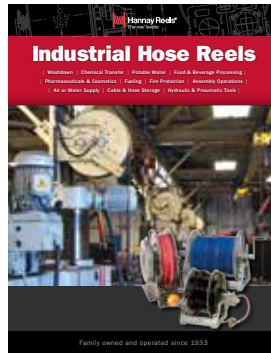
Find reels for every need.

Learn more about all of our reels, including specs, drawings, and even how to select the right reels and accessories for your industry.



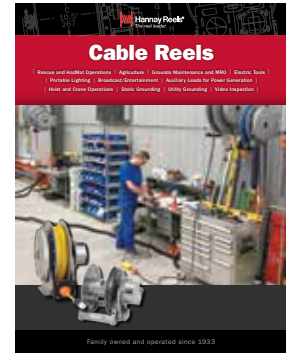
Ordering & Accessory Guide

- Selecting the right reel
- Reel components
- Available accessories
- How to spec and order reels and accessories
- Ordering options
- Hannay Reels policies



Industrial Hose Reels

- High pressure/low pressure reels
- Air/Lube/Grease reels
- Fueling
- Washdown/Power Wash
- Industrial Fire Protection
- Hydraulic/Pneumatic applications
- Hose Storage



Cable Reels

- Electric Tools
- Crane operations
- Portable Lighting
- Live and storage reels
- Video/Broadcast
- Static and Utility grounding reels

View all our reel catalogs online at **hannay.com**



Family owned and operated since 1933, Hannay Reels is the world leader in both OEM and aftermarket applications. Hannay offers thousands of standard hose reel and cable reel models, as well as unmatched custom capabilities. We can easily and affordably customize a reel to meet your exact specifications – built to last, delivered fast. Additional catalogs are available through your local Hannay Reels dealer or online at **hannay.com**.



553 State Route 143 | Westerlo, New York 12193
Email: reels@hannay.com | hannay.com



All Hannay reels are constructed of quality heavy gauge steel (optional aluminum or stainless steel also available on most models).

