

FAMILY OWNED AND OPERATED SINCE 1933



EF2200 Hose Reel For CORE™ Rescue Tools



The
Hannay
Way

Coaxial Hose with Single Fitting Connection • Safer to Assemble
Simpler to Setup • Faster to Deploy • Lighter Weight

www.hannay.com

Pride in workmanship • Reels built to order • Consistent quality • Service with integrity • Value for your dollar

EF2200 Hose Reel For CORE™ Rescue Tools

To handle hydraulic Holmatro CORE Technology™ coaxial twin hose.

- Chain and sprocket drive powered by an electric motor.
- Adjustable spring drag brake standard on all models.
- CORE Technology swivel joint inlet and fluid path.
- Optional factory-installed 4-way roller guide available.
- Pressures to 10,500 psi (724 bar).
- Temperatures from -30°F to +225°F (-29°C to +107°C).
- Divider disc separates hose from adapter block outlet.
- Standard finish is oven-cured enamel. Polished stainless steel. (304 grade) discs, sprocket, with chrome frame available.



Left-hand configuration shown



Shown with optional roller assembly

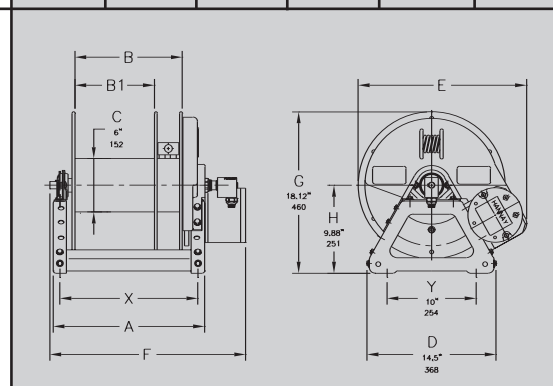
Model Number	Hose Capacity of Reel		Approx. Weight		Reel Dimensions***					
	feet m.		lb. kg.		inches mm.					
	note 1 inch = 25.4mm		NET	SHIP	A	B	BI	E Power	F Power	X
	Core Technology Coaxial Hose									
	O.D. (in)	7/8"								
	O.D. (mm)	22								
EF 2220-17-18	1/100	1/31	89	124	17	12	9	19	21.62	15.5
			40	56	432	305	229	483	550	394

Notes:

Specifications subject to change.

1. Electric rewind models available in either 12v or 24v DC. Reels supplied with switch and solenoid.
2. Add 2 1/2" to 'E' dimension and 1/2" to 'G' dimension with Assembly "C2" Roller installed in top wind position.

3. Be sure to check all dimensions and weights prior to ordering. Must specify right or left-hand configuration.
4. Above reels cannot be shipped via UPS or FedEx Ground.



*** X and Y dimensions indicate mounting holes.



553 State Route 143 • Westerlo, New York 12193-0159 • E-mail: reels@hannay.com
Toll Free Phone: 1-877-467-3357 • Toll Free Fax: 1-800-REELING • Intl. Phone: 1-518-797-3791 • Intl. Fax: 1-518-797-3259

www.hannay.com

H-0604-CORE