

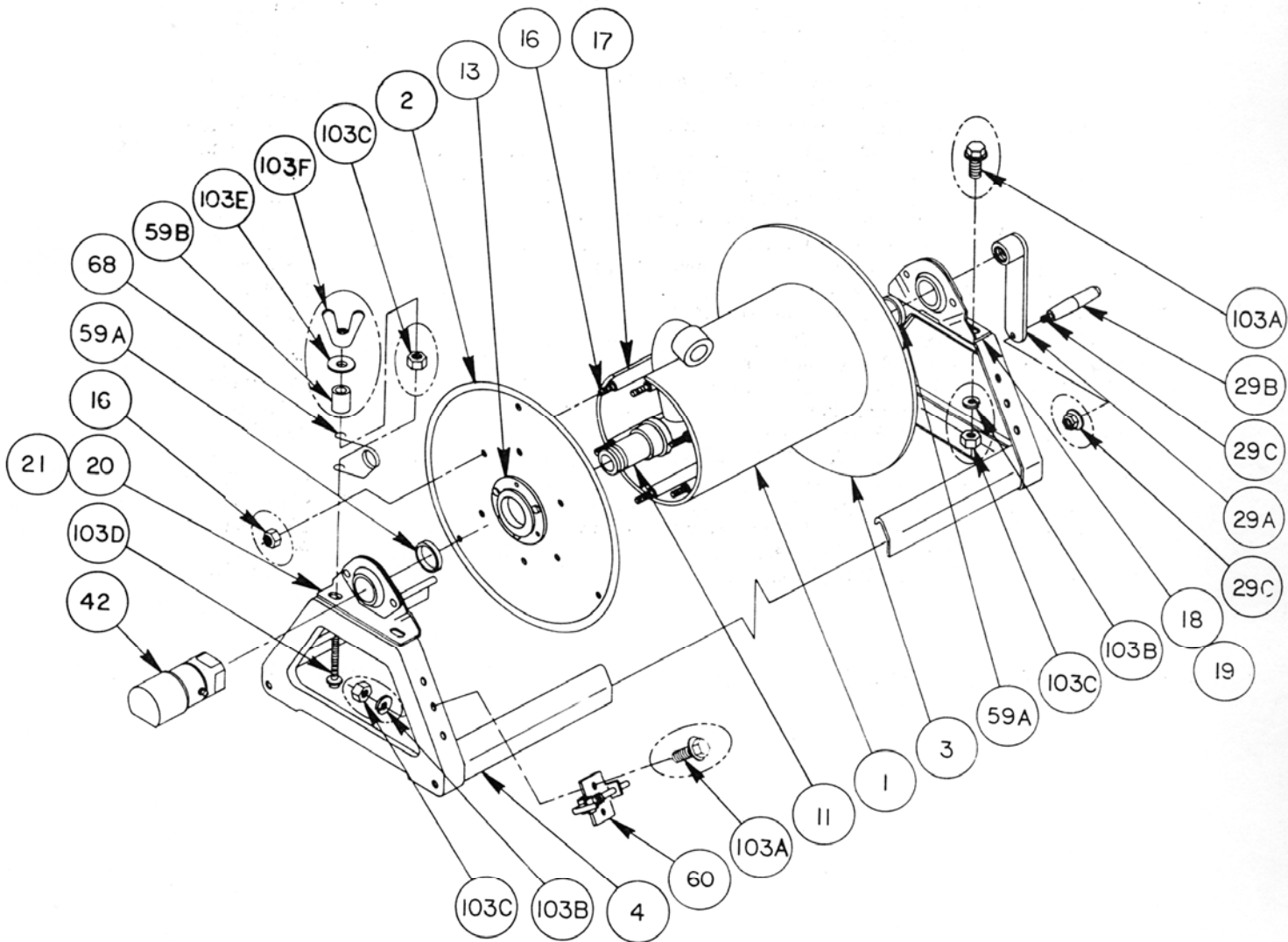


# Hannay Reels®

*The reel leader.*

Clifford B. Hannay & Son, Inc., 600 East Main Street  
P.O. Box 159, Westerlo, New York 12193-0159  
Telephone 518-797-3791  
FAX 1-800-REELING (733-5464)

## ISO 178 PARTS LIST SERIES SS4000



NOTE:  
ITEMS CIRCLED ARE ENLARGED FOR CLARITY

**PARTS LIST**  
**ISO 178**  
**SERIES SS4000**

When ordering parts

**BE SURE TO SPECIFY COMPLETE MODEL NUMBER and SERIAL NUMBER OF REEL.**

**USE PART NUMBER!**

<u>Drawing No.</u>	<u>Description</u>	<u>PART NUMBER</u>	<u>Quantity</u>
ISO-178-1	SST Drum, 8" Dia. (Specify Model) .....	9905.1124	1
ISO-178-2	SST Disc, 17" Dia. (Front) .....	9903.0714	1
ISO-178-3	SST Disc, 17" Dia. (Back) .....	9903.0714	1
ISO-178-4	SST Frame Assembly .....	(Specify Model)	1
ISO-178-11	1" SST Hub Assy., 1" FIPT Outlet Riser .....	9901.1604	1
ISO-178-13	SST Disc Washer .....	9960.0070	2
ISO-178-16	3/8"-16 SST Carriage Bolt w/Nut .....	(Specify Model)	6
ISO-178-17	3/8" Pipe Spacer .....	(Specify Model)	6
ISO-178-18	1" Self Aligning Bearing Complete (Back) .....	9902.1400	1
ISO-178-19	1" Bearing Insert (Back) .....	9902.1500	1
ISO-178-20	1" Self Aligning Bearing Complete (Front) .....	9902.1400	1
ISO-178-21	1" Bearing Insert (Front) .....	9902.1500	1
ISO-178-29A	SST Hand Crank (permanently attached) .....	9914.0044	1
ISO-178-29B	Hand Crank Handle .....	9914.0505	1
ISO-178-29C	Hand Crank Handle Bolt w/Nut .....	9914.0511	1
ISO-178-42	1" 90 Deg. FxF SST Superswivel Joint .....	9929.8554	1
ISO-178-59A	1" Hub Spacer Washer .....	9960.0061	2
ISO-178-59B	SST Tension Brake Spacer .....	9960.0050	1
ISO-178-60	Pinlock, (Standard) .....	9965.0030	1
ISO-178-68	Tension Brake Spring .....	9965.0002	1
ISO-178-103A	3/8"-16 x 3/4" SST Wide Flanged Bolt .....	9960.0009	5
ISO-178-103B	3/8" SST Lock Washer .....	9960.0008	5
ISO-178-103C	3/8"-16 SST Hex Nut .....	9960.0007	6
ISO-178-103D	3/8"-16 x 3" SST Round Head Cap Screw .....	9960.0011	1
ISO-178-103E	3/8" SST Flat Washer .....	9960.0010	1
ISO-178-103F	3/8"-16 SST Wing Nut .....	9960.0006	1